

# AHL Series

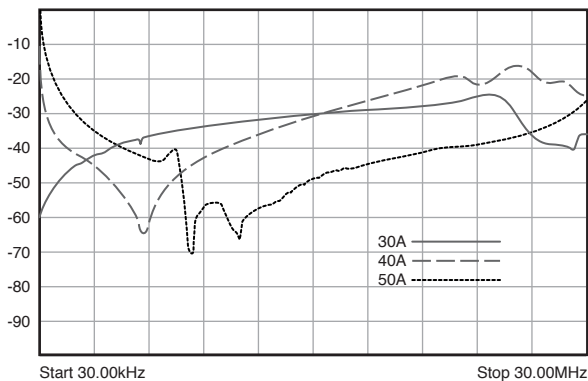
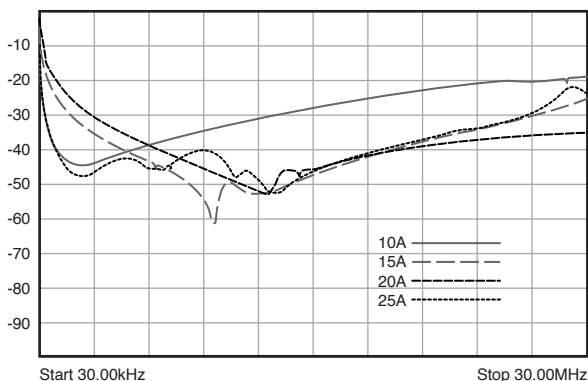
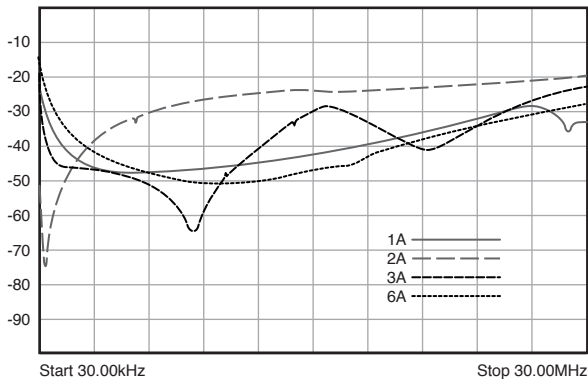
## Low-frequency Single-phase Dual-stage EMI Filters

These series range of double stage filters give superior performance when used in applications with low Impedance loads controlling pulsed, continuous and intermittent interference noise and where high levels of mains borne interference are present.

Filter with additional differential mode rejection in low frequency. For use with switched mode power supplies to reduce noise from power supply back into the mains. Filter also provides good attenuation of incoming interference



### INSERTION LOSS



### FEATURES

- Double stage filter
- Medical Version available
- Superior Performance
- Chassis mounting

### APPLICATIONS

- Power Systems
- Electronic Equipment
- Frequency convertors
- Stepper motor drives
- UPS/Inverters

### SERIES SPECIFICATIONS

Part No.	Rated current @40°C	Leakage current (mA) @250VAC/50Hz	Termination		Weight (kg)
			Tab	Screw	
AHL-01	1A	0.34	6.3 x 0.8		0.125
AHL-02	2A	0.34	6.3 x 0.8		0.125
AHL-03	3A	0.34	6.3 x 0.8		0.17
AHL-06	6A*	0.34	6.3 x 0.8		0.17
AHL-10	10A	0.34	6.3 x 0.8		0.17
AHL-15	15A	0.34	6.3 x 0.8		0.26
AHL-20	20A	0.73		M5	0.65
AHL-25	25A	0.73		M5	0.65
AHL-30	30A	0.73		M5	0.65
AHL-35	35A*	0.73		M5	1
AHL-40	40A	0.73		M5	1
AHL-50	50A	0.73		M6	2

\*Not covered under NEMKO

### CHARACTERISTICS

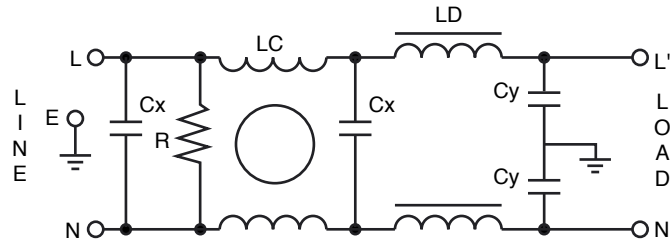
<b>Max. Cont. Oper. Voltage</b>	250VAC
<b>Operating Frequency</b>	50/60Hz
<b>Current ratings</b>	1A to 50A @40°C
<b>High Potential test voltage</b>	L to G 2120Vdc for 1 Minute; L to L 1414Vdc for 1 Minute
<b>Design</b>	corresponding to UL 60939-3, CSA 22.2 No.8-13 and IEC 60939
<b>Overload Capability</b>	135% of Rated current for 15 minutes
<b>Flammability</b>	corresponding to UL 94 V-0
<b>Temperature range</b>	-25°C to +85°C
<b>Climatic Category</b>	25/85/21
<b>Recommended Torque (Nm)</b>	M5: 1.0-2.0; M6: 1.25 - 2.5; M8: 2.5-5; M10: 3.5-7

(continued)

# AHL Series

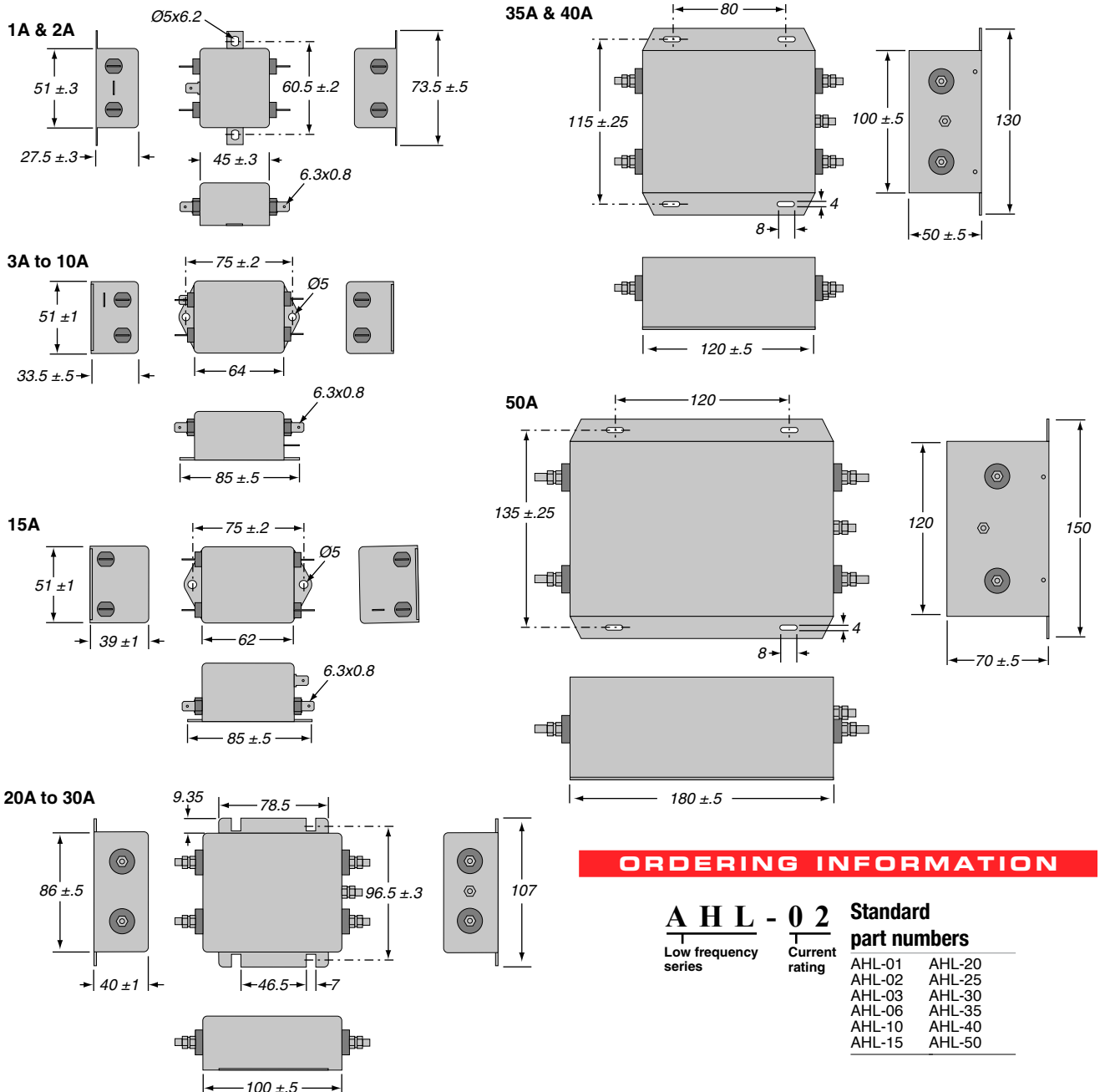
## Low-frequency Single-phase Dual-stage EMI Filters

### CIRCUIT DIAGRAM



### DIMENSIONS

All dimensions in mm; Tolerances according to ISO2768-m



### ORDERING INFORMATION

**AHL - 02**  
Low frequency series      Current rating

**Standard part numbers**

AHL-01	AHL-20
AHL-02	AHL-25
AHL-03	AHL-30
AHL-06	AHL-35
AHL-10	AHL-40
AHL-15	AHL-50