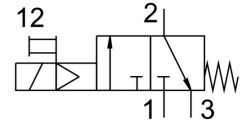


Shut off valve MS4-EE-1/4-10V24

Part number: 542578

FESTO



Data sheet

Feature	Value
Type code	MS4-EE
Design	Piston gate valve
Actuation type	Electrical
Exhaust air function	Without flow control option
Manual override	Non-detenting
Reset method	Mechanical spring
Type of control	Pilot-controlled
Symbol	00991008
Valve function	3/2, closed, monostable
Operating pressure	4 bar ... 10 bar
C value	9.5 l/sbar
b-value	0.44
Standard nominal flow rate	2000 l/min
Duty cycle	100%
Coil characteristics	24 V DC: 1.8 W
Operating medium	Compressed air as per ISO 8573-1:2010 [7:4:4] Inert gas
Information on operating and pilot media	Operation with oil lubrication possible (required for further use)
Corrosion resistance class (CRC)	2 - Moderate corrosion stress
Note on materials	RoHS-compliant
Temperature of medium	-10 °C ... 50 °C
Degree of protection	IP65
Ambient temperature	-10 °C ... 50 °C
Type of mounting	Line installation Optionally: With accessories
Mounting position	Any
Flow direction	Non-reversible
Product weight	273 g
Pneumatic connection 1	G1/4
Pneumatic connection 2	G1/4
Pneumatic connection 3	G1/4
Pilot air supply port	Internal
Electrical connection	as per DIN EN 175301-803 Plug Rectangular design Form C

Feature	Value
Seals material	NBR
Housing material	Die-cast aluminum
For use in the food industry	See supplementary material information