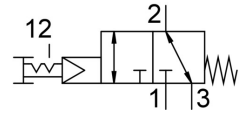


Pushbutton valve VHEF-PTC-B32-G18

Part number: 5299707

FESTO



Data sheet

Feature	Value
Valve function	3/2, bistable
Lap	Zero overlap
Cover material	PA-reinforced
Actuation type	Manual
Width	20 mm
Standard nominal flow rate	750 l/min
Pneumatic working port	G1/8
Operating pressure	3.5 bar ... 10 bar
Design	Plate seat
Nominal width	5.6 mm
Type code	VHEF
Exhaust air function	With flow control option
Application note	Operate by hand only
Sealing principle	Soft
Mounting position	Any
Manual override	Detenting
Type of control	Pilot-controlled
Pilot air supply port	External
Flow direction	Reversible
Symbol	00995885
Pilot pressure	3.5 bar ... 10 bar
Max. switching frequency	0.5 Hz
Explosion prevention and protection	Zone 21 (ATEX) Zone 1 (ATEX) Zone 2 (ATEX) Zone 22 (ATEX)
Operating medium	Compressed air as per ISO 8573-1:2010 [7:-:-]
Information on operating and pilot media	Operation with oil lubrication possible (required for further use)
Corrosion resistance class (CRC)	1 - Low corrosion stress
Temperature of medium	-10 °C ... 60 °C
Ambient temperature	-10 °C ... 60 °C
Actuating force	20 N
Release force	25 N
Product weight	168 g
Type of mounting	Front panel mounting Optionally: With through-hole

Feature	Value
Pneumatic connection 1	G1/8
Pneumatic connection 2	G1/8
Pneumatic connection 3	G1/8
Note on materials	RoHS-compliant
Seals material	NBR
Housing material	Wrought aluminum alloy, anodized