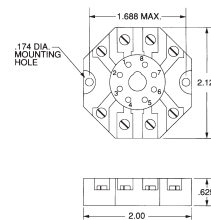
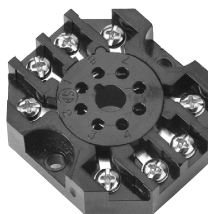


RELAY SOCKETS

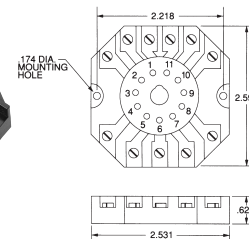
SURFACE MOUNTED— RB-08

Recommended for use with all 8 pin octal plug-in devices. UL Recognized and CSA Certified for 10 Amps @ 600 VAC. The molded thermoplastic base has brass, nickel plated inserts with #6-32 steel, nickel plated screws.



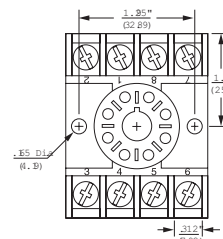
SURFACE MOUNTED— RB-11

Recommended for use with all 11-pin magnal plug-in devices. UL Recognized and CSA certified for 10 Amp @ 300 VAC. The molded thermoplastic base has brass, nickel plated inserts with #6-32 steel, nickel plated screws.



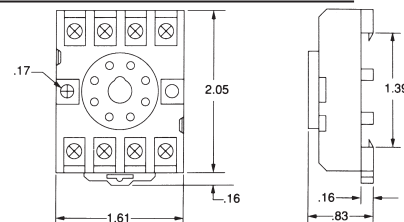
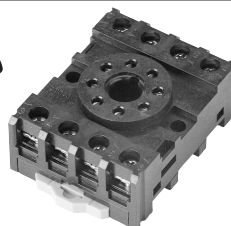
DIN RAIL/SURFACE MOUNTED—OT-08

DIN Rail mount. Recommended for use with all 8 pin octal plug-in devices. UL Recognized and CSA Certified for 10 Amps @ 600 VAC. The molded thermoplastic base has brass, nickel plated inserts with #6-32 nickel plated screws.



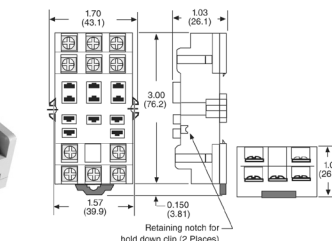
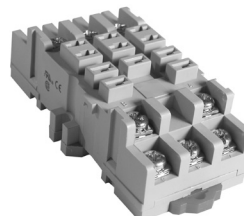
DIN RAIL/SURFACE MOUNTED—PF083A

Recommended for use with all 8 pin octal plug-in devices. UL Recognized and CSA Certified for 10 Amps @ 300 VAC. The molded polycarbonate base has brass, nickel plated inserts with #6-40 steel, nickel plated screws and captive self-lifting terminal clamps.



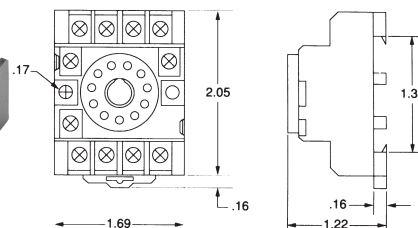
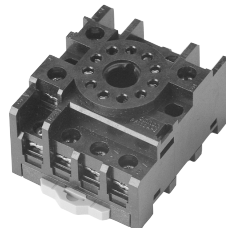
SURFACE MOUNTED— 70-463-1

Recommended for use with all 0.187 blade 11 Pin Square base plug-in devices. UL Recognized and CSA Certified for 10 Amps @ 300 VAC. The molded thermoplastic base has brass, nickel plated inserts with #6-32 steel, nickel plated screws.



DIN RAIL/SURFACE MOUNTED—PF113A

Recommended for use with all 11 pin magnal plug-in devices. UL Recognized and CSA certified for 10 Amps @ 300 VAC. The molded polycarbonate base has brass, nickel plated inserts with #6-40 steel, nickel plated screws and captive self lifting terminal clamps.



DIN RAIL/SURFACE MOUNTED—PYF14A

Recommended for use with all 14 pin multi-contact square base devices. UL Recognized and CSA Certified for 5 Amps @ 300 VAC. The molded polycarbonate base has brass, nickel plated inserts with #4-40 steel, nickel plated screws and captive self-lifting terminal clamps.

