



Quality is in the BEX!

- HOME
- New! 2008 Catalog
- Secondary Operations Product Customization
- Custom Enclosure Design
- Custom Protective Boots
- FULL! Product Assembly
- Technical Data Sheets
- about us
- World Wide Distributor



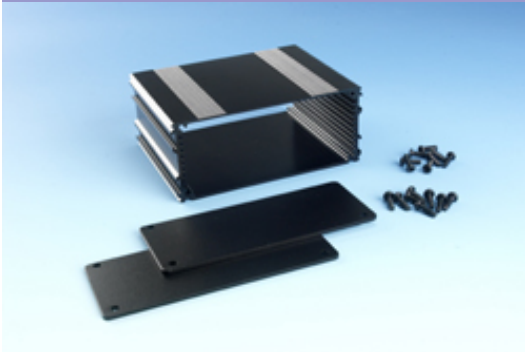
Phone: 847-932-4700
Fax: 847-932-4701



28915 N. Herky Drive, BLD# 107
Lake Bluff, IL 60044 USA
email: sales@boxenclosures.com

BEX Series 5

Detailed Product Sheet



Extruded aluminum case kit with 2 end panels and assembly screws - black HARD COAT anodized, 1.37 H x 5.25 W x 3.15 L" / deep

Part Number:	B5-080BK
Product name:	BEX Series 5
Color:	Black
Size:	1.37Hx5.25Wx3.15L"
Weight in pounds:	0.3
Material:	Aluminum 6063 T6 (HE9)

Technical Drawings:    

Quantity	Price
1 - 99	\$11.58
Price Brackets: 100 - 249	call for price
250 - 499	call for price
500 - 999	call for price
1000 - ∞	call for price



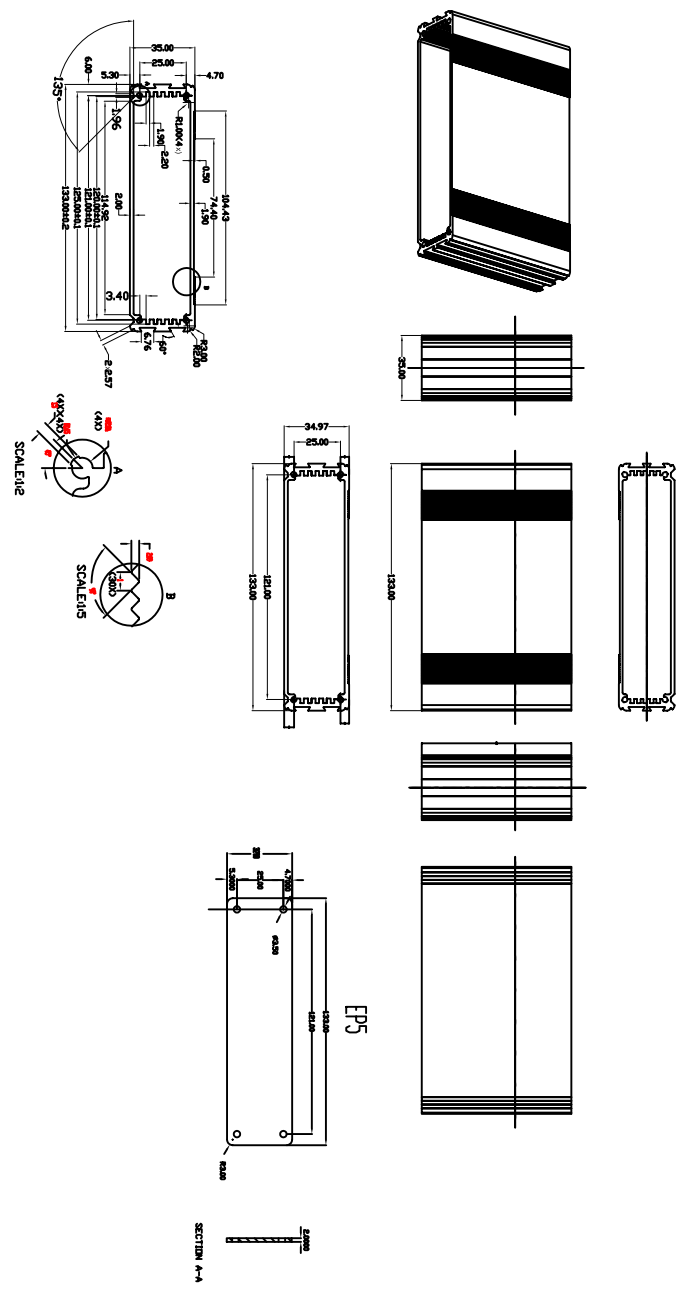
Optional Mounting Lugs Above
Dealers List


[Visit dealer's webpage](#)

#278-0639



Box Enclosures & Assembly Services
28915 N. Herky Drive, BLD# 107, Lake Bluff, IL 60044 Phone 847-932-4700 Fax 847-932-4701
www.boxenclosures.com



 <p>ENCLOSURES & ASSEMBLY SERVICES</p>		Revisions: Model: Part No.:	
Title: B-Frame - Steel Top/Bottom 600 x 600 mm		Dwg. No.: Part No.:	
Material:		Color:	
Finish:		Drm. Date:	
Proj.:		Chk. Date:	
TOLERANCE all dimension in mm unless otherwise specified: .x ±0.20 .xx ±0.10 .xxx ±0.05 ANGLE ±0.5°		Sheet 1 of 1 App. Date:	

THIS DRAWING IS THE PROPERTY OF AND MAY CONTAIN PROPRIETARY INFORMATION OWNED BY Box Enclosures. IT IS PROVIDED UNDER A CONFIDENTIAL RELATIONSHIP FOR A SPECIFIC PURPOSE. THE RECIPIENT AGREES TO USE IT ONLY FOR SUCH PURPOSE AND RETURN IT TO Box Enclosure UPON REQUEST.