

mec

www.apem.com

EASY TO BUILD IN AND AESTHETIC CAP SERIES WITH ENDLESS COMBINATIONS TO CUSTOMIZE YOUR MODERN APPLICATION.

10S/10T/10U/10V series

- Round/ square / triangle
- Convex top surface
- Total height 7.5 mm
- Floating caps
- Mounted on Ultramec 6C

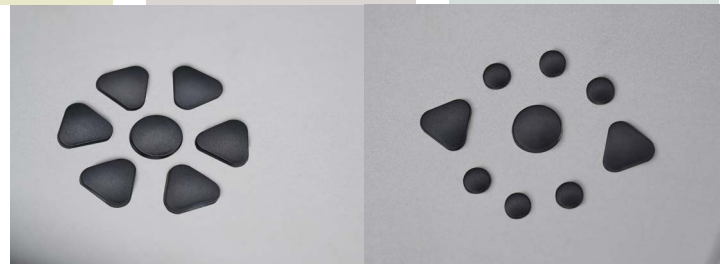
PANEL SWITCHES

PCB SWITCHES

LED INDICATORS

JOYSTICKS

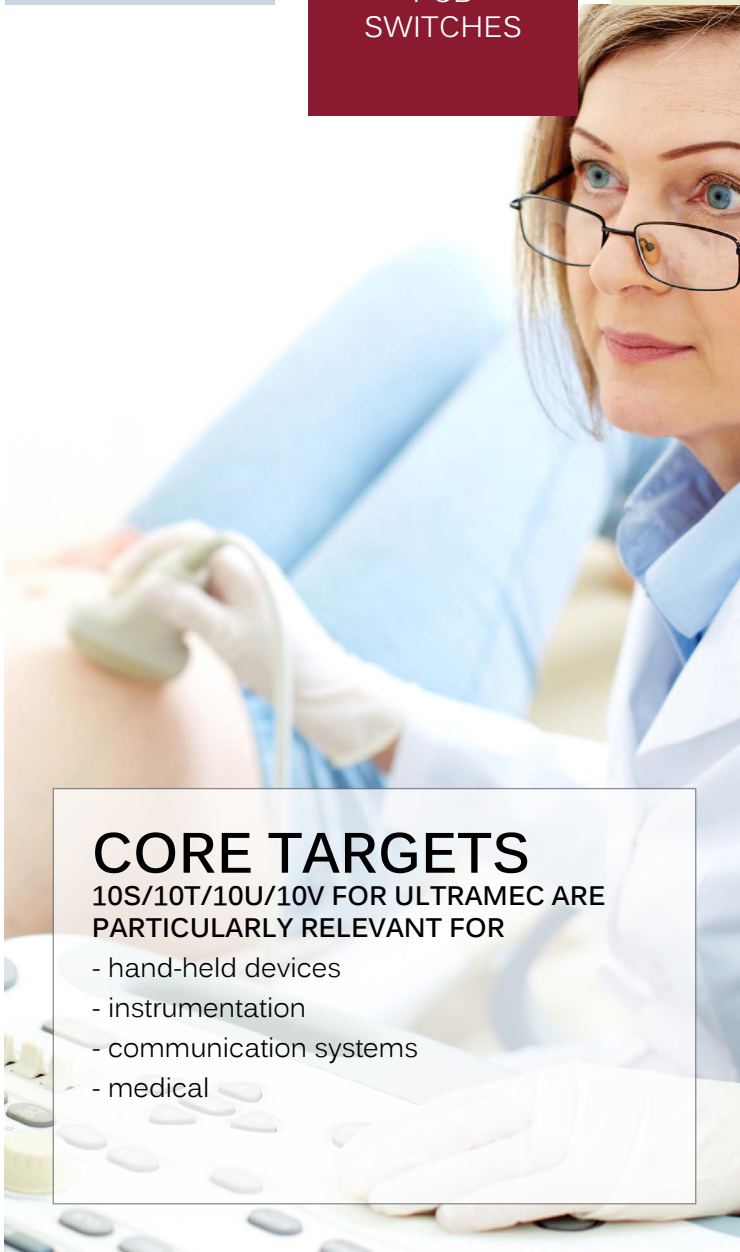
SWITCH PANELS



CORE TARGETS

10S/10T/10U/10V FOR ULTRAMEC ARE PARTICULARLY RELEVANT FOR

- hand-held devices
- instrumentation
- communication systems
- medical



CUSTOMER BENEFITS

- Design flexibilities + endless combinations to customize your panel
- Aesthetic design for your modern application
- Compact
- Easy placement with floating caps
- Designed for optimal functionality with Ultramec™ switches

END-USER EXPERIENCE

- Distinct sound and contact feedback
- Fine tactile feel
- Pleasing to the eye
- Intuitive design

CUSTOMIZATION POSSIBILITIES

THE 10S/10T/10U/10V CAPS FOR ULTRAMEC SWITCHES HAVE THE FOLLOWING OPTIONS FOR PERSONALIZATION:

- Cap color
- Legends: pad printing and laser marking
- Illumination with LEDs on the PCB for 10T/10U/10V

TECHNICAL FEATURES

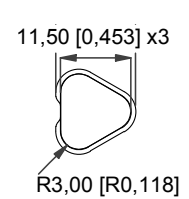
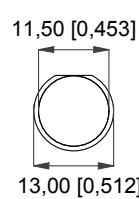
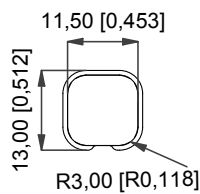
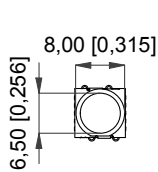
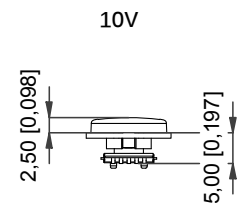
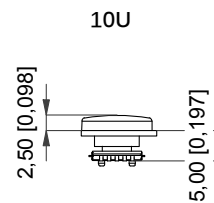
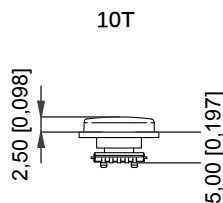
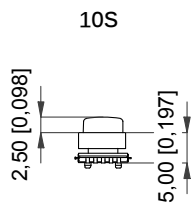


6C + 10S/10T/10U/10V
 10S: Ø6.5 mm
 10T: 11.5 x 11.5 mm
 10U: Ø11.5 mm
 10V: 11.5 mm x3
 Total height 7.5 mm
 Matte surface finish

CLICK BELOW FOR FURTHER INFO:

3D files: 10S, 10T, 10U and 10V

[datasheet](#)



SERIES	MOUNTING	POLES	FUNCTION	POSITIONING PINS	PACKAGING	CAP	COLOR
6C	J J-bend	1 single pole	NO normally open	P optional	R tape & reel	10S Ø6.5 10T 11.5 x 11.5 10U Ø11.5 10V 11.5 x3	00 blue 03 grey 08 red 09 black 36 signal white