

Small Lithium ion Rechargeable battery

CT04120

Small lithium-ion rechargeable battery with high rate charge / discharge, long cycle life and high safety



Advantages

① Quick charge characteristics

High-rate charging (10C) is possible, and charging control IC is unnecessary.

② Excellent discharge characteristics

Continuous discharge with a maximum discharge rate of 10C is possible. In addition, since the internal resistance is low and the voltage drop is small, stable discharge is possible even under a large peak load or low temperature.

③ Long cycle life

Charge (capacity) recovery rate keeps over 80% even after 5000 cycles.

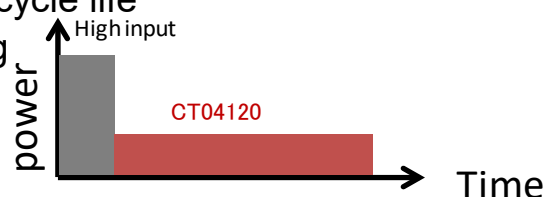
④ High safety

No thermal runaway occurs because of using chemically stable lithium titan.

Benefits & Applications

1. Small power equipment

- Quick charge with High rate (10C,30mA) is available
- Constant voltage charge is available
- Able to use many times due to long cycle life
- High safety and small weight saving

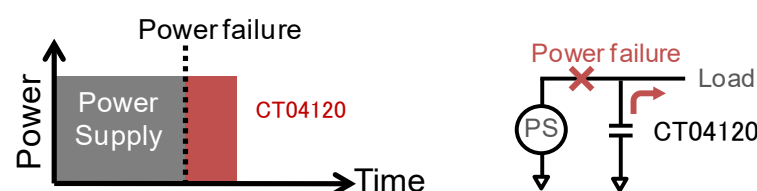


Application Example:

- ✓ Electric pens
- ✓ Wearable equipment

2. Backup

- System backup even when the main battery is replaced or the battery is disconnected
- High power discharge is available
- Constant voltage charge is available
- Charge control IC is unnecessary.

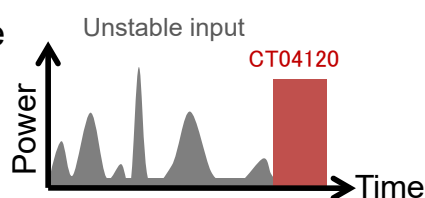
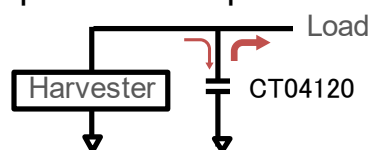


Application Example:

- ✓ Handy terminal / barcode reader
- ✓ POS (payment terminals, etc.)
- ✓ Other battery powered equipment

3. Energy Harvesting Systems

- Chargeable/dischargeable in wide rate ranges
- Long operating time due to low leakage current
- High power output is available
- Resistant to over discharge
- Operation temperature is wide



Application Example:

- ✓ Solar battery charger equipment
- ✓ Sensor node with wireless sensor network in combination with micro and macro energy harvesting systems

Specifications

Product name	CT04120	Dimensions	
Nominal Voltage	2.3V	ΦD	4mm
Charge Voltage	2.7V	L	12mm
End of Discharge Voltage	1.8V	Φd	0.45mm
Discharge capacity	3mAh	F	1.5mm
ESR@1kHz	1000mΩ	Operating temp	-20~70°C

