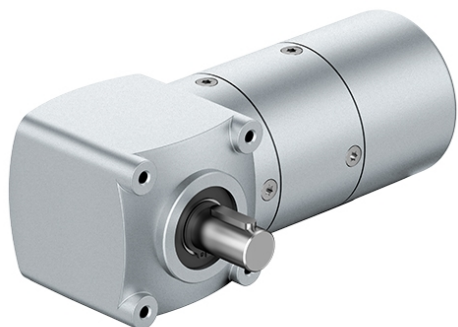


# brushless EC motor, external rotor (integr. electr.) with angle gearhead EtaCrownPlus 63

VDC-3-49.15-B00-K4 - EtaCrownPlus 63



## Characteristics of the drive solution

Typ	Unit	Value
Order number	-	VG.VDC4915BK4.ECP63.3.85
Output power	W	73.0
Output torque	Nm	15.0
Output speed	rpm	47.2

## Motor

Typ	Unit	Value
Type of motor	-	brushless EC motor, external rotor (integr. electr.)
Motor designation	-	VDC-3-49.15-B00-K4
Voltage	V	24
Output speed	rpm	4000
Nominal power	W	100.0
Rated current	A	5.2
Torque	Ncm	23.9
weight of Motor	kg	0.59

## Gearbox

Typ	Unit	Value
Type of gear	-	angle gearhead
name of gearbox	-	EtaCrownPlus 63

No of reduction stages	-	3
Untersetzung	-	84.8
Max. nominal torque	Nm	40.0
Efficiency	-	73%
Output shaft bearing	-	combined sliding / ball bearing
Lubrication	-	maint. free-grease lubricated for life
Gearhead play	-	about 0.7° to 1.2°