

Double Chokes

SMD

Rated voltage 42 Vac/80 Vdc
Rated current 100 to 600 mA
Rated inductance 4,7 to 50 mH



Construction

- Current-compensated ring core choke with ferrite core
- Bifilar winding

Features

- Case flame-retardant as per UL 94 V-0
- Suitable for reflow soldering

Anwendungen

- Suppression of asymmetrical interference coupled in on lines, whereas data signals up to some MHz can pass unaffectedly
- Telecom interfaces
- ISDN systems

Terminals

- Tinned

Marking

Manufacturer, ordering code,
date of manufacture (month, year)

Delivery mode

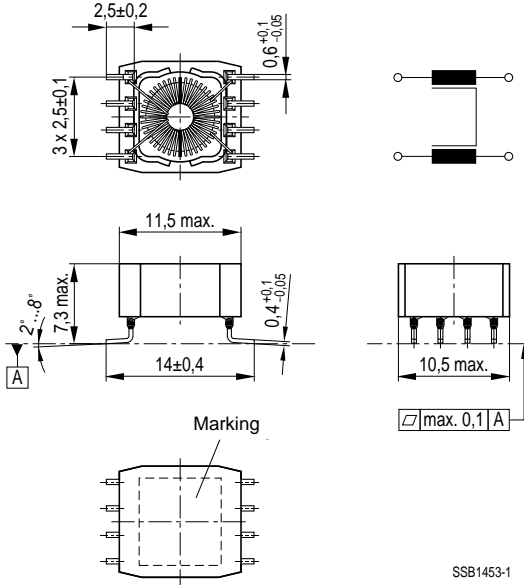
Blister tape, reel packing

For details on taping, packing and packing units [see page 302](#)

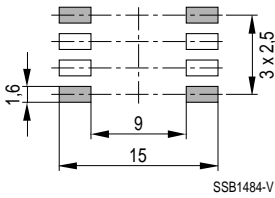
Double Chokes

SMD

Dimensional drawing



Layout recommendation




General technical data

| | |
|------------------------------------|--|
| Rated voltage V_R | 42 Vac (50/60 Hz) 80 Vdc |
| Rated current I_R | Referred to 50 Hz and 60 °C ambient temperature |
| Rated inductance L_R | Measured with HP 4275A at 10 kHz and 10 mV (specified per winding) |
| Inductance tolerance | - 30/+ 50 % |
| Inductance decrease $\Delta L/L_0$ | < 10 % at dc magnetic bias with I_R |
| Stray inductance L_S | Measured at 10 kHz and 10 mV |
| DC resistance R_{typ} | Typical values, measured at 20 °C ambient temperature |
| Solderability | (215 ± 3) °C, (3 ± 0,3) s wetting of soldering area ≥ 95 % in accordance with IEC 60068-2-58 |
| Climatic category | 40/125/56 (- 40 °C/+ 125 °C/56 days damp heat test) in accordance with IEC 60068-1 |
| Weight | Approx. 2 g |

Characteristics and ordering codes

| L_R mH | L_S, typ nH | I_R mA | R_{typ} Ω | V_T Vdc, 2 s | Ordering code |
|-------------|------------------|-------------|-----------------------|-------------------|-------------------|
| 4,7 | 500 | 600 | 0,4 | 1000 | B82792-C0475-N365 |
| 6,8 | 500 | 600 | 0,5 | 750 | B82792-C0685-N365 |
| 10 | 600 | 500 | 1,1 | 750 | B82792-C0106-N365 |
| 22 | 800 | 200 | 1,6 | 750 | B82792-C0226-N365 |
| 33 | 1500 | 100 | 2,0 | 750 | B82792-C0336-N365 |
| 50 | 1700 | 100 | 2,6 | 750 | B82792-C0506-N365 |

Double Chokes

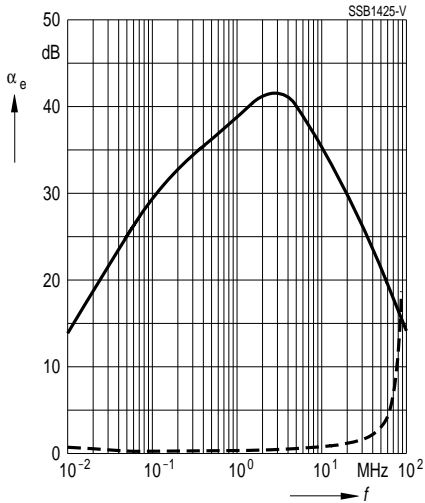


Insertion loss α_e (typical values at $Z = 50 \Omega$)

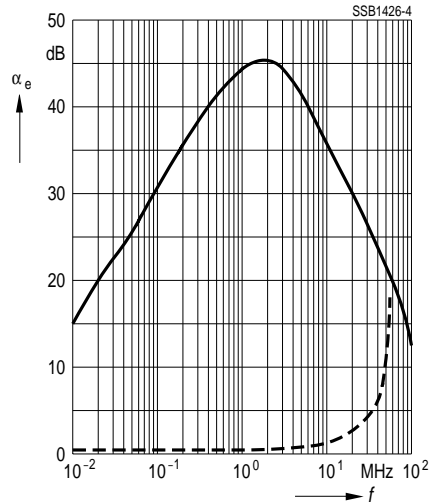
———— asymmetrical, all branches in parallel (common mode)

- - - - - symmetrical (differential mode)

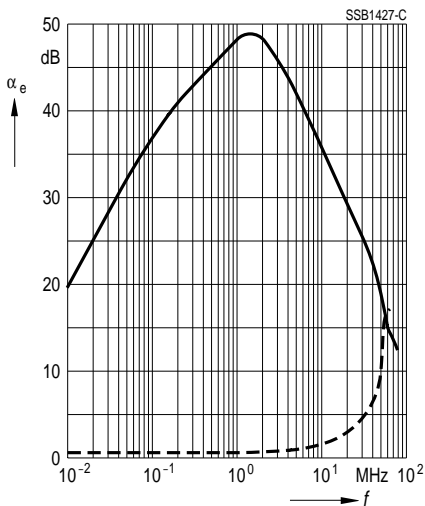
B82792-C0475-N365



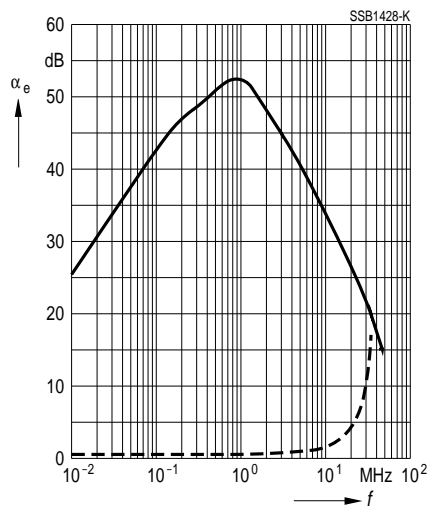
B82792-C0685-N365



B82792-C0106-N365



B82792-C0226-N365



Double Chokes

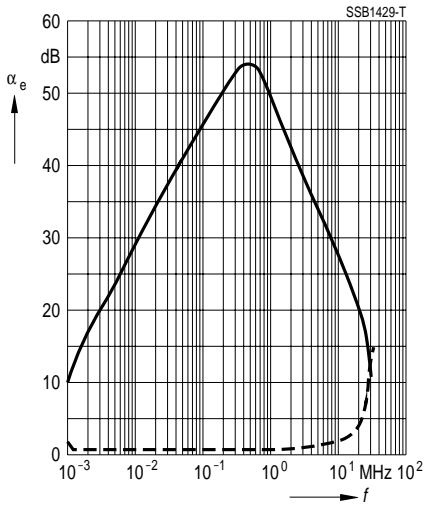


Insertion loss α_e (typical values at $Z = 50 \Omega$)

———— asymmetrical, all branches in parallel (common mode)

- - - - - symmetrical (differential mode)

B82792-C0336-N365



B82792-C0506-N365

