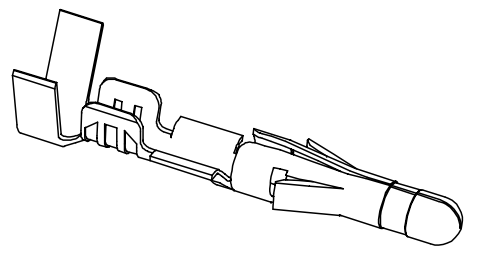
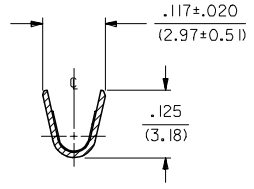
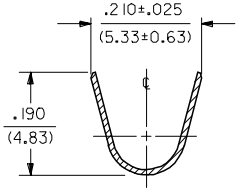
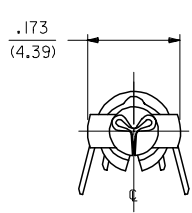
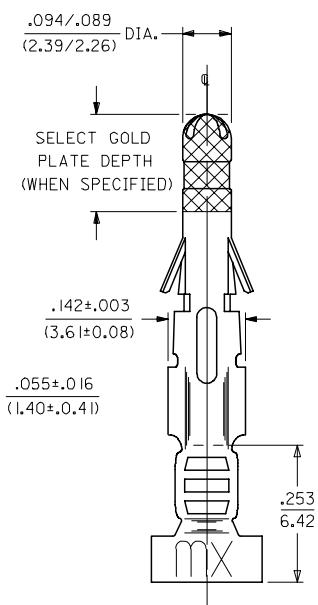
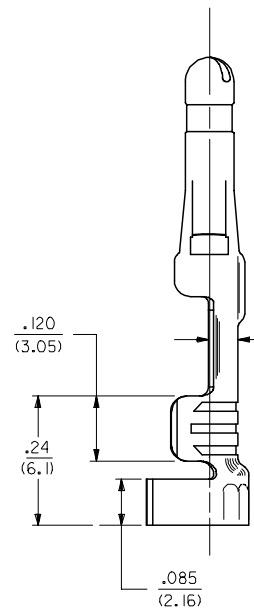
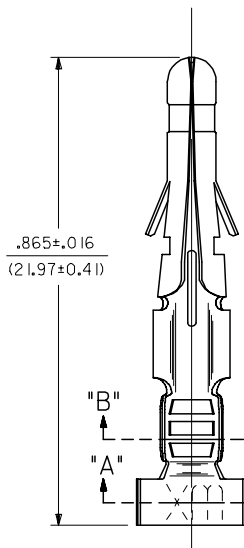


PART NO.	ENG. NO.
02-09-2103	1190-(P901)L
02-09-2101	1190-(P901)
02-09-6110	1190-(591)L
02-09-6101	1190-(591)
02-09-6106	1190-(550)L
02-09-6100	1190-(550)



SECT. "A-A"

SECT. "B-B"



NOTES:

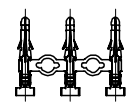
- MATERIAL:
CARTRIDGE BRASS
- FINISH CODES:
901 HOT TIN DIP .000020/(0.00051) MIN.
591 SELECT GOLD PLATE .000050/(0.00127) MIN. IN CONTACT AREA,
OVER .000050/(0.00127) MIN. NICKEL OVERALL
WITH .000010/(0.00025) MAX. GOLD FLASH OVERALL.
550 SELECT GOLD PLATE .000015/(0.00038) MIN. IN CONTACT AREA,
OVER .000030/(0.00076) MIN. NICKEL OVERALL
WITH .000010/(0.00025) MAX. GOLD FLASH OVERALL.
- PRODUCT SPECIFICATION: PS-43660-9999
- TERMINAL FOR USE WITH .093/(2.36) SERIES HOUSINGS AND WILL
ACCEPT 14 THRU 20 AWG WIRE.
- INSERTION FORCE: 3.5 LBS. MAX. WHEN TERMINAL IS INSERTED
INTO .093 SERIES HOUSING.
- RETENTION: 20 LBS. MIN. FROM HOUSING.

△ DIMENSION FROM THE END OF THE TERMINAL TO THE END OF THE BRUSH
ON THE WIRE CRIMPED INTO THE TERMINAL.

LEGEND

1190-(****)*

- FORM: BLANK=CHAIN, L=LOOSE
- FINISH CODE: P=PREPLATE, BLANK=POSTPLATE



CHAIN FORM
FULL SCALE

LEAD FREE UPDATE EC NO: UCP2005-2754 DRWN: JONE 2005/06/24 CHKD: ADERR 2005/06/24 APPR: FSM TH 2005/06/24 REV: BS	QUALITY SYMBOLS	GENERAL TOLERANCES (UNLESS SPECIFIED)	DIMENSION STYLE	SCALE	DESIGN UNITS	THIRD ANGLE PROJECTION	
	$\nabla=0$ $\nabla=0$	mm INCH 4 PLACES ± --- ± --- 3 PLACES ± --- ± .010 2 PLACES ± 0.25 ± .014 1 PLACE ± 0.13 ± --- ANGULAR ±1/2°	IN/MM	6:1	INCH		
	DRAWN BY: JONE CHECKED BY: ADERR APPROVED BY: RAS	DATE: 10/26/87 DATE: 10/26/87 DATE: 10/26/87	DRAWN BY: GEP CHECKED BY: RW APPROVED BY: RAS	DATE: 10/26/87 DATE: 10/26/87 DATE: 10/26/87	TITLE: CRIMP TERMINAL, MALE .093/(2.36) DIA. FOR 14 THRU 20 AWG. WIRE	MATERIAL NO. DOCUMENT NO.	SHEET NO. 1 OF 1
	DRAFT WHERE APPLICABLE MUST REMAIN WITHIN DIMENSIONS	SEE CHART	MOLEX MOLEX INCORPORATED	SD-1190-*			