



for a greener tomorrow



**MITSUBISHI
ELECTRIC**

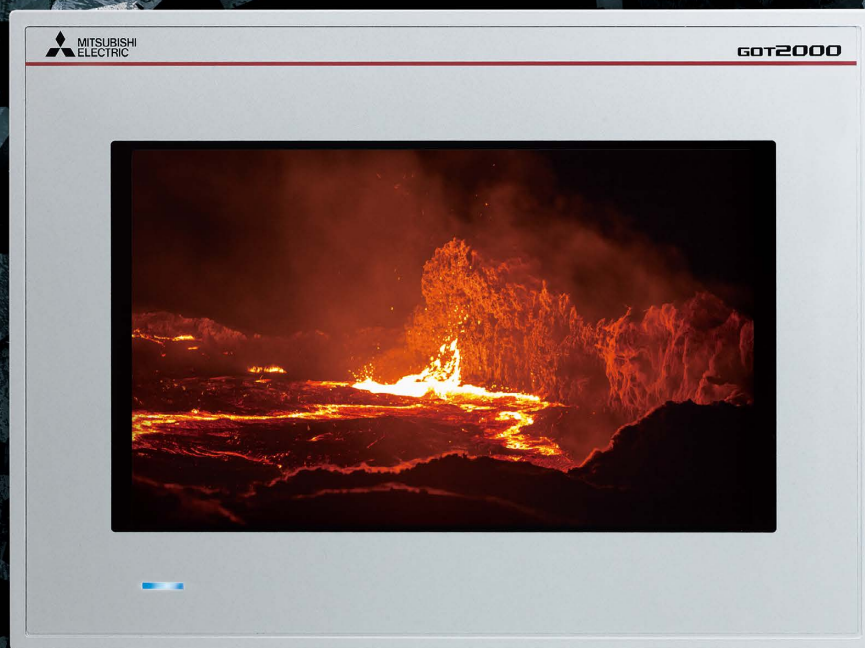
Changes for the Better

FACTORY AUTOMATION

Graphic Operation Terminal GOT2000 Series Rugged Model

e-Factory

Designed for extreme environments



GOT2000 *Rugged*

Graphic Operation Terminal

GT25 Rugged Model

With a larger working ambient temperature range and resistance to ultraviolet rays, the GT25 rugged model can be used even in harsh environments. The stylish design features a silver tone metal housing.



Remarkable!

Robust features

- 1** Wide operating temperature range **-20°C to 65°C**
- 2** High brightness, clear under daylight **2x brighter than non-rugged models**
- 3** UV resistant **Ultraviolet rays cut by approx. 95%**
- 4** Vibration and shock resistant **2x stronger than non-rugged models**
- 5** Water jet resistant **IP66F IP67F**
- 6** Compliant with standards **Safety Standards Maritime Certifications**

[See next page for details ▶▶](#)

GT2507T-WTSD

7" widescreen | WVGA 800x480 | TFT Color 65536 colors | 24 V DC

Built-in interface

2 Ethernet ports	Wireless LAN communication unit interface	
USB host & USB device	RS-232	RS-422/485
SD memory card interface	Sound output interface	

Actual size:
214(8.43) (W) × 158(6.22) (H) × 55(2.17) (D) mm(inch)

Features of the rugged model

1 Wide operating temperature range

The working ambient temperature has been expanded to -20°C to 65°C.

Now compatible with harsher environments, there's no need for heaters for low temperatures or fans or coolers for high temperatures.



2 High brightness, clear under daylight

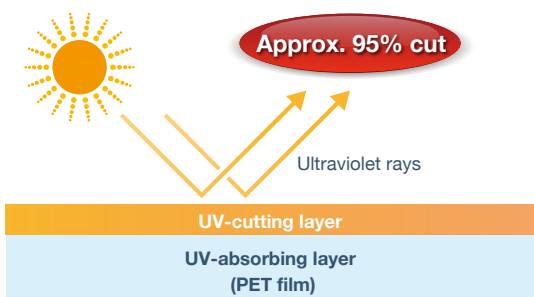
The high-brightness LCD panel (1000 cd/m²*) provides a clear screen view even under strong sunlight.

* Brightness of independent panel.



3 UV resistant

Ultraviolet rays are cut by approximately 95% (370 nm) with a UV-cutting layer and UV-absorbing layer. Degradation of the LCD panel or touch panel caused by ultraviolet rays is reduced. Use the optional UV protection sheet to further improve resistance to ultraviolet rays.



4 Vibration and shock resistant

Since the structure of the front panel has been reinforced with a metal housing, the rugged model can be used in environments that are subject to vibration or shock, such as construction equipment or snow plows.



5 Water jet resistant

The GOT front panel complies with IP67F and IP66F, and can be washed with high pressure water. This model is perfect for use in food processing system, etc.



IP□6: protected against the effect of direct powerful water jets from any direction

IP□7: protected against the effect of temporary immersion in water

6 Compliant with standards

The range of supported countries and applications is expanding as the GOT2000 complies with various Japanese and international standards.



*For the details on the latest compliance to standards, please refer to the Mitsubishi Electric Factory Automation Global website (www.MitsubishiElectric.com/fa).

See the following page for application examples ▶▶



Item	Specifications
Display	7" widescreen, TFT color LCD, 65536 colors
Resolution	WVGA 800 × 480 dots
Backlight	White LED
Panel color	Silver
Panel material	Aluminum
User memory	Memory for storage (ROM): 32 MB Memory for operation (RAM): 128 MB
Standard interface	Ethernet (2 ports), RS-232, RS-422/485 USB host (USB-A): 1 channel (USB 2.0 (High-Speed 480 Mbps)) USB device (USB Mini-B): 1 channel (USB 2.0 (High-Speed 480 Mbps)) Sound output interface (φ3.5 minijack), SD memory card interface, wireless LAN communication unit interface
Operating ambient temperature	-20 °C to 65 °C
Brightness (LCD panel)	1000 cd/m ² (Typ)
UV cutoff	Approximately 95% (370 nm)
Protective structure	Front: IP66F, IP67F Inside control panel: IP2X
Vibration resistance	19.6 m/s ² (continuous), 19.6 m/s ² (intermittent)
Shock resistance	392 m/s ² (40G)
Dedicated option	UV protective sheet, protective cover for oil, stand

Point!

■ External appearance [front face/rear face]



① **GOT front face**

The metal enclosure increases resistance against vibration and shock. Ultraviolet rays are cut by approximately 95% (370 nm). Also comply with IP66F and IP67F ratings.

② **Ethernet interface (2 ports)**

Use Ethernet to simultaneously connect to up to four types of industrial devices from different manufacturers. CC-Link IE Field Network Basic compatible devices can also be connected.

③ **RS-422/485 interface**

Connect to various industrial devices and barcode readers.

④ **RS-232 interface**

Connect to various industrial devices, barcode readers and serial printers.

⑤ **Sound output interface (φ3.5 minijack)**

Output sound by connecting φ3.5 stereo mini-plug (3-prong).

⑥ **USB interface: host (USB-A)**

Transfer project data or read the data (logging data, etc.) to or from the GOT using the USB memory. A USB mouse, keyboard, barcode reader*, or RFID reader* can also be connected.

* USB keyboard (HID) compatible model only

⑦ **USB interface: device (USB Mini-B)**

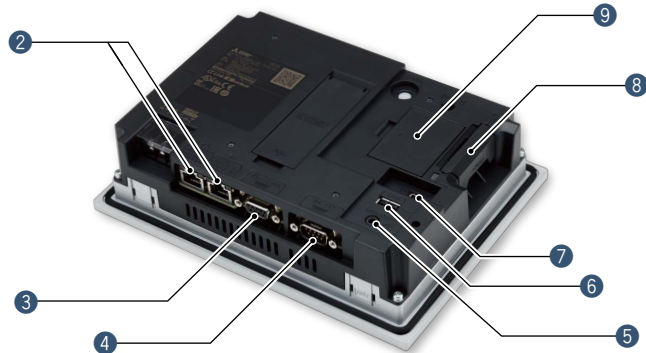
Connect to a personal computer and transfer data.

⑧ **SD memory card interface**

Save large volumes of data, including alarms and logging data.

⑨ **Wireless LAN communication unit interface**

Mount a wireless LAN communication unit.



The practical choice all over the world

■ Parking systems (parking tower, coin-operated parking, multi-storied parking, multi-storied bicycle parking, etc.)



The rugged model can be widely used as operation panels for various parking lots and automatic parking fee machines.

-20°C to 65°C **High-brightness LCD panel** **Ultraviolet ray resistant**

Recommended function: **GOT Mobile function**

Monitor the operation status and information on errors, etc., of the parking lot from an office or control center. There's no need to go to the site. Remote monitoring is possible with various information devices including personal computers and tablets.

→See page 8.

GOT Mobile

■ Power conditioner



The rugged model can be found in the energy monitoring system of power conditions installed outdoors.

High-brightness LCD panel **Ultraviolet ray resistant** **-20°C to 65°C**

Recommended function: **Logging function, alarm function**

Data, such as energy information, can be collected using the logging function. When used together with the alarm function, the status can be easily grasped when alarms or errors occur.

→See page 8.

■ EV charging stand



The rugged model is adopted as the operation screen for outdoor EV charging stands.

Ultraviolet ray resistant **High-brightness LCD panel** **-20°C to 65°C**

Recommended function: **Sound output function (audio guidance)**

Audio guidance can be played by connecting a speaker with amplifier to the standard sound output interface.

→See page 9.



See the following page for details on recommended functions ▶▶

■ Heavy machinery (status monitor screen for power shovels, cranes, and snow plows, etc.)



The rugged model is suitable as a status monitor screen in heavy machinery that is used outdoors and is easily subject to vibration and shock.

Vibration resistant, shock resistant High-brightness LCD panel
-20°C to 65°C Ultraviolet ray resistant IP66F

Recommended function: **Document display function**

When a problem occurs, PDF file format manuals can be confirmed with the GOT. Shorten time to recover from a problem by confirming recovery methods at the site.

→See page 8.

■ Food processing system



The rugged model is ideal as the operation panel for food processing systems that require high-pressure washing.

IP66F -20°C to 65°C Flat operation screen

Recommended function: **Operation authentication function, operation log function**

Operation and access authority can be set for each operator. The history of when, what, and how an operator performed operation can be recorded as history, and used to identify causes when a problem occurs.

→See page 9.

■ Ships Coming soon



The rugged model is suitable as a monitor screen for various ship operations (crane operations, etc.) and as the monitor screen in the pilothouse, where equipment is easily subject to vibration and shock.

Brightness adjustment Vibration resistant, shock resistant
-20°C to 65°C Maritime certifications Coming soon

Recommended function: **Brightness adjustment function**

The brightness adjustment mode can be switched between standard and low brightness, and the brightness can be adjusted in 32 levels in each mode. Select the brightness suitable for the application and place.

→See page 9.

Please read "Product application" in the Warranty on page 20 before using this product.

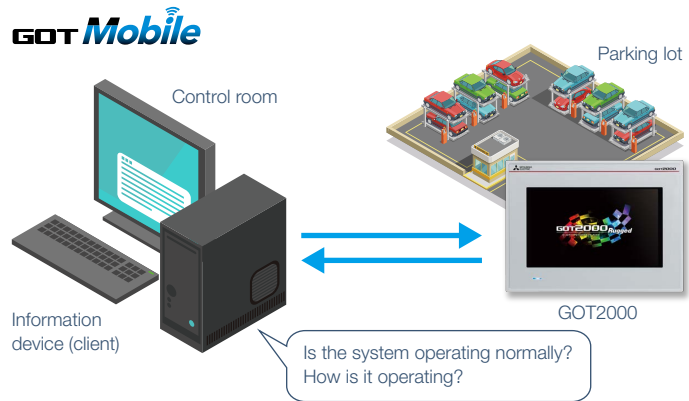
Recommended functions for the rugged model

■ GOT Mobile function

Via GOT at the site, the operating status of parking lots can be monitored from multiple computers and tablets in a remote location. Web browsers are used so that no special applications are required. Up to five information devices (clients) can simultaneously access a single GOT and each device can display different screen.

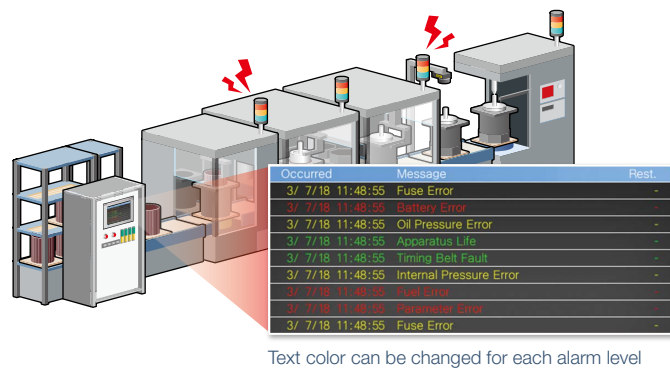
* The GOT Mobile function license (GT25-WEBSKEY-□) is required separately.

* Browsers (Google Chrome or Safari) are required on information devices.



■ Alarm function

GOT can be used to check alarms of connected devices. By showing alarms in different colors depending on the level and showing alarm details in a window screen, you can easily identify the cause of problem occurrence.

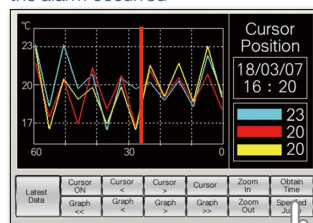


■ Logging function

GOT collects the data from various devices such as programmable controllers and temperature controllers, and displays the collected data in a graph and list. By using with the alarm function, graphs can be displayed when an alarm occurs so that it is useful for identifying the problem cause.

Conveniently use with the alarm function

Display the graph recorded when the alarm occurred



Locate a cursor at the position of the error found in the graph, and press the [Specified Jump] button

Select an alarm from the list, and press the [Specified Jump] button

Occurred	Message	Rest	Check
18/03/07 16:20	Line A error	14:01	14:02
18/03/07 13:53	Line B error		

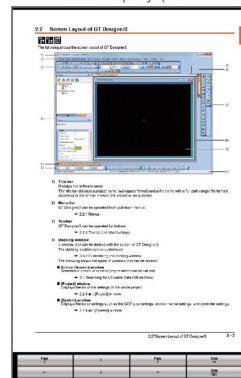
Below the table is a control panel with buttons for 'Cursor ON', 'Cursor OFF', 'Up', 'Down', 'Check', 'Check All', 'Delete All', 'Reset', 'Save', 'Ladder', 'Obtain Time', and 'Specified Jm'.

Display the alarm of the specified time

■ Document display function

GOT displays various kinds of documents such as operation manuals of an equipment. You can view PDF files and can instantly check the information you want with bookmark display and keyword searches.

Document display (vertical display)



Troubleshooting while checking manuals

Touch the PDF file and show switches

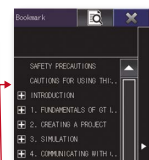


Search window



Enter a keyword to move to a page containing the keyword

Bookmark window



Move to the page you want to display

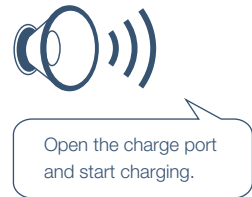
Show search result (Retain up to 10 items)

See the following page for HMI/GOT Screen Design Software GT Works3 ▶▶



Sound output function (audio guidance)

The sound can be output from a speaker that is connected to GOT. The audio guidance and sound effects (alarms) can be played when touch switches are touched or set conditions are satisfied.



Recommended!

Sound files can be created easily Speech synthesis function*

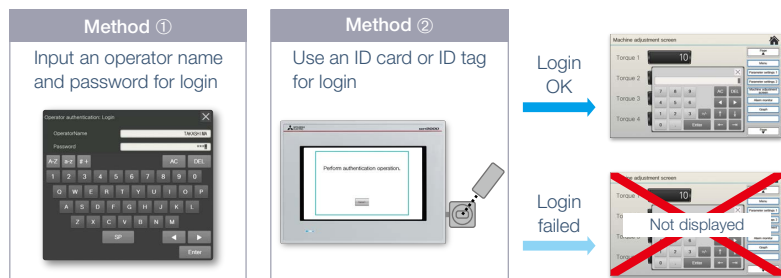
There are three types of sound files: messages, sound effects, and melodies. Messages can easily be created by entering arbitrary messages with GT Works3. Messages, sound effects, and melodies can be combined to make effective audio guidance. →See page 11.

Message	Sound effect	Melody
Create from arbitrary text	More than 50 files are included	More than 10 files are included

* GT Works Text to Speech License (SW1DND-GTVO-M) is required separately.

Operator authentication function

Setting the operation authority and the viewing authority achieves “enhanced security” and allows “individual access control”.



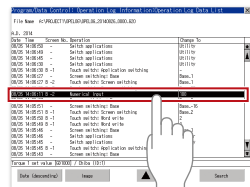
* Use of method ① combined with method ② is acceptable. Secure login management is achieved even when an external authentication device has failed.

Operation log function

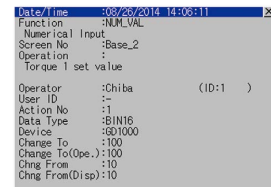
GOT records the operation information, such as “what, when, and how” an operation was performed, in chronological order in an SD memory card or USB memory.

Conveniently use with the operator authentication function

Check the “who, what, when, and how” of an operation performed



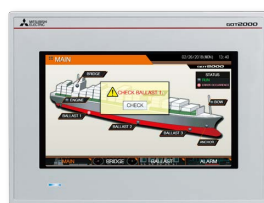
Check the brief information of the log in a list



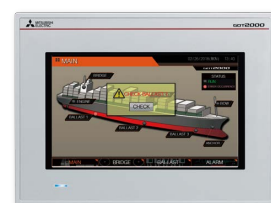
Check the detailed information of the log

Brightness adjustment function

Brightness can be adjusted in the utility screen of GOT. The brightness adjustment mode can be switched between standard and low brightness, and the brightness can be adjusted in 32 levels in each mode.



High brightness (standard mode, brightness 32)



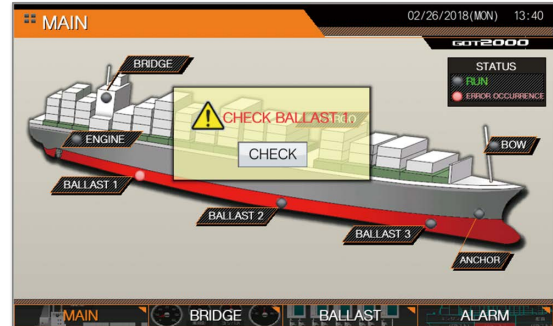
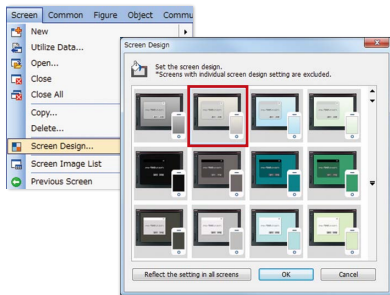
Low brightness (low brightness mode, brightness 32)

GT Works3 useful functions for engineering productivity

Just select a theme to create nice screens

Using [GOT Graphic Ver.2] of the graphic setting enables you to select your preferred design from various themes and set a beautiful background color.

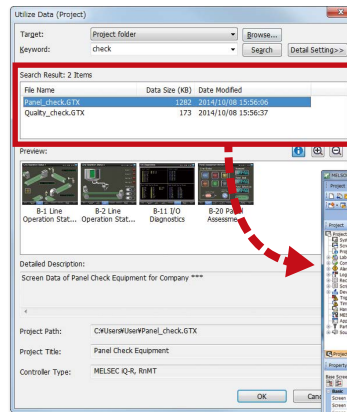
Select a favorite design



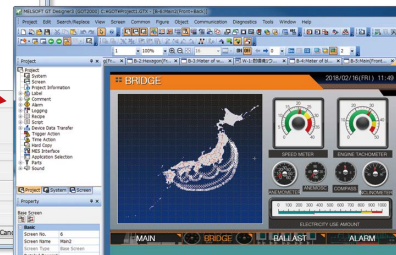
Screen with a beautiful gradation background

Reuse previous projects

Past projects can be utilized as is. The projects of a similar system configuration can be customized so that you can reduce time for screen creation.



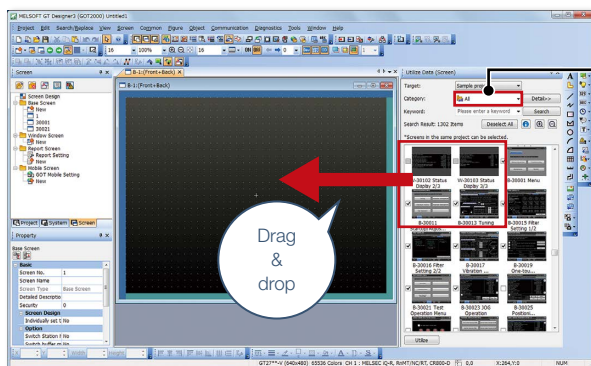
Select a project from the list and utilize the whole data



Reuse previous screens

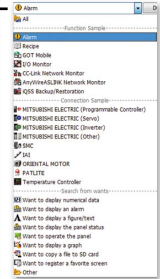
Individual screens can be utilized from sample screens* and past projects. The settings are also applied and reused by following the instructions in the wizard so that you can create project data easily.

* Various sample screens are included with GT Works3.



Multiple screens can be utilized simultaneously

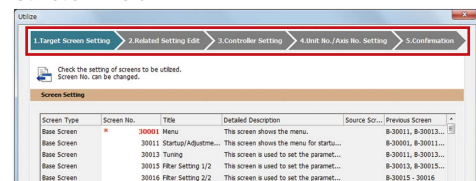
Easy searches from category lists



Various sample screens



Utilization wizard



Simple step navigation

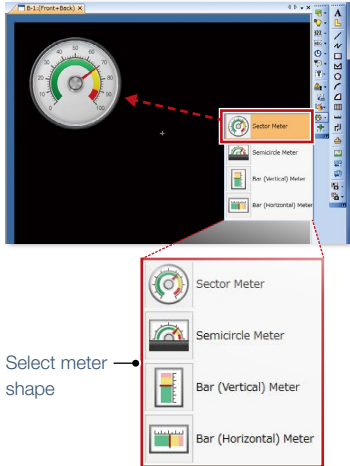


See the following page for system configuration and specification comparison ▶▶

■ Easily create stylish meters

Just select a meter from the preset list and you can create stylish, clear meters. The position and angle of scales can be adjusted by mouse operation and the shape and design can be changed easily. Warning color display indicates the machine status clearly.

Select from the toolbar



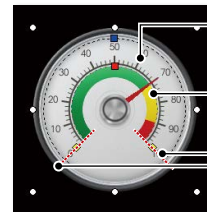
Select meter shape

Select from the preset list



The list includes various choices

Easy to adjust settings by mouse operation



Adjust scale position

Adjust warning color display position

Adjust scale angle



■ Easily create files for audio guidance

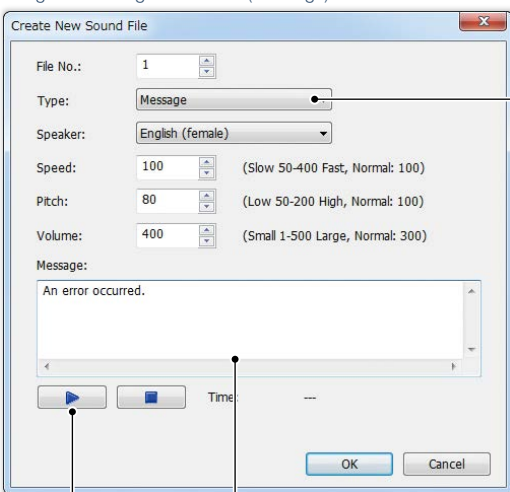
Just enter arbitrary text in GT Works3 to create a sound message that is output from GOT. The speaker (female/male), language, speed, pitch, and volume of the voice can be set. Messages can be created in 6 languages and you can create the sound notification system in multiple languages.

* To register or update messages, GT Works Text to Speech License (SW1DND-GTVO-M) is required.

Supported language

Male	Japanese	English	Chinese (Simplified)	Korean	Spanish
Female	Japanese	English	Chinese (Simplified)	Chinese (Traditional)	Spanish

Image of creating a sound file (message)



Select language and speaker (male/female)

Playback and check the sound

Enter an arbitrary message



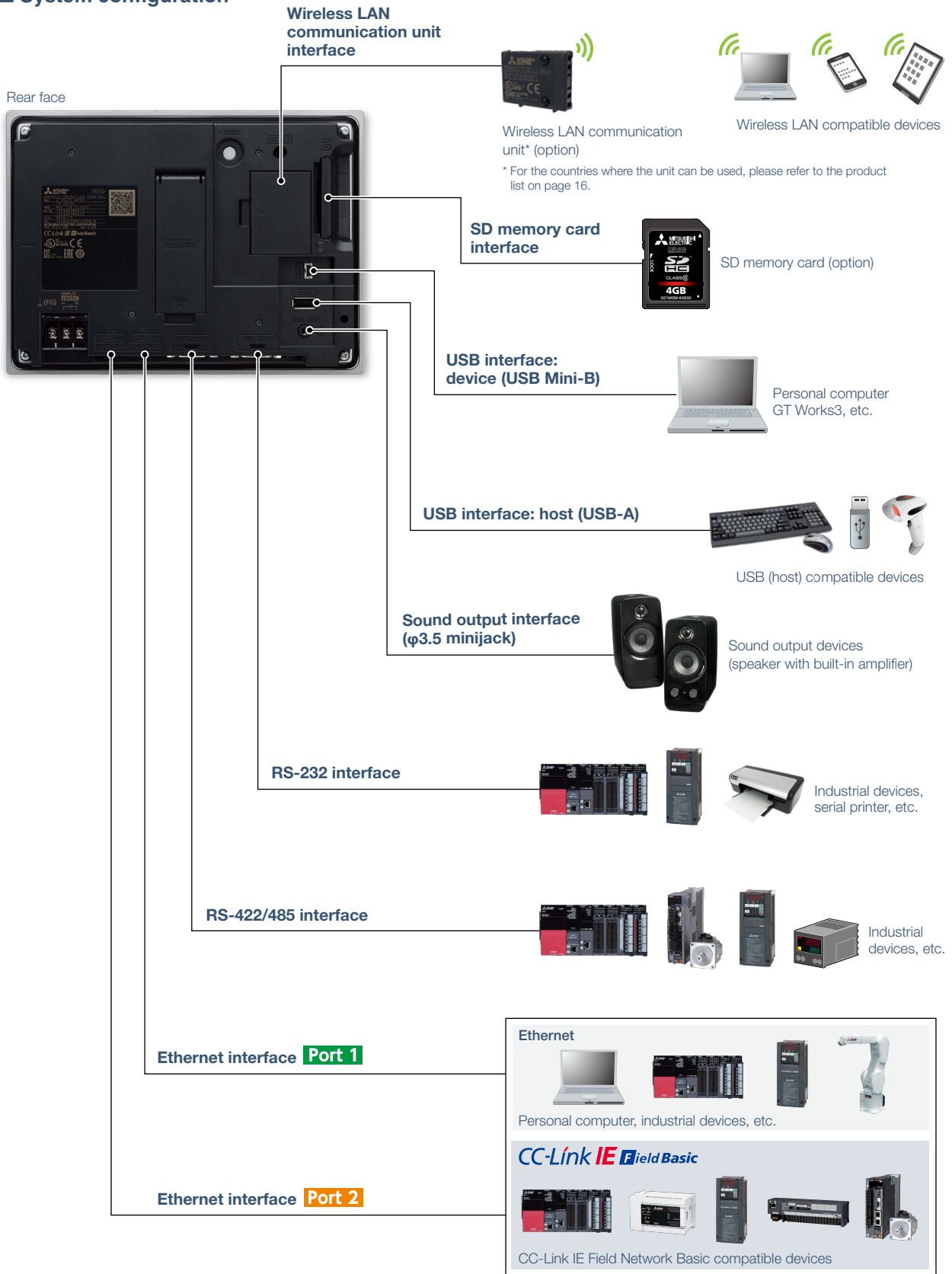
An error occurred.

系统发生异常。

エラーが発生しました。

Easily connect to various industrial devices

System configuration



* Both Ethernet interfaces (Port 1 and Port 2) can be used to connect to Ethernet compatible devices and CC-Link IE Field Network Basic compatible devices.

Communication units and options usable with the rugged model can be used in the environment described in the general specifications of the rugged model on page 14. For using peripheral devices to be connected to the GOT, please refer to the relevant product manual.

Specification comparison

For details of functions, supported controllers, connection types, and required options, please refer to the relevant manual or Help of the GOT2000 Series.

Comparison of specifications with standard models and wide models

●: Supported —: Not supported

Item	Necessary devices ¹	GT25 rugged model	GT27	GT25 ⁶	GT25 wide model
Operating ambient temperature		-20 °C to 65 °C	0 °C to 55 °C	0 °C to 55 °C	0 °C to 55 °C
Storage ambient temperature		-30 °C to 75 °C	-20 °C to 60 °C	-20 °C to 60 °C	-20 °C to 60 °C
Vibration resistance (continuous, intermittent)		19.6 m/s ² , 19.6 m/s ²	4.9 m/s ² , 9.8 m/s ²	4.9 m/s ² , 9.8 m/s ²	4.9 m/s ² , 9.8 m/s ²
Shock resistance		392 m/s ² (40G)	147 m/s ² (15G)	147 m/s ² (15G)	147 m/s ² (15G)
UV cutoff		Approximately 95% (370 nm)	—	—	—
Protective structure		Front: IP66F, IP67F In control panel: IP2X	Front: IP67F In control panel: IP2X	Front: IP67F In control panel: IP2X	Front: IP67F In control panel: IP2X
Screen size		7" widescreen	15", 12.1", 10.4", 8.4", 5.7"	12.1", 10.4", 8.4", 5.7"	10.1" widescreen, 7" widescreen
Resolution		WVGA	XGA, SVGA, VGA	SVGA, VGA	WXGA, WVGA
Display color		65536 colors	65536 colors	65536 colors	65536 colors
Human sensor		—	● ²	—	—
Touch panel simultaneous press (2 points)		—	●	—	—
Memory for storage (ROM)		32 MB	Other than below: 57 MB GT2705: 32 MB	32 MB	32 MB
Memory for operation (RAM)		128 MB	Other than below: 128 MB GT2705: 80 MB	80 MB	128 MB
RS-232		●	●	●	●
RS-422/485		●	●	●	●
Ethernet	(Ethernet communication unit)	2 ports as standard	2 ports by installing communication unit	2 ports by installing communication unit	2 ports as standard
USB interface (host)		●	●	●	●
USB interface (device)		●	●	●	●
SD memory card interface		●	●	●	●
Sound output interface		●	—	—	●
Side interface, Wireless LAN communication unit interface	Wireless LAN communication unit	●	●	● ⁴	●
Extension interface	Communication units, option units	—	●	● ⁴	—
UV protective sheet (for the rugged model)		●	—	—	—
Protective sheet		—	●	●	●
Protective cover for oil		●	●	●	—
Stand		●	●	●	●
Alarm display (user/system)	(SD memory card or USB memory, battery)	●	●	●	●
Graph, Historical trend graph	(SD memory card or USB memory)	●	●	●	●
Graphical meter		●	●	●	●
Document display	SD memory card	●	● ²	●	●
Logging	(SD memory card or USB memory, battery)	●	●	●	●
Recipe, Recipe display (record list)	(SD memory card or USB memory, battery)	●	●	●	●
Hard copy	File output	●	●	●	●
	Serial printer output	●	●	●	●
	PictBridge printer output	Printer unit	—	● ⁴	—
GOT Mobile function	License, (SD memory card)	●	●	●	●
VNC server function	License	●	●	●	●
Remote personal computer operation function (Ethernet)	License	●	●	●	●
Video display function	Video input unit or Video/RGB input unit	—	● ³	—	—
RGB display function	RGB input unit or Video/RGB input unit	—	● ³	—	—
Multimedia function	Multimedia unit, CF card	—	● ³	—	—
RGB output function	RGB output unit	—	● ³	—	—
Report function	Serial printer output	(SD memory card or USB memory)	●	●	●
	PictBridge printer output	SD memory card or USB memory, printer unit	●	●	● ⁴
Sound output function	Sound output unit ⁷	●	●	● ⁴	●
MES interface function	License, (SD memory card)	●	●	●	●
Wireless LAN function	Wireless LAN communication unit	●	●	● ⁴	●
SoftGOT-GOT link	License key	●	●	●	●
Backup/Restoration	SD memory card or USB memory	●	●	●	●
Multi-channel function		4 channels (No units can be mounted)	4 channels (Up to 3 units)	4 channels (Up to 3 units ⁴)	4 channels (No units can be mounted)
Security key authentication function		●	●	●	●
IP filter function		●	●	●	●
Vertical display ⁵		● (Rotate 90° to left)	● (Rotate 90° to left)	(Other than below: rotate 90° to left GT2505: rotate 90° to right)	● (Rotate 90° to left)
Sequence program monitor (iQ-R ladder)	SD memory card or USB memory	●	●	●	●
Sequence program monitor (Ladder)	SD memory card or USB memory	●	●	●	●
Sequence program monitor (SFC)	SD memory card or USB memory	●	●	●	●
Network monitor		●	●	●	●
CC-Link IE Field Network diagnostics		●	●	●	●
Intelligent module monitor		●	●	●	●
R/O motion monitor		●	●	●	●
Log viewer	(SD memory card or USB memory)	●	●	●	●
System launcher		●	●	●	●

¹ Necessary units when using GOT are shown. Parenthesized devices are required depending on conditions of use.

Communication units and options usable with the rugged model can be used in the environment described in the general specifications of the rugged model on page 14.

² GT2715-XTBA, GT2715-XTBD, GT2712-STBA, GT2712-STBD, GT2712-STWA, GT2712-STWD only.

³ Excluding GT2705-VTBD.

⁴ Excluding GT2505-VTBD.

⁵ Remote personal computer operation function (Ethernet) cannot be used.

Utility screen, monitor and data management screens that are displayed from the utility screen (sequence program monitor, etc.), video camera images in the multimedia and video display functions are displayed horizontally.

For the details of other GOT operations when placed vertically, please refer to the relevant product manual or Help.

⁶ Hardware specifications and options of GT25 handy models differ from the descriptions in the column. For the details, please refer to the GOT2000 Series User's Manual (Hardware).

⁷ The GT25 rugged model and GT25 wide models have a built-in sound output interface so that the sound output unit is not required.

Specifications

General specifications

Item	Specifications ⁵					
Operating ambient temperature ¹	-20 °C to 65 °C					
Storage ambient temperature	-30 °C to 75 °C					
Operating ambient humidity	10% RH to 90% RH, non-condensing					
Storage ambient humidity	10% RH to 90% RH, non-condensing					
Vibration resistance	IEC 60068-2-6	Under intermittent vibration	Frequency	Acceleration	Half amplitude	Sweep count
			5 to 8.4 Hz	—	7.0 mm	10 times in each X, Y, or Z direction
		8.4 to 150 Hz	19.6 m/s ²	—	—	
		Under continuous vibration	5 to 8.4 Hz	—		7.0 mm
8.4 to 150 Hz	19.6 m/s ²	—	—			
Shock resistance	IEC 60068-2-27 (392 m/s ² (40G), 3 times in each X, Y, or Z direction)					
Operating atmosphere	No greasy fumes, corrosive gas, flammable gas, excessive conductive dust, and direct sunlight (as well as at storage)					
Operating altitude ²	2000 m or less					
Installation location	Inside control panel					
Overvoltage category ³	II or less					
Pollution degree ⁴	2 or less					
Cooling method	Self-cooling					
Grounding	Grounding with a ground resistance of 100 Ω or less by using a ground cable that has a cross-sectional area of 2 mm ² or more. If impossible, connect the ground cable to the control panel.					

- *1 Includes the temperature inside the enclosure of the control panel to which the GOT is installed.
- *2 Do not use or store the GOT under a pressure higher than the atmospheric pressure at altitude 0 m. Doing so may cause a malfunction. Air purging by applying pressure to the control panel may create clearance between the surface sheet and the touch panel. This may cause the touch panel to be not sensitive enough or the sheet to come off.
- *3 This indicates the section of the power supply to which the equipment is assumed to be connected between the public electrical power distribution network and the machinery within the premises. Category II applies to equipment that is supplied with power from fixed facilities. The withstand surge voltage for the equipment with the rated voltage up to 300 V is 2500 V.
- *4 This indicates the occurrence rate of conductive material in an environment where a device is used. Pollution degree 2 indicates an environment where only non-conductive pollution occurs normally and a temporary conductivity caused by condensation shall be expected depending on the conditions.
- *5 Communication units and options usable with the rugged model can be used in the environment described in the general specifications of the rugged model. For using peripheral devices to be connected to the GOT, please refer to the relevant product manual.

For the status of conforming to various standards and laws (CE, ATEX, UL/cUL, Class I Division 2, EAC, KC, KCs, and maritime certifications [ABS/BV/DNV GL/LR/NK/RINA]), please refer to the Mitsubishi Electric Factory Automation Global website (www.MitsubishiElectric.com/fa/).

Precautions for use

- Do not use the GOT as the warning device that may cause a serious accident. An independent and redundant hardware or mechanical interlock is required to configure the device that displays and outputs serious warning. Failure to observe this instruction may result in an accident due to incorrect output or malfunction.
- Use the GOT in the environment that satisfies the general specifications described in this catalog. Not doing so can cause an electric shock, fire, malfunction or product damage or deterioration.
- The GOT rugged model uses the environmental protection sheet (not replaceable) with UV protection function on the front surface. Therefore, it is possible to suppress deterioration of the touch panel or the liquid crystal display panel that may be caused by ultraviolet rays. Note that if the rugged model is exposed to ultraviolet rays for an extended period of time, the front surface may turn yellow. If the rugged model is likely to be exposed to ultraviolet rays for an extended period of time, it is recommended to use a UV protective sheet (option).
- Before cleaning the GOT, be sure to turn off the power. Before cleaning, check the following items.
 - Ensure that there are no problems with the installation condition of the GOT to the control panel.
 - Ensure that there are no damages on the environmental protection sheet (not replaceable).
 If the environmental protection sheet peels or the cleaning solution enters between the sheet and the display section during cleaning, stop the cleaning immediately. In such a case, do not use the GOT.
- Note that the structure does not guarantee protection in all users' environments. Before using the product, fully grasp the communication status and the system operation in the actual use environment. In addition, be sure to perform periodical maintenance and check that there are no problems with GOT.



See the following page for Components names/External dimensions/Panel cut dimensions/Product list ▶▶

Power supply specifications

Item	Specifications	
Power supply voltage	24 V DC (+25%, -20%)	
Power supply frequency	—	
Power consumption	Under the maximum load	
	Main unit	17 W or less
	Main unit (backlight OFF)	11 W
	Main unit (backlight OFF)	7 W
Inrush current	59 A or less (2 ms, ambient temperature: 25 °C, under the maximum load)	
Permissible instantaneous power failure time	5 ms or less	
Noise immunity	Noise voltage: 500 Vp-p, noise width: 1 μs, measured by a noise simulator with noise frequency ranging from 25 Hz to 60 Hz	
Withstand voltage	350 V AC for 1 minute across power terminals and earth	
Insulation resistance	500 V DC across power terminals and earth, 10 M Ω or more by an insulation resistance tester	

Performance specifications

Item	Specifications	
Display section ^{1,2}	Display device	TFT color LCD
	Screen size	7" widescreen
	Resolution	WVGA: 800 × 480 dots
	Display size	152.40(6.00) (W) × 91.44(3.60) (H) mm(inch)
	Number of displayed characters	16-dot standard font: 50 characters × 30 lines (two-byte characters) 12-dot standard font: 66 characters × 40 lines (two-byte characters)
	Display color	65536 colors
	Brightness adjustment	32 levels
	Backlight	LED (Not replaceable)
	Backlight life ⁴	Approx. 50000 h (operating ambient temperature: 25°C, display intensity: 50%)
Touch panel ^{3,9}	Type	Analog resistive film
	Key size	Minimum 2 × 2 dots ⁷ (per key)
	Simultaneous press	Not available ⁵ (Only 1 point can be touched.)
	Life	1 million touches or more (operating force: 0.98 N or less)
Panel color	Silver	
User memory	User memory capacity	Memory for storage (ROM) ¹⁰ : 32 MB Memory for operation (RAM): 128 MB
	Life (number of write times)	100000 times
Built-in clock precision	±90 seconds/month (ambient temperature: 25 °C)	
Battery		GT11-50BAT lithium battery
	Data to be backed up	SRAM data, clock data, system status log data
	Life	Approx. 5 years (ambient temperature: 25 °C)
Built-in interface	RS-232	1 channel Transmission speed: 115200, 57600, 38400, 19200, 9600, 4800 bps Connector shape: D-sub 9-pin (male)
	RS-422/485	1 channel Transmission speed: 115200, 57600, 38400, 19200, 9600, 4800 bps Connector shape: D-sub 9-pin (female)
	Ethernet	2 channels Data transfer method: 100BASE-TX, 10BASE-T Connector shape: RJ-45 (modular jack)
	USB (host)	1 channel (rear face) USB version: USB 2.0 (High-Speed 480 Mbps) Connector shape: USB-A
	USB (device)	1 channel (rear face) USB version: USB 2.0 (High-Speed 480 Mbps) Connector shape: USB Mini-B
	SD memory card ¹⁰	1 channel, SDHC compliant (maximum 32 GB)
	Wireless LAN communication unit interface	For installing a wireless LAN communication unit
	Sound output interface	1 channel, WAV format (16 bits, 8,000 kHz/16,000 kHz, monoral) applicable plug: φ3.5 stereo mini-plug (3-prong)
Buzzer output	Single tone (tone and tone length adjustable)	
POWER LED	2 colors (blue and orange)	
UV cutoff	Front: approximately 95% (370 nm)	
Protective structure ⁶	Front: IP66F ⁸ , IP67F ⁸ Inside control panel: IP2X	
Safety standards, radio laws	CE, UL, cUL, EAC, KC (as of May 2018)	
External dimensions	214(8.43) (W) × 158(6.22) (H) × 55(2.17) (D) mm(inch)	
Panel cut dimensions	197(7.76) (W) × 141(5.55) (H) mm(inch)	
Weight (excluding a fitting)	1.2(2.6) kg(lb)	
Compatible software package	GT Works3 Version1.195D or later	

¹ As a characteristic of liquid crystal display panels, bright dots (always lit) and dark dots (never lit) may appear on the panel. Since liquid crystal display panels comprise a great number of display elements, the appearance of bright and dark dots cannot be reduced to zero. Individual differences in liquid crystal display panels may cause differences in color, uneven brightness and flickering. Note that these phenomena are characteristics of liquid crystal display panels and it does not mean the products are defective or damaged.

² Flickering may occur due to vibration, shock, or the display colors.

³ When a stylus is used, the touch panel has a life of 100 thousand touches. The stylus must satisfy the following specifications.
• Material: polyacetal resin • Tip radius: 0.8 mm or more

⁴ To prevent the display section from burning in and lengthen the backlight life, enable the screen save function and turn off the backlight.

⁵ If you touch two points or more simultaneously on the touch panel, a touch switch near the touched points may operate unexpectedly. Do not touch two points or more simultaneously on the touch panel.

⁶ Note that the structure does not guarantee protection in all users' environments. The GOT may not be used in certain environments where it is subjected to splashing oil or chemicals for a long period of time or soaked in oil mist.

⁷ The minimum size of a key that can be arranged. To ensure safe use of the product, the following settings are recommended.

• Key size: 16 × 16 dots or larger • Distance between keys: 16 dots or more

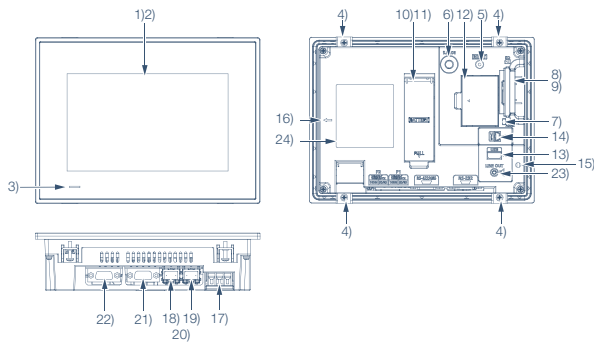
⁸ The suffix "F" of IP66F and IP67F is a symbol that indicates protection rate against oil. It is described in the Appendix of Japanese Industrial Standard JIS C 0920.

⁹ Repeatedly touching the outer edge of the actual display area may cause the product to fail.

¹⁰ While writing data to the memory for storage (ROM) or an SD memory card, if GOT is powered off, the data may be corrupted which may cause the GOT to stop operating.

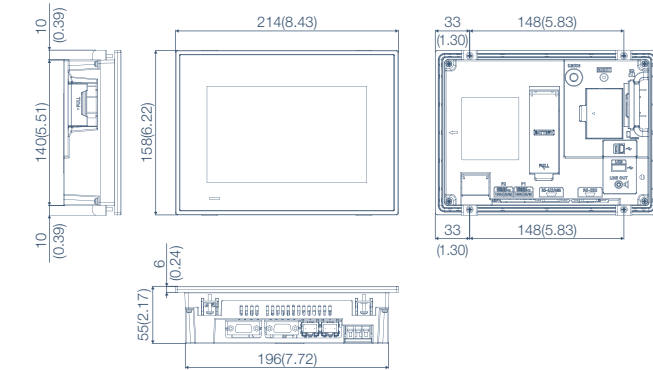
Components names/External dimensions/Panel cut dimensions/Product list

Components names



- | | |
|--|---------------------------------------|
| 1) Display section | 13) USB interface (host/rear face) |
| 2) Touch panel | 14) USB interface (device/rear face) |
| 3) POWER LED | 15) Cable clamp mounting hole |
| 4) Unit installation fitting | 16) Vertical installation arrow mark |
| 5) Reset switch | 17) Power terminal |
| 6) S.MODE switch | 18) Ethernet interface (Port 1) |
| 7) SD memory card access LED | 19) Ethernet interface (Port 2) |
| 8) SD memory card interface (inside the cover) | 20) Ethernet communication status LED |
| 9) SD memory card cover | 21) RS-422/485 interface |
| 10) Battery (inside the cover) | 22) RS-232 interface |
| 11) Terminating resistor setting switch (inside the cover) | 23) Sound output interface |
| 12) Wireless LAN communication unit interface (inside the cover) | 24) Rating plate |

External dimensions

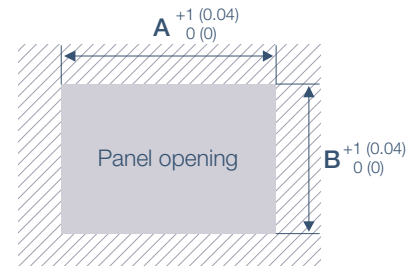


Unit: mm (inch)

Panel cut dimensions

Unit: mm (inch)

Screen size	A	B
7" widescreen	197 (7.76)	141 (5.55)



* Panel thickness: 1.6 mm to 4 mm (0.06 inch to 0.16 inch)

Product list

GOT

Classification	Model	Screen size	Display section Display color	Panel color	Power	
Rugged model	GT25	GT2507F-WTSD NEW	7" WVGA	TFT color 65536 colors	Silver	24 V DC

Communication unit

Product name	Model	Specifications
Wireless LAN communication unit ¹	GT25-WLAN	IEEE802.11b/g/n compliant, built-in antenna, wireless LAN access point (base station) ² , station (client), connection to personal computer, tablet, smartphone Compliance with ³ : Japan Radio Law, FCC standards, RE Directive ⁴ (R&TTE Directive), SRRC, KC

¹ Data transfer in wireless LAN communication may not be as stable as that in cable communication. A packet loss may occur depending on the surrounding environment and the installation location. Be sure to perform a confirmation of operation before using this product.

² When [Operation Mode] is set to [Access Point] in [Wireless LAN Setting] of GT Designer3, up to five stations are connectable.

³ The product with hardware version A complies with Japan Radio Law and can be used only in Japan. The product with hardware version B or later complies with FCC standards and R&TTE Directive and can be used in Japan, the United States, the EU member states, Switzerland, Norway, Iceland, and Liechtenstein. The product with hardware version D or later complies with SRRC and KC and can be used in Japan, the United States, the EU member states, Switzerland, Norway, Iceland, Liechtenstein, China (excluding Hong Kong, Macau, Taiwan), and South Korea. For the latest information about countries where the unit can be used, please refer to the Mitsubishi Electric Factory Automation Global website (www.MitsubishiElectric.com/fa/).

⁴ The product complies with the RE Directive from March 31, 2017.



See the following page for GOT2000 lineup ▶▶

Options

Product name	Model	Specifications
UV protective sheet (for the rugged model) ^{*1}	GT25T-07WPSVC NEW	For 7" rugged model <ul style="list-style-type: none"> • Antiglare type (UV cutoff) • Transparent • Without a hole for the USB environmental protection cover • 1 sheet
Protective cover for oil ^{*2}	GT25T-07WPCO NEW	For 7" rugged model
Stand	GT25T-07WSTAND NEW	For 7" rugged model
SD memory card	NZ1MEM-2GBSD	SD memory card for GOT, 2 GB
	NZ1MEM-4GBSD	SDHC memory card for GOT, 4 GB
	NZ1MEM-8GBSD	SDHC memory card for GOT, 8 GB
	NZ1MEM-16GBSD	SDHC memory card for GOT, 16 GB
Battery	GT11-50BAT	Battery for backup of SRAM data, clock data, and system status log data (for replacement)
Panel-mounted USB port extension ^{*2}	GT14-C10EXUSB-4S	Cable length 1 m, for routing the USB port (host) of the GOT rear face to the front side of the control panel
	GT10-C10EXUSB-5S	Cable length 1 m, for routing the USB port (device) of the GOT rear face to the front side of the control panel
USB cable (data transfer cable)	GT09-C30USB-5P	Cable length 3 m, for connecting a personal computer (screen design software) and GOT

*1 UV protective sheet for the rugged model does not comply with IP66F and IP67F.

*2 Protective cover for oil for the rugged model and panel-mounted USB port extension do not comply with IP66F.

Software

Product name	Model	Description
HMI/GOT Screen Design Software MELSOFT GT Works3	SW1DND-GTWK3-E	Standard license product
	SW1DND-GTWK3-EA	English Version Volume license product ^{*1*5}
	SW1DND-GTWK3-EAZ	Additional license product ^{*1*2}
GT Works Text to Speech License ^{*4}	SW1DND-GTVO-M	Standard license product
VNC Server Function License ^{*3}	GT25-VNCSKEY-1	1 license
	GT25-VNCSKEY-5	5 licenses
	GT25-VNCSKEY-10	10 licenses
	GT25-VNCSKEY-20	20 licenses
GOT Mobile Function License ^{*3}	GT25-WEBSKEY-1	1 license
	GT25-WEBSKEY-5	5 licenses
	GT25-WEBSKEY-10	10 licenses
	GT25-WEBSKEY-20	20 licenses

*1 The desired number of licenses (2 or more) can be purchased. For details, please contact your local sales office.

*2 This product does not include the DVD-ROM. Only the license certificate with the product ID No. is issued.

*3 1 license is required for 1 GOT unit.

*4 To edit sound files, each personal computer requires one license.

*5 Volume license product is not sold separately and should be purchased with the standard license product.

Cables

Various connection cables are available. For more details, please refer to the GOT2000 Series Connection Manual.



GT27

Advanced model with multi-touch gesture functions

Ethernet RS-232 RS-422/485 CC-Link IE Control CC-Link IE Field*1 CC-Link IE Field Basic CC-Link Bus MELSECNET

*1 The CC-Link IE Field Network communication unit and GOT set is also available.

15 inch

TFT
65536
colors AC
DC



XGA
1024x768

GT2715-STBA
GT2715-STBD

12.1 inch

TFT
65536
colors AC
DC



SVGA
800x600

GT2712-STBA
GT2712-STBD
GT2712-STWA [White model]
GT2712-STWD [White model]

10.4 inch

TFT
65536
colors AC
DC



SVGA
800x600

GT2710-STBA
GT2710-STBD
VGA
640x480
GT2710-VTBA
GT2710-VTBD
GT2710-VTWA [White model]
GT2710-VTWD [White model]

GT25

High performance, cost efficient, mid-range model

Ethernet RS-232 RS-422/485 CC-Link IE Control*2 CC-Link IE Field*1*2 CC-Link IE Field Basic CC-Link*2 Bus*2 MELSECNET*2

*1 The CC-Link IE Field Network communication unit and GOT set is also available. *2 Not supported by GT2505.

12.1 inch

TFT
65536
colors AC
DC



SVGA
800x600

GT2512-STBA
GT2512-STBD

10.4 inch

TFT
65536
colors AC
DC



VGA
640x480

GT2510-VTBA
GT2510-VTBD
GT2510-VTWA [White model]
GT2510-VTWD [White model]

8.4 inch

TFT
65536
colors AC
DC



VGA
640x480

GT2508-VTBA
GT2508-VTBD
GT2508-VTWA [White model]
GT2508-VTWD [White model]

GT25 Wide

GOT2000 widescreen expands your view

Ethernet (2 ports) RS-232 RS-422/485 CC-Link IE Field Basic Sound output (built-in)

10.1 inch

TFT
65536
colors DC



WXGA
1280x800

GT2510-WXTBD
GT2510-WXTSD

7 inch

TFT
65536
colors DC



WVGA
800x480

GT2507-WTBD
GT2507-WTSD

NEW

7 inch

TFT
65536
colors DC



WVGA
800x480

GT2507T-WTSD

Ethernet (2 ports)
RS-232 RS-422/485
CC-Link IE Field Basic
Sound output (built-in)

GT23

Unchallenged cost performance

Ethernet RS-232 RS-422/485 CC-Link IE Field Basic

10.4 inch

TFT
65536
colors AC
DC



VGA
640x480

GT2310-VTBA
GT2310-VTBD

8.4 inch

TFT
65536
colors AC
DC



VGA
640x480

GT2308-VTBA
GT2308-VTBD



HMI/GOT Screen Design Software

Professional Designs in Just a Few Clicks

You can effectively use existing screen assets or design aesthetic screens with GT Works3, the software that can be commonly used for the GOT2000 Series.

GOT Screen Design Software
MELSOFT GT Works3+plus

Multi-touch gesture | Multimedia*2 | Video/RGB*2 | Sound output | External I/O

*2 Not supported by GT2705.

SoftGOT

8.4 inch

TFT
65536
colors

AC
DC



SVGA
800×600

GT2708-STBA
GT2708-STBD

VGA
640×480

GT2708-VTBA
GT2708-VTBD

5.7 inch

TFT
65536
colors

DC



VGA
640×480

GT2705-VTBD

GOT2000 compatible
software

65536
colors



USB port
license key



GOT2000 compatible HMI software
GT SoftGOT2000 Version1

GT SoftGOT2000 is an HMI software that allows GOT2000 functions to operate on a personal computer or panel computer. Various industrial devices can be connected and monitored.
Resolution: 640 to 1920 × 480 to 1200

* A separate license key must be mounted during use.

Sound output*2 | External I/O*2

HMI functionality in the palm of your hand

GT25 Handy

Ethernet | RS-232 | RS-422/485*1 | CC-Link IE Field Basic

*1 GT2505HS supports RS-422 only.

5.7 inch

TFT
65536
colors

DC



VGA
640×480

GT2505-VTBD

6.5 inch

TFT
65536
colors

DC



VGA
640×480

GT2506HS-VTBD

NEW

5.7 inch

TFT
65536
colors

DC



VGA
640×480

GT2505HS-VTBD

GT25

Open frame

A new style of GOT2000

Ethernet | RS-232 | RS-422/485 | CC-Link IE Control | CC-Link IE Field | CC-Link IE Field Basic | CC-Link | Bus | MELSECNET | Sound output | External I/O

12.1 inch

TFT
65536
colors

AC
DC



SVGA
800×600

GT2512F-STNA
GT2512F-STND

10.4 inch

TFT
65536
colors

AC
DC



VGA
640×480

GT2510F-VTNA
GT2510F-VTND

8.4 inch

TFT
65536
colors

AC
DC



VGA
640×480

GT2508F-VTNA
GT2508F-VTND

Compact models with basic functions

Ethernet*1 | RS-232*1 | RS-422/485*1 | CC-Link IE Field Basic*2

GT21

*1 Supported interfaces vary depending on the model. Please refer to descriptions in [] after the model.

*2 Supported only by the models equipped with an Ethernet port.

GT21 Wide

Ethernet
RS-232 | RS-422/485
CC-Link IE Field Basic

4.3 inch

TFT
65536
colors

DC



480×272

GT2104-RTBD
[Ethernet, RS-232, RS-422/485]

3.8 inch

TFT
mono-
chrome

DC

5-color LED



320×128

GT2103-PMBD [Ethernet, RS-422/485]
GT2103-PMBDS [RS-232, RS-422/485]
GT2103-PMBDS2 [RS-232 × 2 channels]
GT2103-PMBLS [RS-422] 5 V DC type

7 inch

TFT
65536
colors

DC



WVGA
800×480

GT2107-WTBD
GT2107-WTSD

For the status of conforming to various standards and laws, please refer to the Mitsubishi Electric Factory Automation Global website (www.MitsubishiElectric.com/fa/).

Warranty

Please confirm the following product warranty details before using this product.

Gratis Warranty Term and Gratis Warranty Range

If any faults or defects (hereinafter "Failure") found to be the responsibility of Mitsubishi occurs during use of the product within the gratis warranty term, the product shall be repaired at no cost via the sales representative or Mitsubishi Service Company. However, if repairs are required onsite at domestic or overseas location, expenses to send an engineer will be solely at the customer's discretion. Mitsubishi shall not be held responsible for any re-commissioning, maintenance, or testing on-site that involves replacement of the failed module.

■Gratis Warranty Term

The gratis warranty term of the product shall be for thirty-six (36) months after the date of purchase or delivery to a designated place.

Note that after manufacture and shipment from Mitsubishi, the maximum distribution period shall be six (6) months, and the longest gratis warranty term after manufacturing shall be forty-two (42) months. The gratis warranty term of repair parts shall not exceed the gratis warranty term before repairs.

■Gratis Warranty Range

- (1) The customer shall be responsible for the primary failure diagnosis unless otherwise specified. If requested by the customer, Mitsubishi Electric Corporation or its representative firm may carry out the primary failure diagnosis at the customer's expense. The primary failure diagnosis will, however, be free of charge should the cause of failure be attributable to Mitsubishi Electric Corporation.
- (2) The range shall be limited to normal use within the usage state, usage methods, usage environment, etc. which follow the conditions, precautions, etc. given in the instruction manual, user's manual, caution labels on the product, etc.
- (3) Even within the gratis warranty term, repairs shall be charged for in the following cases.
 - ① Failure occurring from inappropriate storage or handling, carelessness or negligence by the user. Failure caused by the user's hardware or software design.
 - ② Failure caused by unapproved modifications, etc., to the product by the user.
 - ③ When the Mitsubishi product is assembled into a user's device, Failure that could have been avoided if functions or structures, judged as necessary in the legal safety measures the user's device is subject to or as necessary by industry standards, had been provided.
 - ④ Failure that could have been avoided if consumable parts designated in the user's manual etc. had been correctly serviced or replaced.
 - ⑤ Replacement of consumable parts (battery, display device, touch panel, fuse, etc.).
 - ⑥ Failure caused by external irresistible forces such as fires or abnormal voltages, and Failure caused by force majeure such as earthquakes, lightning, wind and water damage.
 - ⑦ Failure caused by reasons unpredictable by scientific technology standards at time of shipment from Mitsubishi.
 - ⑧ Any other failure found not to be the responsibility of Mitsubishi or that admitted not to be so by the user.

Onerous repair term after discontinuation of production

- (1) Mitsubishi shall accept onerous product repairs for seven (7) years after production of the product is discontinued. Discontinuation of production shall be notified with Mitsubishi Technical Bulletins, etc.
- (2) Product supply (including repair parts) is not available after production is discontinued.

Overseas service

Overseas, repairs shall be accepted by Mitsubishi's local overseas FA Center. Note that the repair conditions at each FA Center may differ.

Exclusion of loss in opportunity and secondary loss from warranty liability

Regardless of the gratis warranty term, Mitsubishi shall not be liable for compensation to:

- (1) Damages caused by any cause found not to be the responsibility of Mitsubishi.
- (2) Loss in opportunity, lost profits incurred to the user by Failures of Mitsubishi products.
- (3) Special damages and secondary damages whether foreseeable or not, compensation for accidents, and compensation for damages to products other than Mitsubishi products.
- (4) Replacement by the user, maintenance of on-site equipment, start-up test run and other tasks.

Changes in product specifications

The specifications given in the catalogs, manuals or technical documents are subject to change without prior notice.

Product application

- (1) In using the Mitsubishi graphic operation terminal, the usage conditions shall be that the application will not lead to a major accident even if any problem or fault should occur in the graphic operation terminal device, and that backup and fail-safe functions are systematically provided outside of the device for any problem or fault.
- (2) The Mitsubishi graphic operation terminal has been designed and manufactured for applications in general industries, etc. Thus, applications in which the public could be affected such as in nuclear power plants and other power plants operated by respective power companies, and applications in which a special quality assurance system is required, such as for Railway companies or Public service purposes shall be excluded from the graphic operation terminal applications. In addition, applications in which human life or property that could be greatly affected, such as in aircraft, medical applications, incineration and fuel devices, manned transportation equipment for recreation and amusement, and safety devices, shall also be excluded from the graphic operation terminal range of applications. However, in certain cases, some applications may be possible, providing the user consults the local Mitsubishi representative outlining the special requirements of the project, and providing that all parties concerned agree to the special circumstances, solely at our discretion. In some of these cases, however, Mitsubishi Electric Corporation may consider the possibility of an application, provided that the customer notifies Mitsubishi Electric Corporation of the intention, the application is clearly defined and any special quality is not required.

Global support

Global FA Centers



China Mainland

Shanghai FA Center

Mitsubishi Electric Automation (China) Ltd.
10F, Mitsubishi Electric Automation Center, No.1386
Hongqiao Road, Changning District, Shanghai, China
Tel: +86-21-2322-3030 / Fax: +86-21-2322-3000(9611#)

Beijing FA Center

Mitsubishi Electric Automation (China) Ltd.
Beijing Branch
5/F, ONE INDIGO, 20 Jiuxianqiao Road Chaoyang
District, Beijing, China
Tel: +86-10-6518-8830 / Fax: +86-10-6518-2938

Tianjin FA Center

Mitsubishi Electric Automation (China) Ltd.
Tianjin Branch
Room 2003 City Tower, No.35, Youyi Road, Hexi
District, Tianjin, China
Tel: +86-22-2813-1015 / Fax: +86-22-2813-1017

Guangzhou FA Center

Mitsubishi Electric Automation (China) Ltd.
Guangzhou Branch
Room 1609, North Tower, The Hub Center, No.1068,
Xingang East Road, Haizhu District, Guangzhou, China
Tel: +86-20-8923-6730 / Fax: +86-20-8923-6715

Taiwan

Taipei FA Center

SETSUYO ENTERPRISE CO., LTD.
3F, No.105, Wugong 3rd Road, Wugu District,
New Taipei City 24889, Taiwan
Tel: +886-2-2299-9917 / Fax: +886-2-2299-9963

Korea

Korea FA Center

Mitsubishi Electric Automation Korea Co., Ltd.
7F-9F, Gangseo Hangang Xi-tower A, 401,
Yangcheon-ro, Gangseo-Gu, Seoul 07528, Korea
Tel: +82-2-3660-9632 / Fax: +82-2-3663-0475

ASEAN

ASEAN FA Center

Mitsubishi Electric Asia Pte. Ltd.
307 Alexandra Road, Mitsubishi Electric Building,
Singapore 159943
Tel: +65-6470-2480 / Fax: +65-6476-7439

Indonesia

Indonesia FA Center

PT. Mitsubishi Electric Indonesia Cikarang Office
Jl. Kenari Raya Blok G2-07A Delta Silicon 5,
Lippo Cikarang - Bekasi 17550, Indonesia
Tel: +62-21-2961-7797 / Fax: +62-21-2961-7794

Vietnam

Hanoi FA Center

Mitsubishi Electric Vietnam Co., LTD.
Ha Noi Office
6th Floor, Detech Tower, 8 Ton That Thuyet Street,
My Dinh 2 Ward, Nam Tu Liem District, Hanoi City,
Vietnam
Tel: +84-4-3937-8075 / Fax: +84-4-3937-8076

Ho Chi Minh FA Center

Mitsubishi Electric Vietnam Co., LTD.
Ho Chi Minh Head Office
Unit 01-04, 10th Floor, Vincom Center, 72 Le
Thanh Ton Street, District 1, Ho Chi Minh City,
Vietnam
Tel: +84-8-3910-5945 / Fax: +84-8-3910-5947

Thailand

Thailand FA Center

**Mitsubishi Electric Factory Automation
(Thailand) Co., Ltd.**
12th Floor, SV. City Building, Office Tower 1, No.896/19
and 20 Rama 3 Road, Kwaeng Bangpoongpang,
Khet Yannawa, Bangkok 10120, Thailand
Tel: +66-2682-6522 to 31 / Fax: +66-2682-6020

India

India Pune FA Center

Mitsubishi Electric India Pvt. Ltd.
Pune Branch
Emerald House, EL-3, J Block, M.I.D.C., Bhosari,
Pune - 411026, Maharashtra, India
Tel: +91-20-2710-2000 / Fax: +91-20-2710-2100

India Gurgaon FA Center

Mitsubishi Electric India Pvt. Ltd.
Gurgaon Head Office
2nd Floor, Tower A & B, Cyber Greens, DLF Cyber City,
DLF Phase - III, Gurgaon - 122002, Haryana, India
Tel: +91-124-463-0300 / Fax: +91-124-463-0399

India Bangalore FA Center

Mitsubishi Electric India Pvt. Ltd.
Bangalore Branch
Prestige Emerald, 6th Floor, Municipal No.2,
Madras Bank Road, Bangalore - 560001, Karnataka, India
Tel: +91-80-4020-1600 / Fax: +91-80-4020-1699

India Chennai FA Center

Mitsubishi Electric India Pvt. Ltd.
Chennai Branch
Citilights Corporate Centre No.1, Vivekananda
Road, Srinivasa Nagar, Chetpet, Chennai - 600031,
Tamil Nadu, India
Tel: +91-44-4554-8772 / Fax: +91-44-4554-8773

India Ahmedabad FA Center

Mitsubishi Electric India Pvt. Ltd.
Ahmedabad Branch
B/4, 3rd Floor, SAFAL Profitaire, Corporate Road,
Prahaldnagar, Satellite, Ahmedabad - 380015,
Gujarat, India
Tel: +91-79-6512-0063 / Fax: -

Americas

North America FA Center

Mitsubishi Electric Automation, Inc.
500 Corporate Woods Parkway, Vernon Hills, IL 60061, U.S.A.
Tel: +1-847-478-2100 / Fax: +1-847-478-2253

Mexico

Mexico FA Center

MITSUBISHI ELECTRIC AUTOMATION, INC.
Queretaro Office
Parque Tecnológico Innovacion Queretaro Lateral Carretera
Estatad 431, Km 2+200, Lote 91 Modulos 1 y 2 Hacienda La
Machorra, CP 76246, El Marques, Queretaro, Mexico
Tel: +52-442-153-6014 / Fax: -

Mexico City FA Center

Mitsubishi Electric Automation, Inc.
Mexico Branch
Mariano Escobedo #69, Col. Zona Industrial,
Tlalhepanitla Edo. Mexico, C.P.54030
Tel: +52-55-3067-7511 / Fax: -

Mexico

Mexico Monterrey FA Center

MITSUBISHI ELECTRIC AUTOMATION, INC.
Monterrey Office
Plaza Mirage, Av. Gonzalitos 460 Sur, Local 28, Col. San
Jeronimo, Monterrey, Nuevo Leon, C.P. 64640, Mexico
Tel: +52-55-3067-7521 / Fax: -

Brazil

Brazil FA Center

**Mitsubishi Electric do Brasil Comercio e
Servicos Ltda.**
Avenida Adelino Cardana, 293, 21 andar, Bethaville,
Barueri SP, Brasil CEP 06401-147
Tel: +55-11-4689-3000 / Fax: +55-11-4689-3016

Europe

Europe FA Center

Mitsubishi Electric Europe B.V. Polish Branch
ul. Krakowska 50, 32-083 Balice, Poland
Tel: +48-12-630-47-00 / Fax: +48-12-630-47-01

Germany FA Center

Mitsubishi Electric Europe B.V. German Branch
Mitsubishi-Electric-Platz 1, 40882 Ratingen, Germany
Tel: +49-2102-486-0 / Fax: +49-2102-486-1120

UK FA Center

Mitsubishi Electric Europe B.V. UK Branch
Travellers Lane, Hatfield, Hertfordshire, AL10 8XB, U.K.
Tel: +44-1707-28-8780 / Fax: +44-1707-27-8695

Italy FA Center

Mitsubishi Electric Europe B.V. Italian Branch
Centro Direzionale Colleoni - Palazzo Sirio, Viale
Colleoni 7, Agrate Brianza (MB), Italy
Tel: +39-039-60531 / Fax: +39-039-6053-312

Czech Republic FA Center

Mitsubishi Electric Europe B.V. Czech Branch
Avenir Business Park, Radlicka 751/113e, 158 00
Praha5, Czech Republic
Tel: +420-251-551-470 / Fax: +420-251-551-471

Russia FA Center

Mitsubishi Electric (Russia) LLC
St. Petersburg Branch
Piskarevsky pr. 2, bld 2, lit "Sch", BC "Benua",
office 720; 195027, St. Petersburg, Russia
Tel: +7-812-633-3497 / Fax: +7-812-633-3499

Turkey FA Center

Mitsubishi Electric Turkey A.S. Umraniye Branch
Serifali Mahallesi Nutuk Sokak No:5, TR-34775
Umraniye / Istanbul, Turkey
Tel: +90-216-526-3990 / Fax: +90-216-526-3995

Trademarks and registered trademarks

MELDAS, MELSEC, iQ Platform, MELSOFT, GOT, CC-Link, CC-Link/LT, CC-Link IE are either trademarks or registered trademarks of Mitsubishi Electric Corporation in Japan and other countries.

ETHERNET is a registered trademark of Xerox Corp.

SD and SDHC Logos are registered trademarks or trademarks of SD-3C, LLC.

VNC is a registered trademark of RealVNC Ltd. in the United States and other countries.

PictBridge is a registered trademark of Canon Inc.

Android and Google Chrome are trademarks or registered trademarks of Google Inc.

Safari is a trademark of Apple Inc., registered in the U.S. and other countries.

Other product and company names are either trademarks or registered trademarks of their respective owners.

The actual color may differ slightly from the pictures in this catalog.

The actual display may differ from what are shown on GOT screen images.

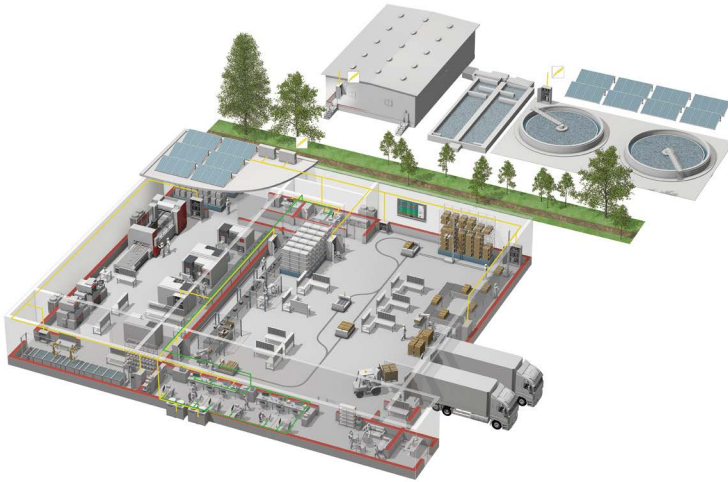
Precautions before use

This publication explains the typical features and functions of the products herein and does not provide restrictions or other information related to usage and module combinations. Before using the products, always read the product user manuals. Mitsubishi Electric will not be held liable for damage caused by factors found not to be the cause of Mitsubishi Electric; opportunity loss or lost profits caused by faults in Mitsubishi Electric products; damage, secondary damage, or accident compensation, whether foreseeable or not, caused by special factors; damage to products other than Mitsubishi Electric products; or any other duties.

For safe use

- To use the products given in this publication properly, always read the relevant manuals before beginning operation.
- The products have been manufactured as general-purpose parts for general industries, and are not designed or manufactured to be incorporated in a device or system used in purposes related to human life.
- Before using the products for special purposes such as nuclear power, electric power, aerospace, medicine or passenger-carrying vehicles, consult with Mitsubishi Electric.
- The products have been manufactured under strict quality control. However, when installing the products where major accidents or losses could occur if the products fail, install appropriate backup or fail-safe functions in the system.

YOUR SOLUTION PARTNER



Mitsubishi Electric offers a wide range of automation equipment from PLCs and HMIs to CNC and EDM machines.

A NAME TO TRUST

Since its beginnings in 1870, some 45 companies use the Mitsubishi name, covering a spectrum of finance, commerce and industry.

The Mitsubishi brand name is recognized around the world as a symbol of premium quality.

Mitsubishi Electric Corporation is active in space development, transportation, semi-conductors, energy systems, communications and information processing, audio visual equipment and home electronics, building and energy management and automation systems, and has 237 factories and laboratories worldwide in over 121 countries.

This is why you can rely on Mitsubishi Electric automation solution - because we know first hand about the need for reliable, efficient, easy-to-use automation and control in our own factories.

As one of the world's leading companies with a global turnover of over 4 trillion Yen (over \$40 billion), employing over 100,000 people, Mitsubishi Electric has the resource and the commitment to deliver the ultimate in service and support as well as the best products.



Low voltage: MCCB, MCB, ACB



Medium voltage: VCB, VCC



Power monitoring, energy management



Compact and Modular Controllers



Inverters, Servos and Motors



Visualisation: HMIs



Numerical Control (NC)



Robots: SCARA, Articulated arm



Processing machines: EDM, Lasers, IDS



Transformers, Air conditioning, Photovoltaic systems

* Not all products are available in all countries.

Global Partner. Local Friend.

GOT2000 *Rugged* Graphic Operation Terminal

mitsubishi ELECTRIC CORPORATION

HEAD OFFICE: TOKYO BLDG., 2-7-3, MARUNOUCHI, CHIYODA-KU, TOKYO 100-8310, JAPAN
NAGOYA WORKS: 1-14, YADA-MINAMI 5, HIGASHI-KU, NAGOYA, JAPAN

Country/Region	Sales office
USA	+1-847-478-2100
Mexico	+52-55-3067-7511
Brazil	+55-11-4689-3000
China	+86-21-2322-3030
Taiwan	+886-2-2299-2499
Korea	+82-2-3660-9530

Singapore	+65-6473-2308
Thailand	+66-2682-6522 to 31
Indonesia	+62-21-3192-6461
Vietnam	+84-8-3910-5945
India	+91-20-2710-2000
Australia	+61-2-9684-7777

Germany	+49-2102-486-0
UK	+44-1707-28-8780
Italy	+39-039-60531
Spain	+34-935-65-3131
France	+33-1-55-68-55-68
Czech	+420-251-551-470

Turkey	+90-216-526-3990
Poland	+48-12-347-65-00
Russia	+7-812-633-3497
South Africa	+27-11-658-8100