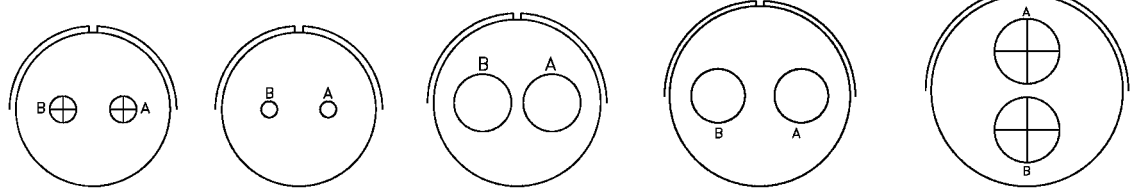
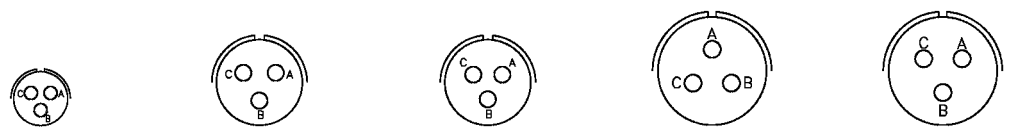


Contact arrangement

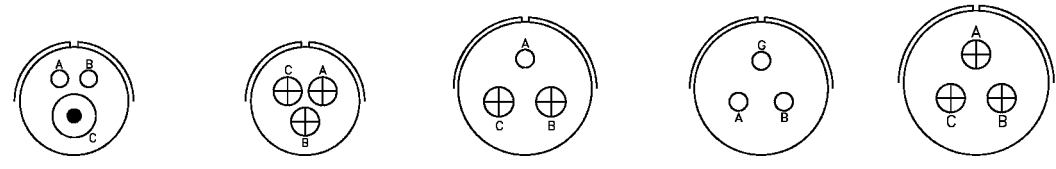


| | | | | | |
|----------------|------|-------|------|------|------|
| ARRANGEMENT | 22-8 | 22-11 | 24-9 | 28-7 | 32-5 |
| CONTACT SIZE | 12 | 16 | 4 | 4 | 0 |
| SERVICE RATING | E | B | A | D | D |

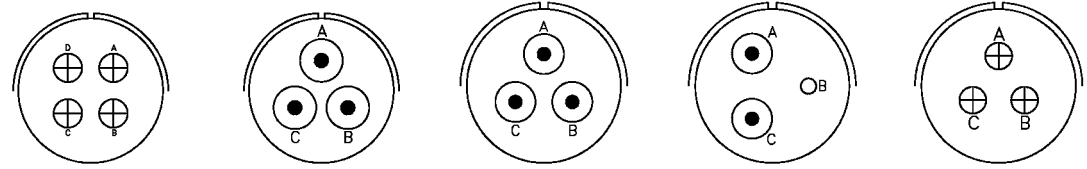
3 CONTACTS



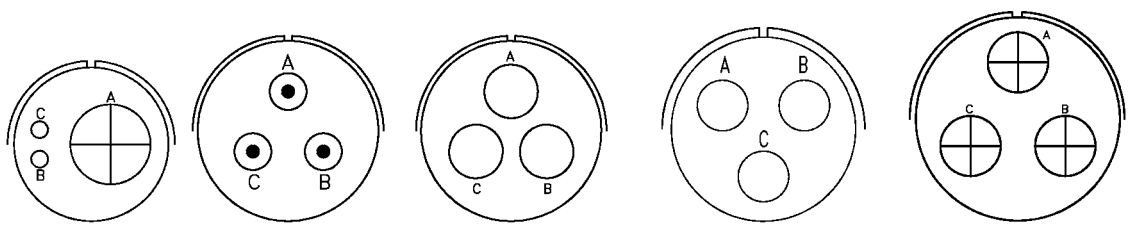
| | | | | | |
|----------------|--------|-------|-------|-------|-------|
| ARRANGEMENT | 10SL-3 | 14S-1 | 14S-7 | 16S-5 | 16S-6 |
| CONTACT SIZE | 16 | 16 | 16 | 16 | 16 |
| SERVICE RATING | A | A | A | A | A |



| | | | | | |
|----------------|------------|-------|-------------|-------|------|
| ARRANGEMENT | 16-7 | 16-10 | 18-5 | 18-22 | 20-3 |
| CONTACT SIZE | 1/8 , 2/16 | 12 | 2/12 , 1/16 | 16 | 12 |
| SERVICE RATING | A | A | D | D | D |

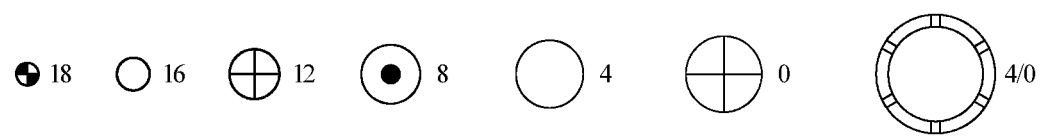


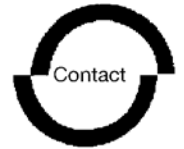
| | | | | | |
|----------------|------|-------|------|--------------|------|
| ARRANGEMENT | 20-6 | 20-19 | 22-2 | 22-6 | 22-9 |
| CONTACT SIZE | 16 | 8 | 8 | 2/8 , 1 / 16 | 12 |
| SERVICE RATING | D | A | D | D | E |



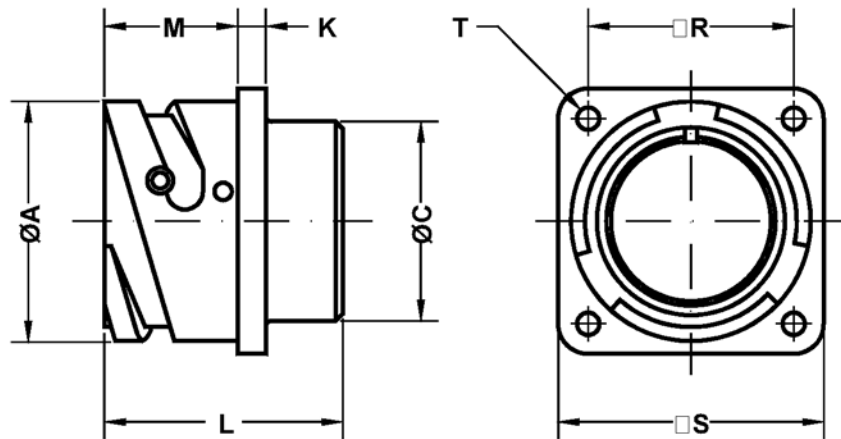
| | | | | | |
|----------------|------------|------|------|-------|-------------|
| ARRANGEMENT | 22-21 | 28-3 | 28-6 | 32-A3 | 36-4 |
| CONTACT SIZE | 1/0 , 2/16 | 8 | 4 | 4 | 0 |
| SERVICE RATING | A | E | D | E | A=D ; B,C=A |

CONTACT LEGEND



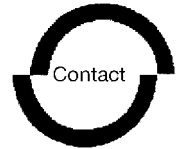


CM1 3102 A / CM1 3102 E / CM1 3102 R
CM1 4102 A / CM1 4102 E / CM1 4102 R
Box mounting receptacle



| Shell size | $\varnothing A$ +0 -0.1 | $\varnothing C$ Max. | K ± 0.2 | L Max. | M +0.2 -0 | R ± 0.1 | S +0.2 | $\varnothing T$ +0.1 -0 |
|------------|-------------------------------|-------------------------|----------------|-----------|-----------------|----------------|-----------|-------------------------------|
| 10 SL | 18.2 | 16.2 | 2.8 | 24.7 | 14.3 | 18.25 | 25.4 | 3.2 |
| 14 S | 24.5 | 19.2 | 3.3 | 24.7 | 14.5 | 23.00 | 30.4 | 3.2 |
| 16 S | 27.2 | 22.4 | 3.3 | 24.7 | 14.5 | 24.60 | 32.5 | 3.2 |
| 16 | 27.2 | 22.4 | 3.3 | 33.8 | 19.1 | 24.60 | 32.5 | 3.2 |
| 18 | 30.7 | 25.6 | 4.0 | 34.5 | 19.1 | 27.00 | 35.0 | 3.2 |
| 20 | 34.0 | 29.0 | 4.0 | 34.5 | 19.1 | 29.40 | 38.0 | 3.2 |
| 22 | 37.3 | 32.2 | 4.0 | 34.5 | 19.6 | 31.75 | 41.0 | 3.2 |
| 24 | 40.9 | 35.3 | 4.0 | 35.7 | 20.6 | 34.90 | 44.5 | 3.7 |
| 28 | 46.7 | 41.4 | 4.0 | 35.7 | 20.7 | 39.70 | 50.9 | 3.7 |
| 32 | 53.4 | 47.8 | 4.0 | 37.3 | 22.3 | 44.45 | 57.0 | 4.3 |
| 36 | 59.6 | 54.1 | 4.0 | 37.3 | 22.3 | 49.20 | 63.5 | 4.3 |
| 40 | 65.5 | 59.0 | 4.0 | 37.3 | 22.3 | 55.55 | 69.9 | 4.3 |

Box mounting square flange receptacle.
 Class A: for general use,
 Class E, R: for environmental sealing.



HOW TO ORDER

| | | | | | | | | |
|-----------|------------|-----------|-----------|----------|--------------|----------|----------|--------------|
| <u>FR</u> | <u>CM1</u> | <u>31</u> | <u>06</u> | <u>A</u> | <u>20-27</u> | <u>P</u> | <u>X</u> | <u>(...)</u> |
| <i>1</i> | <i>2</i> | <i>3</i> | <i>4</i> | <i>5</i> | <i>6</i> | <i>7</i> | <i>8</i> | <i>9</i> |

- 1* Omitted : Standard
FR : Fire Resistant rubber
- 2* CM1 : Bayonet coupling
*CM4 : Bayonet coupling without stainless steel wear pins
- 3* 31 : Solder contacts
41 : Crimp contacts
- 4* Style : 00 - 01 - 02 - 03 - 030 - 05 - 06 - 07 - 070 - 078 - 08 - 26
- 5* Class : A - F - G - GR - RS - SP - Y
- 6* Contact arrangement
- 7* P : Pin contacts
S : Socket contacts
P/S : Contacts for 02PP connectors
- 8* W - X - Y - Z : Alternate positions of the inserts
- 9* Modifications (see the next page)

* Only for receptacles



Technical characteristics

Metal parts

Aluminium alloy with Cadmium free surface coatings with an olive drab passivation .

Contacts

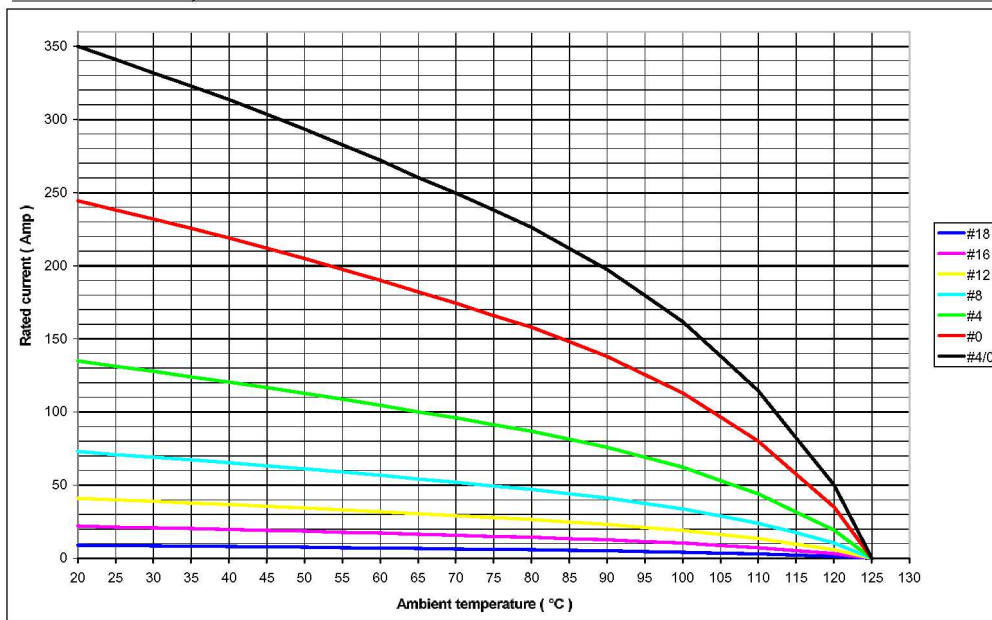
The following contact types are available : copper alloy with silver plating (Std) or gold plating (available on request).

Insulating parts

High insulation synthetic rubber resistant to oils and high range of temperatures (-55°C to +125°C) in accordance with MIL-R-3065. Are also available in fire resistant and halogen free materials.

Contacts

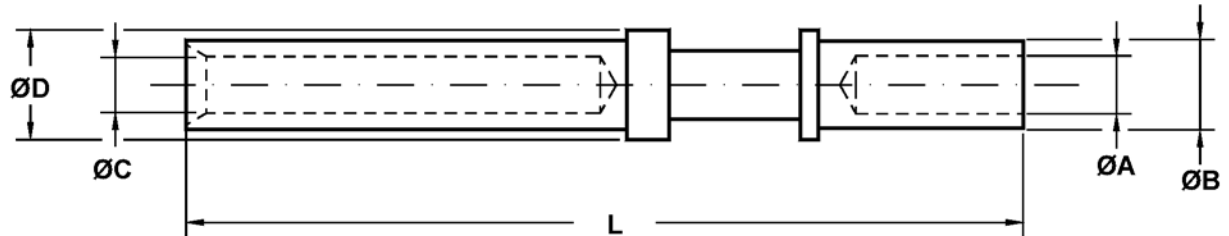
| Contact size | Rated current at 20°C | Max. Contact resist. | Wire size |
|--------------|-----------------------|----------------------|-----------|
| 18 | 7.5 A | 12.0 mΩ | 20+26 AWG |
| 16 | 22 A | 6.0 mΩ | 16+22 AWG |
| 12 | 41 A | 3.0 mΩ | 12-14 AWG |
| 8 | 73 A | 1.0 mΩ | 8-10 AWG |
| 4 | 135 A | 0.5 mΩ | 4-6 AWG |
| 0 | 245 A | 0.3 mΩ | 0+2 AWG |
| 4/0 | 350 A | 0.2 mΩ | 4/0 AWG |



Service rating (Min insulating resistance : $\geq 5 \times 10^3 \text{ M}\Omega$)

| Class | Operating voltage Vdc | Operating voltage VacRMS | Test voltage Vac RMS |
|-------|-----------------------|--------------------------|----------------------|
| INST. | 250 V | 200 V | 1000 V |
| A | 700 V | 500 V | 2000 V |
| D | 1250 V | 900 V | 2800 V |
| E | 1750 V | 1250 V | 3500 V |
| B | 2450 V | 1750 V | 4500 V |
| C | 4200 V | 3000 V | 7000 V |

Socket contacts



| Contact P/N | Size | mm ² | AWG | A +0.1 -0 | B +0 -0.1 | C +0.05 -0 | D +0 -0.1 | L ±0.1 |
|------------------|------|-----------------|---------|-----------------|-----------------|------------------|-----------------|-----------|
| CM - 40588 | 18 | 0.15 / 0.6 | 26 / 20 | 1.30 | 1.93 | 1.48 | 2.2 | 34.40 |
| CM - 40552 | 16S | 1 / 1.5 | 18 / 16 | 1.70 | 2.60 | 1.65 | 3.2 | 26.65 |
| CM - 40552 - 12 | 16S | 0.6 | 20 | 1.20 | 2.60 | 1.65 | 3.2 | 26.65 |
| CM - 40552 - 13 | 16S | 0.15 / 0.6 | 26 / 20 | 1.30 | 1.93 | 1.65 | 3.2 | 26.65 |
| CM - 40552 - 15 | 16S | 1 | 18 | 1.50 | 2.60 | 1.65 | 3.2 | 26.65 |
| CM - 40552 - 20 | 16S | 2 | 14 | 2.00 | 2.90 | 1.65 | 3.2 | 26.65 |
| CM - 40552 - 26 | 16S | 3 | 12 | 2.50 | 3.80 | 1.65 | 3.2 | 26.65 |
| CM - 40556 | 16 | 1 / 1.5 | 18 / 16 | 1.70 | 2.60 | 1.65 | 3.2 | 36.50 |
| CM - 40556 - 08 | 16 | 0.15 / 0.2 | 26 / 24 | 0.85 | 1.55 | 1.65 | 3.2 | 36.50 |
| CM - 40556 - 12 | 16 | 0.6 | 20 | 1.20 | 2.60 | 1.65 | 3.2 | 36.50 |
| CM - 40556 - 13 | 16 | 0.15 / 0.6 | 26 / 20 | 1.30 | 1.93 | 1.65 | 3.2 | 36.50 |
| CM - 40556 - 15 | 16 | 1 | 18 | 1.50 | 2.60 | 1.65 | 3.2 | 36.50 |
| CM - 40556 - 20 | 16 | 2 | 14 | 2.00 | 2.90 | 1.65 | 3.2 | 36.50 |
| CM - 40556 - 26 | 16 | 3 | 12 | 2.50 | 3.80 | 1.65 | 3.2 | 36.50 |
| CM - 40556 - 32 | 16 | | 32 / 28 | 0.45 | 1.95 | 1.65 | 3.2 | 36.50 |
| CM - 40560 | 12 | 3 | 12 | 2.50 | 3.90 | 2.48 | 4.8 | 37.65 |
| CM - 40560 - 12 | 12 | 0.6 | 20 | 1.20 | 2.60 | 2.48 | 4.8 | 37.65 |
| CM - 40560 - 15 | 12 | 1 | 18 | 1.50 | 3.40 | 2.48 | 4.8 | 37.65 |
| CM - 40560 - 20 | 12 | 1 / 2 | 18 / 14 | 2.00 | 3.80 | 2.48 | 4.8 | 37.65 |
| CM - 40560 - 22 | 12 | 2.5 | | 2.20 | 3.80 | 2.48 | 4.8 | 37.65 |
| CM - 40560 - 30 | 12 | 4 | | 3.00 | 4.80 | 2.48 | 4.8 | 37.65 |
| CM - 40560 - 30M | 12 | 4 | | 3.30 | 4.20 | 2.48 | 4.8 | 37.65 |
| CM - 40560 - 38 | 12 | 6 | | 3.60 | 4.80 | 2.48 | 4.8 | 37.65 |
| CM - 40793 | 8 | 6 / 8 | 8 | 4.50 | 6.90 | 3.73 | 7.8 | 42.00 |
| CM - 40793 - 50 | 8 | 10 | | 5.00 | 6.90 | 3.73 | 7.8 | 42.00 |
| CM - 113474 - 4S | 4 | 22 | 4 | 7.15 | 9.53 | 5.84 | 11.0 | 42.00 |
| CM - 113474 - 1S | 0 | 50 / 60 | 0 | 11.50 | 14.30 | 9.20 | 15.1 | 45.00 |
| CM - 113474 - 0S | 4/0 | 107 | 4/0 | 16.50 | 20.00 | 12.70 | 20.0 | 65.50 |

Please consult our sales department for other contacts or crimp tooling details .