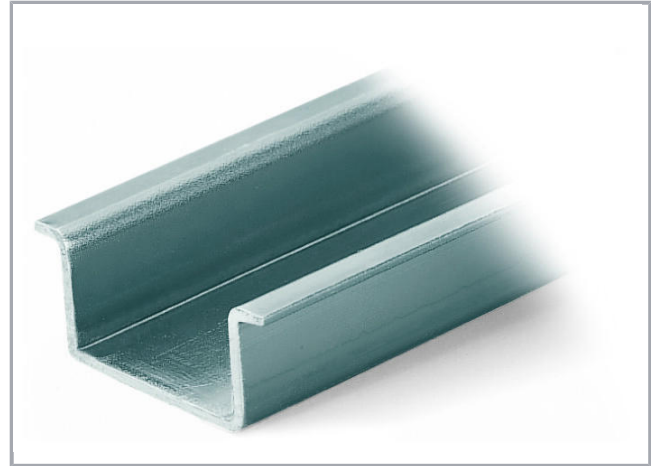
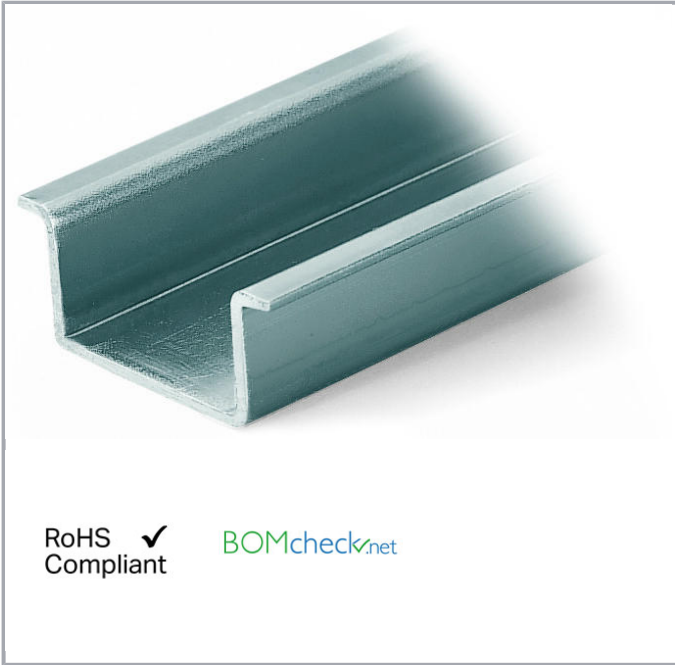


**Data sheet | Item number: 210-114**

Steel carrier rail; 35 x 15 mm; 1.5 mm thick; 2 m long; unslotted; similar to EN 60715

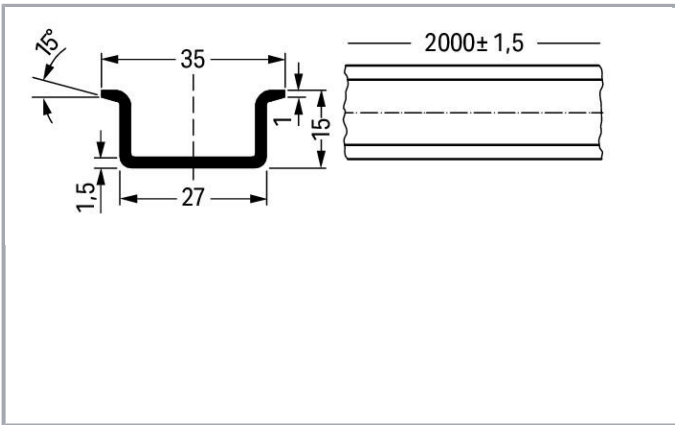


[www.wago.com/210-114](http://www.wago.com/210-114)



RoHS   
Compliant

[BOMcheck.net](https://www.bomcheck.net)



**Data**

**Technical Data**

Main product function

Mounting Accessories

Subject to changes. Please also observe the further product documentation!

WAGO Kontakttechnik GmbH & Co. KG  
Hansastr. 27  
32423 Minden  
Phone: +49571 887-0 | Fax: +49571 887-169  
Email: [info.de@wago.com](mailto:info.de@wago.com) | Web: [www.wago.com](http://www.wago.com)

Do you have any questions about our products?  
We are always happy to take your call at {0}.

## Geometrical Data

Width	2000 mm / 78.74 inch
Height	15 mm / 0.591 inch
Depth	35 mm / 1.378 inch

## Material Data

Weight	1325 g
--------	--------





## Commercial data

Product Group	2 (Terminal Block Accessories)
Packaging type	BOX
Country of origin	IT
GTIN	4017332277174
Customs tariff number	72169180000

## Counterpart

## Compatible products

### assembling

	<b>Item no.: 209-137</b> Mounting adapter; can be used as end plate; 6.5 mm wide; gray	<a href="http://www.wago.com/209-137">www.wago.com/209-137</a>
	<b>Item no.: 249-116</b> Screwless end stop; 6 mm wide; for DIN-rail 35 x 15 and 35 x 7.5; gray	<a href="http://www.wago.com/249-116">www.wago.com/249-116</a>
	<b>Item no.: 249-117</b> Screwless end stop; 10 mm wide; for DIN-rail 35 x 15 and 35 x 7.5; gray	<a href="http://www.wago.com/249-117">www.wago.com/249-117</a>
	<b>Item no.: 249-197</b> Screwless end stop; 14 mm wide; for DIN-rail 35 x 15 and 35 x 7.5; gray	<a href="http://www.wago.com/249-197">www.wago.com/249-197</a>

### Marking accessories

	<b>Item no.: 210-708</b> Labels; for TP printers; 9.5 x 25 mm; white	<a href="http://www.wago.com/210-708">www.wago.com/210-708</a>
	<b>Item no.: 210-808</b> Labels; for Smart Printer; 9.5 x 25 mm; white	<a href="http://www.wago.com/210-808">www.wago.com/210-808</a>

Subject to changes. Please also observe the further product documentation!



## Downloads

### CAD/CAE-Data

#### CAD data

2D/3D Models 210-114	<a href="#">URL</a>	<a href="#">Download</a>
----------------------	---------------------	--------------------------

#### CAE data

WSCAD Universe 210-114	<a href="#">URL</a>	<a href="#">Download</a>
------------------------	---------------------	--------------------------

## Handling Instructions

DIN-Rail	Item No.	Current [A]	Acc. to mm <sup>2</sup> /AWG Cu
DIN 35 x 7.5 (steel)			
slotted	210-112	76	16/6
unslotted	210-113	76	16/6
DIN 35 x 15 (steel)			
1.5 mm thick	210-114	125	35/2
2.3 mm thick	210-118	125	35/2
DIN 35 x 7.5 (Al)			
unslotted	210-196	76	16/6
DIN 35 x 15 (Cu)			
2.3 mm thick	210-198	309	150/6/0
Current applies to rails of 1 m/3'3" length			

When using standard carrier rails as ground conductor busbars, please refer to the maximum current capacities listed above.

Steel carrier rails are not suited for PEN (ground and N-conductor) applications per EN 60947-7-2 (VDE 0611, Part 3).

Subject to changes. Please also observe the further product documentation!

WAGO Kontakttechnik GmbH & Co. KG  
Hansastr. 27  
32423 Minden  
Phone: +49571 887-0 | Fax: +49571 887-169  
Email: [info.de@wago.com](mailto:info.de@wago.com) | Web: [www.wago.com](http://www.wago.com)

Do you have any questions about our products?  
We are always happy to take your call at {0}.