

## Adapters

### SMB Male to SMA Female Adapter

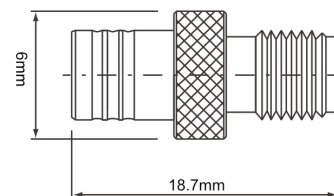


#### General Description

The SMB Male to SMA Female adapters facilitate RF cable extensions or changes of connector types.

The nickel plated finish aids in protection against environmental corrosion to the base materials.

Gold plated contacts reduce insertion loss between mated parts providing high conductivity.

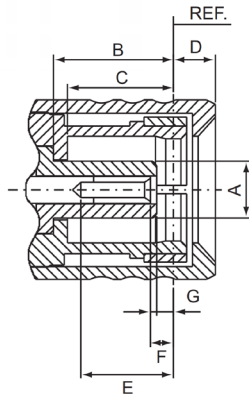


## Adapters

### SMB Male to SMA Female Adapter

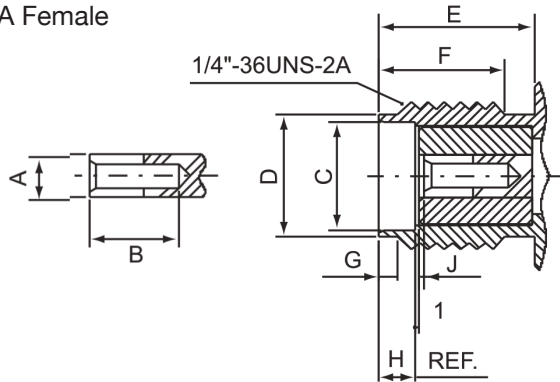
#### Interface Specification

SMB Male



	Min	Max
A	-	2.06mm
B	3.58mm	-
C	3.58mm	-
D	-	1.63mm
E	2.97mm	-
F	0.18mm	0.94mm
G	0.18mm	-

SMA Female



	Min	Max
A	1.24mm	1.29mm
B	2.67mm	-
C	5.28mm	5.49mm
D	4.59mm	4.67mm
E	5.54mm	-
F	4.32mm	-
G	0.38mm	1.14mm
H	1.88mm	1.98mm
1	-	0.25mm
J	-	0.18mm

#### Ordering Details

Part Number Description

ADAPT/SMBM/SMAF RF ADAPTOR - SMB MALE TO SMA FEMALE