

FEATURES AND SPECIFICATIONS

Features and Benefits

- Sizes 3 to 30 circuits
- Staggered solder tails, 3.50mm (.138") long
- 5597 accommodates FFC/FPC 0.30mm (.012") thick

Reference Information

Packaging: Tray
 UL File No.: E29179
 Designed In: Millimeters

Electrical

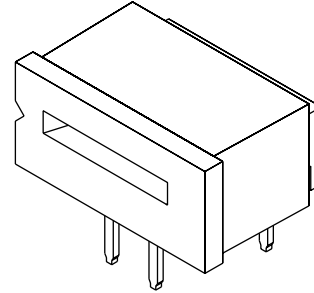
Voltage: 200V
 Current: 1.0A
 Contact Resistance: 20mΩ max.
 Dielectric Withstanding Voltage: 500V AC/1 min.
 Insulation Resistance: 500 MΩ min.

Physical

Housing: PBTP, UL 94V-0
 Actuator: PBTP, UL 94V-0
 Contact: Phosphor Bronze
 Plating: Tin
 Operating Temperature: -20 to +80°C

molex® 1.25mm (.049") Pitch FFC/FPC Connector

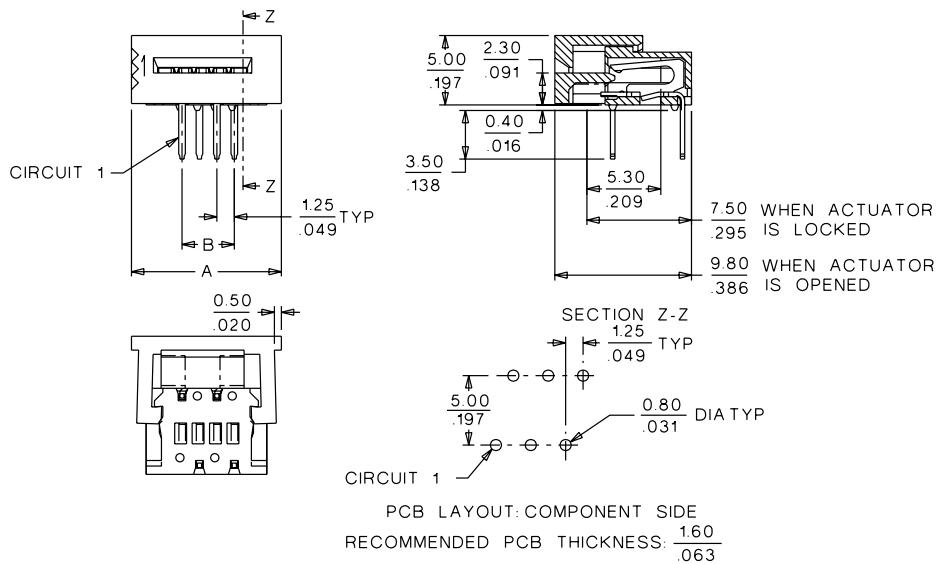
5597-NAPB Right Angle, ZIF



FFC/FPC Connectors



CATALOG DRAWING (FOR REFERENCE ONLY)



ORDERING INFORMATION AND DIMENSIONS

Circuits	Order No.	Dimension		Circuits	Order No.	Dimension	
		A	B			A	B
3	39-51-3033	9.50 (.374)	2.50 (.098)	17	39-51-3173	27.00 (1.063)	20.00 (.787)
4	39-51-3043	10.75 (.423)	3.75 (.147)	18	39-51-3183	28.25 (1.112)	21.25 (.836)
5	39-51-3053	12.00 (.472)	5.00 (.196)	19	39-51-3193	29.50 (1.161)	22.50 (.885)
6	39-51-3063	13.25 (.522)	6.25 (.246)	20	39-51-3203	30.75 (1.211)	23.75 (.935)
7	39-51-3073	14.50 (.571)	7.50 (.295)	21	39-51-3213	32.00 (1.260)	25.00 (.984)
8	39-51-3083	15.75 (.620)	8.75 (.344)	22	39-51-3223	33.25 (1.309)	26.25 (1.033)
9	39-51-3093	17.00 (.669)	10.00 (.393)	23	39-51-3233	34.50 (1.358)	27.50 (1.082)
10	39-51-3103	18.25 (.719)	11.25 (.442)	24	39-51-3243	35.75 (1.407)	28.75 (1.131)
11	39-51-3113	19.50 (.768)	12.50 (.492)	25	39-51-3253	37.00 (1.475)	30.00 (1.181)
12	39-51-3123	20.75 (.817)	13.75 (.541)	26	39-51-3263	38.25 (1.506)	31.25 (1.230)
13	39-51-3133	22.00 (.866)	15.00 (.590)	27	39-51-3273	39.50 (1.555)	32.50 (1.279)
14	39-51-3143	23.25 (.915)	16.25 (.639)	28	39-51-3283	40.75 (1.604)	33.75 (1.328)
15	39-51-3153	24.50 (.965)	17.50 (.688)	29	39-51-3293	42.00 (1.654)	35.00 (1.377)
16	39-51-3163	25.75 (1.014)	18.75 (.738)	30	39-51-3303	43.25 (1.703)	36.25 (1.427)

Note: For cable specification dimensions, see cable pages at end of section