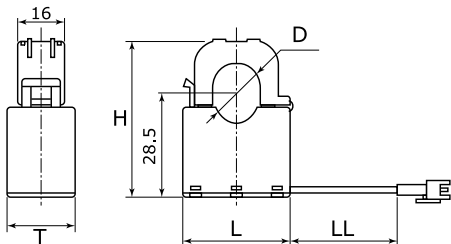


**KEMET Part Number: C/CT-1216**  
(USEX1216000000)

KEMET, C/CT-1216, Current, Round - Snap-on, AC, High Performance, Compact, Slim, Flame Retardant



Dimensions	
D	16mm
L	36.7mm
H	43mm
T	23mm
LL	140mm

Packaging Specifications	
Packaging:	Tray
Packaging Quantity:	108
Weight:	63.3 g

General Information	
Series:	C/CT-1216
Type:	Current
Style:	Round - Snap-on
Description:	High Alternating Current Sensor
Features:	High Performance, Compact, Slim, Flame Retardant
Lead:	Cable Connector
RoHS:	Yes

Specifications	
Temperature Range:	-10/+60°C
Voltage DC:	400 mV (Output, +/- 20 mV), 7.5 V (Output Protection)
Insulation Resistance:	100 MOhms (At 500 VDC, between core and terminal)
Current:	120 Amps (50Hz/60Hz)
Miscellaneous:	Current Transformation Ratio = 3,000. Insulation Resistance = 500 VDC To 100 MOhms. Storage Temperature = -20/+75C.