

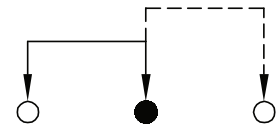
Right Angle Slide Switch multicomp^{PRO}

RoHS
Compliant

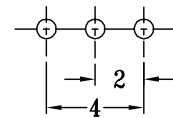
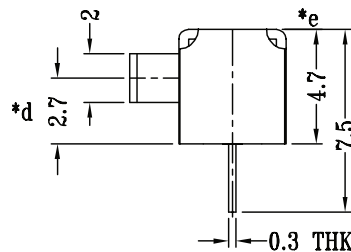
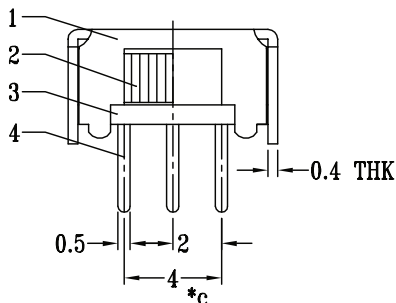
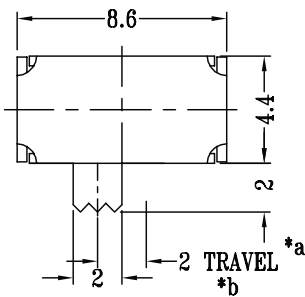
Specification

Rating : DC 50V 0.3A
 Function : 1P2T
 Timing : Non-Shorting

Parts	Materials	Quantity	Finish
Frame	Steel Strip	1	Ni Plated
Knob	PA66	1	Black
Base	Phenolic Resin	1	Natural
Terminal	Brass Strip	3	Ag Plated
Contact Clip	PBS Strip	1	Ag Clad
Spring Plate	PBS Strip	1	Natural



SCHEMATIC (NON-SHORTING)



P.C.B. LAYOUT
BOTTOM VIEW

Dimensions : Millimetres

Tolerance: Unless Specified within 1.5mm ± 0.1 mm over 1.5mm ± 0.2 mm

Newark.com/multicomp-pro
 Farnell.com/multicomp-pro
 Element14.com/multicomp-pro

multicomp^{PRO}

Right Angle Slide Switch **multicomp** PRO

Electrical Characteristics

Item	Test Conditions	Performance
Contact Resistance	Measured at 1kHz small current (100mA or less)	100m Ω max. 100
Insulation Resistance	Apply a voltage of 500V DC for 1 min. to following portions after which measurement shall be made. (1) Between body and terminal. (2) Between terminals.	100M Ω Min.
Dielectric Strength	AC 500V rms (50Hz to 60Hz) for 1 min. trip Current: 0.5mA (1) Between Terminals. (2) Between Individual terminal and frame.	Without Damage to parts Arcing or Breakdown etc

Mechanical Characteristics

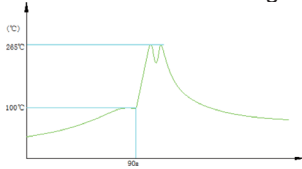
Item	Test Conditions	Performance
Operating Force	Measurement shall be made at the nearest point of the component or at the point 3mm from the tip of the actuator (Knob).	250gf \pm 100gf
Terminal Strength	A Static load of (300gf) shall be applied to the terminal for 15 sec, in any direction.	Mechanical and Electrical characteristics shall be satisfied without looseness of actuator.
Displacement of actuator (Knob)	A static load of 10N (1Kgf) shall be applied to the top of the actuator (Knob) and then displacement shall be measured to the direction of the arrow.	The lever shall have no serious deformation and function is normally.

Endurance Characteristics

Item	Test Conditions	Performance
Life test	Without Load: An Actuator shall be subject to 10,000 cycles at a speed of 15 to 18 cycles for 1 Min.	(1) Contact Resistance 200m Ω Max. (2) Insulation Resistance 50M Ω Min. (3) Withstand voltage AC500V, 1 minute. (4) Operating Force \pm 30% initial value. (5) Without damage to parts arcing or breakdown etc.
Solderability test	The top of the terminals shall be dipped 2mm in the solder bath of 240 \pm 5 $^{\circ}$ C for 3 \pm 0.5 seconds.	The area of soldering should be over 95%

Right Angle Slide Switch **multicomp**PRO

Endurance Characteristics

Item	Test Conditions	Performance						
Resistance E to Soldering heat test	(1) Hand welding: 380°C max. 3sec. max. (2) Temperature curve and parameter requirement of wave soldering 	There shall be no deformation or cracks in molded part.						
	<table border="1"> <tr> <td>20°C to 100°C</td> <td>20°C to 120°C</td> <td>-150°C</td> <td>255°C to 265°C</td> </tr> <tr> <td>90s ±5</td> <td><3°C/s</td> <td><4°C/s</td> <td>3s to 5s</td> </tr> </table>		20°C to 100°C	20°C to 120°C	-150°C	255°C to 265°C	90s ±5	<3°C/s
20°C to 100°C	20°C to 120°C	-150°C	255°C to 265°C					
90s ±5	<3°C/s	<4°C/s	3s to 5s					
Cold Test	The Switch shall be stored at a temperature of -25 ±3°C for 96 hours. Then the switch shall be maintained at standard atmospheric conditions for 1 hour after which measurement shall be made.							
Heat Test	The Switch shall be stored at a temperature of 70 ±2°C for 96 hours. Then the switch shall be maintained at standard atmospheric conditions for 1 hour after which measurement shall be made.	There shall be no deformation or cracks in molded part,						
Humidity Test	The Switch shall be stored at a temperature of 40 ±2°C and a humidity of 90% to 95% for 96 hours. Then the switch shall be maintained at standard atmospheric conditions for 1 hour after which measurement shall be made.							
Standard Atmosphere Conditions	Unless Otherwise specified. the standard range of atmosphere conditions for making measurements and tests are as follows. (1) Ambient temperature: 5°C to 35°C (2) Relative Humidity: 45% to 85% (3) AIT Pressure: 86Kpa to 106Kpa							
Practical temperature range	-40°C to +85°C.							

Part Number Table

Description	Part Number
Slide Switch, SPDT, 50V DC, 0.3A, R/A Through hole	MP004693

Important Notice : This data sheet and its contents (the "Information") belong to the members of the AVNET group of companies (the "Group") or are licensed to it. No licence is granted for the use of it other than for information purposes in connection with the products to which it relates. No licence of any intellectual property rights is granted. The Information is subject to change without notice and replaces all data sheets previously supplied. The Information supplied is believed to be accurate but the Group assumes no responsibility for its accuracy or completeness, any error in or omission from it or for any use made of it. Users of this data sheet should check for themselves the Information and the suitability of the products for their purpose and not make any assumptions based on information included or omitted. Liability for loss or damage resulting from any reliance on the Information or use of it (including liability resulting from negligence or where the Group was aware of the possibility of such loss or damage arising) is excluded. This will not operate to limit or restrict the Group's liability for death or personal injury resulting from its negligence. Multicomp Pro is the registered trademark of Premier Farnell Limited 2019.