

VIRALERT 3

QUICK START GUIDE

PUBLICATION N° 814238

LANGUAGE: ENGLISH

ISSUE: 1

DATE: 19 JUNE 2020

HUMAN BODY TEMPERATURE SCREENING SYSTEM



LAND
AMETEK®

LANDVIRALERT.COM

Health and Safety Information



Read all of the instructions in this booklet - including all the **WARNINGS** and **CAUTIONS** - **before** using this product. If there is any instruction which you do not understand, **DO NOT USE THE PRODUCT**.

Safety Signs



WARNING

Indicates a potentially hazardous situation which, if not avoided, could result in death or personal injury.



CAUTION

Indicates a potentially hazardous situation which, if not avoided, could result in minor or moderate injury to the user or users, or result in damage to the product or to property.

NOTE

Indicates a potentially hazardous situation which, if not avoided, could result in damage or loss of data.

Signs and Symbols used on equipment and Documentation



Caution, risk of electric shock.



Caution, attention to possibility of risk of damage to the product, process or surroundings. Refer to instruction manual.



Caution, hot surface.



Protective Conductor Terminal.



Observe precautions for handling electrostatic discharge sensitive devices.

Equipment Operation

Use of this instrument in a manner not specified by AMETEK Land may be hazardous. Read **and understand** the user documentation supplied **before** installing and operating the equipment.

The safety of any system incorporating this equipment is the responsibility of the assembler.

Protective Clothing, Face and Eye Protection

It is possible that this equipment is to be installed on, or near to, machinery or equipment operating at high temperatures and high pressures. Suitable protective clothing, along with face and eye protection must be worn. Refer to the health and safety guidelines for the machinery/equipment before installing this product. If in doubt, contact AMETEK Land.



Wear Protective Gloves



Wear Protective Clothing



Wear Eye Protection



Wear Ear Protection



Wear Safety Boots



Wear Face Protection

Electrical Power Supply

Before working on the electrical connections, all of the electrical power lines to the equipment must be isolated. All the electrical cables and signal cables must be connected exactly as indicated in these operating instructions. If in doubt, contact AMETEK Land.

Contact Us

UK - Dronfield

Land Instruments International

Tel: +44 (0) 1246 417691

China

AMETEK Land China Service

Tel: +86 21 5868 5111 ext 122

USA - Pittsburgh

AMETEK Land, Inc.

Tel: +1 412 826 4444

India

AMETEK Land India Service

Tel: +91 - 80 67823240

Email: land.enquiry@ametek.com

Web: www.ametek-land.com

For further details on all AMETEK Land offices, distributors and representatives, please visit our website.

Storage

The instrument should be stored in its packaging, in a dry sheltered area.

The maximum storage temperature is 10°C (18°F) higher than the maximum operating temperature.

The minimum storage temperature is 10°C (18°F) lower than the minimum operating temperature.

Refer to the Technical Specification for details of the operating temperature limits.

Unpacking

Check all packages for external signs of damage. Check the contents against the packing note.

Lifting Instructions

Where items are too heavy to be lifted manually, use suitably rated lifting equipment. Refer to the Technical Specification for weights. All lifting should be carried out in accordance with local and national regulations.

Return of Damaged Goods

IMPORTANT If any item has been damaged in transit, this should be reported to the carrier and to the supplier immediately. Damage caused in transit is the responsibility of the carrier not the supplier.

DO NOT RETURN a damaged instrument to the sender as the carrier will not then consider a claim. Save the packing with the damaged article for inspection by the carrier.

Return of Goods for Repair

If you need to return goods for repair please contact our Customer Service Department for details of the correct returns procedure.

Any item returned to AMETEK Land should be adequately packaged to prevent damage during transit.

You must include a written report of the problem together with your own name and contact information, address, telephone number, email address etc.

Design and Manufacturing Standards

The Quality Management System of Land Instruments International is approved to BS EN ISO 9001 for the design, manufacture and on-site servicing of combustion, environmental monitoring and non-contact temperature measuring instrumentation.

Registered ISO9001 Management System approvals apply in the USA.

UK Calibration Laboratory: UKAS 0034.

USA Calibration Laboratory: ANAB Accredited ISO/IEC 17025.

National Accreditation Board for Testing and Calibration Laboratories approvals apply in India.

Operation of radio transmitters, telephones or other electrical/electronic devices in close proximity to the equipment while the enclosure doors of the instrument or its peripherals are open, may cause interference and possible failure where the radiated emissions exceed the EMC directive.

The protection provided by this product may be invalidated if alterations or additions are made to the structural, electrical, mechanical, pneumatic, software or firmware components of this system. Such changes may also invalidate the standard terms of warranty.

Copyright

This manual is provided as an aid to owners of AMETEK Land's products and contains information proprietary to AMETEK Land. This manual may not, in whole or part, be copied, or reproduced without the expressed written consent of AMETEK Land.

Contents

1	Introduction	1
1.1	About VIRALERT 3	1
1.2	What's in the box?	1
1.3	Optional Accessories	1
2	System Overview	3
3	System Setup	4
3.1	Measurement Location	4
3.2	System Connections	4
4	Start the Software	6
4.1	Network Adapter Settings	6
4.2	Starting the Software	9
	Disclaimer	11

1 INTRODUCTION

This Quick Start Guide gives you information on how to install and set up the AMETEK Land VIRALERT 3 Human Body Temperature Screening System.

1.1 About VIRALERT 3

VIRALERT 3 screens people for elevated temperatures that could indicate fever. The system is intended for use at the entrance to business premises, hospitals, airports, schools, sporting and social gathering venues etc.

1.2 What's in the box?



VIRALERT 3 Camera and Blackbody Reference source

Pre-mounted on a bracket with tripod fixings



Camera to Laptop/PC power and signal cable

With Ethernet and USB connections to the Laptop/PC



Power cable for the Blackbody Reference Source

International mains adaptors included

1.3 Optional Accessories



Laptop PC running VIRALERT 3 software

VIRALERT 3 software is available for download from **www.landviralert.com**



Surface Mount Bracket

Part N° 814266

An adjustable mounting bracket that can be screwed to a wall, ceiling or any other flat surface. Fixings included



Clamp Mount Bracket

Part N° 814267

A mounting bracket with a clamp to connect to a desk or a table



Tripod

Part N° 814268

A tripod for installation on a flat surface

2 SYSTEM OVERVIEW

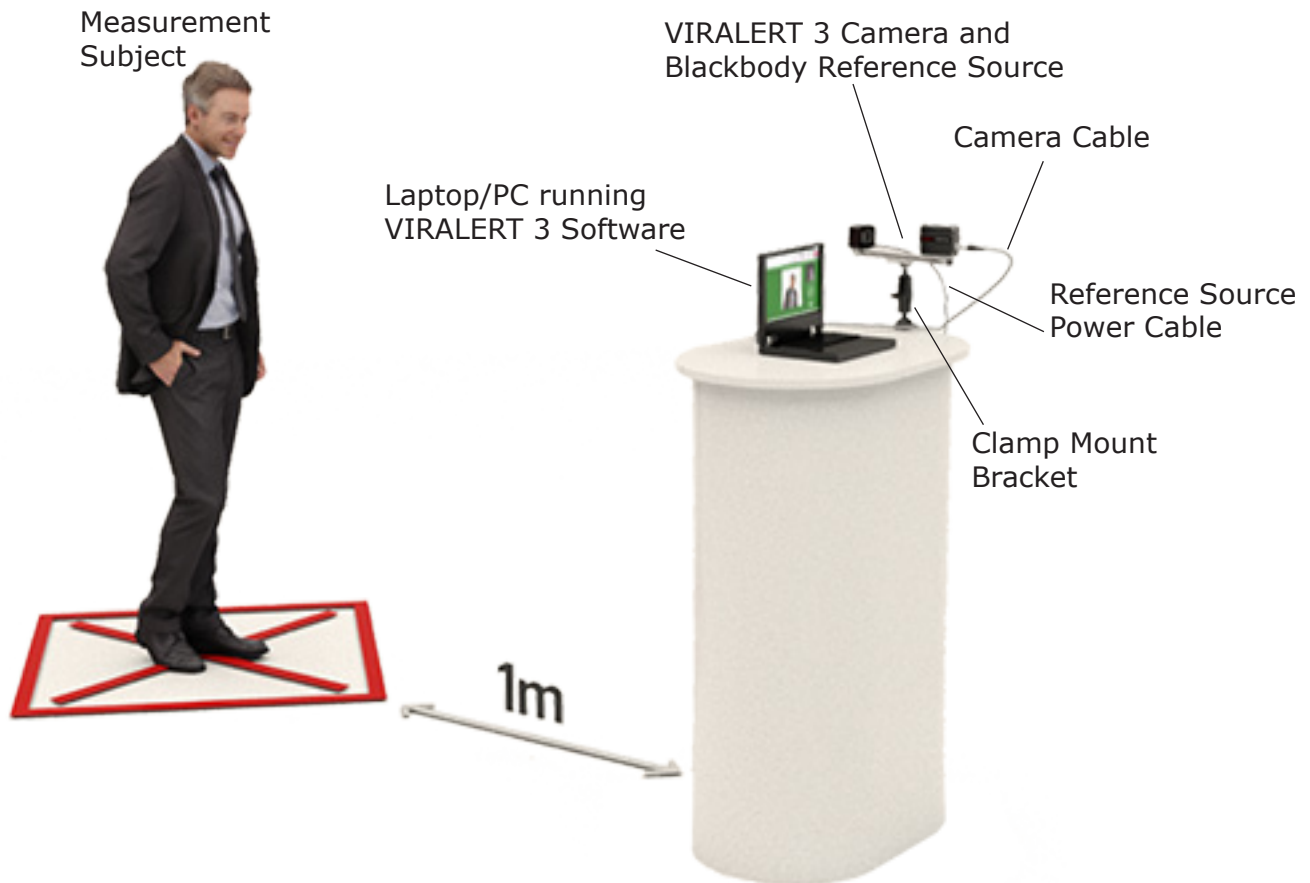


Fig. 2-1 VIRALERT 3 Typical System Overview

3 SYSTEM SETUP

3.1 Measurement Location

- 1) Choose a location near to the entrance of the area you want to protect.
- 2) There must be space to install the Camera and Blackbody Reference Source so that the Measurement Subject can face the Camera from a distance of 1 m/3ft.
- 3) Avoid locations where there are possible heat sources e.g. electrical equipment, radiators etc. in the field of view of the camera.
- 4) Also avoid locations where the camera may pick up reflections from windows, mirrors etc.
- 5) During the temperature measurement process, the Subject will need to stand still in front of the camera for approximately 2 seconds. Make sure there is adequate provision for social distancing in your chosen measurement location.
- 6) The camera must have a clear, unobstructed view of the Subject's face, ideally with the camera at a height around eye level. If necessary, use one of the mounting accessories available from AMETEK Land (see Section 1.3).
- 7) The Blackbody Reference Source requires a mains voltage supply. You will also need to provide power to the Laptop/PC running the VIRALERT 3 software.
- 8) Once the system is installed and operating, use cable ties to secure the cables to suitable structures. This minimises the risk of the cables becoming dislodged and reduces the risk of tripping over the cables.
- 9) Posters which explain the screening process and provide instructions for your staff and visitors on how to use the system are available for download from:
www.landviralert.com

3.2 System Connections

NOTE

If you have purchased a mounting accessory i.e. Surface Mount Bracket, Clamp Mount Bracket, or Tripod from AMETEK Land, then each accessory will come supplied with its own installation instructions.



Camera Connection

Connect the cylindrical connector on the power and signal cable to the Camera

**Laptop/PC Connections**

Connect the Laptop/PC to the mains power supply.

Connect the two connectors on the other end of the power and signal cable to the Laptop/PC.



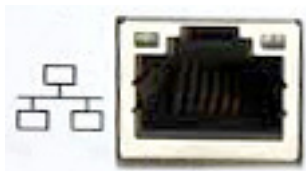
The power (USB) connector on the cable looks like this.



Connect it to a USB socket on the laptop which looks like this.



The Network signal connector on the cable looks like this.



Connect it to a Network socket on the laptop which looks like this.

**Blackbody Reference Source Connection**

Connect the smaller connector of the source power cable to the USB port on the Blackbody Reference Source.

Use the supplied mains adapter to connect the cable to the mains supply.

System connections are now complete

4 START THE SOFTWARE

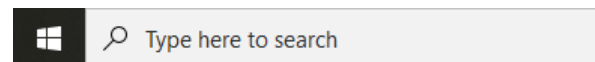
NOTE

If you purchased a Laptop/PC from AMETEK Land with your VIRALERT 3 system, then the Network Adapter Settings will already be configured and the software installed on the computer.

4.1 Network Adapter Settings

If you are using your own Laptop/PC, the correct Network Adapter Settings must be specified so that your PC can communicate with the VIRALERT 3 Camera.

- 1) In the bottom left corner of your computer screen, there is a box which says:



Type here to search.

- 2) In this text box, type in **Network status**.

The Search results will be similar to the screen shown in Fig. 4-1 below.

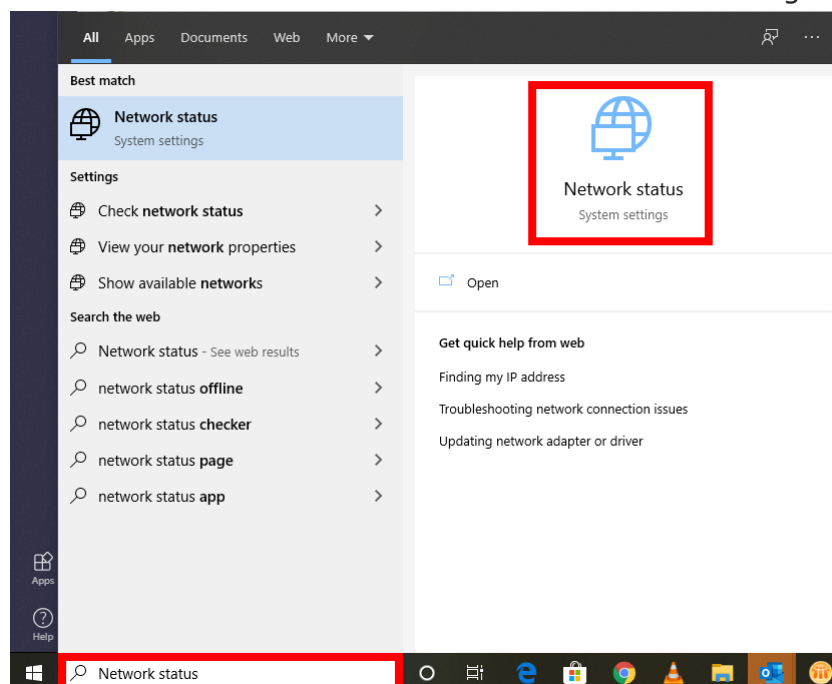
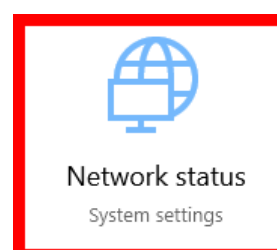


Fig. 4-1 Network status search

- 3) Click on the **Network Status** link.



- The **Status** screen is displayed. See Fig. 4-2 below.
- 4) Click on the **Change adapter options** link.

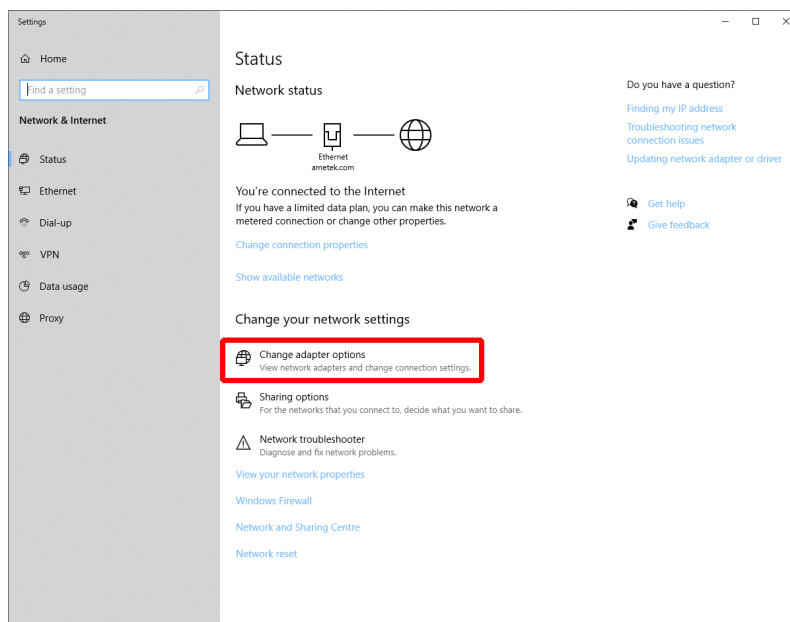


Fig. 4-2 Status screen

- The **Network Connections** screen is displayed. See Fig. 4-3 below.
- 5) Move your mouse cursor over the icon for your Network (Ethernet in the example below).
- 6) Click the right-hand mouse button and select the Properties option.

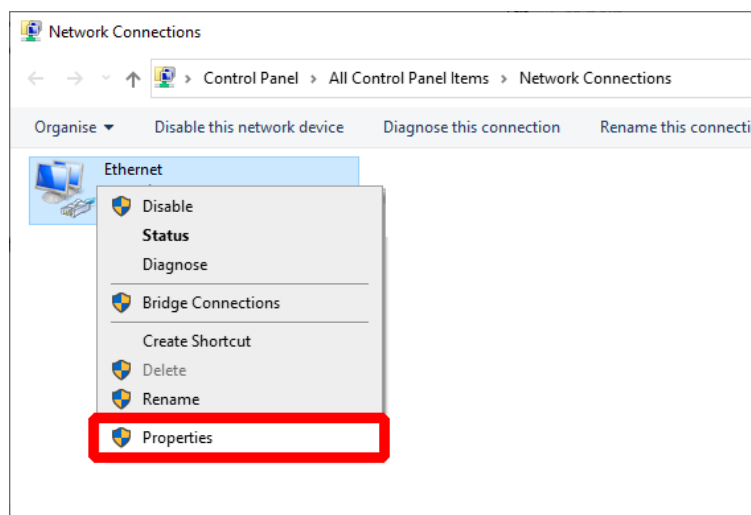


Fig. 4-3 Network Connections screen

The **Networking Properties** screen is displayed. See Fig. 4-4 overleaf.

- 7) Click to highlight the **Internet Protocol Version 4 (TCP/IPv4)** option and click the **Properties** button.

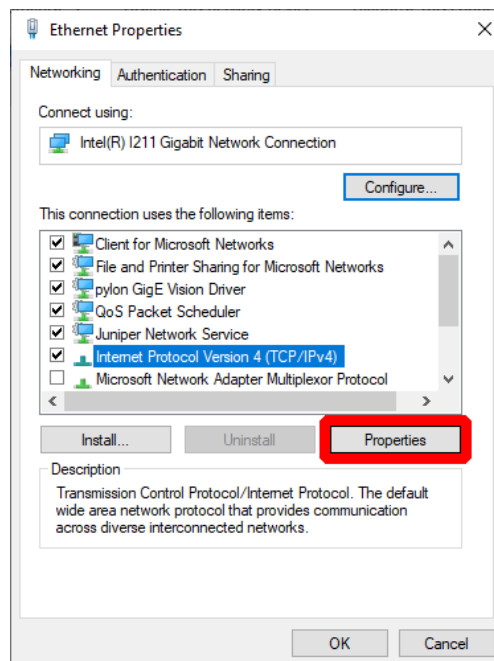


Fig. 4-4 Network status search

The **Internet Protocol Version 4 (TCP/IPv4) Properties** screen is displayed. See Fig. 4-5 below.

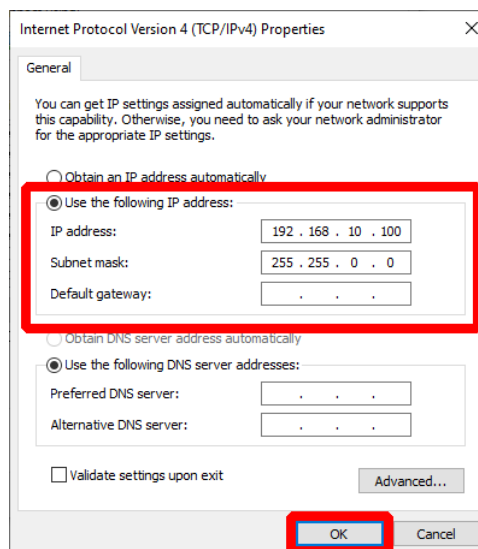



Fig. 4-5 Internet Protocol Version 4 (TCP/IPv4) Properties screen

- 8) Click the small round button next to **Use the following IP address** to select this option.
- 9) In the text boxes, enter the following values:
- IP address: 192.168.10.100
 - Subnet mask: 255.255.0.0
- 10) Click on **OK** to save these settings.
- 11) Close the **Networking Properties** and **Network Connections** screens. The Network Adapter Settings are now complete.

4.2 Starting the Software

If you are using your own Laptop/PC, download and install the software from the AMETEK Land website.

VIRALERT 3 software is available for download from **www.landviralert.com**.

- 1) On the Laptop/PC, click on the **VIRALERT 3** icon . The software will start automatically in Measurement mode.
- 2) Wait for the LED on the front panel of the Blackbody Reference Source to turn green, as shown in Figs. 4-1 and 4-2.
- 2) Position a Subject in front of the Camera. The subject must have:
 - No glasses
 - No hat or hood
 - No mask
 - No hair covering the forehead

Posters which explain the screening process and provide instructions for your staff and visitors on how to use the system are available for download from: **www.landviralert.com**

The software will automatically detect the presence of the subject and measure their body temperature.

- 3) Follow the instructions displayed on the software screen. Subjects with a normal body temperature are indicated by a green screen, as shown in Fig. 4-1.



Fig. 4-1 VIRALERT 3 Software Normal Body Temperature display

Subjects with a high body temperature are indicated by a red screen, as shown in Fig. 4-2.

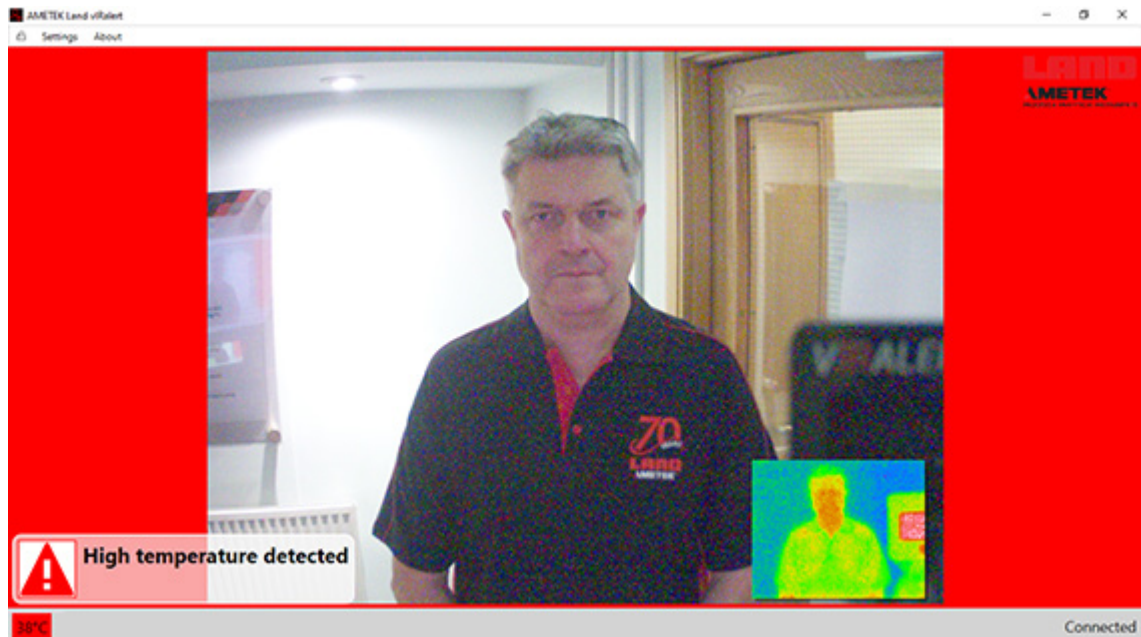


Fig. 4-2 VIRALERT 3 Software Elevated Body Temperature display

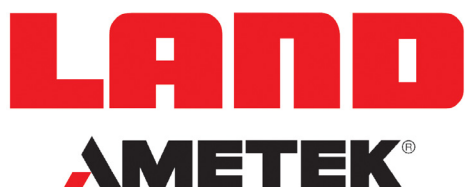
- 4) Access to the **Settings** menu, in which you can adjust the temperature alarm value, is password protected. The password is **0000**.
For more information on the Settings menu and other features of the software, refer to the **VIRALERT 3 Software User Guide**.

DISCLAIMER

Human skin temperature is affected by a wide number of environmental and physiological factors. Elevated facial skin temperature may signify a raised body core temperature; correspondingly, an elevated core temperature may not be accompanied by a raised facial skin temperature. VIRALERT systems are accurate scientific systems that must be operated strictly in accordance with the manufacturer's operating manual. VIRALERT systems are not intended, nor designed, to diagnose or detect medical conditions including, but not limited to, viruses or other illnesses. AMETEK Land thermal imaging products should only be used to detect variations of surface temperature. If elevated skin temperature is detected, the finding should be confirmed by other means, for example, an approved medical thermometer. The absence of an elevated skin temperature does not exclude a fever.

Images shown in this document are for illustrative purposes only.

VIRALERT 3 HUMAN BODY TEMPERATURE SCREENING SYSTEM



Land Instruments International

Dronfield, S18 1DJ,
England
Tel: +44 (0) 1246 417691
Email: land.enquiry@ametek.com
www.ametek-land.com

AMETEK Land - Americas

150 Freeport Road, Pittsburgh,
PA 15238, U.S.A.
Tel: +1 (412) 826 4444
Email: irsales@ametek.com
www.ametek-land.com

AMETEK Land China Service

Part A1 & A4, 2nd Floor #1
No. 26 Fute 3rd Road East,
Pilot Free Trade Zone 200131
Shanghai, China
Tel: +86 21 5868 5111 ext 122
Email: land.enquiry@ametek.com
www.ametek-land.com

AMETEK Land India Service

Divyasree N R Enclave, Block A,
4th Floor, Site No 1, EPIP Industrial Area
Whitefield, Bangalore- 560066 Karnataka,
India
Tel: +91 - 80 67823240
Email: land.enquiry@ametek.com
www.ametek-land.com

For a full list of international offices, please visit our website www.ametek-land.com

Copyright © 2020 LAND Instruments International.

Continuous product development may make it necessary to change these details without notice.

VIRALERT 3 System Quick Start Guide, Issue 1, 19 June 2020