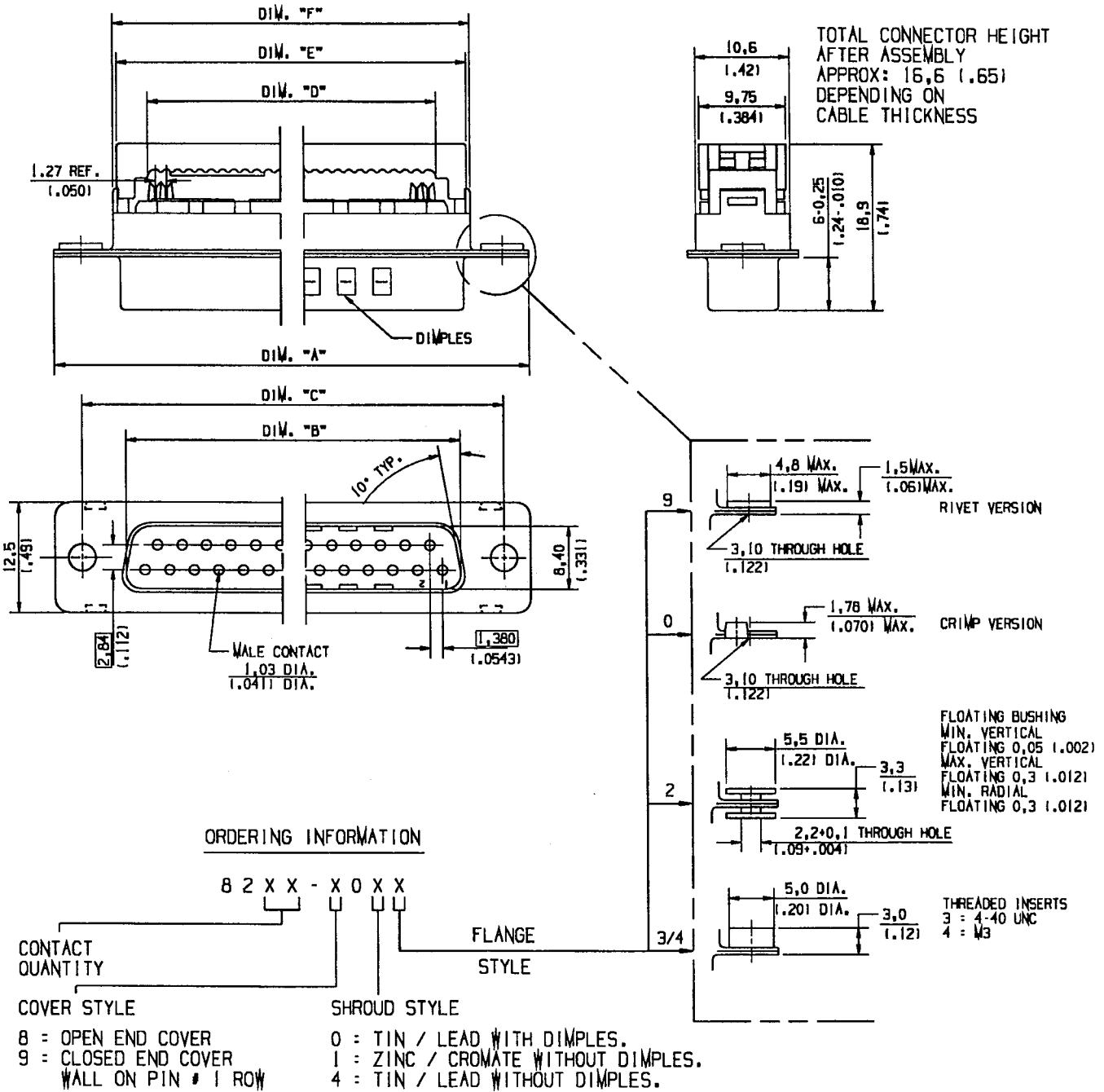


CONTACT QUANTITY	3M PART NUMBER	DIM. "A" + 0 mm - 0,76 mm	DIM. "B" + 0,10 mm - 0,10 mm	DIM. "C" + 0,10 mm - 0,10 mm	DIM. "D" + 0,10 mm - 0,10 mm	DIM. "E" + 0,10 mm - 0,10 mm	DIM. "F" + 0,25 mm - 0,25 mm
9	8209-X0XX	31,19(1.228)	16,95(.667)	25,00(.984)	11,75(.462)	16,90(.665)	17,8(.70)
15	8215-X0XX	39,52(1.556)	25,30(.996)	33,30(1.311)	19,40(.763)	25,20(.992)	26,1(1.03)
25	8225-X0XX	53,42(2.103)	39,00(1.535)	47,00(1.850)	32,20(1.267)	39,00(1.535)	39,8(1.57)
37	8237-X0XX	69,70(2.774)	55,45(2.183)	63,50(2.500)	47,60(1.874)	55,50(2.185)	56,3(2.22)



Electronic Products Division		B	OCTOBER 10, 1996	REV.	CH.
3M		ISSUE	ISSUE DATE		
TOLERANCE UNLESS NOTED		D - SUB CONNECTOR MALE PREASSEMBLED			
.0 .00 .000		CS 4227			
MM ± .25 ± .10		SHEET 1/2			
(INCH) ± ± .01 ± .005					
DR. SPIJKER					
APP. HORNIG					

DELTA CONNETOR SPECIFICATION

SCOPE : This specification details the requirements for a multipurpose pin connector having .0545" (1,384 mm)x .112" (2,84 mm) contact spacing transition between round conductor flat cable on .050" (1,27 mm) centers and a socket connector having similar spacing

UL FILE NO. : E 68080
CSA FILE NO.: LR 40971

SPECIFICATIONS:

PHYSICAL

INSULATOR MATERIAL	Glass reinforced polyester Flammability rating:UL 94V-0
COLOR	Grey
MARKING	Raised figures; 3M logo; part identification/date code number;contact position number
SHELL MATERIAL	Steel
PLATING	Tin
CONTACT MATERIAL	Copper alloy
PLATING	Selective gold in functional area over nickel
WIRE ACCOMMODATION	26 AWG solid or stranded 28 AWG solid or stranded
THREADED INSERT PUSH OUT FORCE	50 N min

ELECTRICAL

CURRENT RATING	1A
INSULATING RESISTANCE	>1 x 10 ⁹ Ω @ 500 vdc
WITHSTANDING VOLTAGE	1000 VRMS @ Sea Level

ENVIRONMENTAL

TEMPERATURE RATING	-67 °F to +221 °F (-55 °C to +105 °C)
--------------------	--

CS 4227 Sheet 2/2 Issue B