



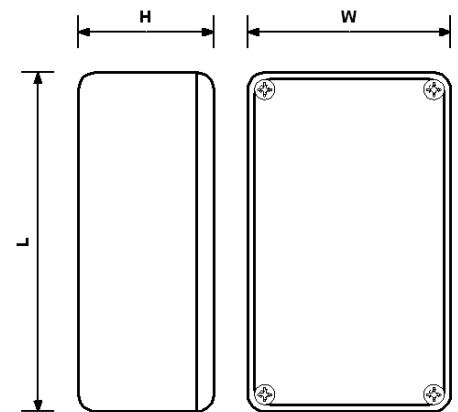
The 2000 series of multi-purpose boxes are manufactured in ABS plastic. They are available in a wide range of sizes, can be easily drilled and withstand temperatures up to 85 deg C. Also available with an RFI coating.

Available as standard in **Grey, Black, White, Orange** and **Blue**. Other colours can be specified but are subject to a minimum order quantity. **Flame Retardent UL94-V0** material is available in most sizes, with the available colours listed in the table below. **Clear lids** available upon request.

Board Adaptors are supplied with each box, which enable PCB's to be mounted horizontally.

The lids of the 2000 series have a close fitting flanged profile which is secured to the base by screws running into integral bosses.

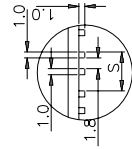
Part No.	Dimension (mm)			Flame Retardent Colours UL94-V0
	W	H	L	
2000/10	50	27	75	Grey + White
2001/11	56	40	85	White
2002/12	50	25	100	Grey + White
2003/13	62	31	112	White
2004/14	65	40	120	Grey + White
2005/15	80	50	150	White
2006/16	110	60	190	Grey + White
2007/17	62	31	112	White
2008/18	55	42	55	Grey + White
2009/19	200	65	240	N/A
2030/30	80	30	142	N/A



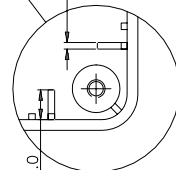
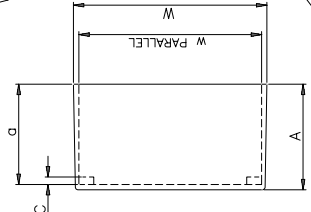
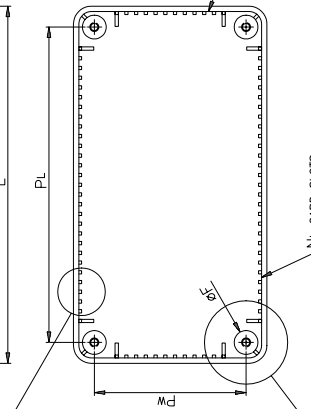
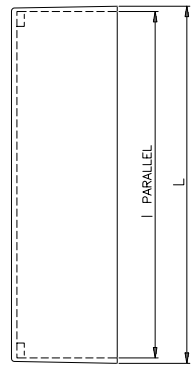
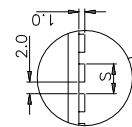
To order, specify as following example: Part No 2002/12 White / RFI

All specifications are subject to change without notice.

TYPE 1



TYPE 2



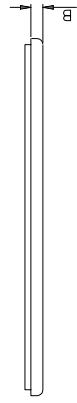
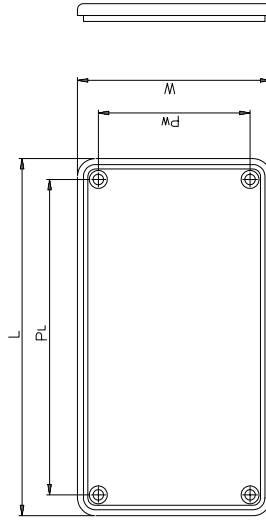
THIS DETAIL REMOVED FOR CLARITY



BOX



GENERAL TOLERANCE  $\pm 0.2$



STANDARD LID

## 2000-STANDARD

Last updated on 5 August 2003

Part No.	External			Internal			Stand off			Card Guide Slots			Pillar	Pitch	ØF		
	L	W	H	<i>l</i>	<i>w</i>	<i>h</i>	A	<i>a</i>	B	C	Type	S	N <sub>L</sub>	N <sub>W</sub>		P <sub>L</sub>	P <sub>W</sub>
BIM-2000/10	75	50	27	71.4	46.4	22.4	25	23.2	2	---	1	6.60	6	3	68.5	42.2	4.8
BIM-2001/11	85	56	37	81.4	52.4	32.4	35	33.2	2	---	1	6.60	9	5	71	42	8
BIM-2002/12	100	50	25	96.4	46.4	21.4	21	19.2	4	2.5	2	5.05	14	4	86	36	8
BIM-2003/13	112	62	31	108.4	58.4	27.4	27	25.2	4	2.5	2	5.00	17	7	98	48	8
BIM-2004/14	120	65	40	116.4	61.4	36.2	36	34.0	4	2.5	2	3.25	28	11	106	51	8
BIM-2005/15	150	80	50	146.4	76.4	46.5	46	44.3	4	2.5	2	5.00	24	10	136	66	8
BIM-2006/16	190	110	60	186.4	106.4	56.7	56	54.5	4	2.5	2	5.00	14 x 2	16	2 x 88	96	8
BIM-2007/17	112	62	31	107.4	57.4	27	27	24.8	4	---	---	---	---	---	102	51	8
BIM-2008/18	55	55	42	51.0	51.0	37.1	40	37.9	2	---	2	3.25	12	12	48	48	3.2
BIM-2009/19	250	200	64	244.0	194.0	59.4	60	57.2	4	2.5	2	3.25	2 x 31	2 x 24	2 x 58.5	2 x 46	8
BIM-2030/30	144	82	30	139.6	78.0	25.3	15	12.8	15	---	---	---	---	---	126	67	8

The information contained in this sheet is the property and copyright of Boss Enclosures Ltd.  
It must be read in conjunction with drawing file 2000-STANDARD.dxf.  
Boss Enclosures accept NO liability resulting from its mis-interpretation or use.