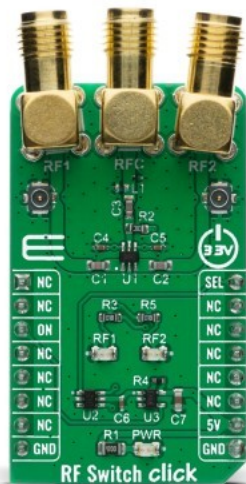


RF Switch Click



PID: MIKROE-4168

RF Switch Click is a Click board™ equipped with the [MASWSS0115](#), a GaAs PHEMT MMIC single-pole, double-throw (SPDT) switch developed by [Macom](#) for switching between small signal components such as filter banks, single-band LNAs, converters, etc. The MASWSS0115 is ideally suited for applications where a very small size and low cost are required. RF Switch Click can be used for low power, low loss requirements in all systems operating up to 3 GHz, including PCS, GSM, DCS, Bluetooth, and other receive chain applications. The Click board includes additional drivers in the form of a complementary control and power switch for safe switching operations. RF Switch Click provides easy signal switching with an insertion loss of 0.3 dB at 2.4 GHz and maximum power consumption of 20µA.

The RF Switch Click is supported by a mikroSDK compliant library, which includes functions that simplify software development. This Click board™ comes as a fully tested product, ready to be used on a system equipped with the mikroBUS™ socket.

Mikroe produces entire development toolchains for all major microcontroller architectures.

Committed to excellency, we are dedicated to helping engineers bring the project development up to speed and achieve outstanding results.



ISO 27001: 2013 certification of informational security management system.
 ISO 14001: 2015 certification of environmental management system.
 OHSAS 18001: 2008 certification of occupational health and safety management system.



ISO 9001: 2015 certification of quality management system (QMS).

Specifications

Type	Port expander
Applications	Typical applications include the systems where an RF signal has multiple possible paths like cellular infrastructure, wireless devices, automotive telematics, mobile radio, test equipment.
On-board modules	RF Switch Click uses the MASWSS0115 IC, a GaAs PHEMT MMIC single-pole, double-throw (SPDT) switch , from Macom.
Key Features	GaAs single pole, double throw (SPDT) switch in a low cost and very small size package
Interface	GPIO
Compatibility	mikroBUS
Click board size	M (42.9 x 25.4 mm)
Input Voltage	5V

Resources

[mikroBUS™ Standard specification](#)

[LibStock: mikroSDK](#)

[Click board catalog](#)

[Click boards™ Standard Page](#)

Downloads

[RF Switch click example on Libstock](#)

[MASWSS0115 datasheet](#)

[RF Switch click 2D and 3D files](#)

[RF Switch click schematic](#)

Mikroe produces entire development toolchains for all major microcontroller architectures.

Committed to excellency, we are dedicated to helping engineers bring the project development up to speed and achieve outstanding results.



ISO 27001: 2013 certification of informational security management system.
 ISO 14001: 2015 certification of environmental management system.
 OHSAS 18001: 2008 certification of occupational health and safety management system.



ISO 9001: 2015 certification of quality management system (QMS).