

# TLS8xxx2ELVxx Demoboard

Z8F61720705

## Preface

### Scope and purpose

This document provides information about the usage of the Demoboards for the low dropout linear voltage regulators TLS835D2ELVSE, TLS835B2ELV, TLS835B2ELVSE and TLS820B2ELVSE (PG-SSOP-14 package) from Infineon Technologies AG.

### Intended audience

This document is intended for engineers who develop applications.

## Table of contents

|          |   |    |
|----------|---|----|
|          | <b>Preface</b> .....                                      | 1  |
|          | <b>Table of contents</b> .....                            | 1  |
| <b>1</b> | <b>Introduction</b> .....                                 | 2  |
| 1.1      | TLS8xxx2ELVxx features .....                              | 2  |
| 1.2      | Block diagram .....                                       | 3  |
| <b>2</b> | <b>Demoboard</b> .....                                    | 4  |
| 2.1      | Operating conditions .....                                | 4  |
| 2.2      | Demoboard configuration .....                             | 4  |
| 2.2.1    | Jumper settings for all variants .....                    | 5  |
| 2.2.2    | Jumper settings TLS835D2ELVSE .....                       | 6  |
| 2.2.3    | Jumper settings TLS835B2ELVSE and TLS820B2ELVSE .....     | 8  |
| 2.2.4    | Jumper settings TLS835B2ELV .....                         | 9  |
| 2.2.5    | Signal access .....                                       | 10 |
| <b>3</b> | <b>Schematic and layout TLS8xxx2ELVxx Demoboard</b> ..... | 11 |
| 3.1      | Schematic TLS8xxx2ELVxx Demoboard .....                   | 11 |
| 3.2      | Layout TLS8xxx2ELVxx Demoboard .....                      | 12 |
| <b>4</b> | <b>Bill of material</b> .....                             | 13 |
| <b>5</b> | <b>Restrictions</b> .....                                 | 14 |
| <b>6</b> | <b>References</b> .....                                   | 15 |
| <b>7</b> | <b>Revision history</b> .....                             | 16 |
|          | <b>Disclaimer</b> .....                                   | 17 |

**Introduction**

# 1 Introduction

**Table 1** shows an overview of the feature sets and packages in the TLS8xxx2ELVxx voltage regulator family.

**Table 1 Family overview TLS8xxx2ELVxx family**

| Type          | Package    | Output current | Enable | Reset | Output voltage |
|---------------|------------|----------------|--------|-------|----------------|
| TLS835D2ELVSE | PG-SSOP-14 | 350 mA         | ✓      | ✓     | 3.3 V or 5 V   |
| TLS835B2ELVSE | PG-SSOP-14 | 350 mA         | ✓      | -     | 3.3 V or 5 V   |
| TLS835B2ELV   | PG-SSOP-14 | 350 mA         | ✓      | -     | adjustable     |
| TLS820B2ELVSE | PG-SSOP-14 | 200 mA         | ✓      | -     | 3.3 V or 5 V   |

## 1.1 TLS8xxx2ELVxx features

- Wide input voltage range from 3.0 V to 40 V
- Output voltage selectable (3.3 V and 5 V) or adjustable (between 1.5 V and 6 V)
- 200 mA or 350 mA current capability
- Output voltage accuracy  $\leq \pm 2\%$
- Ultra low current consumption, typical 20  $\mu$ A
- Very low dropout voltage, typical 100 mV at 100 mA
- Stable with ceramic output capacitor of 1  $\mu$ F
- Adjustable reset threshold down to 2 V<sup>1)</sup>
- Wide temperature range
- Green product (RoHS compliant)
- AEC Qualified
- internal protection features make the devices robust against immediate damage:
  - output current limitation
  - overtemperature shutdown

These features make the voltage regulators perfectly suitable as automotive supplies that are connected to the battery permanently and that need to operate in cranking condition.

<sup>1</sup> valid for TLS835D2ELVSE

Introduction

## 1.2 Block diagram

Figure 1 shows the block diagram of TLS835D2ELVSE, which offers the full feature set.

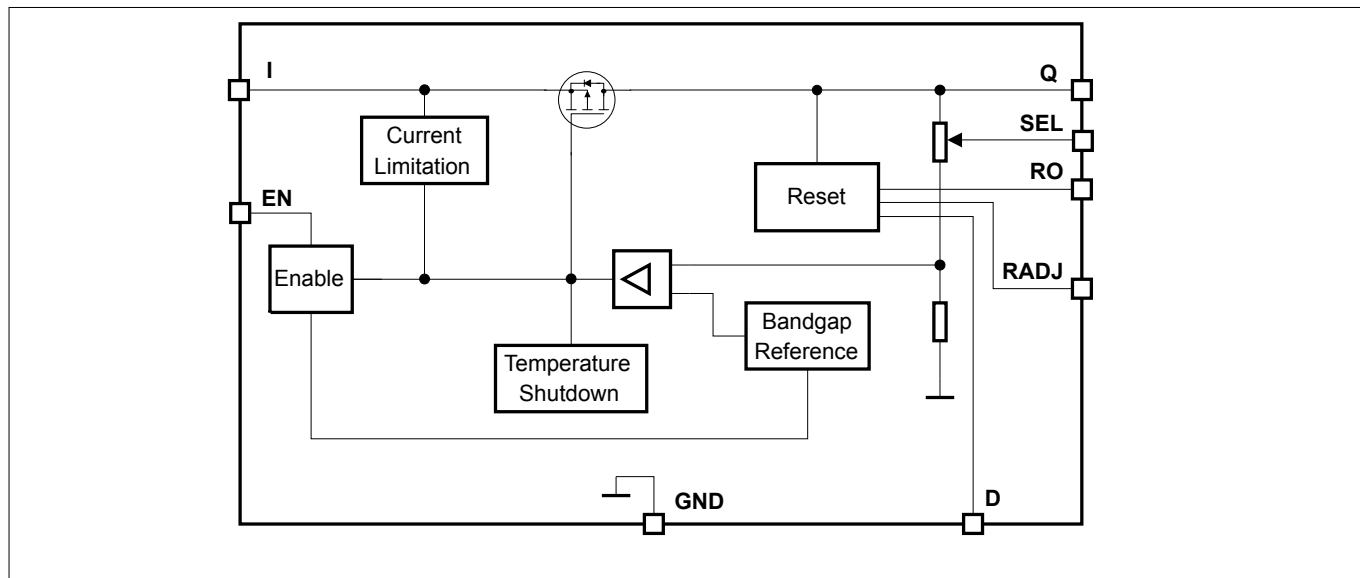


Figure 1 Block diagram of TLS835D2ELVSE

**Demoboard**

## 2 Demoboard

The TLS8xxx2ELVxx Demoboard is available for all devices of the TLS8xxx2ELVxx voltage regulator family in a PG-SSOP-14 package (see the device list in [Table 1](#)).

[Figure 2](#) shows the TLS8xxx2ELVxx Demoboard equipped with TLS835D2ELVSE



**Figure 2** TLS8xxx2ELVxx Demoboard

### 2.1 Operating conditions

To avoid electrical damage of the Demoboard, the operating range defined in [Table 2](#) must be followed.

**Table 2** Operating conditions<sup>1)</sup>

| Parameter                         | Pin  | Values |                 | Unit | Note                                |
|-----------------------------------|------|--------|-----------------|------|-------------------------------------|
|                                   |      | Min.   | Max.            |      |                                     |
| Board supply voltage              | VIN  | 0      | 40              | V    | power supply                        |
| Regulator output voltage          | VOUT | 0      | 6 <sup>2)</sup> | V    | –                                   |
| Enable input signal               | EN   | 0      | 40              | V    | enable or disable voltage regulator |
| Reset output signal <sup>3)</sup> | RO   | 0      | 5               | V    | indicate, whether reset occurred    |
| Ground                            | GND  | 0      | 0               | V    | system GND                          |

### 2.2 Demoboard configuration

The TLS8xxx2ELVxx Demoboards can be easily configured via jumpers on the board. The board provides the following configuration options:

- Input capacitor C1 (X7)
- Enable function (X8)
- Placeholder for additional output capacitor (C4)
- Placeholder for external pull-up resistor for Reset Output RO (R2)
- Selectable output voltage (X9)
- Adjustable output voltage: placeholder for voltage divider (R3, R4) and jumper (X10)
- Adjustable reset threshold: placeholder for voltage divider (R5, R6) and jumper (X11)
- Reset timing selection (X12)

<sup>1</sup> Demoboard operates at an ambient temperature of 25°C

<sup>2</sup> Nominal output voltage depends on voltage version

<sup>3</sup> Applicable to TLS835D2ELVSE only

---

Demoboard

## 2.2.1 Jumper settings for all variants

### Header X7 (Input capacitor C1)

A capacitor C1 of 47  $\mu$ F can be connected to VIN by placing a jumper on X7.

### Header X8 (Enable function)

EN input pin can be configured by X8.

**Table 3 Header X8 options for Enable function**

| X8                       | Function   |
|--------------------------|--|
| EN $\leftrightarrow$ VIN | The regulator is enabled while EN pin is connected to VIN                    |
| EN $\leftrightarrow$ GND | The regulator is disabled while EN pin is connected to GND                   |
| open                     | The EN input pin is supplied from the EN banana jack connector <sup>4)</sup> |

---

<sup>4</sup> Without supplying a signal to EN, the regulator is disabled because of the internal pull-down resistor

**Demoboard**

**2.2.2 Jumper settings TLS835D2ELVSE**

**Headers X9 (selectable output voltage)**

The output voltage can be configured by X9.

**Table 4 Header X9 options for selectable output voltage**

| X9         | Function                                   |
|------------|--|
| SEL ↔ VOUT | VOUT is configured to be 5 V <sup>5)</sup> |
| SEL ↔ GND  | VOUT is configured to be 3.3 V             |

**Headers X12 (Reset timing selection)**

Reset delay timing can be configured by X12.

**Table 5 Header X12 options for reset delay timing**

| X12        | Function  |
|------------|---|
| VD ↔ 100nF | Reset delay time is configured to typically 10 μs <sup>5)</sup> |
| VD ↔ 1uF   | Reset delay time is configured to typically 28 μs               |

**Headers X11 (Adjustable reset threshold )**

Reset threshold can be configured by X11 and voltage divider R5, R6.

**Table 6 Header X11 options for adjustable reset threshold**

| X11        | Function  |
|------------|---|
| RADJ ↔ GND | Default reset threshold is selected <sup>5)</sup>   |
| RADJ ↔ DIV | Reset is configured to be between 2 V and 4.2 V (for 5 V output voltage), or between 2 V and 2.75 V (for 3.3 V output voltage), depending on the voltage divider R5, R6 |

The undervoltage reset switching threshold can be adjusted according to the application’s requirements by connecting an external voltage divider (R5, R6). For selecting the default threshold connect RADJ to GND.

With a voltage divider connected, the reset switching threshold  $V_{RT,low,new}$  is calculated according to the following equation:

$$V_{RT,low,new} = V_{RADJ,th} \left( \frac{R5}{R6} + 1 \right)$$

**Equation 1**

**Header X10**

Header X10 is not relevant and should be set to open.

**Default setting of the jumpers TLS835D2ELVSE**

**Figure 3** shows the default setting of the jumpers of TLS835D2ELVSE demo board.

<sup>5)</sup> Default setting

Demoboard

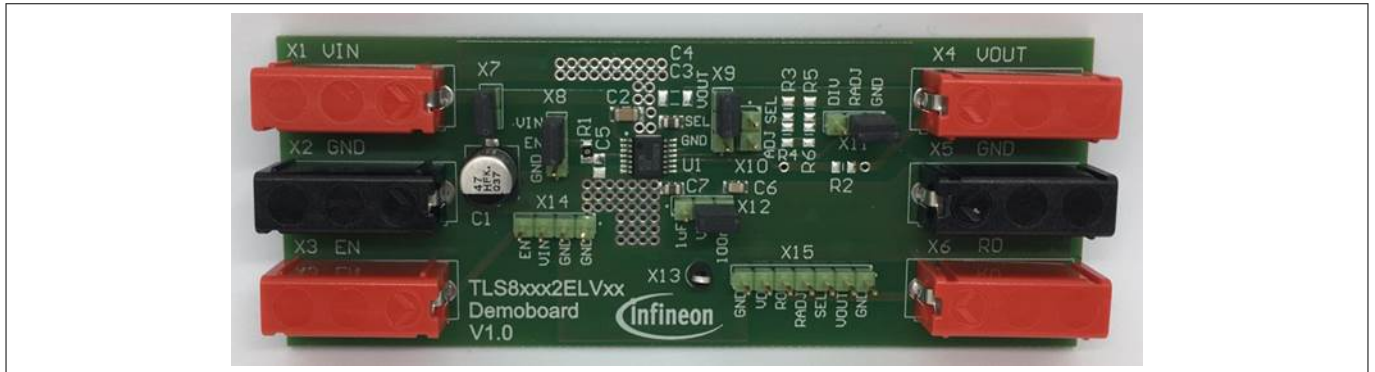


Figure 3 TLS835D2ELVSE default jumper configuration

**Demoboard**

**2.2.3 Jumper settings TLS835B2ELVSE and TLS820B2ELVSE**

**Headers X9 (selectable output voltage)**

The output voltage can be configured by X9.

**Table 7 Header X9 options for selectable output voltage**

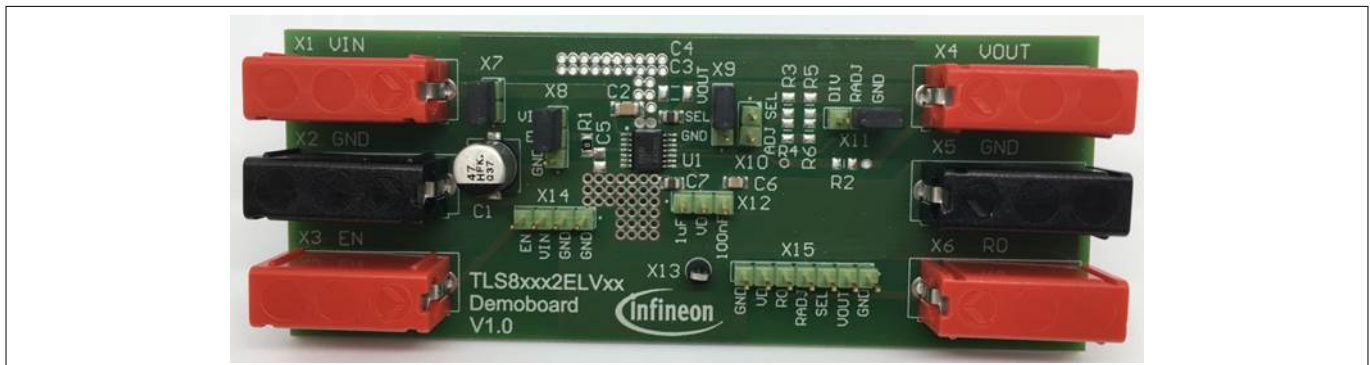
| X9         | Function                                   |
|------------|--|
| SEL ↔ VOUT | VOUT is configured to be 5 V <sup>6)</sup> |
| SEL ↔ GND  | VOUT is configured to be 3.3 V             |

**Headers X10, X11 and X12**

These headers are not relevant. They can be set to open or as shown in [Figure 4](#)

**Default setting of the jumpers TLS835B2ELVSE and TLS820B2ELVSE**

[Figure 4](#) shows the default setting of the jumpers of TLS835B2ELVSE and TLS820B2ELVSE demoboards.



**Figure 4 TLS835B2ELVSE and TLS820B2ELVSE default jumper configuration**

<sup>6</sup> Default setting



**Demoboard**

**2.2.4 Jumper settings TLS835B2ELV**

**Headers X9 and X10 (Adjustable output voltage)**

The output voltage can be configured by X9, X10 and voltage divider R3, R4.

**Table 8 Headers X9 and X10 options for adjustable output voltage**

| <b>X9 / X10</b>             | <b>Function</b>   |
|-----------------------------|---|
| X9: SEL ↔ VOUT<br>X10: open | VOUT is configured to be 1.5 V <sup>7)</sup>  |
| X9: open<br>X10: SEL ↔ ADJ  | VOUT is configured to be between 1.5 V and 6 V, depending on the voltage divider R3, R4 |

If the ADJ pin is to be supplied from the output voltage of the voltage divider, then the resistors of the voltage divider must be implemented. The value of the resistors can be easily calculated when neglecting the current flowing into the ADJ pin as follows:

$$\frac{R_1}{R_2} = \frac{V_Q}{V_{ADJ}} - 1$$

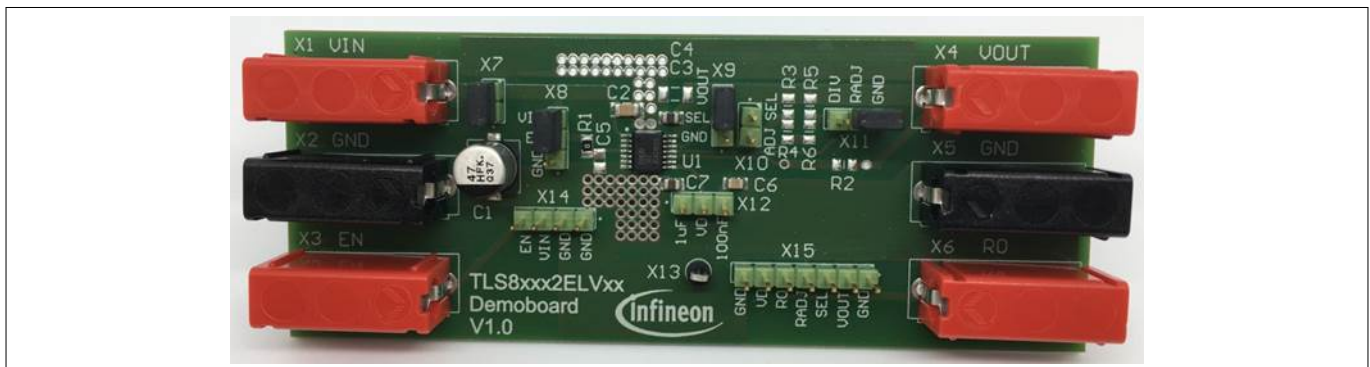
**Equation 2**

**Headers X11 and X12**

These headers are not relevant. They can be set to open or as shown in [Figure 5](#)

**Default setting of the jumpers TLS835B2ELV**

[Figure 5](#) shows the default setting of the jumpers of TLS835B2ELV demo board.



**Figure 5 TLS835B2ELV default jumper configuration**

<sup>7</sup> Default setting

---

**Demoboard**

### **2.2.5 Signal access**

The connectors X13, X14 and X15 offer easy signal access, for example for probes for an oscilloscope.

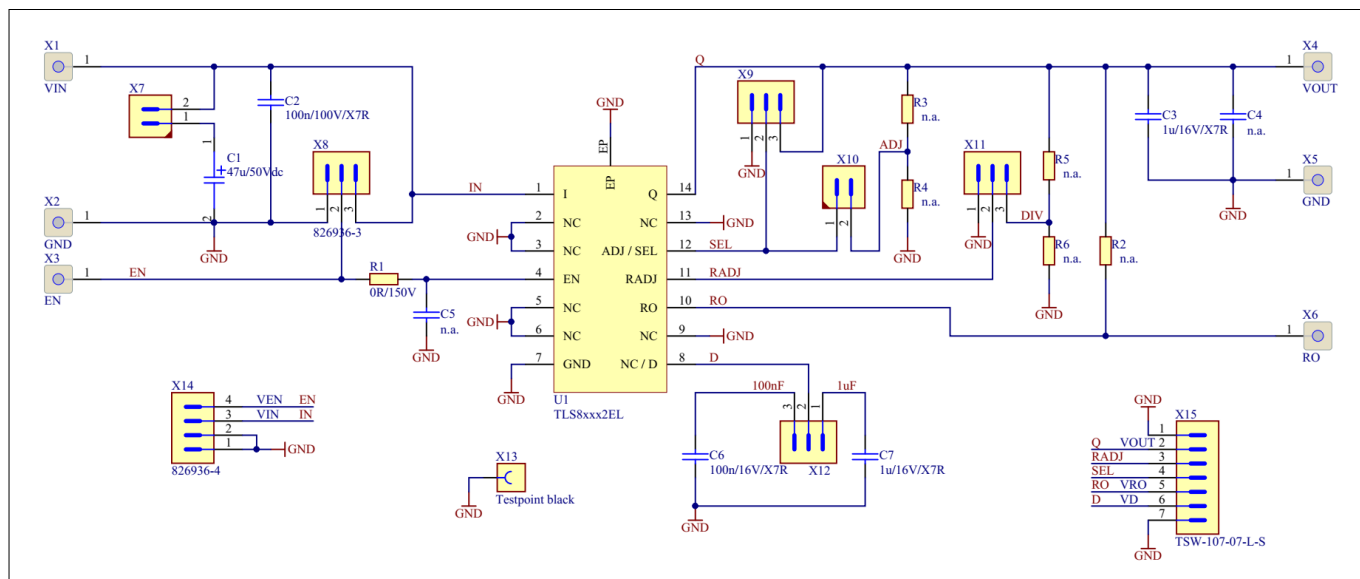
**Table 9 Signals on connector**

| <b>Connector</b> | <b>Accessible signal</b>  |
|------------------|---|
| X13              | <ul style="list-style-type: none"><li>• GND (ground)</li></ul>  |
| X14              | <ul style="list-style-type: none"><li>• EN (Enable input signal)</li><li>• VIN (input voltage)</li><li>• GND (ground)</li><li>• GND (ground)</li></ul>  |
| X15              | <ul style="list-style-type: none"><li>• GND (ground)</li><li>• VD (Reset delay setting)</li><li>• RO (Reset output signal)</li><li>• RADJ (Reset threshold setting)</li><li>• SEL (output voltage selection)</li><li>• VOUT (output voltage)</li><li>• GND (ground)</li></ul> |

**Schematic and layout TLS8xxx2ELVxx Demoboard**

### 3 Schematic and layout TLS8xxx2ELVxx Demoboard

#### 3.1 Schematic TLS8xxx2ELVxx Demoboard



**Figure 6 Schematic of TLS8xxx2ELVxx Demoboard**

Schematic and layout TLS8xxx2ELVxx Demoboard

3.2 Layout TLS8xxx2ELVxx Demoboard

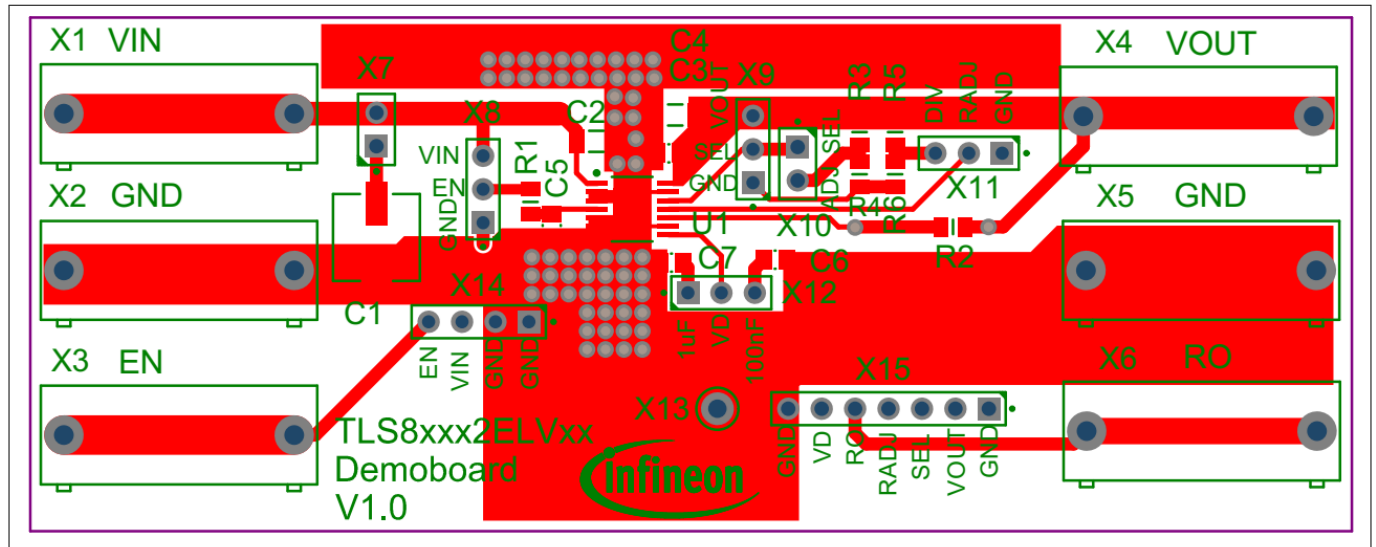


Figure 7 Top layer of TLS8xxx2ELVxx Demoboard

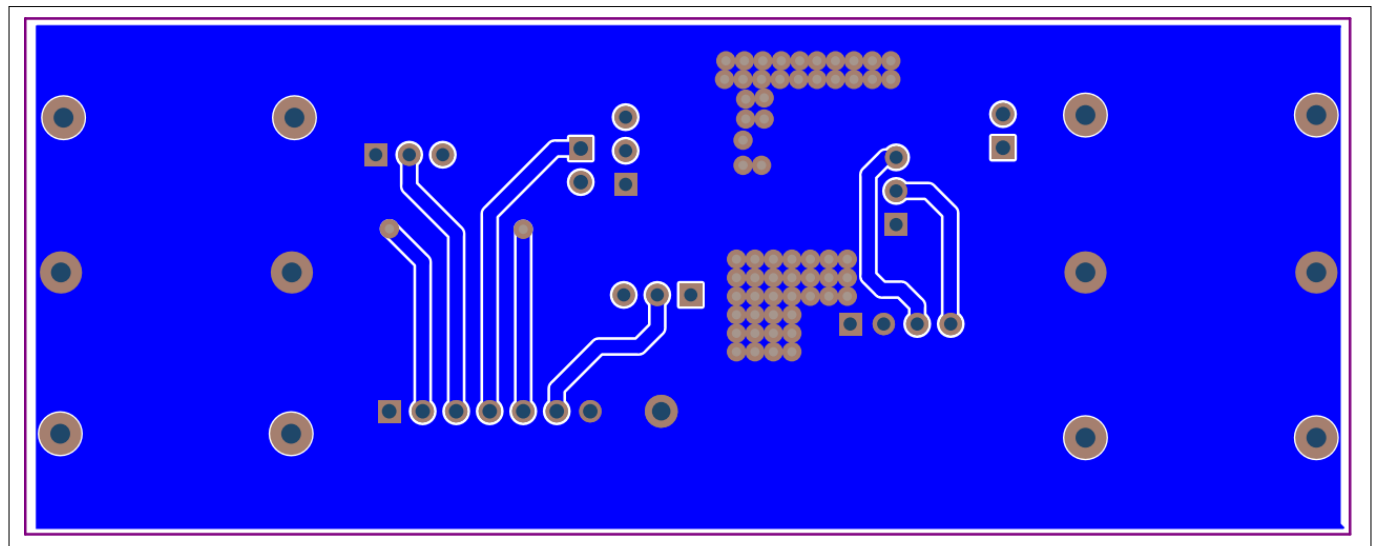


Figure 8 Bottom layer of TLS8xxx2ELVxx Demoboard

Bill of material

## 4 Bill of material

Table 10 Bill of Material

| Part             | Value  | Package    |
|------------------|--|------------|
| U1               | one of the following: <ul style="list-style-type: none"> <li>• TLS835D2ELVSE</li> <li>• TLS835B2ELV</li> <li>• TLS835B2ELVSE</li> <li>• TLS820B2ELVSE</li> </ul> | PG-SSOP-14 |
| VIN              | banana jack  | BABU4MM    |
| GND              | banana jack  | BABU4MM    |
| EN               | banana jack  | BABU4MM    |
| VOUT             | banana jack  | BABU4MM    |
| GND              | banana jack  | BABU4MM    |
| RO               | banana jack  | BABU4MM    |
| R1               | 0 $\Omega$   | R0805      |
| R2, R3, R4       | n.a.   | R0805      |
| C1               | 47 $\mu$ F / 50 V  | SMD        |
| C2               | 100 nF / 100 V   | C1206      |
| C3, C7           | 1 $\mu$ F / 16 V   | C0805      |
| C4               | n.a.   | C1206      |
| C5               | n.a.   | C0805      |
| C6               | 100 nF / 100 V   | C0805      |
| X7, X10          | 2 pin header   | -          |
| X8, X9, X11, X12 | 3 pin header   | -          |
| X13              | Test point   | -          |
| X14              | 4 pin header   | -          |
| X15              | 7 pin header   | -          |

---

**Restrictions**

## **5 Restrictions**

This Demoboard offers limited features only for evaluation and testing of Infineon products. The Demoboard is not an end product or finished appliance, nor is it intended or authorized by Infineon to be integrated into end products. The Demoboard may not be used in any production system.

For further information please contact [www.infineon.com](http://www.infineon.com).

---

References

## 6 References

Table 11

| Number | Bibliography  |
|--------|---|
| [1]    | What The Designer Should Know – Introduction to Automotive Linear Voltage Regulators.<br>Infineon Technologies AG |
| [2]    | TLS835D2ELVSE Data Sheet, Infineon Technologies AG  |
| [3]    | TLS835B2ELV Data Sheet, Infineon Technologies AG  |
| [4]    | TLS835B2ELVSE Data Sheet, Infineon Technologies AG  |
| [5]    | TLS820B2ELVSE Data Sheet, Infineon Technologies AG  |

---

**Revision history**

## **7 Revision history**

| <b>Revision</b> | <b>Date</b> | <b>Changes</b>           |
|-----------------|-------------|--------------------------|
| 1.0             | 2018-05-15  | Application Note created |



## Trademarks

All referenced product or service names and trademarks are the property of their respective owners.

**Edition 2018-05-15**

**Published by**

**Infineon Technologies AG**

**81726 Munich, Germany**

**© 2018 Infineon Technologies AG**

**All Rights Reserved.**

**Do you have a question about any aspect of this document?**

**Email: [erratum@infineon.com](mailto:erratum@infineon.com)**

**Document reference**

**IFX-Z8F61720705**

## IMPORTANT NOTICE

The information contained in this application note is given as a hint for the implementation of the product only and shall in no event be regarded as a description or warranty of a certain functionality, condition or quality of the product. Before implementation of the product, the recipient of this application note must verify any function and other technical information given herein in the real application. Infineon Technologies hereby disclaims any and all warranties and liabilities of any kind (including without limitation warranties of non-infringement of intellectual property rights of any third party) with respect to any and all information given in this application note.

The data contained in this document is exclusively intended for technically trained staff. It is the responsibility of customer's technical departments to evaluate the suitability of the product for the intended application and the completeness of the product information given in this document with respect to such application.

## WARNINGS

Due to technical requirements products may contain dangerous substances. For information on the types in question please contact your nearest Infineon Technologies office.

Except as otherwise explicitly approved by Infineon Technologies in a written document signed by authorized representatives of Infineon Technologies, Infineon Technologies' products may not be used in any applications where a failure of the product or any consequences of the use thereof can reasonably be expected to result in personal injury