

# STARPOWER

SEMICONDUCTOR

**MOSFET**

## MD15FSR120L2SF

**1200V/15A 6 in one-package**

### General Description

STARPOWER MOSFET Power Module provides very low  $R_{DS(on)}$  as well as optimized intrinsic diode. It's designed for the applications such SMPS and solar power.

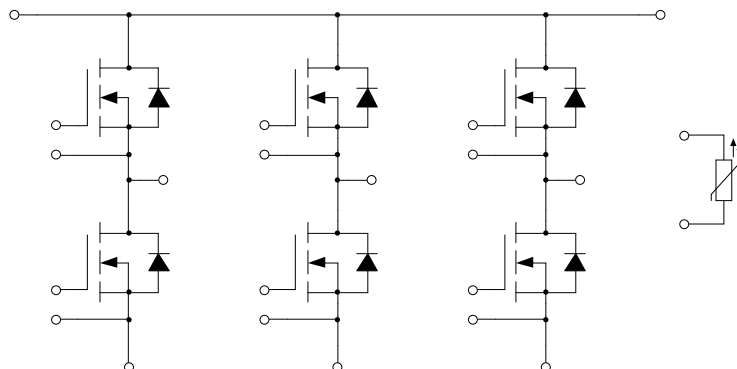
### Features

- SiC power MOSFET
- Low  $R_{DS(on)}$
- Optimized intrinsic reverse diode
- Avalanche ruggedness
- Low inductance case
- substrate for low thermal resistance
- Isolated heatsink using DBC technology

### Typical Applications

- Uninterruptible power supply
- Solar Power
- Switching mode power supply

### Equivalent Circuit Schematic



**Absolute Maximum Ratings**  $T_C=25^{\circ}\text{C}$  unless otherwise noted**MOSFET**

Symbol	Description	Value	Unit
$V_{DSS}$	Drain-Source Voltage	1200	V
$V_{GSS}$	Gate-Source Voltage	-4/+22	V
$I_D$	Drain Current @ $T_C=25^{\circ}\text{C}$ @ $T_C=100^{\circ}\text{C}$	25	A
		15	A
$I_{DM}$	Pulsed Drain Current	77	A
$P_D$	Maximum Power Dissipation @ $T_j=175^{\circ}\text{C}$	101	W

**Inverse Diode**

Symbol	Description	Value	Unit
$I_S$	Source Current @ $T_C=100^{\circ}\text{C}$	13	A
$I_{SM}$	Pulsed Source Current	77	A

**Module**

Symbol	Description	Value	Unit
$T_{jmax}$	Maximum Junction Temperature	175	$^{\circ}\text{C}$
$T_{jop}$	Operating Junction Temperature	-40 to +150	$^{\circ}\text{C}$
$T_{STG}$	Storage Temperature Range	-40 to +125	$^{\circ}\text{C}$
$V_{ISO}$	Isolation Voltage RMS, $f=50\text{Hz}$ , $t=1\text{min}$	2500	V

**MOSFET Characteristics**  $T_C=25^\circ\text{C}$  unless otherwise noted

Symbol	Parameter	Test Conditions	Min.	Typ.	Max.	Unit
$R_{DS(on)}$	Static Drain-Source On-Resistance	$I_D=10\text{A}, V_{GS}=18\text{V}, T_j=25^\circ\text{C}$		80	100	$\text{m}\Omega$
		$I_D=10\text{A}, V_{GS}=18\text{V}, T_j=125^\circ\text{C}$		120		
$V_{GS(th)}$	Gate-Source Threshold Voltage	$I_D=5.0\text{mA}, V_{DS}=10\text{V}, T_j=25^\circ\text{C}$	2.7		5.6	V
$g_{fs}$	Forward Transconductance	$V_{DS}=10\text{V}, I_D=10\text{A}, T_j=25^\circ\text{C}$		4.4		S
$I_{DSS}$	Drain-Source Leakage Current	$V_{DS}=V_{DSS}, V_{GS}=0\text{V}, T_j=25^\circ\text{C}$			10	$\mu\text{A}$
$I_{GSS}$	Gate-Source Leakage Current	$V_{GS}=V_{GSS}, V_{DS}=0\text{V}, T_j=25^\circ\text{C}$			100	nA
$R_{Gint}$	Internal Gate Resistance			12.0		$\Omega$
$C_{iss}$	Input Capacitance	$V_{GS}=0\text{V}, V_{DS}=800\text{V}, f=1.0\text{MHz}$		785		pF
$C_{oss}$	Output Capacitance			75		pF
$C_{rss}$	Reverse Transfer Capacitance			35		pF
$Q_g$	Total Gate Charge	$I_D=10\text{A}, V_{DS}=600\text{V}, V_{GS}=18\text{V}$		60		nC
$Q_{gs}$	Gate-Source Charge			15		nC
$Q_{gd}$	Gate-Drain ("Miller") Charge			25		nC
$t_{d(on)}$	Turn-On Delay Time	$V_{DS}=400\text{V}, I_D=10\text{A}, R_G=0\Omega, V_{GS}=0/18\text{V}, T_j=25^\circ\text{C}$		15		ns
$t_r$	Rise Time			22		ns
$t_{d(off)}$	Turn-Off Delay Time			29		ns
$t_f$	Fall Time			24		ns
$E_{on}$	Turn-On Switching Loss	$V_{DS}=600\text{V}, I_D=10\text{A}, R_G=0\Omega, V_{GS}=0/18\text{V}, T_j=25^\circ\text{C}$		0.13		mJ
$E_{off}$	Turn-Off Switching Loss			0.02		mJ

**Inverse Diode Characteristics**  $T_C=25^\circ\text{C}$  unless otherwise noted

Symbol	Parameter	Test Conditions	Min.	Typ.	Max.	Unit	
$V_F$	Diode Forward Voltage	$I_S=10\text{A}, V_{GS}=0\text{V}, T_j=25^\circ\text{C}$		3.20		V	
$t_{rr}$	Diode Reverse Recovery Time	$V_R=600\text{V}, I_S=10\text{A}, di/dt=1100\text{A}/\mu\text{s}, V_{GS}=0\text{V}, T_j=25^\circ\text{C}$		17		ns	
$Q_r$	Diode Reverse Recovery Charge				50		nC
$I_{rm}$	Peak Reverse Recovery Current				6.0		A

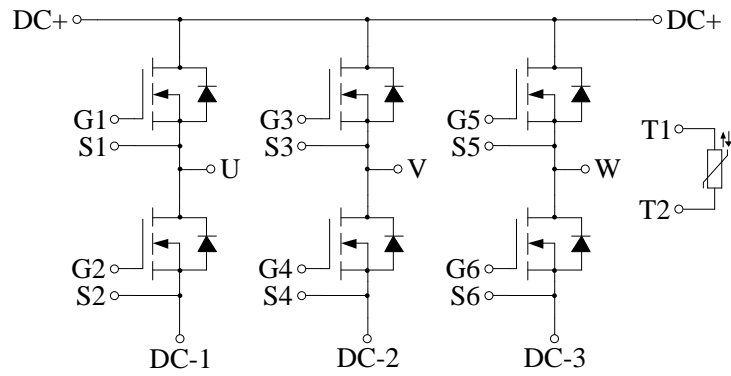
**NTC Characteristics**  $T_C=25^{\circ}\text{C}$  unless otherwise noted

Symbol	Parameter	Test Conditions	Min.	Typ.	Max.	Unit
$R_{25}$	Rated Resistance			5.0		$\text{k}\Omega$
$\Delta R/R$	Deviation of $R_{100}$	$T_C=100^{\circ}\text{C}, R_{100}=493.3\Omega$	-5		5	%
$P_{25}$	Power Dissipation				20.0	mW
$B_{25/50}$	B-value	$R_2=R_{25}\exp[B_{25/50}(1/T_2-1/(298.15\text{K}))]$		3375		K
$B_{25/80}$	B-value	$R_2=R_{25}\exp[B_{25/80}(1/T_2-1/(298.15\text{K}))]$		3411		K
$B_{25/100}$	B-value	$R_2=R_{25}\exp[B_{25/100}(1/T_2-1/(298.15\text{K}))]$		3433		K

**Module Characteristics**  $T_C=25^{\circ}\text{C}$  unless otherwise noted

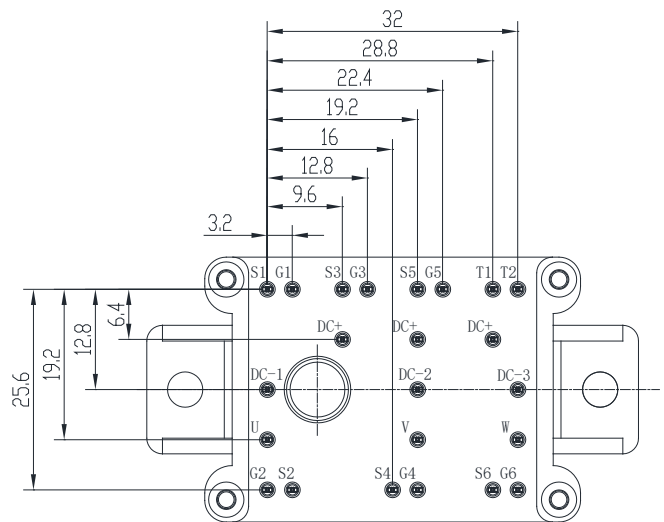
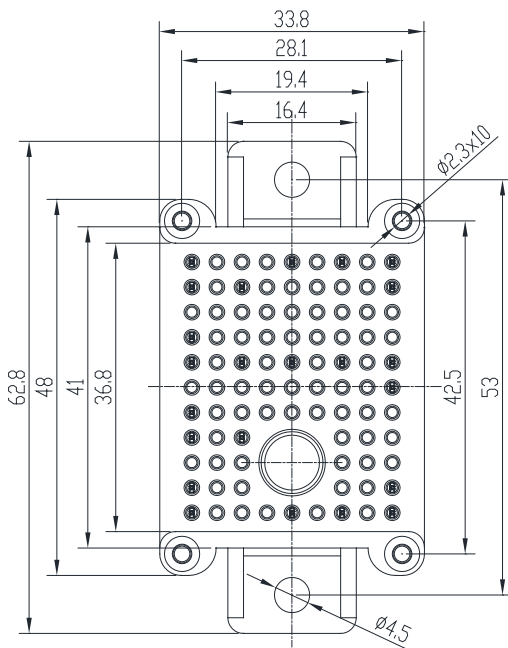
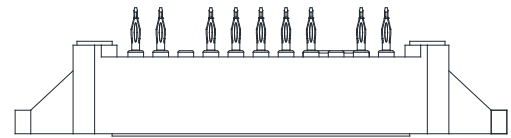
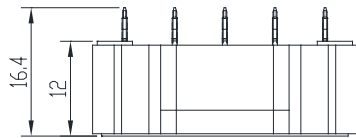
Symbol	Parameter	Min.	Typ.	Max.	Unit
$R_{thC}$	Junction-to-Case (per MOSFET)		1.338	1.472	K/W
$R_{thCH}$	Case-to-Heatsink (per MOSFET) Case-to-Heatsink (per Module)		0.348 0.058		K/W
F	Mounting Force Per Clamp	20		50	N.m
G	Weight of Module		24		g

**Circuit Schematic**



**Package Dimensions**

Dimensions in Millimeters



## Terms and Conditions of Usage

The data contained in this product datasheet is exclusively intended for technically trained staff. you and your technical departments will have to evaluate the suitability of the product for the intended application and the completeness of the product data with respect to such application.

This product data sheet is describing the characteristics of this product for which a warranty is granted. Any such warranty is granted exclusively pursuant the terms and conditions of the supply agreement. There will be no guarantee of any kind for the product and its characteristics.

Should you require product information in excess of the data given in this product data sheet or which concerns the specific application of our product, please contact the sales office, which is responsible for you (see [www.powersemi.cc](http://www.powersemi.cc)), For those that are specifically interested we may provide application notes.

Due to technical requirements our product may contain dangerous substances. For information on the types in question please contact the sales office, which is responsible for you.

Should you intend to use the Product in aviation applications, in health or live endangering or life support applications, please notify.

If and to the extent necessary, please forward equivalent notices to your customers.  
Changes of this product data sheet are reserved.