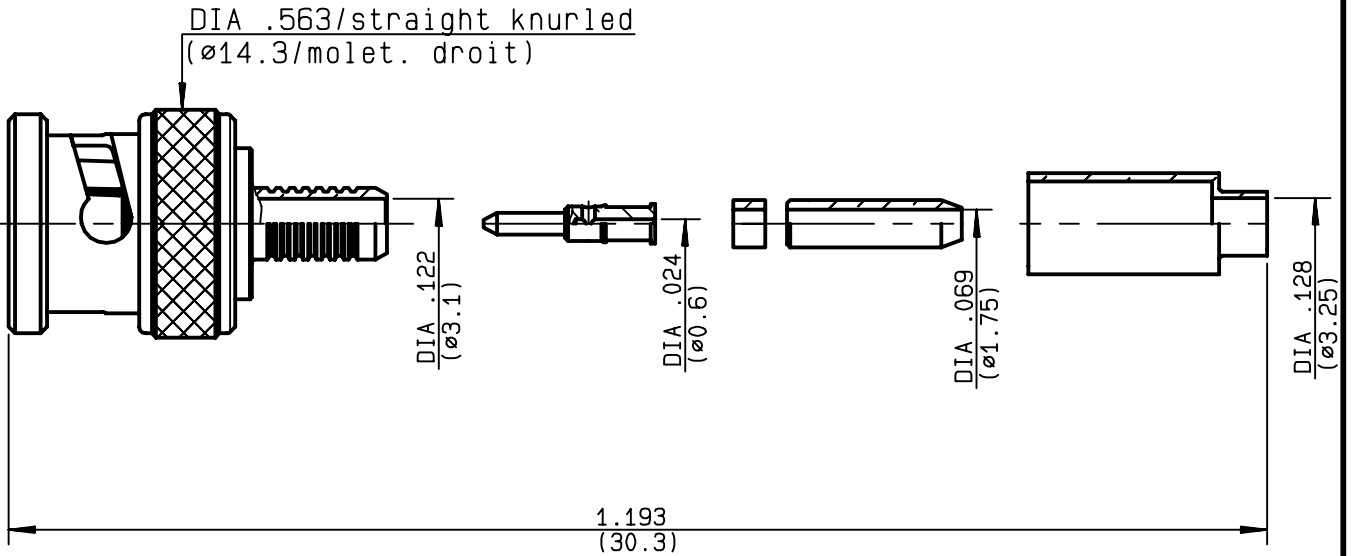


**STRAIGHT PLUG CRIMP TYPE
CABLE 2.6/50 S**

R141.075.000
SERIES BNC



NOMINAL IMPEDANCE	50 Ω	CABLES : KX 22A RG 188 RG 316
FREQUENCY RANGE	0-4 GHz	
TEMPERATURE RATING	-65/+165 °C	
V.S.W.R	1.2 + 0 x F(GHz)Maxi	
RF INSERTION LOSS	0.115 √F(GHz) dB Maxi	
VOLTAGE RATING	335 Veff Maxi	
DIELECTRIC WITHSTANDING VOLTAGE	1000 Veff Mini	
INSULATION RESISTANCE	5000 MΩMini	OTHERS CHARACTERISTICS
HERMETIC SEAL	NA Atm.cm ³ /s	CABLE RETENTION 40 N Mini
LEAKAGE (pressurized only)	NA	CENTER CONTACT RETENTION
MECHANICAL DURABILITY	500 Cycles	Axial force - mating end 27 N Mini
WEIGHT	10 gr	Axial force - opposite end 27 N Mini
SPECIFICATION		Torque NA cm.N Mini
		RECOMMENDED TORQUES
		Mating NA cm.N
		Panel nut NA cm.N
		Clamp nut NA cm.N

CONNECTOR PARTS	MATERIALS	FINISH	(all values are given) in micrometers
BODY	BRASS	NICKEL 2	
OUTER CONTACT			
CENTER CONTACT	BRASS	GOLD 0.5 OVER NICKEL 2	
INSULATOR	PTFE	-	
GASKET	SILICONE RUBBER	-	
OTHERS PIECES	BRASS	NICKEL 2	

ISSUE 9945L00	CREATION DATE 04/04/1995	FILE PART-NUMBER
-------------------------	------------------------------------	------------------



Connect to the future

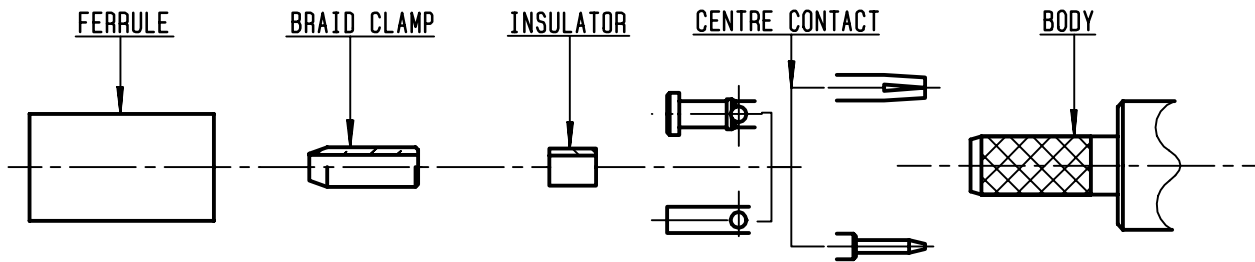
ILLMER

The information given here is subject to change without notice.
Design changes may be in order to improve the product .



R141.075.000

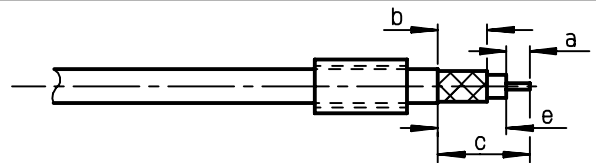
ISSUE **9945L00** SERIES **BNC**



①

Slide onto the cable the ferrule
Strip the cable .

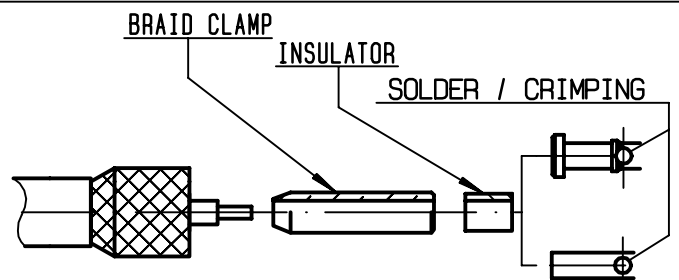
-
-



Stripping	a	b	c	d	e
inch	0.157	0.394	0.728	0	0.571
mm	4	10	18.5		14.5

②

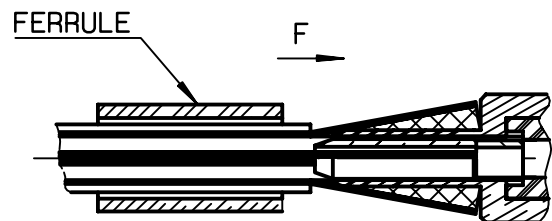
Fan the braid .
Slide the braid clamp and insulator
between the dielectrique and the braid .
Slide on centre contact until it
bottoms against cable dielectrique .
Solder or crimp centre contact .
Crimping tool : R282 223 000 (Hex. : .068)
or crimping tool R282 293 000 (M22520/5-01)
+ dies R282 235 011 (M22520/5-11)



③

Slide cable into the body until
bottoms against insulator .
Slide ferrule over the braid .
(In direction F)

-



④

Crimp the ferrule with crimping tool
R 282 223 000 (Hex. : .213) or
crimping tool R282 293 000 (M22520/5-01)
+ dies R282 235 011 (M22520/5-11)
Cut the excess of braid .

-
-
-
-

