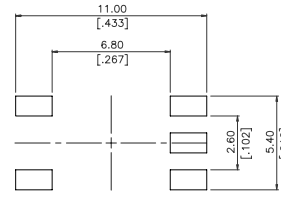
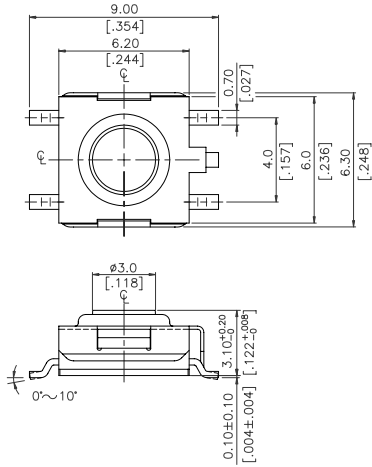


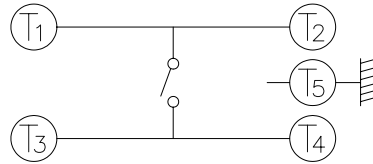
DTSHW-6, DTS(G)MW-6 SERIES

DIMENSIONS

DTSGMW-66

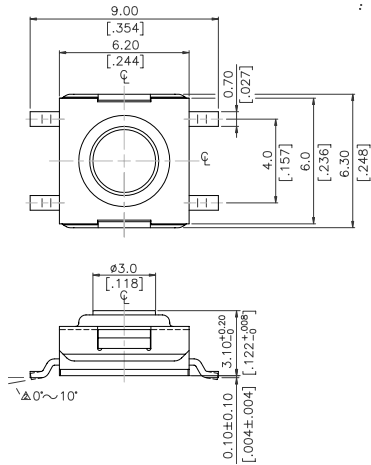


P.C.B LAYOUT

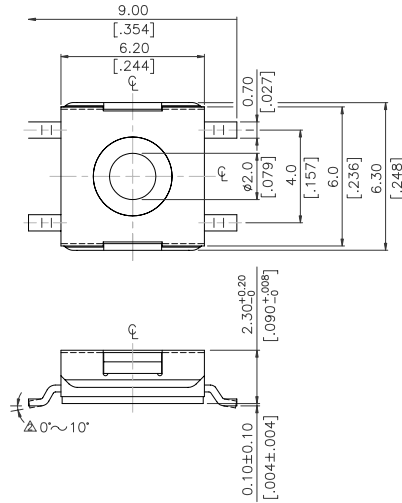


CIRCUIT DIAGRAM

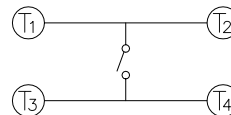
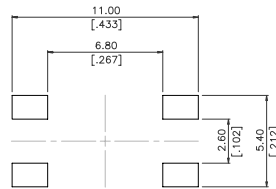
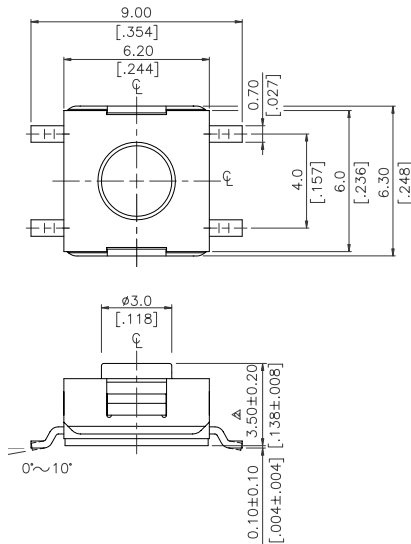
DTSMW-66



DTSMW-68

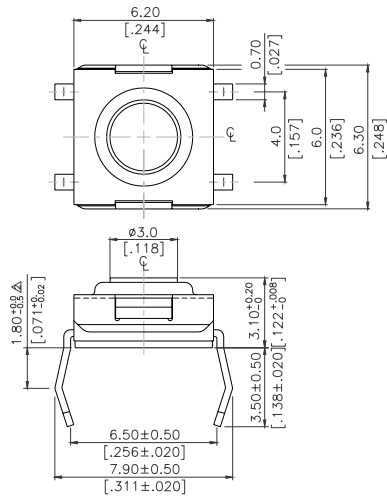


DTSMW-69,67,65

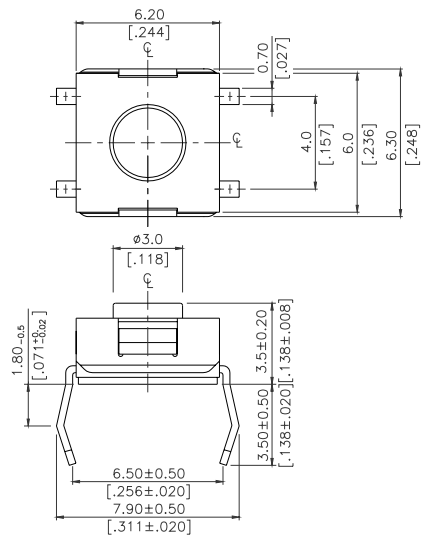


DIMENSIONS

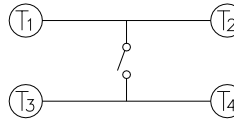
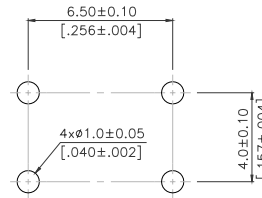
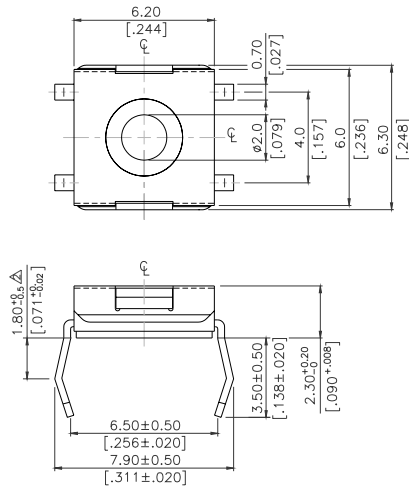
DTSHW-66



DTSHW-69,67,65



DTSHW-68



HOW TO ORDER

DTS- W - - -

Package Style:
B = Tube
T/R = Tape & Reel

Soldering
V=Lead Free

Color of Stem for Operating Force:
N = Brown, 160g (66N)
180gf (69N, 65N, 67N)
S = Silver, 160gf
R = Red, 260gf
T = Transparent, 360gf (69, 65, 67T)

Dimension H:
66 = 3.1mm (N)
68 = 2.3mm (S)
69 = 3.8mm (N,R,T)
67 = 5.2mm (N,R,T)
65 = 3.5mm (N,R,T)

H = Through Hole Terminals
M = Surface Mounting Terminals
GM = S.M.T & With Ground Terminal (For 66 Only)

SPECIFICATION

△ MECHANICAL

Operation Force:

- 360± 90gf, Transparent (T), DTSH(M)W – 69, 67, 65
- 260± 70gf Red (R), DTSH(M)W – 69,67,65
- 180± 50gf Brown (N), DTS(M)W – 69,67,65
- 160 ± 50gf Brown (N), DTS(M)W – 66, DTSGMW-66
- 160 ± 50gf Silver (S), DTSH(M)W – 68

Stop Strength: Max 3kgf vertical static load continuously for 15 seconds

Stroke: 0.25 +0.20 / - 0.1 mm 66N, 68S

0.6 ±0.2mm, 69, 65, 67T

0.45 ±0.2mm, 69, 67, 65N(R)

Operation Temperature: -25 ℃ to +70 ℃

Storage Temperature: -30 ℃ to +80 ℃

△ ELECTRICAL

Electrical Life:

500,000 cycles min. for DTS□W-69, 65, 67T

500,000 cycles min. for DTS□W-69, 67, 65N(R)

100,000 cycles min. for DTS□W-66N,68S, DTSGMW-66N

Rating: 50mA, 12VDC

Contact Resistance: 100MΩ max.

Insulation Resistance: 100MΩ min. at 500VDC

Dielectric Strength: 250VAC/ minute

Contact Arrangement: 1 pole 1 throw

MATERIALS

△ COVER: Stainless steel

△ CONTACT DISC: Phosphor bronze with silver cladding

△ TERMINAL: Brass with silver plated

△ BASE: UL94V-0 Nylon High-Temp. Thermoplastic
Color: Black

△ STEM: High-Temp Thermoplastic Nylon UL 94V-0 (66N)

△ ADHESIVE TAPE: Resin-based (66N, 68S)

△ METAL STEM: Brass with Nickel plated (66N, 68S)

△ SEALED RUBBER: Silicone Rubber (69, 67, 65)

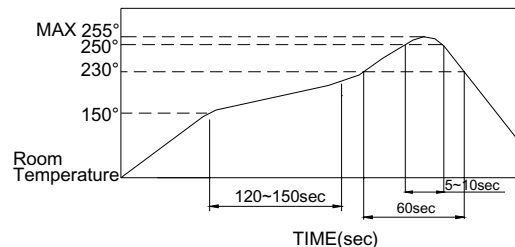
SOLDERING PROCESS

△ WAVE SOLDERING : Recommended solder temperature at 500 ℉ (260 ℃) max. 5 seconds subject to PCB 1.6mm thickness (soldering for through hole type)

△ HAND SOLDERING : Use a soldering iron of 30 watts, controlled at 350 ℃ approximately 5 seconds while applying solder.

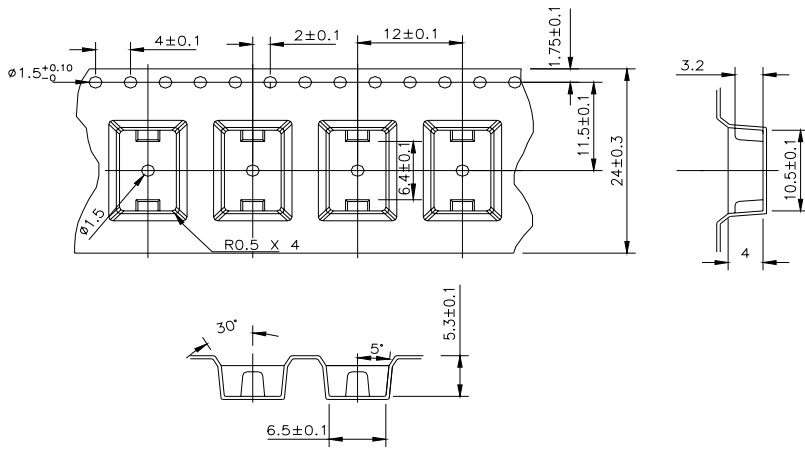
△ SOLDERING : Vapor phase & IR-reflow soldering can be applied

△ Temperature Profile:



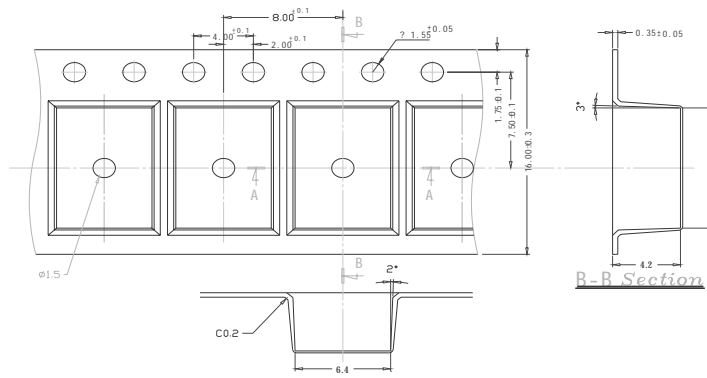
PACKING

DTSMW-67

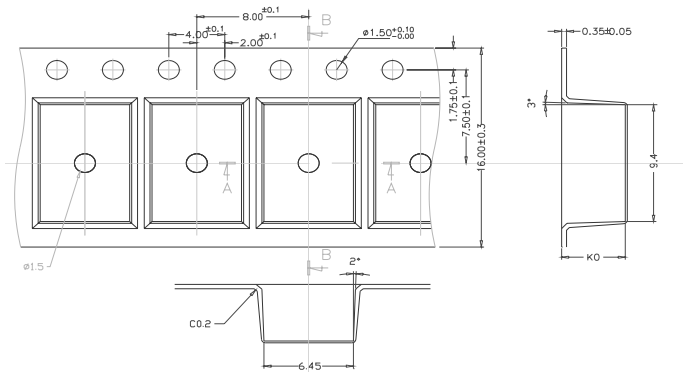


Part Number	Number Per Tube	Number Per Reel
DTSHW-6□	75	-
DTSGMW-66		2000
DTSMW-66	75	2000
DTSMW-68	75	2000
DTSMW-69	75	1900
DTSMW-65	75	1900
DTSMW-67	75	900

DTSMW-65,69



DTSMW-68, DTS(G)MW-66



DTSHW-66,68,69

