

Introducing the M12 range extension.



Reliable. Efficient. Connections.

M12 connectors are established as one of the most reliable and efficient connection standards for Industrial Machinery and Factory Automation applications. With a small footprint, extremely low failure rate and high performance capabilities, this range is ideal not only for sensor connections but also for various fieldbus systems.

PVC or PUR

Overmolded PVC or PUR

3 – 17

Pole Variants

A/L/S/T/X

Coded Versions

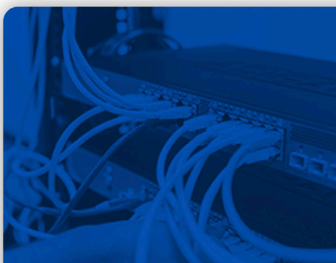
IP67

Protection Rating

Why buy it?

With a high degree of mechanical and electrical stability, our M12 connectors and cables provide a cost effective and flexible plug & play connectivity solution for onsite installations, helping to decrease downtime in process control, manufacturing automation and industrial instrumentation applications.

Industry Applications:



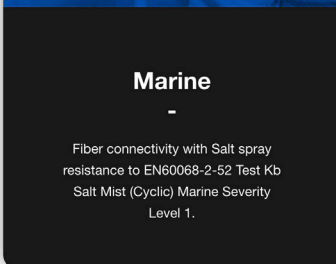
Server Rooms

A choice of cable terminations from standard server room LC fiber connections to sealed connections.



FTTx

A fiber connector with IP68 ratings and UV resistant materials, the 4000 series fiber is suited to last drop Fiber to the home and the antenna.



Marine

Fiber connectivity with Salt spray resistance to EN60068-2-52 Test Kb Salt Mist (Cyclic) Marine Severity Level 1.



Civil Engineering

Reliably connecting sensing equipment in the field in the harshest of environments



Technical Specifications:

Series	Material	Size	Body Styles	Orientation	Contacts	Code	Termination	Mounting / Gland Nut	Lead Length	Cable Material
PXM	BNI =	12	FB = Flex Body	M	03	A	ST =		001	PUR
PXP	Brass Nickel		FI =	F	04	B	Screw	PG9	002	PVC
	PAM =		Flex Inline Body		05	D	Terminal	PG7	003	
	Polyamide		RP =	T-Split =	06	L	PC = PCB	M16	006	
	TPU =		Rear Panel	MM	08	S	CL = Cable	M12	010	
	Overmold		Mounting	MF	12	T	SC = Solder		020	
	for PUR		RA =		17	X	FI =	FFL =	030	
	PVC =		Right Angle				Flex In-Line	Fixed Flange	050	
	Overmold		SC =				FL =		100	
	for PVC		Sealing Cap				Flying Lead		150	
	PNP =		FP =				T-Splitter =			
	+ Signal		Front Panel				FIIFI			
	LED		Mounting				FBIFB			
	NPN =		TS = T-Splitter				FBBFB			
	- Signal		FL = Flange							
	LED		SM =							
	LCP =		Surface Mount							
	Liquid									
	Crystal									
	Polymer									

Key Selling Points:

- Reliable Industry Standard (EN 61076-2-101) Screw Locking Mechanism
- IP67 Degree of Protection
- A, B, D, L, S, T & X Coded Versions
- Field Installable, Cable and Panel Mount Options
- Plastic and Metal Option Variants
- Straight and Right Angled Forms
- Overmolded PVC, PUR, PNP or NPN Cable Connectors
- Pole Variants from 3 – 17