



(<https://www.dfrobot.com/product-572.html>)

## Introduction

---

This is an edge detection sensor from DFRobot. It will help your robot detect the edge of a precipice, preventing it from falling off a table or down the stairs to its certain demise! This IR distance sensor is connected to an arduino digital pin.

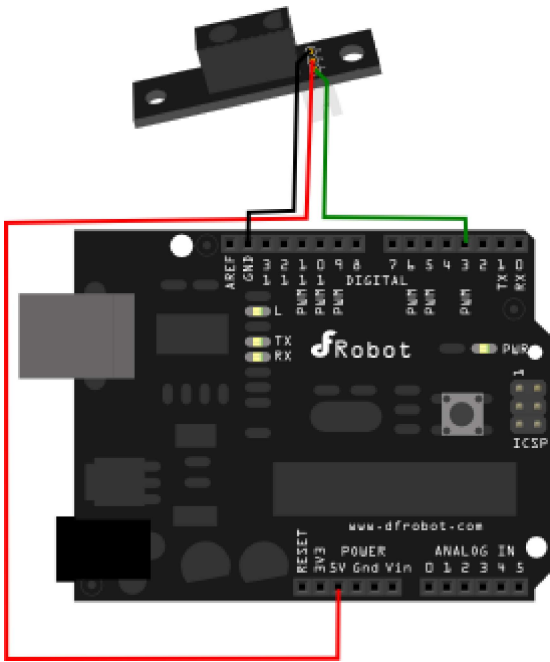
## Applications

- Edge detection sensor
- Intelligent Mobile Robotics Platforms
- Home Cleaning Robots

## Specification

- Supply Voltage: 2.7~6.2v
- Current: < 10mA
- Range distance: 2~10cm (Low), <2cm or >10cm (High)
- Interface:1 digital pin
- Signal Voltage: Vcc-0.6V(High), 0.6V(Low)
- Size: 36.0x10.0x15.0 mm
- Weight: < 5g

## Connection Diagram



## Sample Code

```
void setup(){
  Serial.begin(9600);
}

void loop(){
  Serial.print("Digital Signal:");
  Serial.println(digitalRead(3),BIN);
  delay(50);
}
```

## More Documents

- Schematic  
([https://github.com/DFRobot/Wiki/raw/master/SEN0042/res/SEN0042%20\(V2.0\)%20Schematic.pdf](https://github.com/DFRobot/Wiki/raw/master/SEN0042/res/SEN0042%20(V2.0)%20Schematic.pdf))
- Layout & Dimension  
([https://github.com/DFRobot/Wiki/raw/master/SEN0042/res/SEN0042%20\(V2.0\)%20Layout%20with%20dimension.pdf](https://github.com/DFRobot/Wiki/raw/master/SEN0042/res/SEN0042%20(V2.0)%20Layout%20with%20dimension.pdf))
- Sharp GP2Y0D810Z0F datasheet  
(<https://github.com/DFRobot/Wiki/raw/master/SEN0042/res/GP2Y0D810Z0F-datasheet-EN.pdf>)



Get DFRobot Infrared sensor (<https://www.dfrobot.com/index.php?>

route=product/category&path=36\_55) from DFRobot Store or **DFRobot Distributor**.  
(<https://www.dfrobot.com/index.php?route=information/distributorslogo>)

**Turn to the Top**