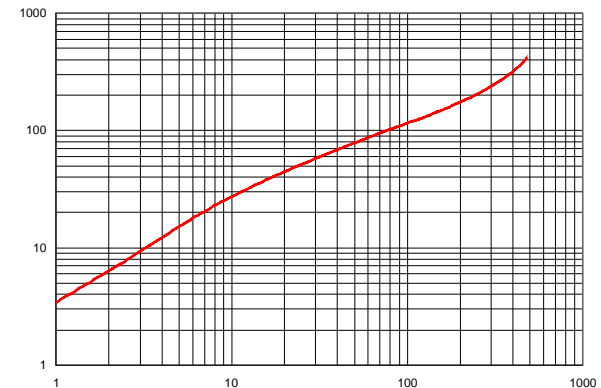


NOTES: UNLESS OTHERWISE SPECIFIED

1. COSMETIC SPECIFICATION REFER TO WI-QA-038.

IMPEDANCE ( Z )			
Frequency	25 MHz	100 MHz	300 MHz
Nominal (REF)	52 Ω	116 Ω	235 Ω
Minimum	- Ω	93 Ω	- Ω

Z vs. FREQUENCY  
(REF. ONLY)

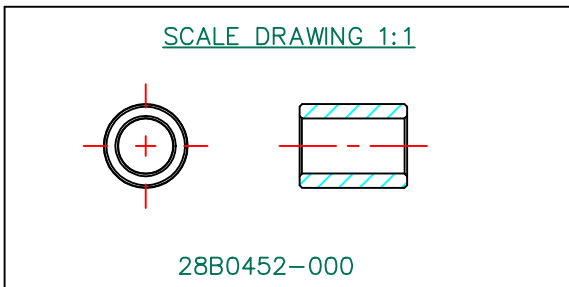


FREQUENCY (MHz)  
AGILENT E4991A Impedance/Material Analyzer  
HP 16092A Test Fixture, REF

FERRITE CORE DIMENSIONS (SPEC): mm [in]

A	11.70 [.4606]	+	0.30 [.012]
B	7.70 [.303]	+	0.20 [.008]
C	15.00 [.590]	+	0.50 [.020]

WEIGHT/1000 4.49 kgs [9.89 Lbs]



DIMENSIONS ARE IN mm [INCHES].				This print is the property of Laird Tech. and is loaned in confidence subject to return upon request and with the understanding that no copies shall be made without the written consent of Laird Tech. All rights to design or invention are reserved.			
				PROJECT/PART NUMBER:	REV	PART TYPE:	DRAWN BY:
D	UPDATE COMPANY LOGO ADD NOTE	11/29/17	QIU	28B0452-000	D	FERRITE CORE	JRK
C	UPDATE COMPANY LOGO ADD Z SPECS	08/12/08	JRK	DATE:	SCALE:	MATERIAL:	
B	CHANGE A AND B DIMS UPDATE WGT.	11/20/07	JRK	11/09/07	3 : 1	FERRITE	
A	ORIGINAL DRAFT	11/09/07	JRK	CAD #	TOOL #		
REV	DESCRIPTION	DATE	INT	28B0452-000-D	B0452		