

TASCAM

US-1x2HR

USB Audio Interface

OWNER'S MANUAL

Introduction

Thank you for your purchase of the TASCAM US-1x2HR USB Audio Interface. Before connecting and using this unit, please take time to read this manual thoroughly to ensure you understand how to properly set it up and connect it, as well as how to use its many useful and convenient functions. After you have finished reading this manual, please keep it in a safe place for future reference.

You can also download this Owner's Manual from the TEAC Global Site (<https://teac-global.com/>).

Before connecting this unit to a computer, you must download and install a dedicated driver.

Note about the Reference Manual

This Owner's Manual explains each of the functions of this unit. Please see the Reference Manual for detailed information about each of the functions. You can download the Reference Manual from the TEAC Global Site (<https://teac-global.com/>).

- Included items**
- This product includes the following items.
- Take care when opening the package to avoid damaging the items. Keep the packing materials for transportation in the future.
- Please contact the store where you purchased this unit if any of these items are missing or have been damaged during transportation.
- Main unit.....x 1
 - USB cables (Type-A to Type-C).....x 1
 - Set of DAW software installation guides.....x 1
 - Set of DAW plug-in software installation guides.....x 1
 - Owner's Manual (this document) including warranty.....x 1

IMPORTANT SAFETY INSTRUCTIONS

WARNING: TO PREVENT FIRE OR SHOCK HAZARD, DO NOT EXPOSE THIS APPLIANCE TO RAIN OR MOISTURE.

For U.S.A

Supplier's Declaration of Conformity

Model Name: US-1x2HR
Trade Name: TASCAM
Responsible party: TEAC AMERICA, INC.
Address: 10410 Pioneer Blvd. Suite #1 Santa Fe Springs, California 90670, U.S.A.
Telephone number: 1-323-726-0303

This device complies with Part 15 of the FCC Rules. Operation is subject to the following two conditions: (1) This device may not cause harmful interference, and (2) this device must accept any interference received, including interference that may cause undesired operation.

INFORMATION TO THE USER

This equipment has been tested and found to comply with the limits for a Class B digital device, pursuant to Part 15 of the FCC Rules. These limits are designed to provide reasonable protection against harmful interference in a residential installation. This equipment generates, uses, and can radiate radio frequency energy and, if not installed and used in accordance with the instruction manual, may cause harmful interference to radio communications. However, there is no guarantee that interference will not occur in a particular installation. If this equipment does cause harmful interference to radio or television reception, which can be determined by turning the equipment off and on, the user is encouraged to try to correct the interference by one or more of the following measures.

- Reorient or relocate the receiving antenna.
- Increase the separation between the equipment and receiver.
- Connect the equipment into an outlet on a circuit different from that to which the receiver is connected.
- Consult the dealer or an experienced radio/TV technician for help.

CAUTION

Changes or modifications to this equipment not expressly approved by TEAC CORPORATION for compliance could void the user's authority to operate this equipment.

For Canada

THIS CLASS B DIGITAL APPARATUS COMPLIES WITH CANADIAN ICES-003. CET APPAREIL NUMÉRIQUE DE LA CLASSE B EST CONFORME À LA NORME NMB-003 DU CANADA.

This product complies with the European Directives request and the other Commission Regulations.

- Read these instructions.
 - Keep these instructions.
 - Heed all warnings.
 - Follow all instructions.
 - Do not use this apparatus near water.
 - Clean only with dry cloth.
 - Do not block any ventilation openings. Install in accordance with the manufacturer's instructions.
 - Do not install near any heat sources such as radiators, heat registers, stoves, or other apparatus (including amplifiers) that produce heat.
 - Do not defeat the safety purpose of the polarized or grounding-type plug. A polarized plug has two blades with one wider than the other. A grounding type plug has two blades and a third grounding prong. The wide blade or the third prong are provided for your safety. If the provided plug does not fit into your outlet, consult an electrician for replacement of the obsolete outlet.
 - Protect the power cord from being walked on or pinched particularly at plugs, convenience receptacles, and the point where they exit from the apparatus.
 - Only use attachments/accessories specified by the manufacturer.
 - Use only with the cart, stand, tripod, bracket, or table specified by the manufacturer, or sold with the apparatus. When a cart is used, use caution when moving the cart/appliances combination to avoid injury from tip-over.
 - Unplug this apparatus during lightning storms or when unused for long periods of time.
 - Refer all servicing to qualified service personnel. Servicing is required when the apparatus has been damaged in any way, such as power-supply cord or plug is damaged, liquid has been spilled or objects have fallen into the apparatus, the apparatus has been exposed to rain or moisture, does not operate normally, or has been dropped or repaired.
- The apparatus draws nominal non-operating power from the AC outlet with its POWER or STANDBY/ON switch not in the ON position.
 - The mains plug is used as the disconnect device, the disconnect device shall remain readily operable.
 - Caution should be taken when using earphones or headphones with the product because excessive sound pressure (volume) from earphones or headphones can cause hearing loss.
 - If you are experiencing problems with this product, contact TEAC for a service referral. Do not use the product until it has been repaired.

WARNING

- To prevent possible hearing damage, do not listen at high volume levels for long periods

- CAUTION**
- Do not expose this apparatus to drips or splashes.
 - Do not place any objects filled with liquids, such as vases, on the apparatus.
 - Do not install this apparatus in a confined space such as a book case or similar unit.
 - The apparatus should be located close enough to the AC outlet so that you can easily grasp the power cord plug at any time.
 - If the product uses batteries (including a battery pack or installed batteries), they should not be exposed to sunshine, fire or excessive heat.
 - CAUTION for products that use replaceable lithium batteries: there is danger of explosion if a battery is replaced with an incorrect type of battery. Replace only with the same or equivalent type.

For European Customers

Disposal of electrical and electronic equipment

(a) All electrical and electronic equipment should be disposed of separately from the municipal waste stream via designated collection facilities appointed by the government or the local authorities.

(b) By disposing of the electrical and electronic equipment correctly, you will help save valuable resources and prevent any potential negative effects on human health and the environment.

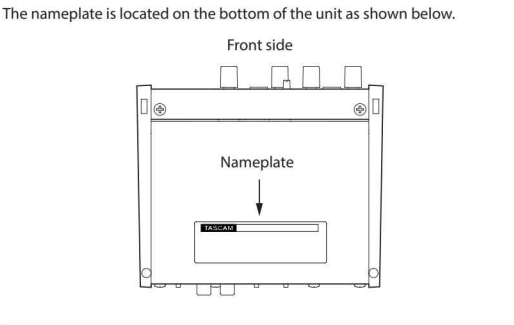
(c) Improper disposal of waste equipment can have serious effects on the environment and human health as a result of the presence of hazardous substances in electrical and electronic equipment.

(d) The crossed out wheeled dust bin symbol indicates that electrical and electronic equipment must be collected and disposed of separately from household waste.

(e) The return and collection systems are available to the end users.

For more detailed information about disposal of old electrical and electronic equipment, please contact your city office, waste disposal service or the shop where you purchased the equipment.

- CAUTION**
- DO NOT REMOVE THE EXTERNAL CASES OR CABINETS TO EXPOSE THE ELECTRONICS. NO USER SERVICEABLE PARTS ARE HEREIN.
 - IF YOU ARE EXPERIENCING PROBLEMS WITH THIS PRODUCT, CONTACT THE STORE WHERE YOU PURCHASED THE UNIT FOR A SERVICE REFERRAL. DO NOT USE THE PRODUCT UNTIL IT HAS BEEN REPAIRED.
 - USE OF CONTROLS OR ADJUSTMENTS OR PERFORMANCE OF PROCEDURES OTHER THAN THOSE SPECIFIED HEREIN MAY RESULT IN HAZARDOUS RADIATION EXPOSURE



Conventions used in this manual

In this manual, we use the following conventions:

- Information shown on a computer display is written like this: "OK".
- References to "iOS" in this document also include "iPad OS".
- As necessary, additional information is provided under TIP, NOTE and CAUTION headings.

TIP

These are tips about how to use the unit.

NOTE

These provide additional explanations and describe special cases.

ATTENTION

Failure to follow these instructions could result in damage to equipment or loss of data, for example.

CAUTION

Failure to follow these instructions could result in injury.

Trademarks

- TASCAM is a registered trademark of TEAC Corporation.
- Microsoft and Windows are either registered trademarks or trademarks of Microsoft Corporation in the United States and/or other countries.
- Apple, Mac, macOS, iOS, iPadOS, iPad and iPod touch are trademarks of Apple Inc. in the United States and other countries.
- Lightning is a trademark of Apple Inc.
- App Store is a service mark of Apple Inc.
- iOS is a trademark or registered trademark of Cisco in the U.S. and other countries and is used under license.
- ASIO is a trademark of Steinberg Media Technologies GmbH.



Other company names, product names and logos in this document are the trademarks or registered trademarks of their respective owners.

- Precautions for placement and use**
- The operating temperature range of this unit is 5–35 °C.
 - Do not install this unit in the following types of locations. Doing so could make the sound quality worse or cause malfunction.
 - Places with significant temperature changes.
 - Next to a window or in another location exposed to direct sunlight.
 - Near heaters or other extremely hot places.
 - Extremely cold places.
 - Very humid or poorly ventilated places.
 - Very dusty places.
 - To enable good heat dissipation, do not place anything on top of the unit.
 - Do not place this unit on top of a power amplifier or other device that generates heat.

Beware of condensation

Condensation could occur if the unit is moved from a cold place to a warm place, it is used immediately after a cold room has been heated or it is otherwise exposed to a sudden temperature change.

To prevent this, if this occurs, let the unit sit for one or two hours at the new room temperature before using it.

Cleaning the unit

Use a dry soft cloth to wipe the unit clean. Do not wipe with chemical cleaning cloths, thinner, alcohol or other chemical agents. Doing so could damage the surface or cause discoloration.

Using the TEAC Global Site

You can download updates for this unit from the TEAC Global Site: <https://teac-global.com/>

In the TASCAM Downloads section, select the desired language to open the Downloads website page for that language.

Product registration

Customers in the USA, please visit the following TASCAM website to register your TASCAM product online. <https://tascam.com/us/>

About TASCAM customer support service

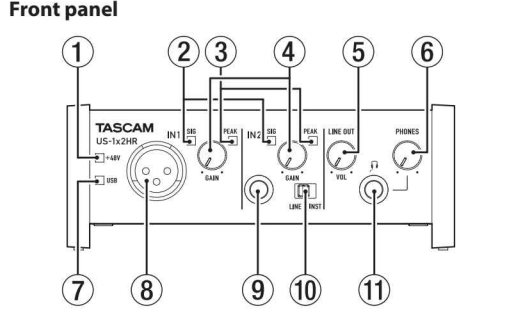
TASCAM products are supported and warranted only in their country/region of purchase.

To receive support after purchase, on the TASCAM Distributors list page of the TEAC Global Site (<https://teac-global.com/>), search for the local company or representative for the region where you purchased the product and contact that organization.

When making inquiries, the address (URL) of the shop or web shop where it was purchased and the purchase date are required.

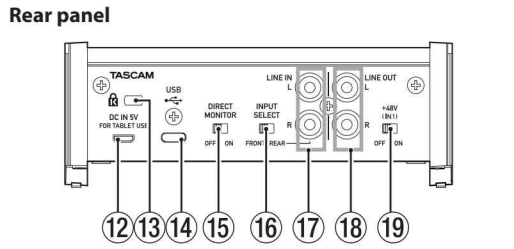
Moreover, the warranty card and proof of purchase might also be necessary.

Names and functions of parts



- PHANTOM indicator**
The indicator lights when the phantom power switch (18) of the rear panel is set to "ON".
- SIG indicators**
The SIG indicators light green when signals (of at least –32 dBFS) are input through the IN1/IN2/LINE IN L-R jacks (8/9/10).
- PEAK indicators**
The PEAK indicators light red when signals that are about to distort (–1 dBFS or higher) are input through the IN1/IN2/LINE IN L-R jacks (8/9/10).
- GAIN knobs**
Use to adjust the input levels of the IN1/IN2 jacks (8/9).
- LINE OUT knob**
Use to adjust the output level of the LINE OUT L-R jacks (11).
- PHONES knob**
Use to adjust the output level of the PHONES jack (12).

- CAUTION**
- Before connecting headphones, minimize the volume with the PHONES knob. Failure to do so could result in a sudden loud noise that could harm hearing, for example.
- DC IN 5V connector (Micro USB type)**
When connected to an iOS device or other equipment that cannot power this unit, you must use a USB power adapter, mobile battery or other power supply. See "When using an iOS device" for details.
 - Kensington Security Slot**
 - USB port**
This is a USB Type-C port.
 - DIRECT MONITOR switch**
Turning this switch ON enables the Settings Panel Monitor Balance slider and input monitoring without delay (direct monitoring).
 - INPUT SELECT switch**
Set according to the input sources.
 - LINE IN L-R jacks**
These RCA pin jacks are analog line inputs.
 - LINE OUT L-R jacks**
These RCA pin jacks are analog line outputs.
 - Phantom power switch**
Use this switch to provide +48V phantom power to the IN1 jack (8).



- DC IN 5V connector (Micro USB type)**
When connected to an iOS device or other equipment that cannot power this unit, you must use a USB power adapter, mobile battery or other power supply. See "When using an iOS device" for details.
- Kensington Security Slot**
- USB port**
This is a USB Type-C port.
- DIRECT MONITOR switch**
Turning this switch ON enables the Settings Panel Monitor Balance slider and input monitoring without delay (direct monitoring).
- INPUT SELECT switch**
Set according to the input sources.
- LINE IN L-R jacks**
These RCA pin jacks are analog line inputs.
- LINE OUT L-R jacks**
These RCA pin jacks are analog line outputs.
- Phantom power switch**
Use this switch to provide +48V phantom power to the IN1 jack (8).

Installing the dedicated software

To use this unit, a dedicated software must be installed on a computer. The dedicated software might be updated at any time.

Download the latest software for the operating system you are using from the TEAC Global Site (<https://teac-global.com/>).

- When you install the dedicated software on a Windows computer, the Windows driver and the Settings Panel application will be installed.
- When you install the dedicated software on a Mac, only the Mac Settings Panel application will be installed. The standard OS driver will be used to power the unit.
- With an iOS device, the standard OS driver will be used, so there is no need to install any.

ATTENTION

Before starting to install software, quit other applications.

Installing the Windows dedicated software

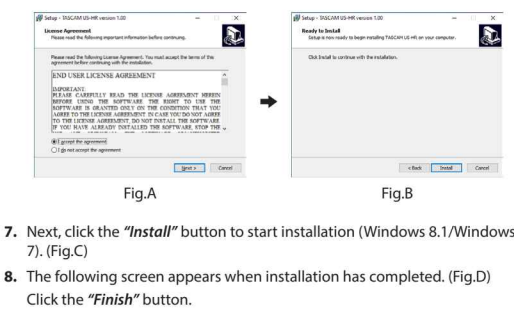
ATTENTION

- Complete installation of the Windows dedicated software on the computer before connecting the unit to it with the USB cable.
- If you connected the unit to the computer using the USB cable before installing the Windows dedicated software and the "Found New Hardware Wizard" launched, close the Wizard and disconnect the USB cable.

Windows dedicated software installation procedures

- Download the latest Windows dedicated software from the TEAC Global Site (<https://teac-global.com/>) and save it on the computer to be used with this unit.
- Uncompress the saved software (zip file) on the computer desktop or another location.
- Double-click the "TASCAM_US-HR_Installer_*.x.exe" file in the folder that appears after uncompression to automatically launch the installation software.

- ATTENTION**
- If you open a zip file without decompressing it and doubleclick the "TASCAM_US-HR_Installer_*.x.exe" file in the folder that opens, installation will not start. Right-click the zip file and select "Extract All", for example, to decompress it and then try again.
- When a "Security Warning" or "User Account Control" screens appears, click the "Yes" button.
 - Read the contents of the User License Agreement, and select "I accept the agreement" if you agree to the terms. Then, click the "Next" button. (Fig.A)
 - Next, click the "Install" button. (Fig.B)



The installer will quit and the Windows Settings Panel will launch.

NOTE

The first time you connect the unit by USB to the computer after installing the software, installation of the device driver will be executed. Some time might be necessary before the unit is recognized because Windows Update will be automatically searched at this time.

If the unit is still not recognized after a while, open the software installation screen from the notification area at the bottom right of the computer display, and click "Skip obtaining driver software from Windows Update" to stop the search.

Installing the Mac dedicated software

NOTE

- Install the Mac dedicated software on the computer before connecting the unit to it with the USB cable.
- Depending on the Gatekeeper setting, a warning message might appear during installation. For information about Gatekeeper, Please see "Working with Gatekeeper" in "3-Installation" of the Reference Manual.

Mac dedicated software installation procedures

- Download the latest Mac dedicated software for the operating system you are using from the TEAC Global Site (<https://teac-global.com/>) and save it on the computer to be used with the unit.
- Double-click "US-HR_Installer_*.x.dmg", which is the saved disk image file for the Mac dedicated software, and double-click "US-HR_Installer_*.pkg" inside the folder that opens. (Fig.A)

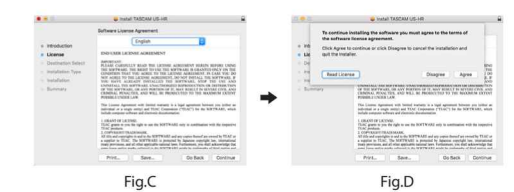
NOTE

Depending on the computer's settings, the downloaded zip file might not have been uncompressed automatically. In this case, uncompress the zip file first and then double-click the disk image file.

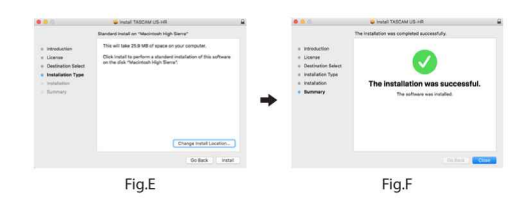
- When the installer starts, click the "Continue" button. (Fig.B)



- Next, select the desired language and click the "Continue" button. (Fig.C)
- Click the "Read License" button and check the contents of the Software License Agreement. If you agree to the contents of the license, click "Agree". (Fig.D)



- Next, click the "Install" button to start installation. (Fig.E)
- The following screen appears when installation has completed. Click the "Close" button. (Fig.F)



Connecting the power

When using a computer (Windows/Mac)

When this unit is connected to a computer using an included USB cable, it will operate using USB bus power, so connecting a separate power supply device is not necessary.

When using an iOS device

When this unit is connected to an iOS device, connecting an external battery, USB power adapter or other power supply device is necessary in order to power the unit.

Connect an AC adapter (TASCAM PS-PS20E), external battery pack (TASCAM BP-6AA) or the genuine Apple USB power adapter included with the iPad/iPhone to a USB cable (sold separately), and connect it to the DC IN 5V port (12).

ATTENTION

- Provide power through the DC IN 5V connector before connecting an iPad/iPhone by USB.
- No USB power adapter is included with an iPod touch. To use it with an iPod touch, purchase a genuine Apple USB power adapter (that can supply 5 V and a current of at least 700 mA) separately.
- Operation with other external battery packs and USB power adapters is possible, but we strongly recommend using a TASCAM PS-PS20E AC adapter, TASCAM BP-6AA external battery pack or the genuine Apple USB power adapter included with the iPad/iPhone.

When using another external battery pack or USB power adapter, be sure that the power supply device meets the following specifications.

- Supplied voltage: 5 V
- Supplied current: 700 mA or more

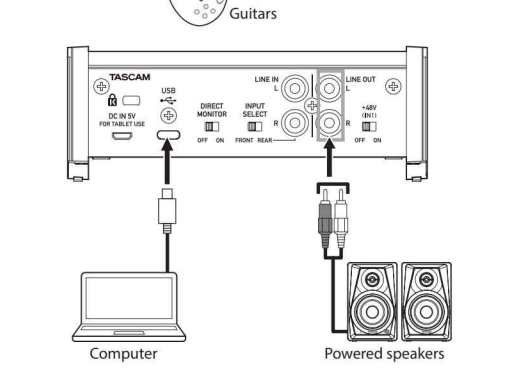
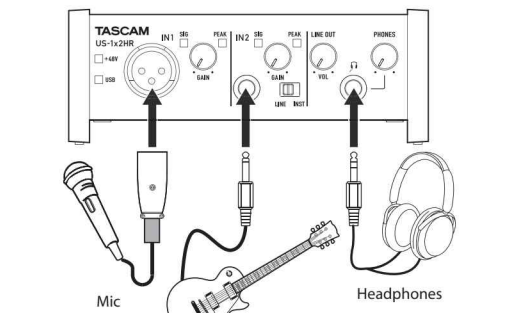
Using a power supply device when the specifications are other than the above could cause malfunction, overheating, fire or other problems. If anything abnormal occurs, stop use and contact the retailer where you purchased the unit or a TEAC service center to request repair.

Connecting other equipment

This is an example of US-1x2HR connections.

Precautions before making connections

- Carefully read the operation manuals of the devices to be connected and then connect them correctly.
- Before making connections, turn this unit and all equipment to be connected off (standby).
- Install all connected devices, including this unit, so that they are powered from the same line. When using a power strip or similar device, be sure to use one that has high current capacity (thick cable) in order to minimize fluctuations in power voltage.



CAUTION

Lower the LINE OUT and PHONES knobs before changing the phantom power switch between ON/OFF. Depending on the connected mic's sudden loud noises from monitoring equipment could occur, and this could damage the equipment or harm hearing.

- ATTENTION**
- Before connecting condenser mics, turn this unit and all equipment to be connected off (standby).
 - Do not turn phantom power on when connecting a mic that does not require phantom power.
 - Do not connect or disconnect mics while the phantom power switch is set to ON. Doing so could cause a loud noise and might damage this unit and connected equipment.
 - Set the phantom power switch to ON only when using a condenser microphone that requires phantom power. Setting phantom power to ON when a dynamic mic or other equipment that does not require it is connected could damage this unit and the connected equipment.
 - Supplying phantom power to some ribbon mics could break them. If you are unsure, do not supply phantom power to a ribbon mic.
 - If you connect this unit to a laptop computer that is running on battery power and set the phantom power switch to ON, the computer battery charge will be consumed more quickly.

Connecting with iOS devices

To connect with an iOS device that has a Lightning connector use a Lightning to USB Camera Adapter* and the USB cable included with this product. To connect with an iOS device that has a USB Type-C connector, use a commercially-available Type-C–Type-C cable.

* You must obtain a genuine Apple Lightning to USB Camera Adapter separately.

NOTE

When connected, this unit will not provide power to the iOS device.

Making various settings

In order to enable the computer to handle digital audio signals smoothly, other loads on the computer should be minimized as much as possible. We recommend that you quit unnecessary applications before use.

Opening the Settings Panel

Open the Settings Panel in the following manner.

- Windows**
- From the Start menu select "US_HR SettingsPanel" under "TASCAM".
- Mac**
- On the Launchpad, click "US-HR_SettingsPanel".
 - Using the Finder, open the Applications folder and double-click "US-HR_SettingsPanel" to open the Settings Panel.

Using the Settings Panel



- IN 1-2 buttons**
Set the monitoring signal from the IN1/IN2/LINE IN L-R jacks (8/9/10) to "Monitor" or "Stereo".
- Monitor Balance slider**
When the DIRECT MONITOR switch on the back of the unit is ON, use this to adjust the monitoring balance between the input signals from the input jacks and the output signals from the computer.
- Audio Input ON switches**
Turn input on/off for each input separately.

For details about other settings, see "Settings Panel screen" in "5 – Using the Settings Panel" of the Reference Manual.

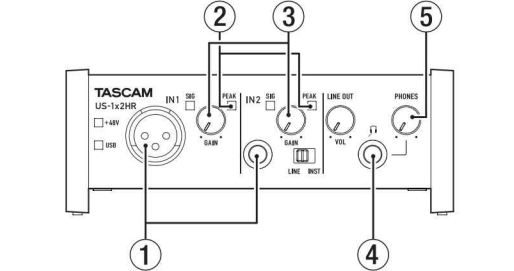
Adjusting the input sound

Analog audio signals input into this device from mics, guitars, keyboards and other audio equipment can be converted into digital signals and transmitted to the computer via USB.

You can use the features of this unit to adjust the digital signals that are sent to the computer.

In addition, by connecting speakers (through an amplifier if not powered) or headphones to this unit, you can monitor audio signals that are input to this unit and output from the computer.

Use the various controls on the front of the unit as necessary while listening to the input sound.



Use the GAIN knobs (3) to adjust the analog input levels of the IN1/IN2 jacks (1) so that the PEAK indicators (2) above and to the right of the GAIN knobs do not light.

To listen to the monitoring signal using headphones, connect headphones to a PHONES jack (4) and adjust the PHONES knob (5).

CAUTION

Before connecting headphones, minimize the volume with the PHONES knob. Failure to do so could result in a sudden loud noise that could harm hearing, for example.

- NOTE**
- If the input sound cannot be heard output through the PHONES or the LINE OUT L-R jacks, check the Monitor Balance and IO Settings items on the Settings Panel screen.
 - Confirm that the DIRECT MONITOR switch is set to ON.

Troubleshooting

Please read this chapter if you are unable to use the unit properly even after setting it up following the procedures in this manual.

If you are still unable to resolve your problems please contact TASCAM customer support with the following information about the operating environment and details about the trouble.

Operating environment

- Computer manufacturer:
- Model:
- CPU:
- Memory (RAM):
- Operating system:
- Applications used:
- Antivirus software:
- Wireless LAN use:

If these measures do not resolve the issue, please contact the retailer where you purchased this unit or a TEAC service center.

See the back of this manual for contact information.

The dedicated software cannot be installed

- Check the operating system
- Stop software running in the background
- Antivirus software and other software that runs in the background can prevent installation. Quit software that runs in the background and try installation again.

The unit is connected, but the computer does not recognize it

- Install the dedicated software
 - If you have not done so, install the dedicated software. Please refer to "Installing the dedicated software" in this manual.
- Change the USB port
 - This unit cannot be used with USB 1.1. Use a port that supports at least USB 2.0 or USB 3.0.
 - Do not use a USB hub with this unit. Always connect the unit directly to a USB port on the computer.
 - If the above methods do not resolve the problem, connect the unit to a different USB port on the computer.

I cannot hear any sound even when audio is played back on the computer

Check the status of the unit's connection with the computer.

Moreover, if you make the following settings, sound will be output through this unit, but no sound will be output by the computer's speakers or headphone jack.

Windows

See the "Windows" section of "6 – Application Guide" in the Reference Manual, and make settings according to the OS.

- Mac**
- Quit all applications and open "System Preferences..." from the Apple menu.
 - Open "Sound".
 - On the **Output** tab, select "US-1x2 HR".

After completing the setting, restart the computer and check the sound of playback.

Depending on the application that you are using, you might need to make additional device settings.

In particular, DAW software operate using audio engines with settings that are different from the OS settings, so confirm the DAW settings first after installing the dedicated software for this unit.

Please see the manuals for the applications that you are using for detailed setting procedures.

Sound breaks up or there is noise

The processing load on the computer causes sound to break up and noise to occur.

- Here are some methods to reduce the load on the computer.
- A wireless LAN and software running in the background, including antivirus software, regularly put processing loads on the computer, which can cause sound to break up and other noise.
 - Stop wireless LAN transmission, antivirus software and other software running in the background when using this unit.
 - Set the buffer size (latency) in the audio application that you are using or in this unit's Settings Panel to a larger value (Windows only).

- NOTE**
- Consult the maker of the audio application that you are using for methods to reduce its load on your computer.
- Change the settings of your computer so that they are optimal for audio processing.
 - Using Windows**
 - Open the Control Panel using the appropriate method for the OS you are using (Windows 10/Windows 8.1/Windows 7).
 - In Windows 10, open the "Control Panel". Then, click the "System" icon.
 - In Windows 8.1, right-click the ordinary Start screen (Metro user interface screen) and then click "All apps". Then, right-click "Computer" and select "Properties".
 - In Windows 7, right-click "Computer" from the Windows Start button, and select "Properties".
 - Click "Advanced system settings".
 - Click "Settings" in the "Performance" section of the "Advanced" tab of the "System Properties" window.
 - In the "Visual Effects" tab of the "Performance Options" window, select "Adjust for best performance".
 - Using Mac**
 - Open "System Preferences..." from the Apple menu, and select "Energy Saver".
 - Set "Computer sleep" to "Never".
 - Set "Display sleep" to "Never".

Depending on the macOS version and Mac computer model, this setting might not be available.

- Connect to a different USB port.
- Since the unit might not properly function with some USB ports, try connecting it to a different USB port.

NOTE

- Try again after disconnecting other USB devices (Keyboards and mice can be left connected).
- Do not use a USB hub. Always connect the unit directly to a USB port on the computer (built-in).

Support for bundled software, including DAW software

TASCAM does not provide end-user support for the bundled DAW Software. Please check the Help menu of the installed software to find where this support is available.

Specifications

General

Sampling frequencies
44.1, 48, 88.2, 96, 176.4, 192 kHz

Quantization bit depth
24-bit

Analog inputs

IN1 input

Mic input (Balanced)
Connector: XLR-3-31 equivalent (1: GND, 2: HOT, 3: COLD)
Maximum input level: +9 dBu (2.183 Vrms)
Rated input level: –7 dBu (0.346 Vrms)
Gain range: 56 dB
Input impedance: 2.4 kΩ

IN2 input

LINE input (Balanced)
(LINE/INST switch set to LINE)
Connector: 6.3mm (1/4") standard TRS jack
(Tip: HOT, Ring: COLD, Sleeve: GND)
Maximum input level: +20 dBu (7.750 Vrms)
Rated input level: +4 dBu (1.228 Vrms)
Gain range: 45dB
Input impedance: 10 kΩ

INST input (Unbalanced)
(LINE/INST switch set to INST)
Connectors: 6.3mm (1/4") standard TS jacks (Tip: HOT, Sleeve: GND)
Maximum input level: +3dBV (1.413Vrms)
Rated input level: –13 dBV (0.224 Vrms)
Gain range: 45dB
Input impedance: 1 MΩ or more

LINE L/R inputs (Unbalanced)
Connectors: RCA pin jacks
Maximum input level: +6 dBV (1.995 Vrms)
Rated input level: –10 dBV (0.316 Vrms)
Input impedance: 10 kΩ

Analog outputs

LINE OUT L-R outputs (Unbalanced)
Connector: RCA pin jacks
Maximum output level: +6 dBV (1.995 Vrms)
Rated output level: –10 dBV (0.316 Vrms)
Output impedance: 100 Ω

Headphones output (PHONES)
Connector: 6.3 mm (1/4") standard stereo jack
Maximum output: 18 mW + 18 mW or higher
(THD+N 0.1% or less, into 32 Ω load)

Control input/output ratings

USB
Connector: 4-pin USB Type-C
Transfer rate: USB 2.0 High Speed (480 Mbps)

DC IN 5V
Connector: USB Micro B type

Audio performance

