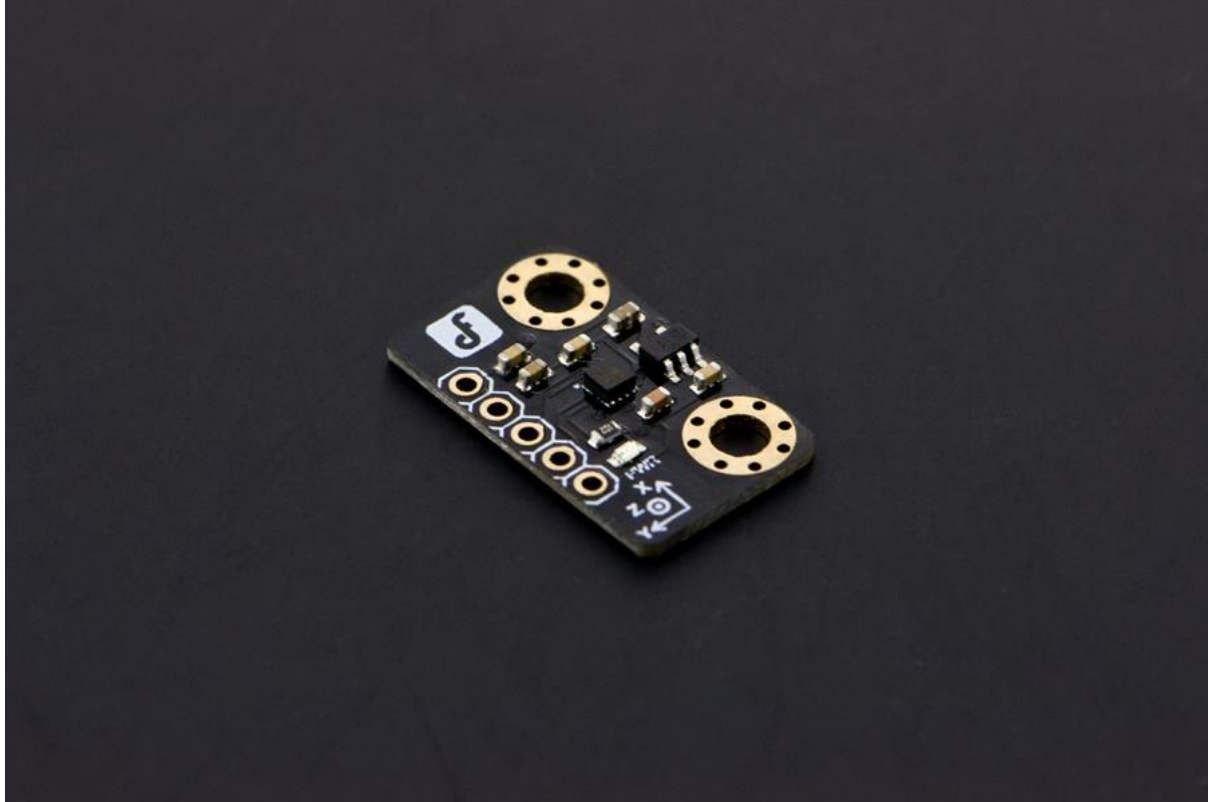




DFROBOT®
DRIVE THE FUTURE

Triple Axis Accelerometer BMA220 (Tiny)

SKU:SEN0168



INTRODUCTION

This Triple Axis Accelerometer with Bosch BMA220 is an ultra small triaxial, low-g acceleration sensor breakboard with SPI and I2C interface, aiming for low power consumer market applications. It allows measurement of accelerations in 3 perpendicular axes and thus senses tilt, motion, shock and vibration in cell phones, handhelds, computer peripherals, man-machine interfaces, virtual reality features and game controllers.

With a size of only 2 mm x 2 mm, the Bosch BMA220 represents a new generation of acceleration sensors. The Tri-Axis Accelerometer integrates a multitude of features that facilitates its use especially in the area of motion detection applications, such as device orientation detection, gaming, HMI and menu browser control. It is highly configurable in order to give the designer full flexibility when integrating the sensor into his system.

It can be used in sensing tilt, motion and shock vibration in mobile devices, handhelds, digital peripherals, man-machine interfaces, virtual reality features and game consoles.

Note: Recommend to connect the sensor to 3.3v powered microcontroller. Though it directly works with [Arduino UNO](#)/[arduino Leonardo](#)(System working voltage: 5v).



DFROBOT®
DRIVE THE FUTURE

SPECIFICATION

- Power supply: 2.0-3.6V
- Interface: I2C
- Acceleration range: $\pm 2g/\pm 4g/\pm 8g/\pm 16g$
- Ultra Low Power
- LED power indication
- Tiny size design and easy-to-use
- Compatible with Arduino controllers
- Size: 13x22mm(0.51x0.87")