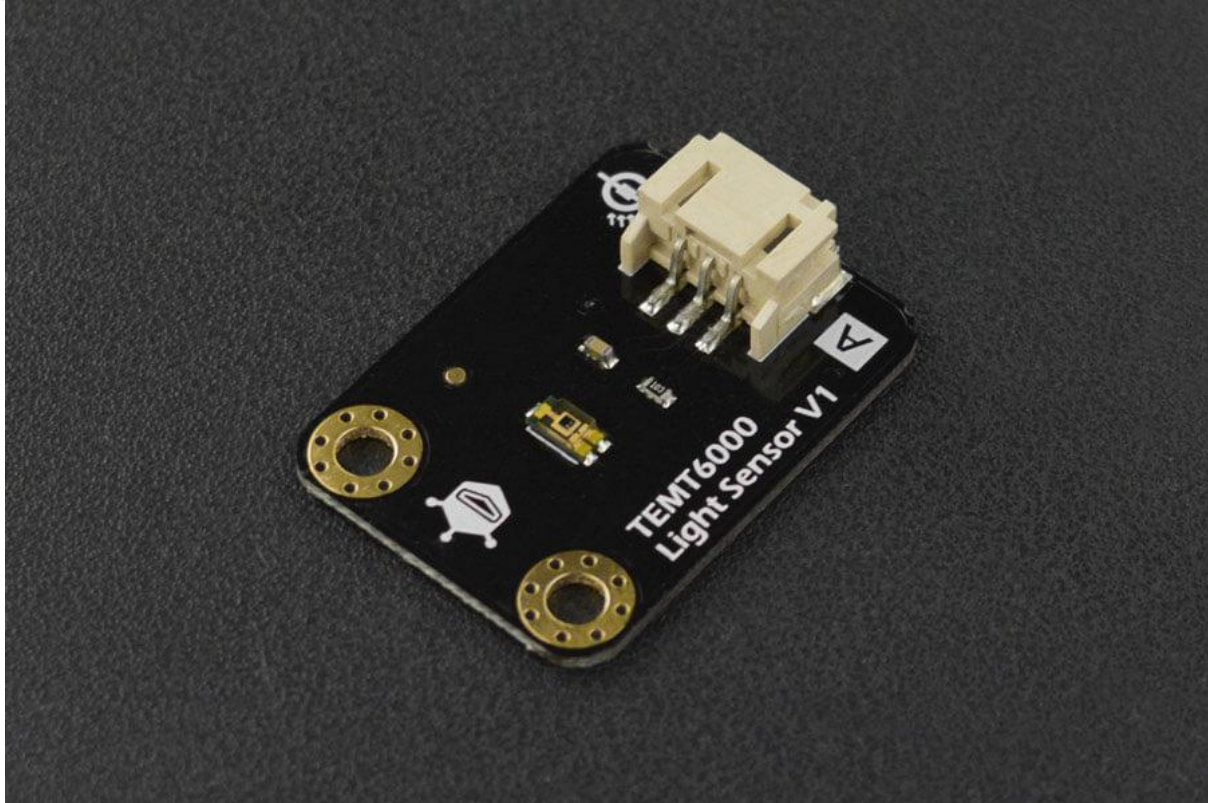




DFROBOT[®]
DRIVE THE FUTURE

Gravity: Analog Ambient Light Sensor TEMT6000

SKU:SEN0043



INTRODUCTION

Light sensors are probably one of the most common sensors in life, they can be found in your laptop, phone or home lighting system. A light sensor measures the level of light in a room or ambient light in a space.

This module uses a special ambient light detector (TEMT6000) with spectral response that closely emulates the human eye. It help you to to detect the light density and reflect the analog voltage signal back to Arduino controller. You can set the threshold of voltage level to trigger other units on your Arduino project.

Notice: The new version of analog sensor port pin mapping has been changed as the following two features. Please check the [tips for changing sensor cable pin mapping](#) while using the I/O Expansion shield. We will continue to update. For the inconvenience caused, please understand.

FEATURES

- Near Human Eye Spectral Response and Very Low IR Sensitivity
- Scalable Output Voltage



DFROBOT[®]
DRIVE THE FUTURE

SPECIFICATION

- Supply Voltage: DC 3.3~5.5V
- Operating Temperature: -40~85°C
- Illumination Range: 1 – 1000 Lux
- Output: analog voltage, 0 – 5V @VCC=5V
- Module Size: 30 x 22mm (1.2x0.9 in)