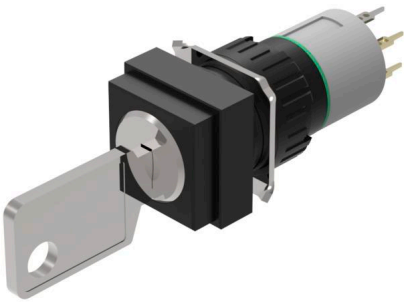


EAO – Your Expert Partner for Human Machine Interfaces

51-445.036D - Keylock switch 2 positions square - Actuator

51-445.036D - Keylock switch 2 positions square - Actuator



Attention: The preview is based on a sample product. This can differ from your current configuration.

Attribute

Design	raised
Front dimension	18 mm x 18 mm
Front form	square
IP front protection	IP65
Mounting cut-out	Ø 16 mm
Contacts	1 NC / 1 NO
Contact material	Gold
Rotary positions	2
Switching action	Rest (a) - Maintained
Switching angle	90° right
Switching current	0.1 A
Switching system	Low-level element
Switching voltage	42 V
Terminal	Universal terminal
Weight	0.016 kg
Switching rating	42 V @ 0,1 A

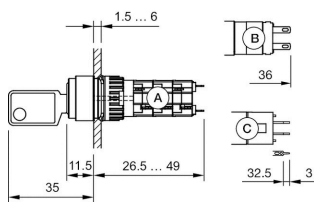
Function

Keylock switch

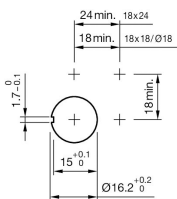
EAO – Your Expert Partner for Human Machine Interfaces

51-445.036D - Keylock switch 2 positions square - Actuator

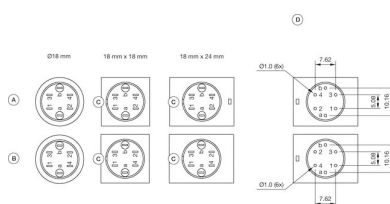
Dimensions



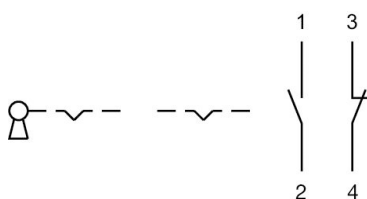
Mounting cut-outs



Component layouts



Wiring diagrams



Additional information

Standard lock: DOM 311

Front plastic black

a = Key remove

Contacts: NC = Normally closed, NO = Normally open

Standard lock: DOM 311

Contacts: NC = Normally closed, NO = Normally open

a = Key remove