



# Product Change Notification

Current Date: 29-Nov-2020

## TE Connectivity

**Product Change Notification:** E-20-016724**PCN Date:** 27-NOV-20**Customer:** TTI, Inc. ( 1305175 )**Location:** Maisach-gernlinden**Agreement:** TTI001

TE would like to inform you of the following change(s) to the listed TE Connectivity Product. In case of any further questions about this change(s), please contact your TE Connectivity Sales Engineer. Affected part, drawing and/or specification numbers are listed on the attached sheet(s).

**General Product Description:**

C-1103032 HD.64.Sti.C, C-1103033 HD.64.Bu.C, C-1103112 HN.D.64.Sti.C, C-1103113 HN.D.64.Bu.C

**Description of Changes**

Dear Customer, please be informed that we adjusted our internal drawings documentation and added mark B and C for description of the pin column. The descriptions mark B and C there are currently visible on the drawings approved by you in the last PCN - E-20-007704. This will not affect any functionality of our products and this is only internal drawings clarification. Thank you for understanding.

**Other attachments:**
[C-1103032\\_D1](#)
[C-1103033\\_D1](#)
[C-1103112\\_C1](#)
[C-1103113\\_C1](#)
**Reason for Changes:**

Document Clarification. Internal drawings clarification.

**Estimated Dates:**
**Last Order Date** (Obsolete Parts Only):**First Date To Ship** (Changed Parts Only):**Last Ship Date** (Obsolete Parts Only):**Last Date for Mixed Shipments:** (Changed Parts Only):

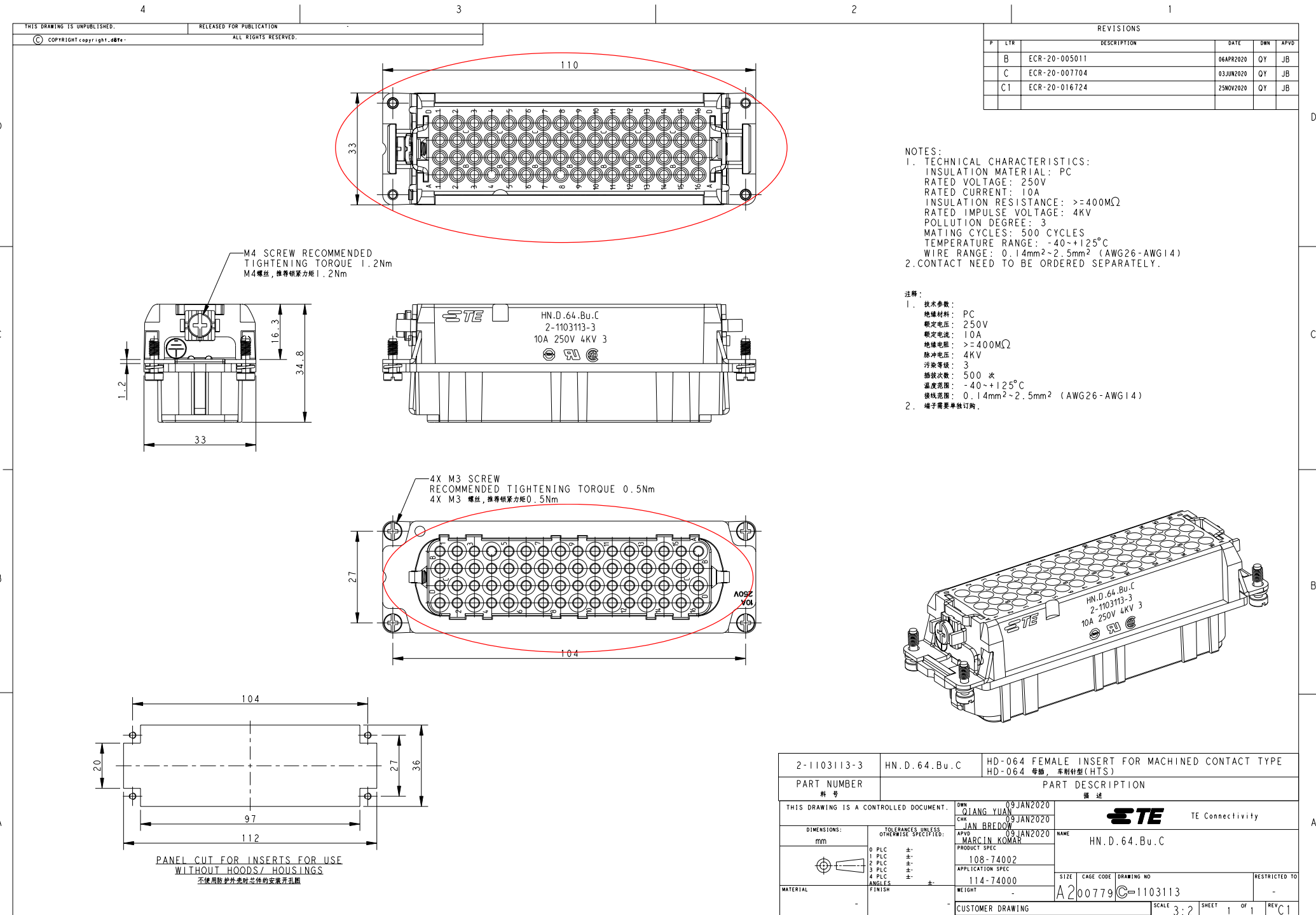
No Mixed Shipments

The documents listed below are being modified. Related parts that are not explicitly listed on this PCN are not being modified or discontinued as per the PCN. The Last Order Date, Last Ship Date, First Date to Ship Changed Parts and last date for Mixed Shipments apply only to parts explicitly listed on this PCN.

**Note: This PCN contains only document changes, these changes do not affect the form, fit or function of the parts referenced.**

**Customer Drawing(s) Being Modified:**

| Drawing Number          | Related Part Number | Customer Part Number | Current Revision | New Revision |
|-------------------------|---------------------|----------------------|------------------|--------------|
| <a href="#">1103112</a> | 2-1103112-3         | TYC2-1103112-3       | C                |              |
| <a href="#">1103113</a> | 2-1103113-3         | TYC2-1103113-3       | C                |              |



4

3

2

1

THIS DRAWING IS UNPUBLISHED.

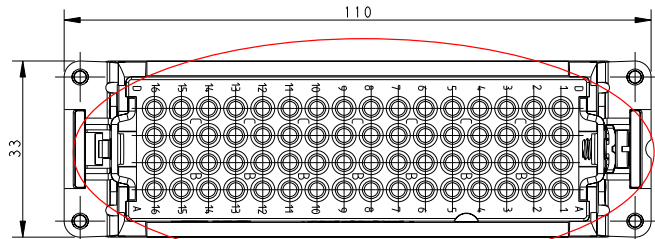
RELEASED FOR PUBLICATION

COPYRIGHT copyright.d87e

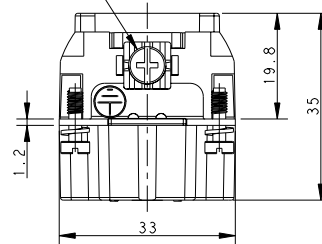
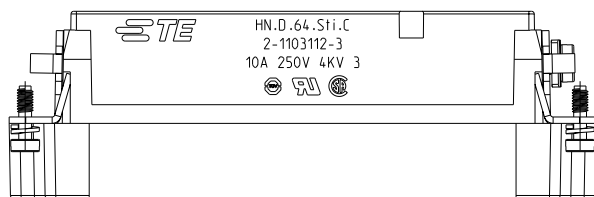
ALL RIGHTS RESERVED.

## REVISIONS

| P  | LTR | DESCRIPTION   | DATE      | DWN | APVD |
|----|-----|---------------|-----------|-----|------|
| B  |     | ECR-20-005011 | 06APR2020 | QY  | JB   |
| C  |     | ECR-20-007704 | 03JUN2020 | QY  | JB   |
| C1 |     | ECR-20-016724 | 25NOV2020 | QY  | JB   |



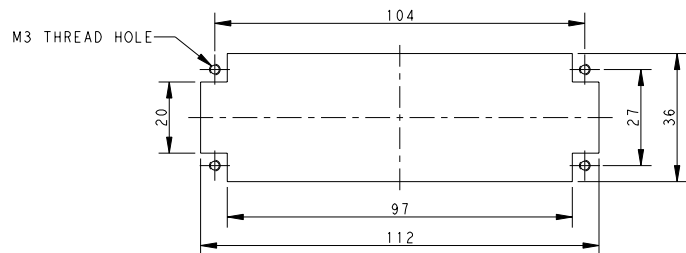
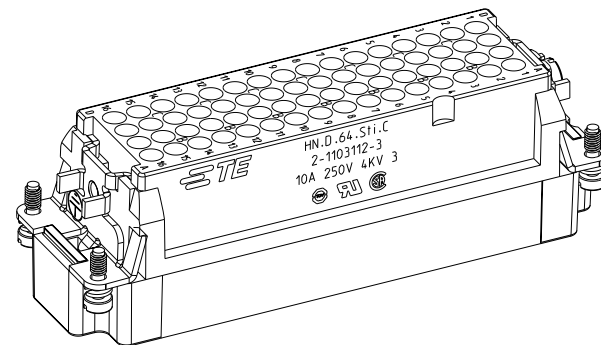
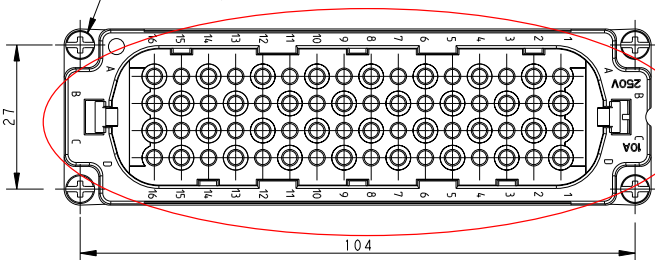
M4 SCREW RECOMMENDED  
TIGHTENING TORQUE 1.2Nm  
M4螺丝, 推荐锁紧力矩1.2Nm



- NOTES:
- TECHNICAL CHARACTERISTICS:
    - INSULATION MATERIAL: PC
    - RATED VOLTAGE: 250V
    - RATED CURRENT: 10A
    - INSULATION RESISTANCE:  $\geq 400M\Omega$
    - RATED IMPULSE VOLTAGE: 4KV
    - POLLUTION DEGREE: 3
    - MATING CYCLES: 500 CYCLES
    - TEMPERATURE RANGE:  $-40 \sim +125^{\circ}C$
    - WIRE RANGE:  $0.14mm^2 \sim 2.5mm^2$  (AWG26-AWG14)
  - CONTACT NEED TO BE ORDERED SEPARATELY.

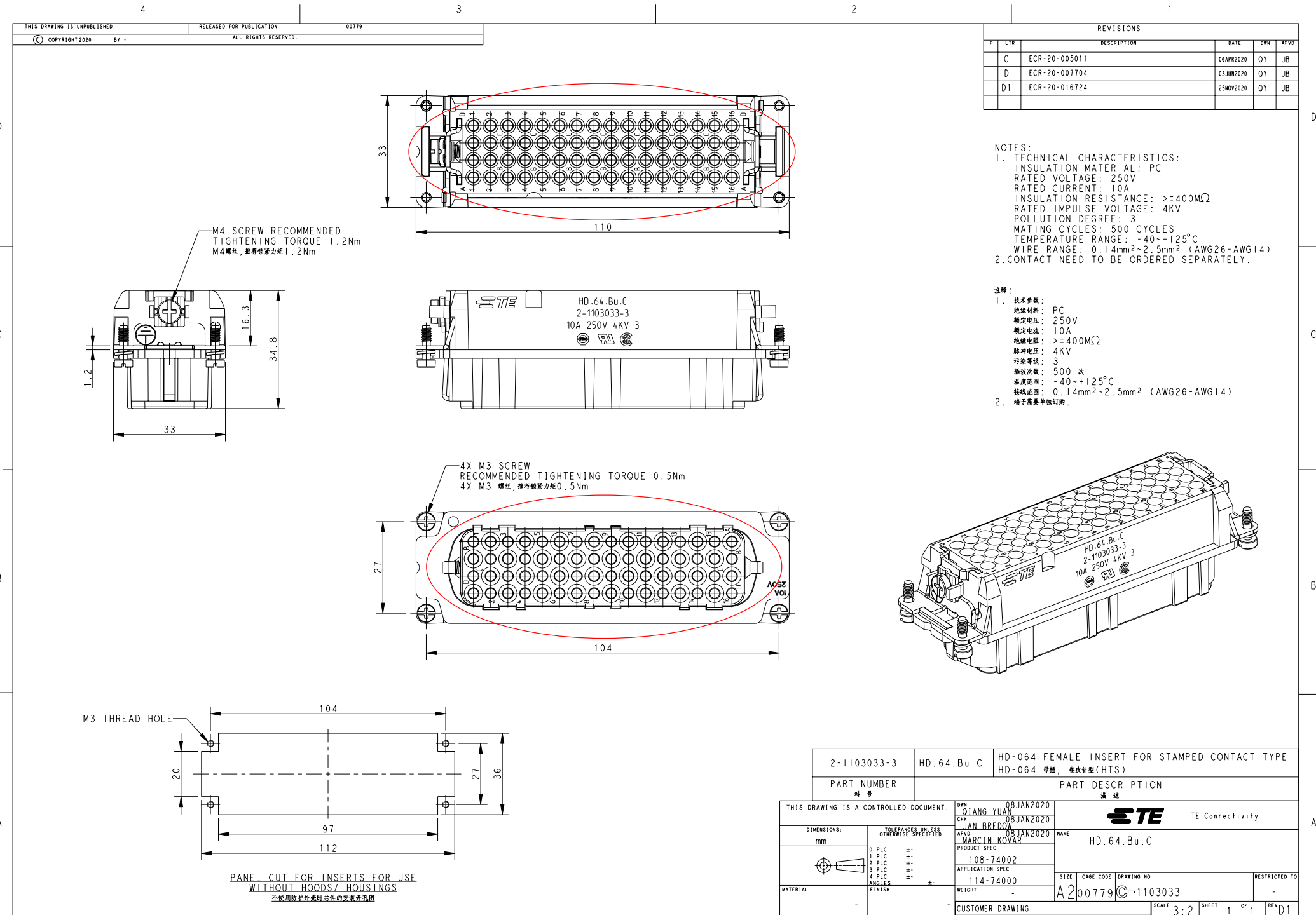
- 注释:
- 技术参数:
    - 绝缘材料: PC
    - 额定电压: 250V
    - 额定电流: 10A
    - 绝缘电阻:  $\geq 400M\Omega$
    - 脉冲电压: 4KV
    - 污染等级: 3
    - 插拔次数: 500 次
    - 温度范围:  $-40 \sim +125^{\circ}C$
    - 接线范围:  $0.14mm^2 \sim 2.5mm^2$  (AWG26-AWG14)
  - 端子需要单独订购。

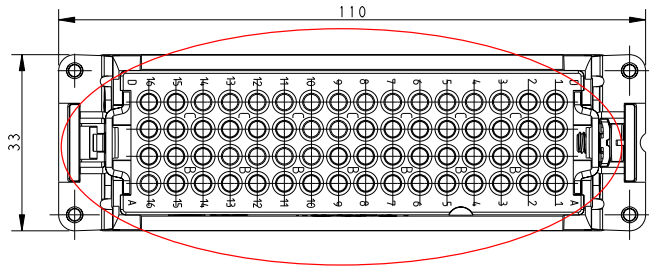
4X M3 SCREW  
RECOMMENDED TIGHTENING TORQUE 0.5Nm  
4X M3 螺丝, 推荐锁紧力矩0.5Nm



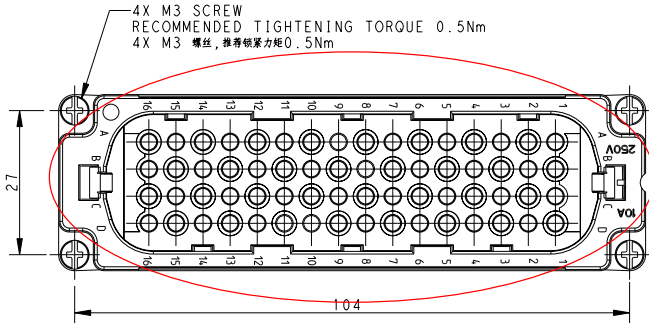
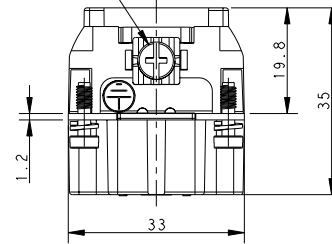
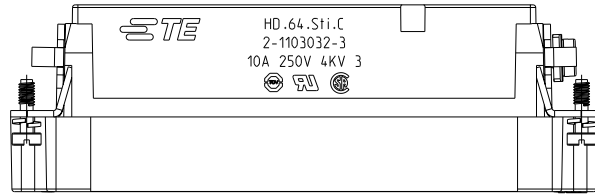
PANEL CUT FOR INSERTS FOR USE  
WITHOUT HOODS/ HOUSINGS  
不使用防护外壳时零件的安装开孔图

|  |  |  |  |   |  |
|--|--|--|--|---|--|
| 2-1103112-3                            |  | HN.D.64.Sti.C  |  | HD-064 MALE INSERT FOR MACHINED CONTACT TYPE<br>HD-064 公插, 车削针型 (HTS) |  |
| PART NUMBER                            |  | PART DESCRIPTION   |  |   |  |
| 料号                                     |  | 描述   |  |   |  |
| THIS DRAWING IS A CONTROLLED DOCUMENT. |  | <div>DWN 08JAN2020<br/>CHK QIANG YUAN 08JAN2020<br/>APVD JAN BREDOW 08JAN2020<br/>KOMAR MARCIN</div> |  |   |  |
| DIMENSIONS:                            |  | TOLERANCES UNLESS OTHERWISE SPECIFIED:   |  | NAME  |  |
| mm                                     |  | 0 PLC ±<br>1 PLC ±<br>2 PLC ±<br>3 PLC ±<br>4 PLC ±<br>ANGLES ±<br>FINISH                            |  | HN.D.64.Sti.C   |  |
|  |  | PRODUCT SPEC<br>108-74002<br>APPLICATION SPEC<br>114-74000   |  | SIZE CAGE CODE DRAWING NO   |  |
| MATERIAL                               |  | WEIGHT   |  | RESTRICTED TO   |  |
| -                                      |  | -  |  | A200779C=1103112  |  |
| CUSTOMER DRAWING                       |  | SCALE 3:2  |  | SHEET 1 OF 1 REV  |  |

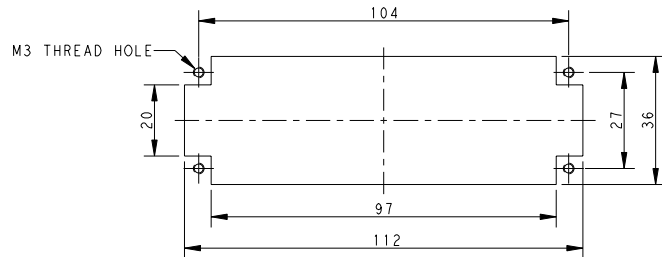




M4 SCREW RECOMMENDED  
TIGHTENING TORQUE 1.2Nm  
M4 螺丝, 推荐锁紧力矩 1.2Nm



4X M3 SCREW  
RECOMMENDED TIGHTENING TORQUE 0.5Nm  
4X M3 螺丝, 推荐锁紧力矩 0.5Nm

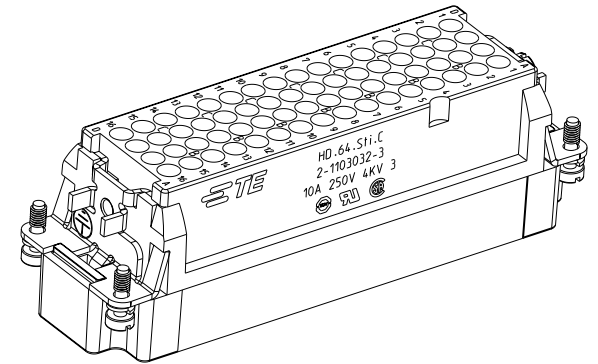


PANEL CUT FOR INSERTS FOR USE  
WITHOUT HOODS/ HOUSINGS  
不使用防护外壳时的安装开孔图

| REVISIONS |     |               |           |     |      |
|-----------|-----|---------------|-----------|-----|------|
| P         | LTR | DESCRIPTION   | DATE      | DWN | APVD |
| C         |     | ECR-20-005011 | 06APR2020 | QY  | JB   |
| D         |     | ECR-20-007704 | 03JUN2020 | QY  | JB   |
| D1        |     | ECR-20-016724 | 25NOV2020 | QY  | JB   |

NOTES:  
1. TECHNICAL CHARACTERISTICS:  
INSULATION MATERIAL: PC  
RATED VOLTAGE: 250V  
RATED CURRENT: 10A  
INSULATION RESISTANCE:  $\geq 400M\Omega$   
RATED IMPULSE VOLTAGE: 4KV  
POLLUTION DEGREE: 3  
MATING CYCLES: 500 CYCLES  
TEMPERATURE RANGE:  $-40 \sim +125^{\circ}C$   
WIRE RANGE:  $0.14mm^2 \sim 2.5mm^2$  (AWG26-AWG14)  
2. CONTACT NEED TO BE ORDERED SEPARATELY.

注释:  
1. 技术参数:  
绝缘材料: PC  
额定电压: 250V  
额定电流: 10A  
绝缘电阻:  $\geq 400M\Omega$   
脉冲电压: 4KV  
污染等级: 3  
插拔次数: 500 次  
温度范围:  $-40 \sim +125^{\circ}C$   
接线范围:  $0.14mm^2 \sim 2.5mm^2$  (AWG26-AWG14)  
2. 端子需要单独订购。



|   |  |  |  |  |
|---|--|--|--|--|
| 2-1103032-3   |  | HD.64.Sti.C  | HD-064 MALE INSERT FOR STAMPED CONTACT TYPE<br>HD-064 公插, 冲压针型 (HTS) |  |
| PART NUMBER<br>料号   |  | PART DESCRIPTION<br>描述   |  |  |
| DRAWING IS A CONTROLLED DOCUMENT.   |  |  |  |  |
| DIMENSIONS:<br>mm   |  | DWN: QIANG YUAN 08JAN2020<br>CHK: JAN BREDOW 08JAN2020<br>APVD: MARCIN KOMAR 08JAN2020 |  |  |
| TOLERANCES UNLESS OTHERWISE SPECIFIED:                                    |  | TE Connectivity  |  |  |
| 0 PLC ±<br>1 PLC ±<br>2 PLC ±<br>3 PLC ±<br>4 PLC ±<br>ANGLES ±<br>FINISH |  | NAME: HD.64.Sti.C  |  |  |
| PRODUCT SPEC<br>108-74002   |  | SIZE: A2   |  |  |
| APPLICATION SPEC<br>114-74000   |  | CAGE CODE: C=1103032   |  |  |
| WEIGHT: -   |  | DRAWING NO: 3:2  |  |  |
| CUSTOMER DRAWING  |  | SHEET: 1 OF 1  |  |  |
|   |  | REV: D1  |  |  |