



GlenSound

# BEATRICE MIX32

**DANTE® /AES67 NETWORK AUDIO  
FIXED MIXER SUBRACK WITH 32 x 32 x up  
to 4 MIXERS**

**PRODUCT DETAILS**

**6 BROOKS PLACE, MAIDSTONE, KENT, ME14 1HE. ENGLAND.**  
Visit our Website at [www.glen sound.com](http://www.glen sound.com)

**TEL: +44 (0) 1622 753662**



# GlenSound Electronics Ltd

Thank you for choosing a new GlenSound product.

All rights reserved.

Information contained in this manual is subject to change without notice, if in doubt please contact us for the latest product information.

If you need any help with the product then we can be contacted at:

GlenSound Electronics Ltd  
1 – 6 Brooks Place  
Maidstone  
Kent  
ME14 1HE  
United Kingdom

Telephone: +44 (0) 1622 753662

Fax: +44 (0) 1622 762330

## EMAIL ADDRESSES

General enquires: [office@glenSound.co.uk](mailto:office@glenSound.co.uk)

Technical enquires: [techinfo@glenSound.co.uk](mailto:techinfo@glenSound.co.uk)

Sales enquires: [sales@glenSound.co.uk](mailto:sales@glenSound.co.uk)

## **PRODUCT WARRANTY:**

All equipment is fully tested before dispatch and carefully designed to provide you with trouble free use for many years.

We have a policy of supporting products for as long as possible and guarantee to be able to support your product for a minimum of 10 years.

For a period of one year after the goods have been despatched the Company will guarantee the goods against any defect developing after proper use providing such defects arise solely from faulty materials or workmanship and that the Customer shall return the goods to the Company's works or their local dealer.

All non-wear parts are guaranteed for 2 years after despatch and any defect developing after proper use from faulty materials or workmanship will be repaired under this warranty providing the Customer returns the goods to the Company's works or their local dealer.



### **SAFETY WARNING**

The MIX32 contains no user serviceable parts and **must not** be dissassembled in any way.



# EU DECLARATION OF CONFORMITY FOR:

## MIX32

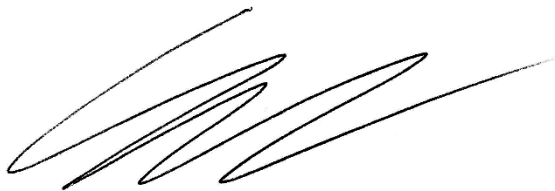
*AoIP, Fixed Ratio Mixer*

**This declaration of conformity is issued under the sole responsibility of the manufacturer.**

**This equipment is manufactured by GlenSound Electronics Ltd of Brooks Place Maidstone Kent ME14 1HE is  marked and conforms to the following Union harmonisation legislation:**

<b>Low Voltage Directive:</b>	<b>EN60065 and EN62368-1:2014</b>
<b>Emissions:</b>	<b>BS EN55032:2015</b>
<b>Immunity:</b>	<b>BS EN55035:2017</b>

**Signed for and on behalf of GlenSound Electronics Ltd.**



**Gavin Davis, Managing Director  
Maidstone, Kent, England  
Date: 21/05/2019**

## RoHS DIRECTIVE

EC directive 2002/95/EC restricts the use of the hazardous substances listed below in electrical and electronic equipment.

This product conforms to the above directive and for this purposes, the maximum concentration values of the restricted substances by weight in homogenous materials are:

Lead	0.1%
Mercury	0.1%
Hexavalent Chromium	0.1%
Polybrominated Biphenyls	0.1%
Polybrominated Diphenyl Ethers	0.1%
Cadmium	0.01%

# **WASTE ELECTRICAL AND ELECTRONIC EQUIPMENT REGULATIONS 2006 (WEEE)**

GlenSound Electronics Ltd is registered for business to business sales of WEEE in the UK our registration number is:

WEE/JJ0074UR

# **GLENSOUND BEATRICE MIX32**

## **Handbook Contents**

Issue 4

Description

Page No.

### **Contents**

PRODUCT WARRANTY:.....	4
OVERVIEW .....	9
SIMPLIFIED BLOCK DIAGRAM.....	10
CONNECTING THE BEATRICE MIX32 TO A DANTE® NETWORK.....	11
Getting Dante Controller.....	11
Connecting Beatrice Mix32 To the Network .....	11
Audio Over IP Network.....	11
Running Dante Controller.....	12
Dante Controller Tip.....	12
MIXER MODES.....	13
PASS THROUGH MODE.....	13
FIXED MIXER MODE.....	14
CLEAN FEED (Mix-Minus) MODE .....	15
COMPRESSOR/ LIMITERS .....	17
UPDATING FIRMWARE.....	18
AES67 MODE .....	24
SPECIFICATION .....	27



## **OVERVIEW**

The Glensound BEATRICE MIX32 is a high-density audio mixer for producing fixed ratio audio mixes from/ to Dante® and AES67 audio networks. It can be fitted with a maximum of 4 independent mixer cards, each with their own redundant network interface. Each of these mixer cards provides 32 audio inputs and 32 audio outputs from the network, with the 32 outputs being mixes derived from different sets of input channels.

Audio limiter/ compressor circuits are also provided for each output.

The fixed ratio mixes in the Beatrice MIX32 were originally designed to allow network audio intercom systems to generate multiple listening circuits, however the high-quality low noise, digital mixers can also be used for many other applications.

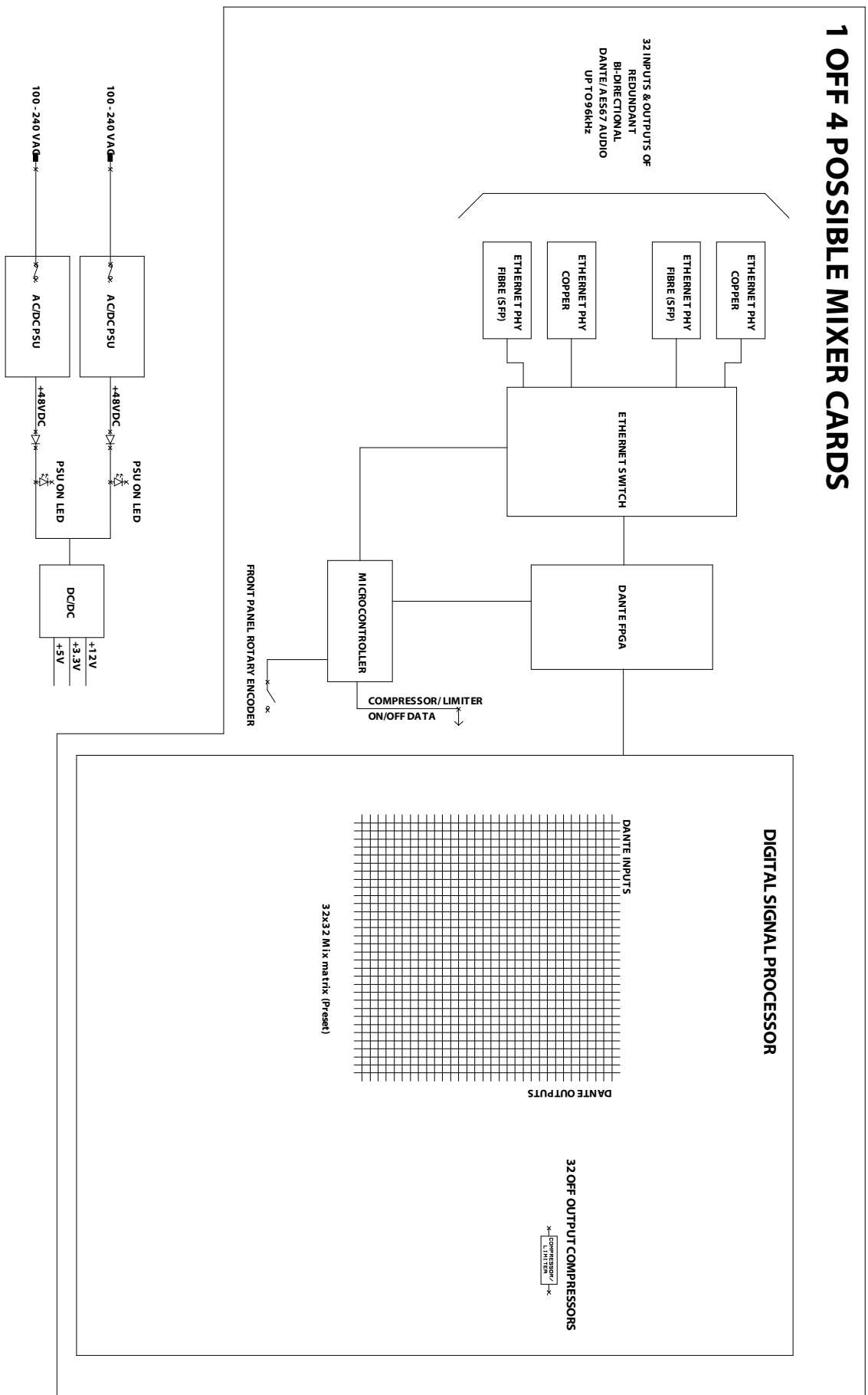
The Beatrice MIX32 can also operate in a 'pass through' mode, where all Dante® inputs are passed straight through to the equivalent numbered Dante® output.

A clean feed or mix-minus mode is also available. In this mode, each mix has multiple outputs. Each output contains all channels in the mix except its own input.

Being designed for 24/7 broadcast operation, the Beatrice MIX32 features both redundant power supplies and redundant network interfaces.

Dante® network audio is a common protocol for distributing high quality linear audio over standard IP networks and it is widely used by many audio equipment manufacturers. The Glensound Beatrice Mix32 Dante® audio interface will be compatible with any other manufacturers Dante audio interface. Further details of Dante® network audio can be found at [www.audinate.com](http://www.audinate.com)

# SIMPLIFIED BLOCK DIAGRAM



## **CONNECTING THE BEATRICE MIX32 TO A DANTE® NETWORK**

The Beatrice Mix32 is a network audio device utilising the reliable and versatile Dante® audio over IP protocol. Dante® is a proprietary system (although very widely used) the originators of which are Audinate.

The information below is only meant as a very basic guide. Full details of the power of Dante® network audio and instructions for using it can be found at [www.audinate.com](http://www.audinate.com)

### **Getting Dante Controller**

If you are connecting the inferno to a new Dante network the first thing you will need to do is to get the free Dante controller software from Audinate. This can be downloaded by visiting Audinate's web site at [www.audinate.com](http://www.audinate.com)

### **Connecting Beatrice Mix32 To the Network**

Beatrice Mix32s can be connected to the network that you are going to use for your audio distribution simply by plugging in either, and, or any of the network connections on the front. Once connected to the network it will be possible to see the Beatrice from within the Dante controller and route its' audio circuits.

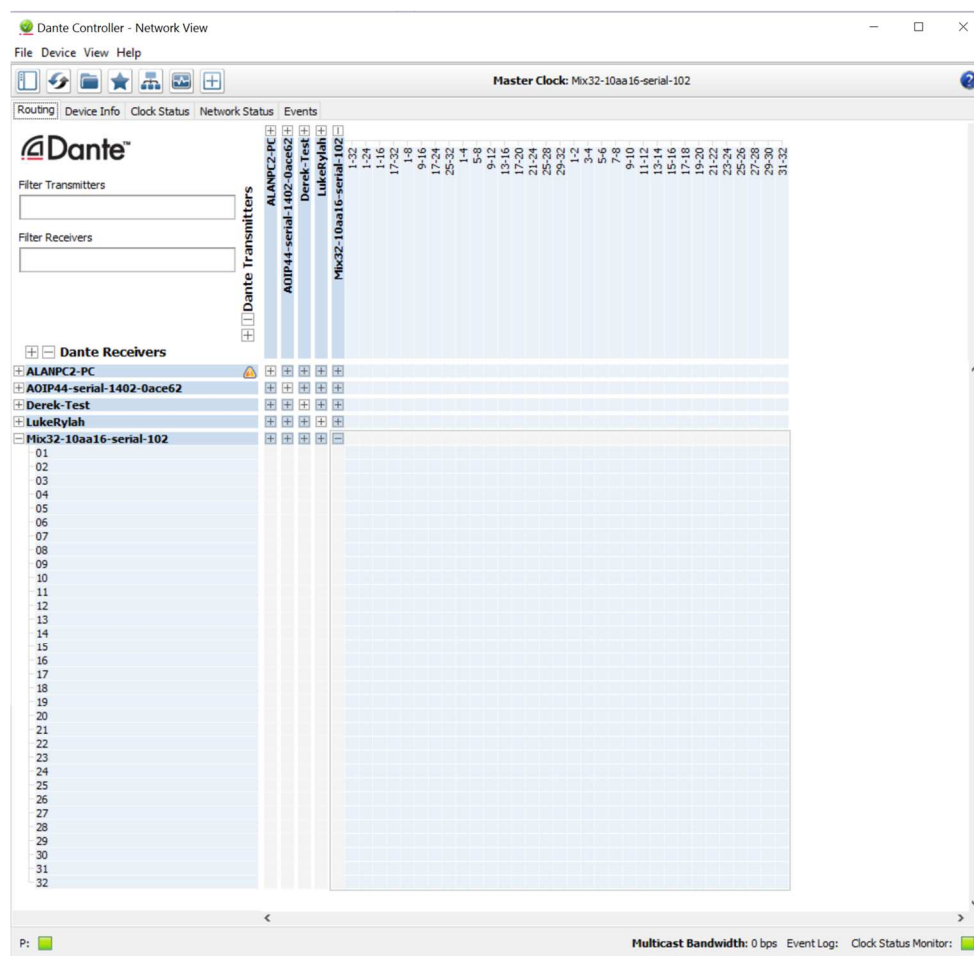
### **Audio Over IP Network**

We strongly recommend that you consider your network topology carefully and would not recommend sharing broadcast audio and general data on the same network.

For more details of audio over IP network structure please visit [www.audinate.com](http://www.audinate.com)

## Running Dante Controller

At the time of writing this manual the Dante Controller looks as per the screenshot below:



The Beatrice Mix32 will have been named at the factory during test to allow them to be identified by the Dante controller.

The format used for the factory name is:

'Mix32-10aa16-serial-102'

Where 'Mix32-10aa16' refers to the Glensound product i.e. Beatrice Mix32 and its Dante Brooklyn module MAC address and 'serial-102' denotes the hardware racks serial number.

## Dante Controller Tip

If you have never run Dante controller before then make sure that on the bottom left of the Dante controllers' screen 'P' or 'S' is next to a green square as this indicates that it is connected to a network. By clicking 'P' or 'S' a pop-up box opens to allow you to set what network interface the controller is using.

## **MIXER MODES**

The mixer mode is selected using the rotary Hex switch on the front panel.

**IMPORTANT:** The position of the rotary switch is only read by the microprocessor while the Beatrice Mix32 is turning on. So, moving the switch to a different position while the unit is on will make no difference until the unit is powered down and turned back on.

Switch position	Mode	Description
0	Pass through	Inputs passed directly to outputs
1	Fixed Mixer Mode	32 fixed mix sums
2	Mix_minus_32	32 channel mix minus
3	Mix_minus_24_8	1x24, and 1x8 channel mix minus
4	Mix_minus_16_16	2x16 channel mix minus
5	Mix_minus_16_8_8	1x16 and 2x8 channel mix minus
6	Mix_minus_16_8_4_4	1x16, 1x8, and 2x4 channel mix minus
7	Mix_minus_8_8_8_8	4x8 channel mix minus
8	Mix_minus_8_8_8_4_4	3x8 and 2x4 channel mix minus
9-F	Reserved for future use	Do not use

## **PASS THROUGH MODE**

### **General**

Pass through mode sets each incoming Dante audio circuit to be routed directly to the equivalent numbered outgoing Dante audio circuit.

### **Uses**

Pass through mode is very useful in network audio systems that incorporate devices using a 4-channel chipset from Audinate (the company behind Dante®) called Ultimo.

The Ultimo chipset can provide 4 audio inputs & outputs to a Dante® network. However, the chipset can only receive data streams from 2 locations within the network, meaning that to use all 4 incoming audio circuits these must be sent from no more than 2 different devices on the network.

If you need a device on your network that contains an Ultimo chipset to receive audio from 4 different network locations then the pass through mode of the Beatrice Mix 32 will have to be used. The principle of operation is very simple. Route all 4 audio channels originating from different devices that you want to be received by the Ultimo chipset via 4 pass through channels of the Beatrice Mix 32 and then the receiving Ultimo chipset will receive all 4 audio channels from just one network source (and hence work).

## **FIXED MIXER MODE**

Each mixer has 32 audio inputs and 32 audio outputs to/ from the Dante®/ AES67 network. The table below describes what input channels are mixed together to create each output.

Output	Mix of inputs
1	1-32
2	1-24
3	1-16
4	17-32
5	1-8
6	9-16
7	17-24
8	25-32
9	1-4
10	5-8
11	9-12
12	13-16
13	17-20
14	21-24
15	25-28
16	29-32
17	1-2
18	3-4
19	5-6
20	7-8
21	9-10
22	11-12
23	13-14
24	15-16
25	17-18
26	19-20
27	21-22
28	23-24
29	25-26
30	27-28
31	29-30
32	31-32

## **CLEAN FEED (Mix-Minus) MODE**

- **General**

In the clean feed configurations, several pre-set configurations are available.

Each mix has multiple outputs, with each output configured so that it does not include its own mix input.

For example, switch position 2 provides a 32-channel mix. Output channel 5 is a mix of channels 1-4, and 6-32, so audio from input channel 5 is not present on the output. This is useful where you wish to contribute to a mix but do not wish to hear your own voice back.

See the table below for a full list of available clean feed mixes per switch position.

All of the clean feed mixes feature automatic signal ducking. The highest numbered input channel of a mix has priority and will cause the level of the other channels in the mix to be reduced.

Switch position →	2	3	4	5	6	7	8	9
	Mix_minus_32	Mix_minus_24_8	Mix_minus_16_16	Mix_minus_16_8_8	Mix_minus_16_8_4_4	Mix_minus_8_8_8_8	Mix_minus_8_8_8_4_4	Mix_minus_8_8_4_4_4_4
Output	Mix of inputs	Mix of inputs	Mix of inputs	Mix of inputs	Mix of inputs	Mix of inputs	Mix of inputs	Mix of inputs
1	1-32 excluding 1	1-24 excluding 1	1-16 excluding 1	1-16 excluding 1	1-16 excluding 1	1-8 excluding 1	1-8 excluding 1	1-8 excluding 1
2	1-32 excluding 2	1-24 excluding 2	1-16 excluding 2	1-16 excluding 2	1-16 excluding 2	1-8 excluding 2	1-8 excluding 2	1-8 excluding 2
3	1-32 excluding 3	1-24 excluding 3	1-16 excluding 3	1-16 excluding 3	1-16 excluding 3	1-8 excluding 3	1-8 excluding 3	1-8 excluding 3
4	1-32 excluding 4	1-24 excluding 4	1-16 excluding 4	1-16 excluding 4	1-16 excluding 4	1-8 excluding 4	1-8 excluding 4	1-8 excluding 4
5	1-32 excluding 5	1-24 excluding 5	1-16 excluding 5	1-16 excluding 5	1-16 excluding 5	1-8 excluding 5	1-8 excluding 5	1-8 excluding 5
6	1-32 excluding 6	1-24 excluding 6	1-16 excluding 6	1-16 excluding 6	1-16 excluding 6	1-8 excluding 6	1-8 excluding 6	1-8 excluding 6
7	1-32 excluding 7	1-24 excluding 7	1-16 excluding 7	1-16 excluding 7	1-16 excluding 7	1-8 excluding 7	1-8 excluding 7	1-8 excluding 7
8	1-32 excluding 8	1-24 excluding 8	1-16 excluding 8	1-16 excluding 8	1-16 excluding 8	1-8 excluding 8	1-8 excluding 8	1-8 excluding 8
9	1-32 excluding 9	1-24 excluding 9	1-16 excluding 9	1-16 excluding 9	1-16 excluding 9	9-16 excluding 9	9-16 excluding 9	9-16 excluding 9
10	1-32 excluding 10	1-24 excluding 10	1-16 excluding 10	1-16 excluding 10	1-16 excluding 10	9-16 excluding 10	9-16 excluding 10	9-16 excluding 10
11	1-32 excluding 11	1-24 excluding 11	1-16 excluding 11	1-16 excluding 11	1-16 excluding 11	9-16 excluding 11	9-16 excluding 11	9-16 excluding 11
12	1-32 excluding 12	1-24 excluding 12	1-16 excluding 12	1-16 excluding 12	1-16 excluding 12	9-16 excluding 12	9-16 excluding 12	9-16 excluding 12
13	1-32 excluding 13	1-24 excluding 13	1-16 excluding 13	1-16 excluding 13	1-16 excluding 13	9-16 excluding 13	9-16 excluding 13	9-16 excluding 13
14	1-32 excluding 14	1-24 excluding 14	1-16 excluding 14	1-16 excluding 14	1-16 excluding 14	9-16 excluding 14	9-16 excluding 14	9-16 excluding 14
15	1-32 excluding 15	1-24 excluding 15	1-16 excluding 15	1-16 excluding 15	1-16 excluding 15	9-16 excluding 15	9-16 excluding 15	9-16 excluding 15
16	1-32 excluding 16	1-24 excluding 16	1-16 excluding 16	1-16 excluding 16	1-16 excluding 16	9-16 excluding 16	9-16 excluding 16	9-16 excluding 16
17	1-32 excluding 17	1-24 excluding 17	17-32 excluding 17	17-24 excluding 17	17-24 excluding 17	17-24 excluding 17	17-24 excluding 17	17-21 excluding 17
18	1-32 excluding 18	1-24 excluding 18	17-32 excluding 18	17-24 excluding 18	17-24 excluding 18	17-24 excluding 18	17-24 excluding 18	17-21 excluding 18
19	1-32 excluding 19	1-24 excluding 19	17-32 excluding 19	17-24 excluding 19	17-24 excluding 19	17-24 excluding 19	17-24 excluding 19	17-21 excluding 19
20	1-32 excluding 20	1-24 excluding 20	17-32 excluding 20	17-24 excluding 20	17-24 excluding 20	17-24 excluding 20	17-24 excluding 20	17-21 excluding 20
21	1-32 excluding 21	1-24 excluding 21	17-32 excluding 21	17-24 excluding 21	17-24 excluding 21	17-24 excluding 21	17-24 excluding 21	21-24 excluding 21
22	1-32 excluding 22	1-24 excluding 22	17-32 excluding 22	17-24 excluding 22	17-24 excluding 22	17-24 excluding 22	17-24 excluding 22	21-24 excluding 22
23	1-32 excluding 23	1-24 excluding 23	17-32 excluding 23	17-24 excluding 23	17-24 excluding 23	17-24 excluding 23	17-24 excluding 23	21-24 excluding 23
24	1-32 excluding 24	1-24 excluding 24	17-32 excluding 24	17-24 excluding 24	17-24 excluding 24	17-24 excluding 24	17-24 excluding 24	21-24 excluding 24
25	1-32 excluding 25	25-32 excluding 25	17-32 excluding 25	25-32 excluding 25	25-28 excluding 25	25-32 excluding 25	25-28 excluding 25	25-28 excluding 25
26	1-32 excluding 26	25-32 excluding 26	17-32 excluding 26	25-32 excluding 26	25-28 excluding 26	25-32 excluding 26	25-28 excluding 26	25-28 excluding 26
27	1-32 excluding 27	25-32 excluding 27	17-32 excluding 27	25-32 excluding 27	25-28 excluding 27	25-32 excluding 27	25-28 excluding 27	25-28 excluding 27
28	1-32 excluding 28	25-32 excluding 28	17-32 excluding 28	25-32 excluding 28	25-28 excluding 28	25-32 excluding 28	25-28 excluding 28	25-28 excluding 28
29	1-32 excluding 29	25-32 excluding 29	17-32 excluding 29	25-32 excluding 29	29-32 excluding 29	25-32 excluding 29	29-32 excluding 29	29-32 excluding 29
30	1-32 excluding 30	25-32 excluding 30	17-32 excluding 30	25-32 excluding 30	29-32 excluding 30	25-32 excluding 30	29-32 excluding 30	29-32 excluding 30
31	1-32 excluding 31	25-32 excluding 31	17-32 excluding 31	25-32 excluding 31	29-32 excluding 31	25-32 excluding 31	29-32 excluding 31	29-32 excluding 31
32	1-32 excluding 32	25-32 excluding 32	17-32 excluding 32	25-32 excluding 32	29-32 excluding 32	25-32 excluding 32	29-32 excluding 32	29-32 excluding 32



## **COMPRESSOR/ LIMITERS**

Each mixer card has output compressor / limiter circuits built in.

We call the circuits compressor/ limiters because the design of the circuit means that they are neither a traditional hard limiter or soft compressor. Initially gentle compression is introduced and as the input signal increases so does the compression ratio, until eventually it becomes a limiter.

All outputs have a compressor/limiter circuit built in.

# UPDATING FIRMWARE

## Equipment needed

- A windows based PC
- USB Type A to Mini B cable
- A copy of 'DfuSe Demo' software
- The latest firmware from GlenSound
- A STM32 Device and mains power

## Instructions

### 1. Download and install DfuSE Demo


'DfuSE Demo' is a firmware updating tool that is required for loading new firmware on to the STM32 Device.

It can be downloaded from the STMicroelectronics website found here: <https://goo.gl/AbzhsA>. It is the file named "STSW-STM32080".

Once you have downloaded this file you will need to extract the .exe "DfuSe\_Demo\_V3.0.5\_Setup.exe", then run and install it.

### 2. Download firmware

The latest firmware for the STM32 Device can be found on the GlenSound website, under the respective product page. Once you have downloaded the file, place it in a folder or location of your choice.

Name	Date	Type	Size
 Dark1616S1.1.1.dfu	21/03/2018 11:18	DFU File	47 KB

*Figure 1 Example filename*

### 3. Connect To A PC

Connect the STM32 Device to the PC via the USB cable. The Mini USB connector is located on a panel of the STM32 Device.



*Figure 2 Front panel USB connector*

#### 4. Firmware update preparation

To prepare the STM32 Device for a firmware update;

1. Power on the unit
2. Press and hold down the reset button
3. Press and hold down the identify button
4. Release the reset button and then release the identify button a second after

Your PC should make an audible sound when this process is successful as windows is detecting a new USB device.

#### 5. Loading the firmware

Now open DfuSe Demo.

If the STM32 Device successfully entered DFU mode then it will appear as 'STM Device in DFU Mode' under the 'Available DFU Devices tab'.

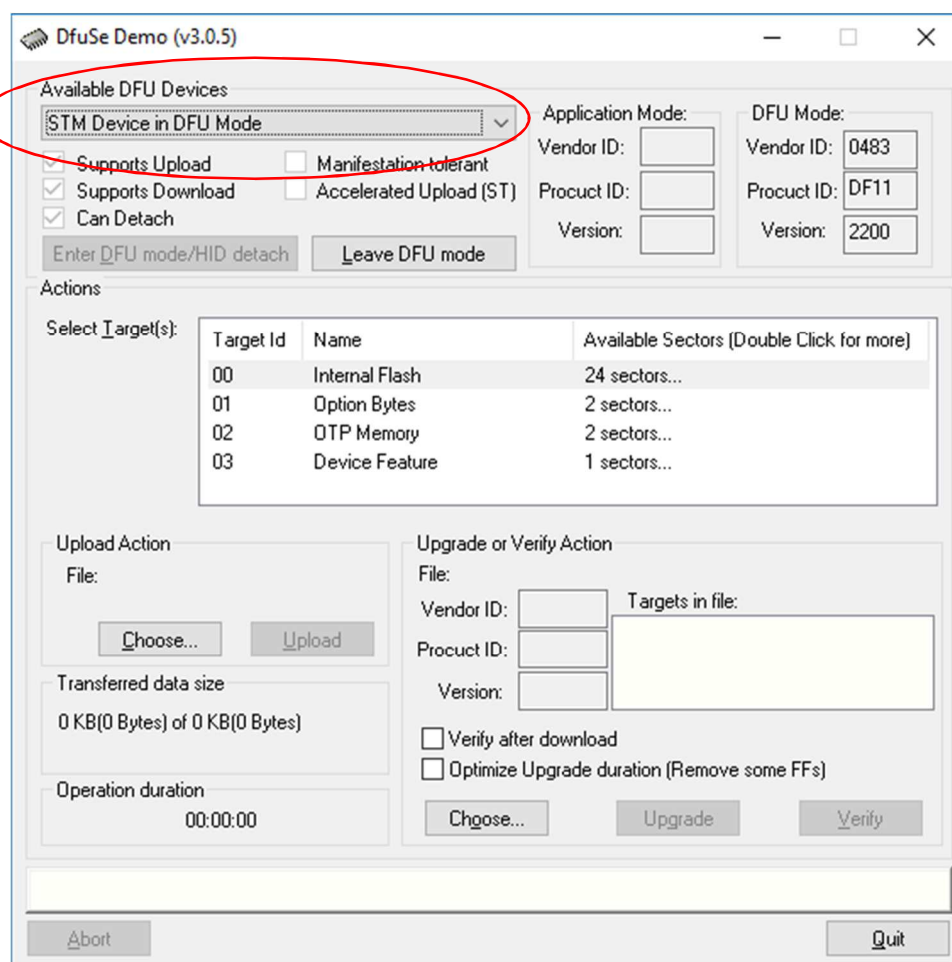


Figure 3 Device successfully recognised

Now the .dfu file needs to be selected so that DfuSe Demo knows the correct firmware to put on to the STM32 Device.

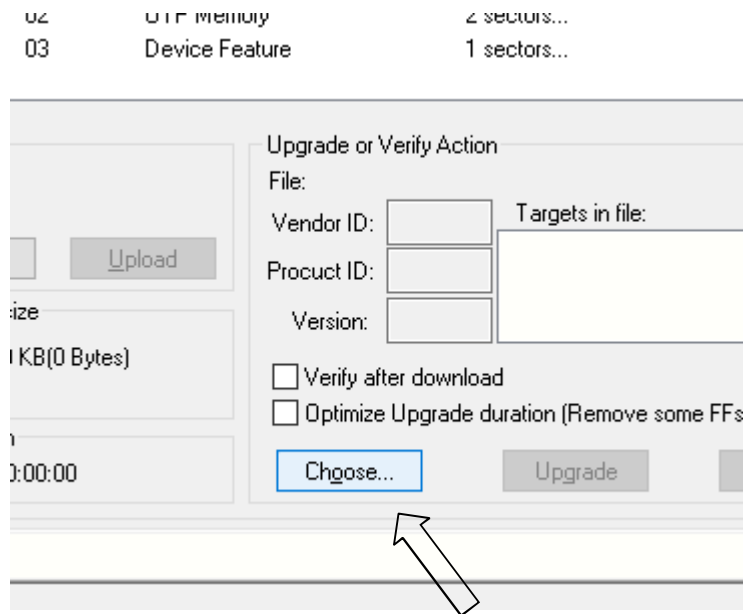


Figure 4 Choose .dfu file

Click choose and then select the .dfu file that you downloaded from the GlenSound website. This will be located in your downloads folder by default.

If the file loads successfully then it will read along the bottom 'File correctly loaded'.

## 6. Upgrading the STM32 Device firmware

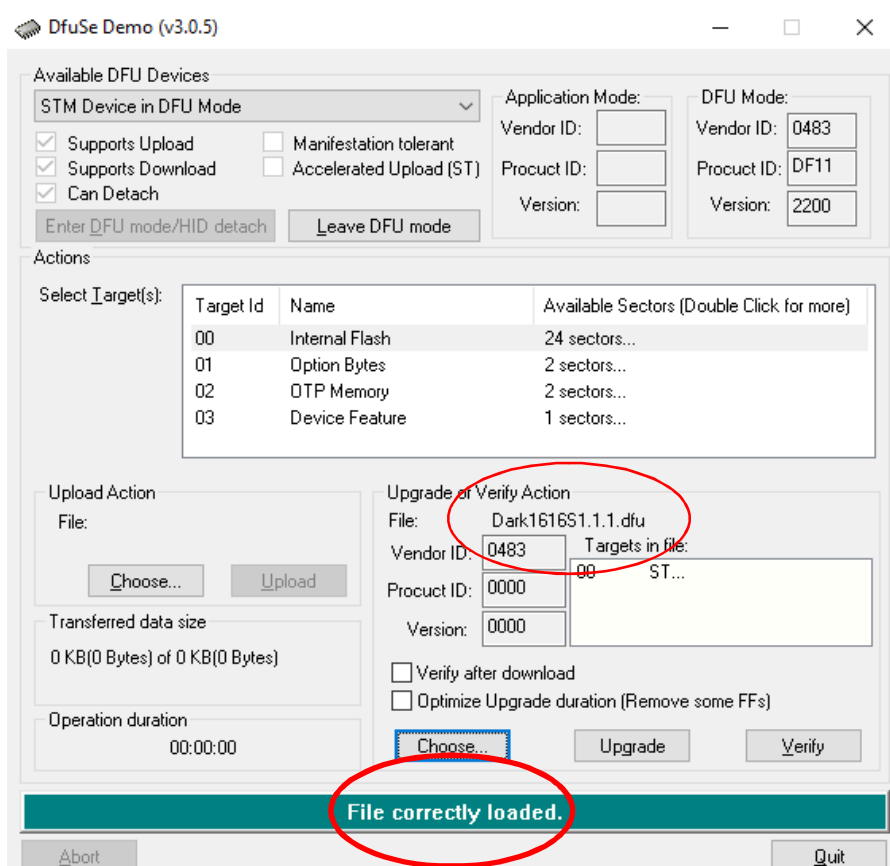
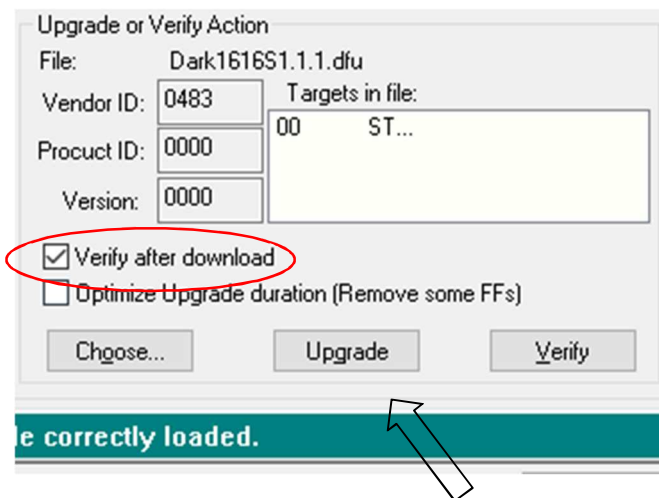


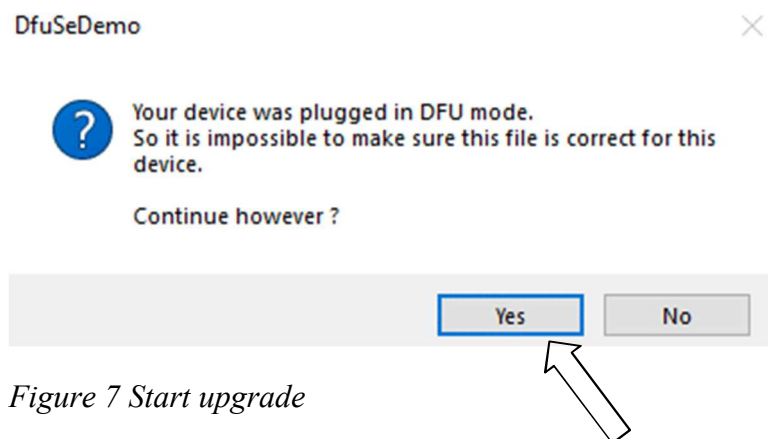
Figure 5 .dfu successfully loaded

The firmware is now ready to be put on to the STM32 Device. Tick the 'Verify after download' box first and then click 'Upgrade'.



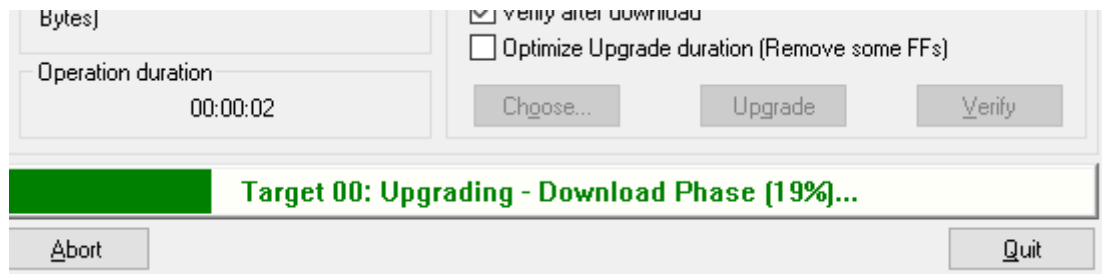
*Figure 6 Upgrade*

Click yes to proceed.



*Figure 7 Start upgrade*

The progress bar along the bottom will show the status of the operation.



*Figure 8 Upgrade status*

If the operation was successful, DfuSe Demo will report that “Target 00: Verify Successful!”.

You may also see that it will report how much data was successfully transferred.

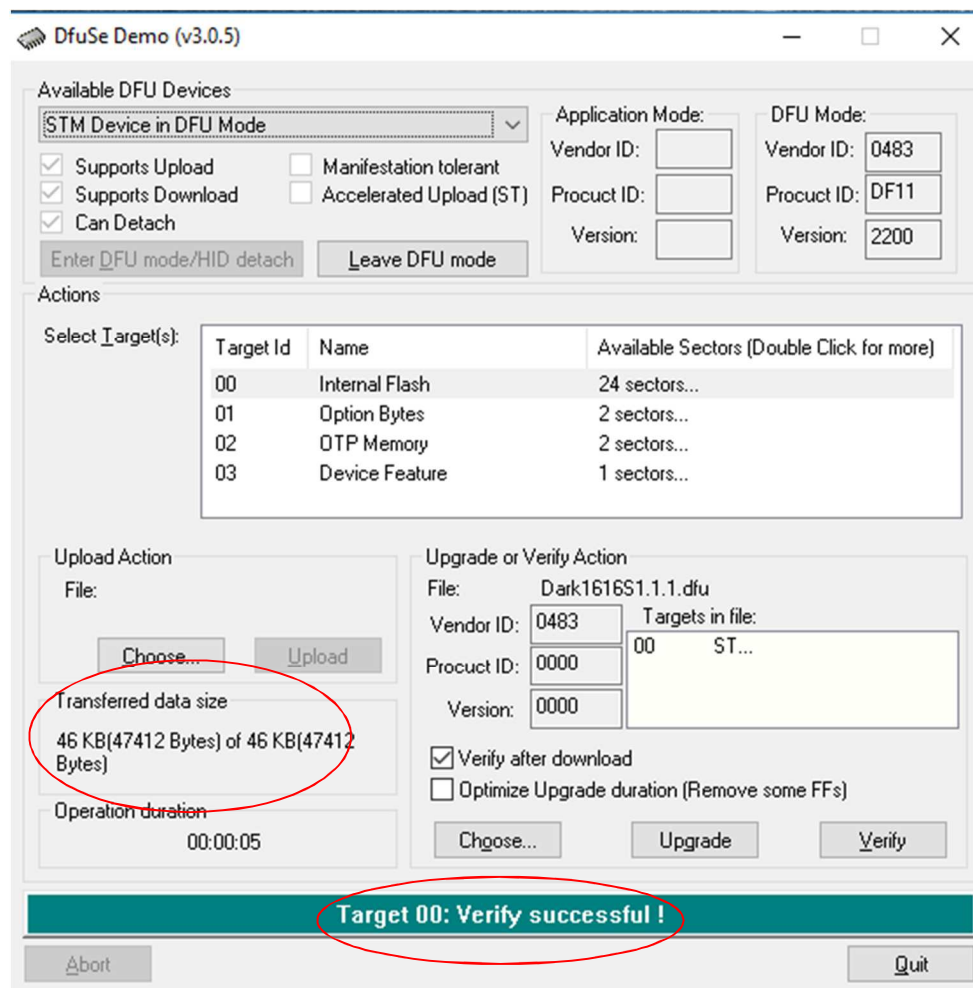


Figure 9 Successful upgrade!

## 7. Final steps

Now click “Leave DFU mode” to finish the procedure.

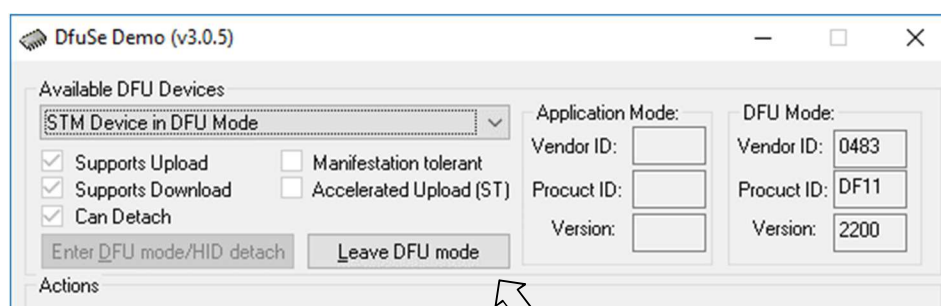


Figure 10 Final step

You may now disconnect the USB cable and continue to use the STM32 Device with the freshly updated firmware!

## 1. **Updating the Brooklyn module**

The Brooklyn module is a device supplied by Audinate that does most of the processing for the actual Dante®/ AES67 network audio streams. There is one Brooklyn module on each Mix32 mixer card. We supply special code that setup/ initiates the Brooklyn module and makes it work in particular way and we also run extra code on its internal microprocessor to make it work correctly with the Beatrice Mix32.

The firmware that runs on the Brooklyn module is updated using Audinate's Firmware updating tool. The updating tool and a user guide can be downloaded from Audinate's website:

<https://www.audinate.com/products/firmware-update-manager>

The actual firmware to install using the above tool will be supplied by support. It will be a .dnt file.

Please note we strongly advise that when you do the update that only your PC and the Beatrice Mix32 that you want to update are on the network to save accidentally updating the wrong Dante device.

## 2. **Multiple Mix Cards**

Each Beatrice Mix32 can be fitted with up to 4 off mixer cards.  
When updating firmware it is necessary to update each mix card separately.

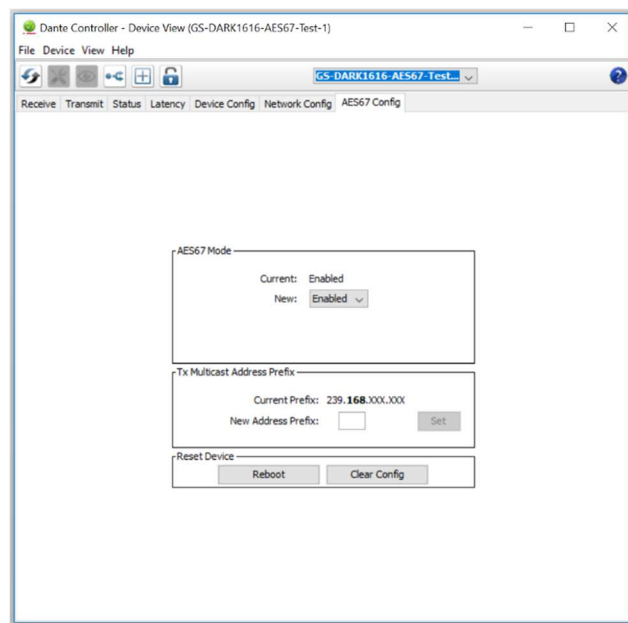
## **AES67 MODE**

The Mix32 uses a module from Audinate called a Brooklyn Module for its network audio interface. Audinate are the company behind Dante® and as such the module's primary network audio protocol is Dante®, however Audinate have enabled their module to comply with AES67 and therefore the Mix32 can be set to AES67 mode for interaction with other AES67 devices.

Please note however that GlenSound are relying on Audinate's AES67 interface and are unfortunately not able to provide full AES67 support for the unit. AES67 support should be sought directly from Audinate.

### **1. Turning On AES67 Mode**

If you want to use your Mix32 on an AES67 network and it has not been set to AES67 mode then this can be set in Dante controller by double clicking the Mix32 to open the Device View window where you will find an AES67 tab to enable AES67 support.




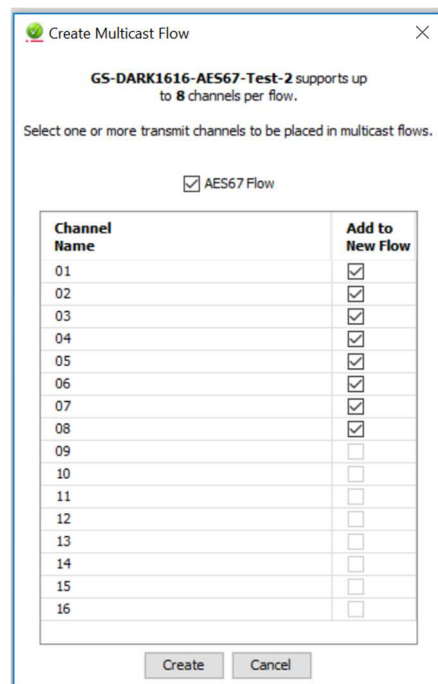
Once the AES67 drop down box has been enabled you'll have to reboot the Mix32 for the change to take effect. After the reboot go back to the AES67 tab and set the multicast prefix address to one that is suitable for your network.



## 2. Sending AES67 Audio

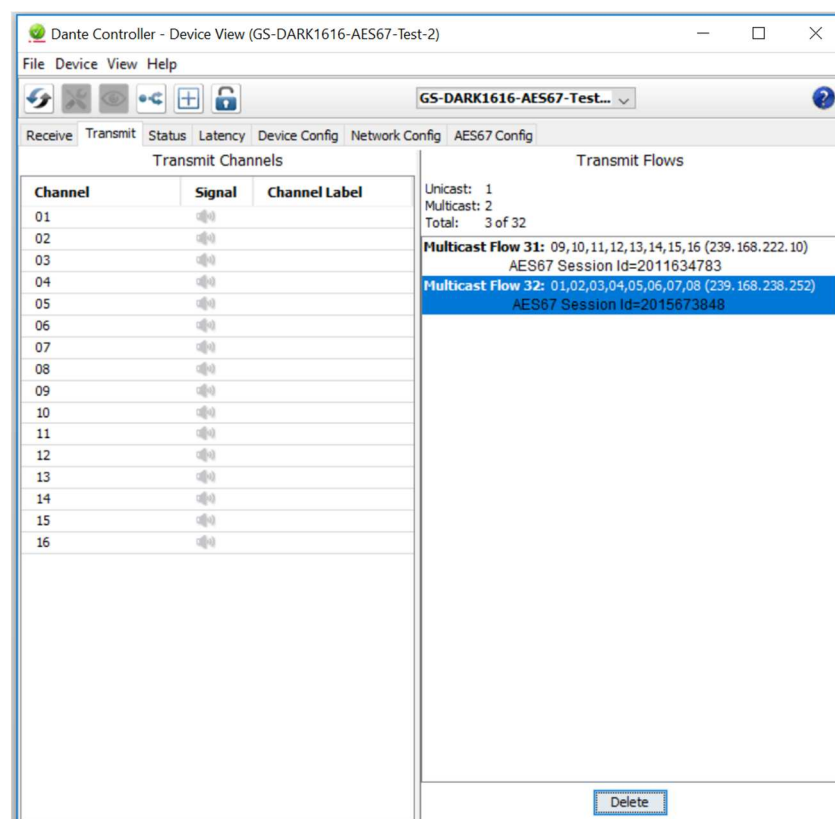
To transmit AES67 audio to the network a multicast flow must first be setup.

This is done by selecting the 'Create New Multicast Flow' Icon  in the Device View.



Tick the AES67 Flow check box, then select up to 8 channels to be included in the flow then click 'Create'

Once set the flows can be seen in the transmit tab of the device view.



### **3. Receiving AES67 Audio**

Once a compatible AES67 stream is detected on the network by Dante Controller the AES67 flows will appear in the Dante Transmitters section in the Routing tab.

### **4. AES67 Restrictions**

AES67 flows can only be generated with the following constraints:

- Multicast Only
- Non-redundant
- Destination address in range 239.nnn.0.0 to 239.nnn.255.255 (239.nnn/16), port 5004
- 48kHz sampling rate
- 24 bit linear (L24) encoding
- 1 msec packet time
- Up to 8 channels per stream

Received AES67 flows have the following constraints:

- Multicast Only
- Non-redundant
- Destination address in range 239.nnn.0.0 to 239.nnn.255.255 (239.nnn/16), port 5004. Must match destination address range.
- 48kHz sampling rate
- L16 or L24 encoding
- 125usec, 250usec, 333usec, 1 msec packet time
- Up to 8 channels per stream

## **SPECIFICATION**

### **NETWORK:**

**Physical Interface:** 2 x Copper Neutrik Ethercon  
2 x SFP (Fibre GBIC) Slots (SFP modules not included)

**Audio Sample Frequency:** Up to 96kS/s

**Transfer Rate:** 1000 Mbps

### **AUDIO:**

Audio inputs & outputs are entirely digital fed via the digital network. Internally audio is processed in a DSP with 32 bit resolution. Performance is expected to be completely flat and noise free, we cannot measure it as its performance exceeds the performance of our test equipment.

### **PHYSICAL:**

**Size:** 19" 1RU, 30cm deep  
**Weight:** 2.8Kg (1 mix card fitted)  
**Shipping Carton:** Rugged export quality cardboard  
**Shipping Size:** 62 x 42 x 12 cms  
**Shipping Weight:** 4.5Kg

### **POWER:**

**Quantity of Inputs:** 2  
**Physical Inputs:** IEC plug  
**Type of Input:** Fully redundant  
**Voltage Range:** 100 – 240 VAC +/-10%  
**Frequency:** 50 – 60 Hz  
**Consumption:** 14 Watts (1 x mix card fitted) then add 2 Watts for each extra mix card

### **INCLUDED ITEMS:**

**RJ45 Cable:** 2 off per mix card fitted  
**Mains Cable:** 2 off (UK & Europe only)