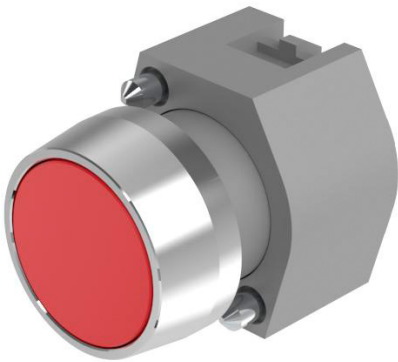


EAO – Your Expert Partner for Human Machine Interfaces

704.012.2 - Pushbutton round - Actuator

704.012.2 - Pushbutton round - Actuator



Attention: The preview is based on a sample product. This can differ from your current configuration.

Attribute

Design	raised
Front dimension	Ø 29 mm
Front form	round
Mounting cut-out	Ø 22.3 mm
Front bezel colour	Nature
Front bezel material	Aluminium
Front bezel surface	anodised
Housing colour	Grey
Housing material	Plastic
IP front protection	IP65
Lens colour	Red
Lens illumination	non illuminative
Lens material	Plastic
Lens optics	transparent
Lens shape	flush
Switching action	Momentary
Weight	0.04 kg

Schaltelement

max. number of switching elements	3
-----------------------------------	---

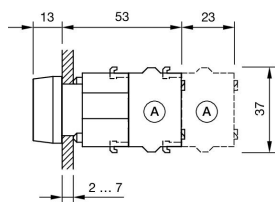
Function

Pushbutton

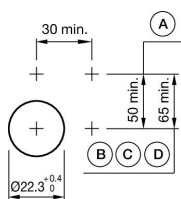
EAO – Your Expert Partner for Human Machine Interfaces

704.012.2 - Pushbutton round - Actuator

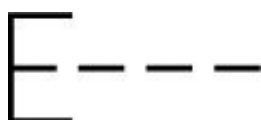
Dimensions



Mounting cut-outs



Wiring diagrams



Additional information

Max. 3 switching elements can be clipped on
Frontring with protective cover to be mounted with a torque of 0.4 Nm onto actuator
Frontring with protective cover to be mounted with a torque of 0.4 Nm onto actuator