



*Quality Products. Service Excellence.*

## Slim Wall and Floor Rack Cabinet *SDC Series*

Up to 800 lbs (363 kg) Weight Capacity



The SDC Series is a multi-use rack providing numerous options for equipment rack mounting. It is ideal for securing rack mount equipment in spaces where room for a traditional rack or cabinet is limited or not available. The modular design includes a body with numerous accessory options to suit your unique application.

### Features

- Available in 3U, 6U and 9U mounting heights.
- Available in 17.5", 24.5", 31.5" and 36" overall depths.
- 19" Mounting rail slots allow for adjustable depth rails and/or optional fan installation.
  - Mounting rails are easily removed for non-rack mounting equipment.
  - Starter pack of **CAGKIT1032-10** screws and cage nuts included with 3U units or **CAGKIT1032-50** screws and cage nuts included with 6U & 9U units.
- Removable cover panel for ease of equipment installation.
- Includes four (4) cutouts perfect for mounting over an electrical receptacle and/or for cable entry.
- Interior cable management lances.
- Removable plastic handles for side mounting storage.
- Optional surface mounted doors with quarter-turn lock and end cap available.



### Specifications

- Cabinet frame, removable cover and doors constructed in 16-gauge steel.
- Square hole 19" mounting rails are constructed in 12-gauge steel, include rack unit indicators, and are finished in smooth black powder paint.
- Suggest Load Ratings
  - Wall Mount (Rack Mounted) up to 150 lbs (68 kg).
  - Wall Mount (Rails removed) up to 50 lbs (22 kg).
  - Ceiling/ Under Desk Mount up to 150 lbs (68 kg).
  - Freestanding (with or without casters) up to 800 lbs (362 kg).
- Grounding studs provided on frame as well as side panels and doors.
- Finished in sand textured black powder paint.
- TAA compliant for GSA Schedule purchases.
- RoHS Compliant.
- Manufactured in North America.

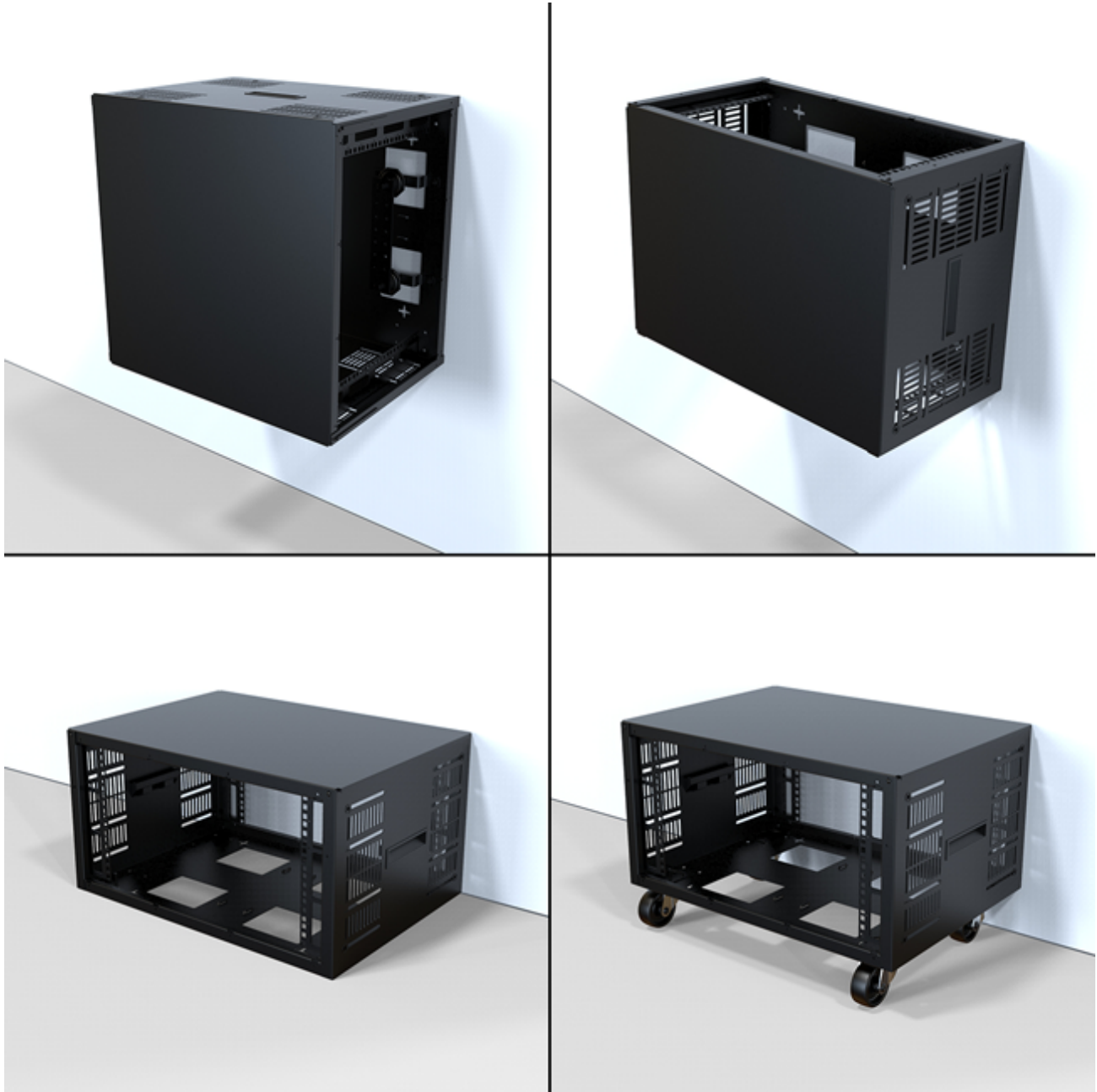
### Optional Accessory Features

- **Locking Vented Door** includes a quarter turn key lock. The 63% perforation provides airflow for either the front and/or rear of the frame.
- **Locking Cable/Fan Door** includes two openings for rear cable entry that maintain security while allowing cables to enter the cabinet. The door also includes laser knockout for optional **fan kits**.
- **Conduit/Fan Panel** mounts directly to either end of the cabinet providing secure mounting of 2.5", 2.0", 1.318", 1.314", 1.118" and/or 7/8" conduit knockouts. Also includes

laser knockouts for optional **fan kits**.

### Accessories

- Cable Management
- Magnet Panel Cover
- Fan Kits
- 10-32 Mounting Hardware
- Rack Panels
- Universal Rack Shelf
- Rack Unit Label
- PDUs and Outlet Strips



Part No.	Overall Dimensions			Rack Units	Mounting (Usable) Dimensions		
	Height	Width	Depth		Height	Width	Depth
SDC243U17BK	6.25	24.00	17.50	3U	5.25	19.00	15.50
SDC243U24BK	6.25	24.00	24.50	3U	5.25	19.00	22.50
SDC243U31BK	6.25	24.00	31.50	3U	5.25	19.00	29.50
SDC243U36BK	6.25	24.00	36.00	3U	5.25	19.00	34.00
SDC246U17BK	11.50	24.00	17.50	6U	10.50	19.00	15.50
SDC246U24BK	11.50	24.00	24.50	6U	10.50	19.00	22.50

Part No.	Overall Dimensions			Rack Units	Mounting (Usable) Dimensions		
	Height	Width	Depth		Height	Width	Depth
SDC246U31BK	11.50	24.00	31.50	6U	10.50	19.00	29.50
SDC246U36BK	11.50	24.00	36.00	6U	10.50	19.00	34.00
SDC249U17BK	16.75	24.00	17.50	9U	15.75	19.00	15.50
SDC249U24BK	16.75	24.00	24.50	9U	15.75	19.00	22.50
SDC249U31BK	16.75	24.00	31.50	9U	15.75	19.00	29.50
SDC249U36BK	16.75	24.00	36.00	9U	15.75	19.00	34.00

### Optional Accessories

Cabinet Rack Units	Solid Locking Door	Vented Locking Door	Cable Entry/ Fan Locking Door	Conduit/ Fan Cover Panel
3U	SDC3UD	SDC3UVD	SDC3USD	SDC3UCFP
6U	SDC6UD	SDC6UVD	SDC6USD	SDC6UCFP
9U	SDC9UD	SDC9UVD	SDC9USD	SDC9UCFP

### Optional Caster Kit

Part No.	Strength	Wheel Diameter	Overall Height		Hole Mounting Pattern		Caster Set Weight Capacity	Qty Included In Set	Qty with Brakes Included
			Added to Cabinet		Width	Depth			
1425BM	Medium Duty	3.00	3.81		1.75	3.00	700 lbs (318 kg)	4	0
1425BH	Heavy Duty	3.00	3.81		1.75	3.00	1,050 lbs (476 kg)	4	0
1425BHLOCK	Heavy Duty	3.00	3.81		1.75	3.00	1,050 lbs (476 kg)	4	4

Qty Included	Description	Replacement Part No.
1	Enclosure with installed cover	
10	10-32 screws and cage nuts	CAGKIT1032-10
1	Installation instructions	

Tags: **Wall Mount, Server, Ceiling Rack, Under Desk, Side-Mount Rack, Security Lock Box, Louver, Slim Wall Enclosure, Wall-Mount Server Rack**

*Data subject to change without notice*

© 2021. Hammond Manufacturing Ltd. All rights reserved.