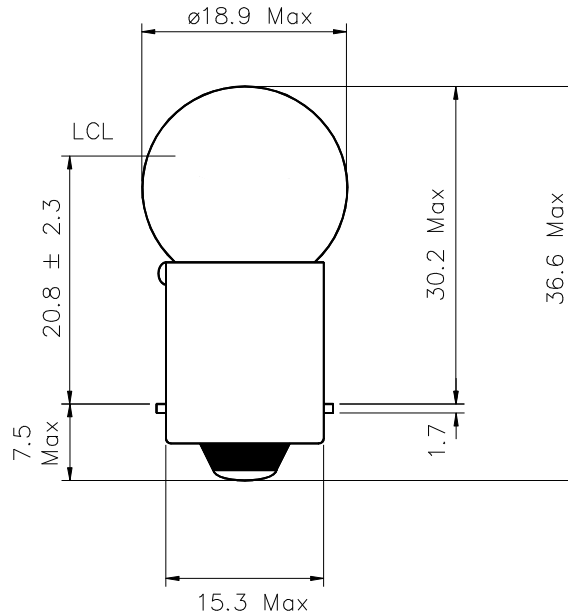


Part Number: 00000247

Type	Size	Rating	Description
Incandescent	G19	24V 5W	G-6 Double Contact Bayonet Lamp



Dimensions in mm.

TEST VOLTS	CURRENT (mA)			LIGHT OUTPUT (Lm)			LIFE Hours
	Min.	Nom.	Max.	Min.	Nom.	Max.	
28	-	268	-	-	35	-	-

Notes:

- 1 **Filament Shape** C-2F
- 2 **Base Type** BA15d Nickel plated brass
- 3 **Bead colour** White or clear
- 4 **Lamp Marking** 24V R5W with E mark
- 5 **Environmental** RoHS and REACH SVHC compliant