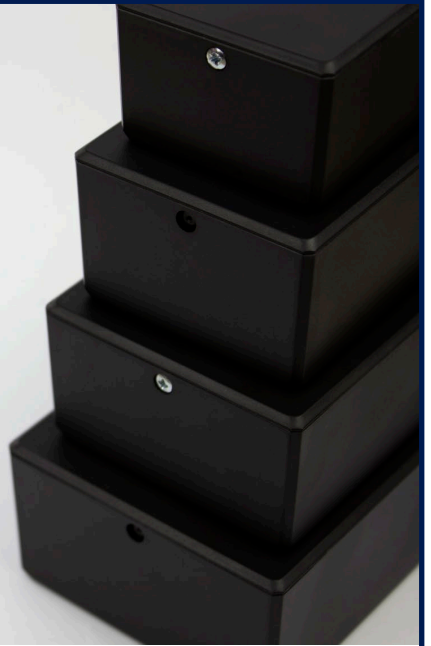




**CAMDENBOSS®**  
CONNECT. ENCLOSE. INNOVATE.



## Easy Assembly Electronics Enclosures by CamdenBoss

Our range of modern, robust and high quality Easy Assembly Electronics Enclosures are moulded from ABS UL94 V0 material and available in four sizes and three colours.

The enclosures benefit from a large unobstructed PCB footprint (allowing for edge-to-edge components) and have a range of features designed to save you money by reducing assembly time, because life is too short!



The modern look, textured finish and smooth internal walls mean that the Easy Assembly Electronics Enclosure is easily customisable on all sides. We can create machine cutouts, digital print or even engrave them.

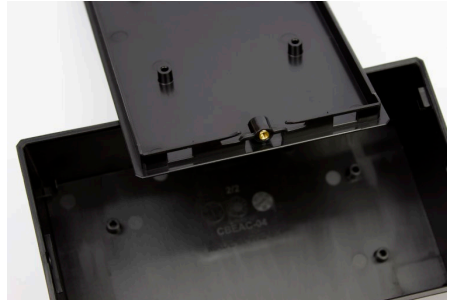


Maintenance is quick and easy, thanks to the dual action lid, held in place by either a push-button clip for super-fast assembly or a single screw for added security. Both provide quicker assembly over conventional lids.

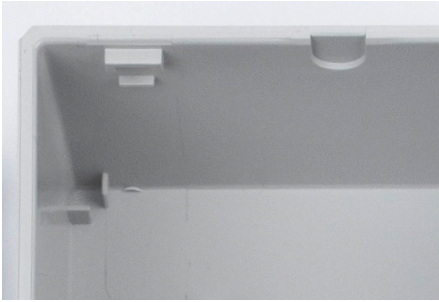
01638 716101 | [sales@camdenboss.com](mailto:sales@camdenboss.com) | [www.camdenboss.com](http://www.camdenboss.com)



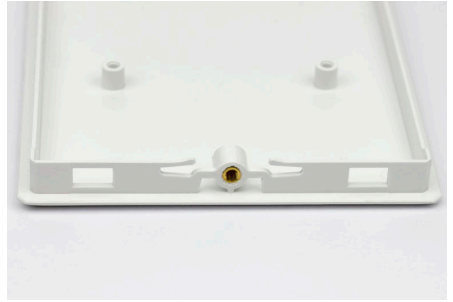
The PCB is supported around the perimeter of the base by card edge supports. Size 3 & 4 also have four half board central supports (which can be removed to make way for solder points on the bottom of your PCB).



Multiple PCB mounting points in the base and lid (sizes 1 & 2 have two mounting points in the lid and four in the base, sizes 3 and 4 have four mounting points in the lid and base), with minimal screws required.



No internal corner pillars, alleviates the need for unnecessarily oversized enclosures and creates a large unobstructed PCB footprint for rectangular PCBs in the base and lid.



The unique spring feature located at either end of the lid, can hold your PCB securely in place without the need for screws, greatly reducing the assembly time.



The size 1 PCB mounts in the lid fit the Raspberry Pi Zero and sizes 3 & 4 PCB mounts in lid fit the Raspberry Pi 3/4.



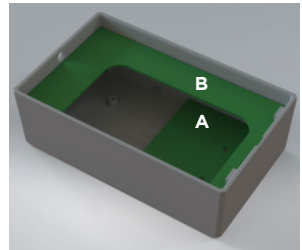
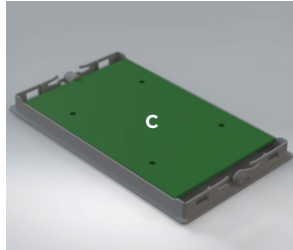
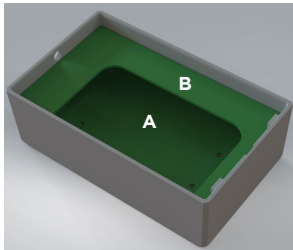
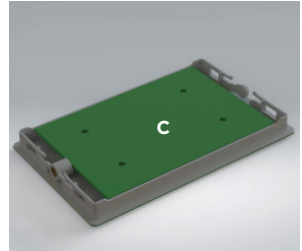
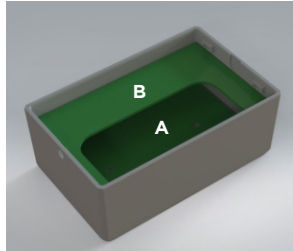
\*Contents of the enclosure are not included, modifications are for example purposes only.

Our in-house modification service can cut out holes for ports, meaning that the enclosure could house a graphics processor.

ENCLOSURE SIZE	SIZE 1	SIZE 2	SIZE 3	SIZE 4
PART NUMBER	CBEAC-01-(BK,WH,GY)	CBEAC-02-(BK,WH,GY)	CBEAC-03-(BK,WH,GY)	CBEAC-04-(BK,WH,GY)
EXTERIOR DIMENSIONS L x W x H	90mm x 60mm x 40mm	110mm x 70mm x 45mm	130mm x 80mm x 45mm	150mm x 90mm x 50mm

## PCB POSITIONS

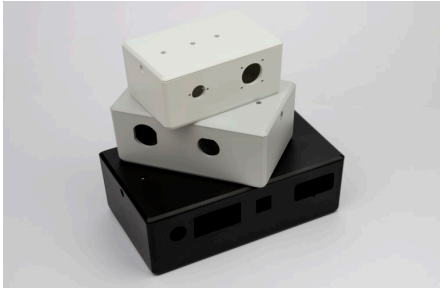
There are multiple positions for your PCB. The PCB can be screwed into the base (position A), screwed into the lid (position C) or, for easy assembly, into the base in position B without the need for screws, using our unique feature where the PCB is retained by the ledge and captivated by spring features in the lid.



### DIMENSIONS FOR EACH ENCLOSURE SIZE

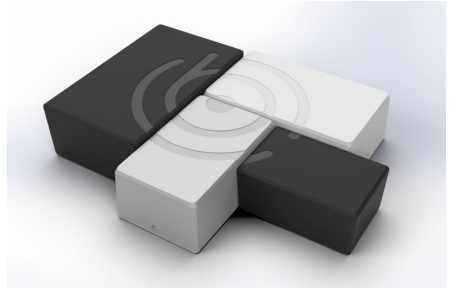
ENCLOSURE SIZE	PCB MOUNTING POSITION		PCB DIMENSIONS	
SIZE 1	BASE	A	Lower Screw Mounted	82mm x 52mm (end connector) / 80.5mm (side connectors)
		B	Upper Captivated	84mm x 53mm
	LID	C	Four Screw Mounts	68mm x 54mm
SIZE 2	BASE	A	Lower Screw Mounted	101.5mm x 61.5mm (end connector) / 100.5mm (side connector)
		B	Upper Captivated	104mm x 63mm
	LID	C	Four Screw Mounts	89mm x 61.5mm
SIZE 3	BASE	A	Lower Screw Mounted Full board	121.5mm x 71.5mm (end connector) / 121mm (side connector)
		A	Lower Screw Mounted Half Board	71.5mm x 45.3mm (central pillars) / 60.25mm (off centre pillars)
		B	Upper Captivated	124mm x 73mm
	LID	C	Four Screw Mounts	109mm x 71.5mm
SIZE 4	BASE	A	Lower Screw Mounted Full Board	141mm x 81mm (end connector & side connector)
		A	Lower Screw Mounted Half Board	81mm x 44.8mm (centre pillars) / 70mm (off centre pillars)
		B	Upper Captivated	144mm x 83mm
	LID	C	Four Screw Mounts	129mm x 81mm

## TAKE YOUR ENCLOSURE TO THE NEXT LEVEL



### CNC milling

We offer milling, drilling, tapping and countersinking meaning we can create slots, holes, features, light pipes, windows for every type of enclosure application.



### Printing and engraving

We can add your unique branding to the enclosure using our in-house digital printing and CNC engraving service; making customisation an easy and seamless process!

### Accessorize by purchasing either our Universal Wall Mount Bracket or DIN Rail Mount Bracket.



Learn more about the Easy Assembly Electronics Enclosure by visiting [www.camdenboss.com/Easy-Assembly-Electronics-Enclosure](http://www.camdenboss.com/Easy-Assembly-Electronics-Enclosure)



01638 716101 | [sales@camdenboss.com](mailto:sales@camdenboss.com) | [www.camdenboss.com](http://www.camdenboss.com)