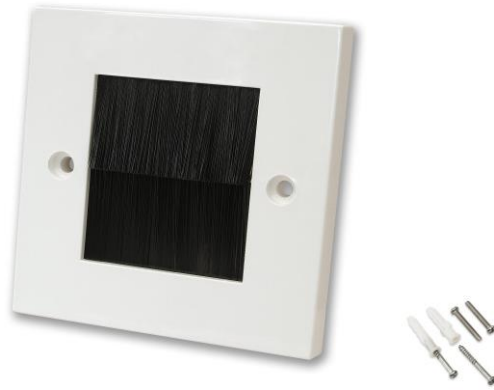




Item Code – SX6006B

Single Gang Brush Faceplate with Black Brush



- Hide unsightly Audio cables from view. Fits flush to the wall, no gaps!
- Two sets of screws supplied: for electrical backbox or direct wall mount type (with rawl plugs)
- 86x86mm Faceplate fits any standard single gang back box.
- 45x50mm Brush aperture will accept approximately 4 or 5 cables
- Flame retardant rated plastic faceplate frame (rated UL94V0) and brush (Nylon6)

Brush Faceplates are commonly used to hide Audio Visual cables behind walls and so giving a clean appearance to your home rather than bundles of wires hanging down the wall or trailing around in the living room. Two plates are usually installed, one for entrance and the other for the exit of cables. Commonly these are at the top and bottom of the wall where the equipment resides.

When fitted directly onto a wall without a back box it will sit cleanly flush with the surface as the brush frame is designed not to protrude past the back of the Faceplate. This is important if you are fixing direct on to a surface with no backbox.

NOTE; They are not intended for use alongside other wall sockets in the same channel where hazardous voltages may be accessible through the Brush Plate.

Barcode	5028088009963	
Dimension Packed	11x115x115mm	Height Width Depth
Dimension loose	86x86x10mm	Height Width Depth*
Weight Packed	0.041 kg	
Weight Loose	NA	
Inner Carton Qty	10	
Outer Carton Qty	200	

*as viewed in its installed orientation

Plate sits properly flush to the wall with no small gaps at the sides caused by brush module jutting out. Our plate does not use a module but a built-in brush as shown below



Rear view

Continued next page

