

Product datasheet

HE 35 W/840

LUMILUX T5 HE | Tubular fluorescent lamps 16 mm, high efficiency, with G5 base



- Public buildings Offices Shops Supermarkets and department stores Industry Outdoor applications only in suitable luminaires

- Good economy and efficiency Up to 20 % more economical than LUMILUX T8 Up to 50 % smaller volume than comparable T8 lamps



Technical data

Electrical data

Nominal voltage	220 V
Nominal wattage	35.00 W
Rated lamp efficacy (HF data 25 °C)	94 lm/W
Rated wattage	35.50 W

Photometrical data

Color rendering index Ra	≥80
Rated luminous flux	3320 lm
Luminous flux at	3320 lm
Luminous flux at	3650 lm
Light color	840
Rated color temperature	4000 K
Nominal luminous flux	3320 lm
Light color (designation)	LUMILUX Cool White
Rated LLMF at 2,000 h	0.95
Rated LLMF at 4,000 h	0.93
Rated LLMF at 6,000 h	0.92
Rated LLMF at 8,000 h	0.90
Rated LLMF at 12,000 h	0.90
Rated LLMF at 16,000 h	0.90
Rated LLMF at 20,000 h	0.89
Color temperature	4000 K
Luminous flux	3320 lm

Dimensions & weight



Tube diameter	16 mm
---------------	-------

Product datasheet

Length	1449 mm
Length with base excl. base pins/connection	1449.00 mm
Diameter	16.0 mm
Product weight	115.00 g
Outer bulb	T16
Maximum diameter	16.0 mm

Temperatures & operating conditions

Rated ambient temp.w.max.luminous flux	35.0 °C
--	---------

Lifespan

Service life	19000 h ¹⁾
Rated lamp survival factor at 2,000 h	0.99
Rated lamp survival factor at 4,000 h	0.99
Rated lamp survival factor at 6,000 h	0.99
Rated lamp survival factor at 8,000 h	0.99
Rated lamp survival factor at 12,000 h	0.99
Rated lamp survival factor at 16,000 h	0.97
Rated lamp survival factor at 20,000 h	0.85
Operation mode LLMF/LSF	HF
Rated lamp life time	24000 h

¹⁾ With preheat ECG

Additional product data

Base (standard designation)	G5
Mercury content	1.2 mg
Product remark	Suitable for ECG operation only/Lamp designed for internal luminaire temperatures of 30...40 °C; optimum luminous flux achieved at 35 °C
Appropriate disposal acc. to WEEE	Yes

Capabilities

Dimmable	Yes
Suitable for indoor	Yes

Certificates & standards

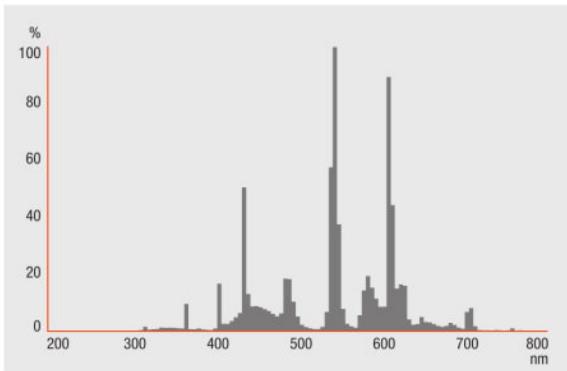
Energy efficiency class	A+
Energy consumption	40 kWh/1000h

Country specific categorizations

Product datasheet

Order reference	HE 35W/840
-----------------	------------

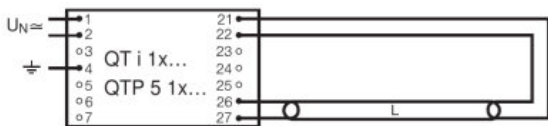
Light Distribution



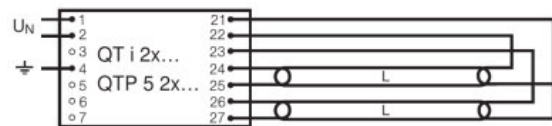
FL_840

System guarantee

OSRAM System+ Guarantee in combination with OSRAM ECGs



QUICKTRONIC INTELLIGENT QT i 1x QTP 5 1x



QUICKTRONIC INTELLIGENT QT i 2x QTP 5 2x

Logistical Data

Product datasheet

Product code	Product description	Packaging unit (Pieces/Unit)	Dimensions (length x width x height)	Volume	Gross weight
4050300464749	HE 35 W/840	Shipping carton box 40 Pieces Sleeves	1500 mm x 94 mm x 194 mm	27.35 dm ³	6258.00 g
4050300591445	HE 35 W/840	Shipping carton box 20 Pieces Sleeves	1482 mm x 83 mm x 104 mm	12.79 dm ³	3450.00 g

The mentioned product code describes the smallest quantity unit which can be ordered. One shipping unit can contain one or more single products. When placing an order, for the quantity please enter single or multiples of a shipping unit.

References / Links

For more information on the system guarantee and the terms and conditions of the guarantee visit

▶ www.osram.com/system-guarantee

Disclaimer

Subject to change without notice. Errors and omission excepted. Always make sure to use the most recent release.

OSRAM is distribution partner
of LEDVANCE of LAMPS

OSRAM

OSRAM GmbH
Marcel-Breuer-Strasse 6
80807 Munich, Germany

HE 35 W/840

LUMILUX T5 HE | Tubular fluorescent lamps 16 mm, high efficiency, with G5 base

Product name	Product name ECG	EAN	Nominal current	Nominal wattage + Power loss	Power factor λ [PIM]	Luminous flux at 35 °C
HE 35 W/840	QT-FIT 5 1x14-35	4008321971234	0.17 A	38.00 W	0.97	3200 lm
	QT-FIT 5 2x14-35	4008321971258	0.35 A	78.00 W	0.98	3300 lm
	QTi 1x14/24/21/39 GII	4008321383334	0.18 A	39.00 W	0.97	3300 lm
	QTi 1x28/54/35/49 GII	4008321383358	0.17 A	38.00 W	0.97	3300 lm
	QTi 1x35/49/80 DIM	4050300870540	0.17 A	37.80 W	0.96	3300 lm
	QTi 1x35/49/80 GII	4008321383372	0.17 A	38.00 W	0.97	3300 lm
	QTi 2x14/24/21/39 GII	4008321383396	0.35 A	76.00 W	0.96	3300 lm
	QTi 2x28/54/35/49 GII	4008321383419	0.35 A	76.00 W	0.96	3300 lm
	QTi 2x35/49/80 DIM	4050300870984	0.34 A	74.00 W	0.95	3300 lm
	QTi 2x35/49/80 GII	4008321658951	0.36 A	77.00 W	0.98	3400 lm
	QTi 2x35/49 DIM	4050300870670	0.33 A	74.50 W	0.95	3300 lm
	QTi DALI 1x35/49/80 DIM	4050300870342	0.17 A	37.80 W	0.95	3300 lm
	QTi DALI 2x35/49/80 DIM	4050300870441	0.34 A	74.00 W	0.98	3300 lm
	QTi DALI 2x35/49 DIM	4050300870403	0.33 A	74.50 W	0.98	3300 lm
	QTP5 1x14-35	4008321329035	0.17 A	38.00 W	0.97	3300 lm
	QTP5 2x14-35	4008321329073	0.33 A	75.00 W	0.98	3300 lm

Product datasheet

Product name	Product name ECG	EAN	Number of lighting outlets
HE 35 W/840	QT-FIT 5 1x14-35	4008321971234	1
	QT-FIT 5 2x14-35	4008321971258	2
	QTi 1x14/24/21/39 GII	4008321383334	1
	QTi 1x28/54/35/49 GII	4008321383358	1
	QTi 1x35/49/80 DIM	4050300870540	1
	QTi 1x35/49/80 GII	4008321383372	1
	QTi 2x14/24/21/39 GII	4008321383396	2
	QTi 2x28/54/35/49 GII	4008321383419	2
	QTi 2x35/49/80 DIM	4050300870984	2
	QTi 2x35/49/80 GII	4008321658951	2
	QTi 2x35/49 DIM	4050300870670	2
	QTi DALI 1x35/49/80 DIM	4050300870342	1
	QTi DALI 2x35/49/80 DIM	4050300870441	2
	QTi DALI 2x35/49 DIM	4050300870403	2
	QTP5 1x14-35	4008321329035	1
	QTP5 2x14-35	4008321329073	2