

# Product datasheet

## HO 49 W/865

LUMILUX T5 HO | Tubular fluorescent lamps 16 mm, high output, with G5 base

- Industry Public buildings Offices Tunnels, underpasses  
Car parks Outdoor applications only in suitable luminaires



- Excellent luminous flux Up to 20 % more economical than LUMILUX T8 Up to 50 % smaller volume than comparable T8 lamps



## Technical data

### Electrical data

|                                     |         |
|-------------------------------------|---------|
| Nominal voltage                     | 195 V   |
| Nominal wattage                     | 49.00 W |
| Rated lamp efficacy (HF data 25 °C) | 79 lm/W |
| Rated wattage                       | 49.00 W |

### Photometrical data

|                           |                       |
|---------------------------|-----------------------|
| Color rendering index Ra  | ≥80                   |
| Rated luminous flux       | 4100 lm               |
| Luminous flux at          | 4100 lm               |
| Luminous flux at          | 4600 lm               |
| Light color               | 865                   |
| Rated color temperature   | 6500 K                |
| Nominal luminous flux     | 4100 lm               |
| Light color (designation) | LUMILUX Cool Daylight |
| Rated LLMF at 2,000 h     | 0.95                  |
| Rated LLMF at 4,000 h     | 0.93                  |
| Rated LLMF at 6,000 h     | 0.92                  |
| Rated LLMF at 8,000 h     | 0.90                  |
| Rated LLMF at 12,000 h    | 0.90                  |
| Rated LLMF at 16,000 h    | 0.90                  |
| Rated LLMF at 20,000 h    | 0.89                  |
| Color temperature         | 6500 K                |
| Luminous flux             | 4100 lm               |

### Dimensions & weight



|               |       |
|---------------|-------|
| Tube diameter | 16 mm |
|---------------|-------|

## Product datasheet

|   |            |
|---|------------|
| Length                                      | 1449 mm    |
| Length with base excl. base pins/connection | 1449.00 mm |
| Diameter                                    | 16.0 mm    |
| Product weight                              | 121.00 g   |
| Outer bulb                                  | T16        |

### Temperatures & operating conditions

|  |         |
|--|---------|
| Rated ambient temp.w.max.luminous flux | 35.0 °C |
|--|---------|

### Lifespan

|  |                       |
|--|-----------------------|
| Service life                           | 19000 h <sup>1)</sup> |
| Lifespan                               | 24000 h <sup>1)</sup> |
| Rated lamp survival factor at 2,000 h  | 0.99                  |
| Rated lamp survival factor at 4,000 h  | 0.99                  |
| Rated lamp survival factor at 6,000 h  | 0.99                  |
| Rated lamp survival factor at 8,000 h  | 0.99                  |
| Rated lamp survival factor at 12,000 h | 0.99                  |
| Rated lamp survival factor at 16,000 h | 0.97                  |
| Rated lamp survival factor at 20,000 h | 0.85                  |
| Operation mode LLMF/LSF                | HF                    |
| Rated lamp life time                   | 24000 h               |

<sup>1)</sup> With preheat ECG

### Additional product data

|                                   |  |
|-----------------------------------|--|
| Base (standard designation)       | G5   |
| Mercury content                   | 1.7 mg   |
| Product remark                    | Suitable for ECG operation only/Lamp designed for internal luminaire temperatures of 30...40 °C; optimum luminous flux achieved at 35 °C |
| Appropriate disposal acc. to WEEE | Yes  |

### Capabilities

|                     |     |
|---------------------|-----|
| Dimmable            | Yes |
| Suitable for indoor | Yes |

### Certificates & standards

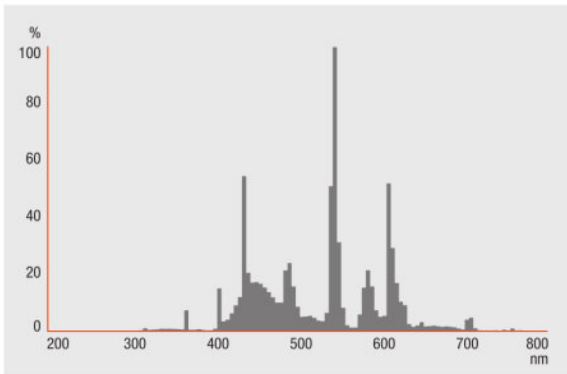
|                         |              |
|-------------------------|--------------|
| Energy efficiency class | A+           |
| Energy consumption      | 55 kWh/1000h |

### Country specific categorizations

## Product datasheet

|                 |            |
|-----------------|------------|
| Order reference | HO 49W/865 |
|-----------------|------------|

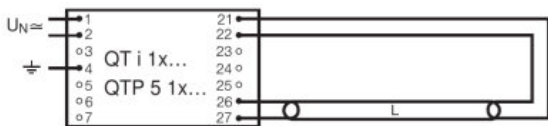
### Light Distribution



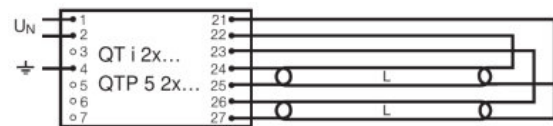
FL\_865

### System guarantee

OSRAM System+ Guarantee in combination with OSRAM ECGs



QUICKTRONIC INTELLIGENT QT i 1x QTP 5 1x



QUICKTRONIC INTELLIGENT QT i 2x QTP 5 2x

### Logistical Data

## Product datasheet

| Product code  | Product description | Packaging unit<br>(Pieces/Unit)          | Dimensions (length<br>x width x height) | Volume                | Gross weight |
|---------------|---------------------|--|---|-----------------------|--------------|
| 4050300796628 | HO 49 W/865         | Shipping carton box<br>20 Pieces Sleeves | 1482 mm x 83 mm x<br>104 mm             | 12.79 dm <sup>3</sup> | 3450.00 g    |

The mentioned product code describes the smallest quantity unit which can be ordered. One shipping unit can contain one or more single products. When placing an order, for the quantity please enter single or multiples of a shipping unit.

### References / Links

For more information on the system guarantee and the terms and conditions of the guarantee visit

▶ [www.osram.com/system-guarantee](http://www.osram.com/system-guarantee)

### Disclaimer

Subject to change without notice. Errors and omission excepted. Always make sure to use the most recent release.

OSRAM is distribution partner  
of LEDVANCE of LAMPS

**OSRAM**

OSRAM GmbH  
Marcel-Breuer-Strasse 6  
80807 Munich, Germany

## HO 49 W/865

LUMILUX T5 HO | Tubular fluorescent lamps 16 mm, high output, with G5 base

| Product name | Product name ECG        | EAN           | Nominal current | Nominal wattage + Power loss | Power factor $\lambda$ [PIM] | Luminous flux at 35 °C |
|--------------|-------------------------|---------------|-----------------|------------------------------|------------------------------|------------------------|
| HO 49 W/865  | QT-FIT 5 1x49           | 4008321832139 | 0.24 A          | 54.00 W                      | 0.98                         | 4300 lm                |
|              | QT-FIT 5 2x49           | 4008321832153 | 0.47 A          | 106.00 W                     | 0.98                         | 4300 lm                |
|              | QTi 1x28/54/35/49 GII   | 4008321383358 | 0.24 A          | 53.00 W                      | 0.97                         | 4300 lm                |
|              | QTi 1x35/49/80 DIM      | 4050300870540 | 0.24 A          | 53.40 W                      | 0.98                         | 4300 lm                |
|              | QTi 1x35/49/80 GII      | 4008321383372 | 0.24 A          | 53.00 W                      | 0.97                         | 4300 lm                |
|              | QTi 2x28/54/35/49 GII   | 4008321383419 | 0.46 A          | 105.00 W                     | 0.98                         | 4300 lm                |
|              | QTi 2x35/49/80 DIM      | 4050300870984 | 0.46 A          | 103.00 W                     | 0.97                         | 4300 lm                |
|              | QTi 2x35/49/80 GII      | 4008321658951 | 0.45 A          | 105.00 W                     | 0.99                         | 4300 lm                |
|              | QTi 2x35/49 DIM         | 4050300870670 | 0.45 A          | 103.60 W                     | 0.97                         | 4300 lm                |
|              | QTi DALI 1x35/49/80 DIM | 4050300870342 | 0.24 A          | 53.40 W                      | 0.98                         | 4300 lm                |
|              | QTi DALI 2x35/49/80 DIM | 4050300870441 | 0.46 A          | 101.00 W                     | 0.99                         | 4300 lm                |
|              | QTi DALI 2x35/49 DIM    | 4050300870403 | 0.45 A          | 103.60 W                     | 0.99                         | 4300 lm                |
|              | QTP5 1x49               | 4008321329370 | 0.24 A          | 53.00 W                      | 0.95                         |                        |
|              | QTP5 1x49               | 4008321329370 | 0.24 A          | 53.00 W                      | 0.95                         | 4300 lm                |
|              | QTP5 2x49               | 4008321329431 | 0.49 A          | 106.00 W                     | 0.99                         |                        |
|              | QTP5 2x49               | 4008321329431 | 0.49 A          | 106.00 W                     | 0.99                         | 4300 lm                |

## Product datasheet

| Product name | Product name ECG        | EAN           | Number of lighting outlets |
|--------------|-------------------------|---------------|----------------------------|
| HO 49 W/865  | QT-FIT 5 1x49           | 4008321832139 | 1                          |
|              | QT-FIT 5 2x49           | 4008321832153 | 2                          |
|              | QTi 1x28/54/35/49 GII   | 4008321383358 | 1                          |
|              | QTi 1x35/49/80 DIM      | 4050300870540 | 1                          |
|              | QTi 1x35/49/80 GII      | 4008321383372 | 1                          |
|              | QTi 2x28/54/35/49 GII   | 4008321383419 | 2                          |
|              | QTi 2x35/49/80 DIM      | 4050300870984 | 2                          |
|              | QTi 2x35/49/80 GII      | 4008321658951 | 2                          |
|              | QTi 2x35/49 DIM         | 4050300870670 | 2                          |
|              | QTi DALI 1x35/49/80 DIM | 4050300870342 | 1                          |
|              | QTi DALI 2x35/49/80 DIM | 4050300870441 | 2                          |
|              | QTi DALI 2x35/49 DIM    | 4050300870403 | 2                          |
|              | QTP5 1x49               | 4008321329370 | 1                          |
|              | QTP5 1x49               | 4008321329370 | 1                          |
|              | QTP5 2x49               | 4008321329431 | 2                          |
|              | QTP5 2x49               | 4008321329431 | 2                          |