

# Product datasheet

## HO 54 W/840

LUMILUX T5 HO | Tubular fluorescent lamps 16 mm, high output, with G5 base

- Industry Public buildings Offices Tunnels, underpasses  
Car parks Outdoor applications only in suitable luminaires



- Excellent luminous flux Up to 20 % more economical than LUMILUX T8 Up to 50 % smaller volume than comparable T8 lamps



## Product datasheet

### Technical data

#### Electrical data

Nominal voltage	120 V
Nominal wattage	54.00 W
Rated lamp efficacy (HF data 25 °C)	82 lm/W
Rated wattage	54.10 W

#### Photometrical data

Color rendering index Ra	≥80
Rated luminous flux	4450 lm
Luminous flux at	4450 lm
Luminous flux at	5000 lm
Light color	840
Rated color temperature	4000 K
Nominal luminous flux	4450 lm
Light color (designation)	LUMILUX Cool White
Rated LLMF at 2,000 h	0.95
Rated LLMF at 4,000 h	0.93
Rated LLMF at 6,000 h	0.92
Rated LLMF at 8,000 h	0.90
Rated LLMF at 12,000 h	0.90
Rated LLMF at 16,000 h	0.90
Rated LLMF at 20,000 h	0.89
Color temperature	4000 K
Luminous flux	4450 lm

#### Dimensions & weight



Tube diameter	16 mm
---------------	-------

## Product datasheet

Length	1149 mm
Length with base excl. base pins/connection	1149.00 mm
Diameter	16.0 mm
Product weight	90.00 g
Outer bulb	T16
Maximum diameter	16.0 mm

### Temperatures & operating conditions

Rated ambient temp.w.max.luminous flux	35.0 °C
--	---------

### Lifespan

Service life	19000 h <sup>1)</sup>
Lifespan	24000 h <sup>1)</sup>
Rated lamp survival factor at 2,000 h	0.99
Rated lamp survival factor at 4,000 h	0.99
Rated lamp survival factor at 6,000 h	0.99
Rated lamp survival factor at 8,000 h	0.99
Rated lamp survival factor at 12,000 h	0.99
Rated lamp survival factor at 16,000 h	0.97
Rated lamp survival factor at 20,000 h	0.85
Operation mode LLMF/LSF	HF
Rated lamp life time	24000 h

<sup>1)</sup> With preheat ECG

### Additional product data

Base (standard designation)	G5
Mercury content	1.7 mg
Product remark	Suitable for ECG operation only/Lamp designed for internal luminaire temperatures of 30...40 °C; optimum luminous flux achieved at 35 °C
Appropriate disposal acc. to WEEE	Yes

### Capabilities

Dimmable	Yes
Suitable for indoor	Yes

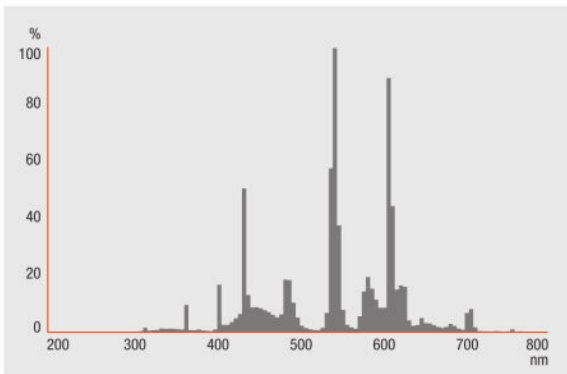
### Certificates & standards

Energy efficiency class	A+
Energy consumption	60 kWh/1000h

Country specific categorizations

Order reference	HO 54W/840
-----------------	------------

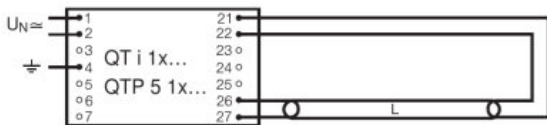
Light Distribution



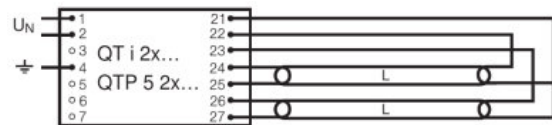
FL\_840

System guarantee

OSRAM System+ Guarantee in combination with OSRAM ECGs



QUICKTRONIC INTELLIGENT QT i 1x QTP 5 1x



QUICKTRONIC INTELLIGENT QT i 2x QTP 5 2x

## Product datasheet

### Logistical Data

Product code	Product description	Packaging unit (Pieces/Unit)	Dimensions (length x width x height)	Volume	Gross weight
4050300453392	HO 54 W/840	Shipping carton box 40 Pieces Sleeves	1200 mm x 83 mm x 194 mm	19.32 dm <sup>3</sup>	4713.00 g
4050300591582	HO 54 W/840	Shipping carton box 20 Pieces Sleeves	1182 mm x 83 mm x 91 mm	8.93 dm <sup>3</sup>	2662.50 g

The mentioned product code describes the smallest quantity unit which can be ordered. One shipping unit can contain one or more single products. When placing an order, for the quantity please enter single or multiples of a shipping unit.

### References / Links

For more information on the system guarantee and the terms and conditions of the guarantee visit

▶ [www.osram.com/system-guarantee](http://www.osram.com/system-guarantee)

### Disclaimer

Subject to change without notice. Errors and omission excepted. Always make sure to use the most recent release.

OSRAM is distribution partner  
of LEDVANCE of LAMPS

**OSRAM**

OSRAM GmbH  
Marcel-Breuer-Strasse 6  
80807 Munich, Germany

## HO 54 W/840

LUMILUX T5 HO | Tubular fluorescent lamps 16 mm, high output, with G5 base

Product name	Product name ECG	EAN	Nominal current	Nominal wattage + Power loss	Power factor $\lambda$ [PIM]	Luminous flux at 35 °C
HO 54 W/840	QT-FIT 5/8 1x54-58	4008321873828	0.25 A	59.00 W	0.98	4450 lm
	QT-FIT 5/8 2x54-58	4008321873842	0.49 A	116.00 W	0.98	4450 lm
	QTi 1x28/54/35/49 GII	4008321383358	0.26 A	58.00 W	0.97	4450 lm
	QTi 1x28/54 DIM	4050300870588	0.26 A	58.80 W	0.99	4450 lm
	QTi 2x28/54/35/49 GII	4008321383419	0.51 A	115.00 W	0.98	4450 lm
	QTi 2x28/54 DIM	4050300870717	0.51 A	115.00 W	0.98	4450 lm
	QTi DALI 1x28/54 DIM	4050300870809	0.26 A	58.80 W	0.99	4450 lm
	QTi DALI 2x28/54 DIM	4050300870502	0.51 A	115.00 W	0.99	4450 lm
	QTP-OPTIMAL 1x54-58	4008321873729	0.26 A	54.00 W	0.98	4450 lm
	QTP-OPTIMAL 2x54-58	4008321880253	0.52 A	120.00 W	0.99	4450 lm

Product name	Product name ECG	EAN	Number of lighting outlets
HO 54 W/840	QT-FIT 5/8 1x54-58	4008321873828	1
	QT-FIT 5/8 2x54-58	4008321873842	2
	QTi 1x28/54/35/49 GII	4008321383358	1
	QTi 1x28/54 DIM	4050300870588	1
	QTi 2x28/54/35/49 GII	4008321383419	2

## Product datasheet

Product name	Product name ECG	EAN	Number of lighting outlets
	QTi 2x28/54 DIM	4050300870717	2
	QTi DALI 1x28/54 DIM	4050300870809	1
	QTi DALI 2x28/54 DIM	4050300870502	2
	QTP-OPTIMAL 1x54-58	4008321873729	1
	QTP-OPTIMAL 2x54-58	4008321880253	2