

Product datasheet

HO 80 W/840

LUMILUX T5 HO | Tubular fluorescent lamps 16 mm, high output, with G5 base

- Industry Public buildings Offices Tunnels, underpasses
Car parks Outdoor applications only in suitable luminaires



- Excellent luminous flux Up to 20 % more economical than LUMILUX T8 Up to 50 % smaller volume than comparable T8 lamps



Product datasheet

Technical data

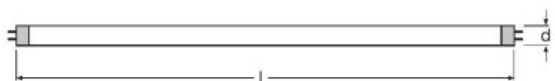
Electrical data

Nominal voltage	230 V
Nominal wattage	80.00 W
Rated lamp efficacy (HF data 25 °C)	77 lm/W
Rated wattage	79.80 W

Photometrical data

Color rendering index Ra	≥80
Rated luminous flux	6150 lm
Luminous flux at	6150 lm
Luminous flux at	7000 lm
Light color	840
Rated color temperature	4000 K
Nominal luminous flux	6150 lm
Light color (designation)	LUMILUX Cool White
Rated LLMF at 2,000 h	0.95
Rated LLMF at 4,000 h	0.93
Rated LLMF at 6,000 h	0.92
Rated LLMF at 8,000 h	0.90
Rated LLMF at 12,000 h	0.90
Rated LLMF at 16,000 h	0.90
Rated LLMF at 20,000 h	0.89
Color temperature	4000 K
Luminous flux	6150 lm

Dimensions & weight



Tube diameter	16 mm
---------------	-------

Product datasheet

Length	1449 mm
Length with base excl. base pins/connection	1449.00 mm
Diameter	16.0 mm
Product weight	115.00 g
Outer bulb	T16
Maximum diameter	16.0 mm

Temperatures & operating conditions

Rated ambient temp.w.max.luminous flux	35.0 °C
--	---------

Lifespan

Service life	19000 h ¹⁾
Lifespan	24000 h ¹⁾
Rated lamp survival factor at 2,000 h	0.99
Rated lamp survival factor at 4,000 h	0.99
Rated lamp survival factor at 6,000 h	0.99
Rated lamp survival factor at 8,000 h	0.99
Rated lamp survival factor at 12,000 h	0.99
Rated lamp survival factor at 16,000 h	0.97
Rated lamp survival factor at 20,000 h	0.85
Operation mode LLMF/LSF	HF
Rated lamp life time	24000 h

¹⁾ With preheat ECG

Additional product data

Base (standard designation)	G5
Mercury content	1.7 mg
Product remark	Suitable for ECG operation only/Lamp designed for internal luminaire temperatures of 30...40 °C; optimum luminous flux achieved at 35 °C
Appropriate disposal acc. to WEEE	Yes

Capabilities

Dimmable	Yes
Suitable for indoor	Yes

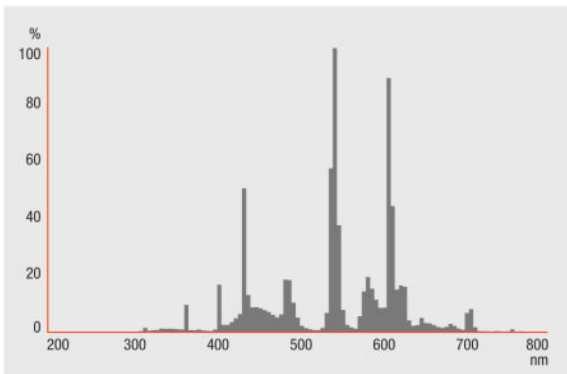
Certificates & standards

Energy efficiency class	A
Energy consumption	88 kWh/1000h

Country specific categorizations

Order reference	HO 80W/840
-----------------	------------

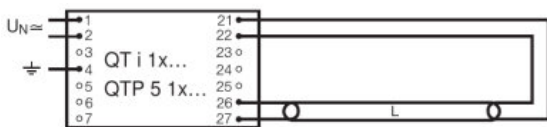
Light Distribution



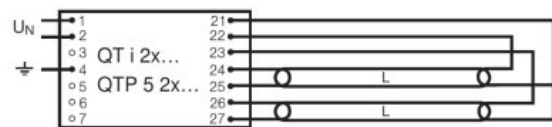
FL_840

System guarantee

OSRAM System+ Guarantee in combination with OSRAM ECGs



QUICKTRONIC INTELLIGENT QT i 1x QTP 5 1x



QUICKTRONIC INTELLIGENT QT i 2x QTP 5 2x

Product datasheet

Logistical Data

Product code	Product description	Packaging unit (Pieces/Unit)	Dimensions (length x width x height)	Volume	Gross weight
4050300515151	HO 80 W/840	Shipping carton box 40 Pieces Sleeves	1500 mm x 83 mm x 194 mm	24.15 dm ³	6258.00 g
4050300591841	HO 80 W/840	Shipping carton box 20 Pieces Sleeves	1482 mm x 83 mm x 104 mm	12.79 dm ³	3450.00 g

The mentioned product code describes the smallest quantity unit which can be ordered. One shipping unit can contain one or more single products. When placing an order, for the quantity please enter single or multiples of a shipping unit.

References / Links

For more information on the system guarantee and the terms and conditions of the guarantee visit

▶ www.osram.com/system-guarantee

Disclaimer

Subject to change without notice. Errors and omission excepted. Always make sure to use the most recent release.

OSRAM is distribution partner
of LEDVANCE of LAMPS

OSRAM

OSRAM GmbH
Marcel-Breuer-Strasse 6
80807 Munich, Germany

HO 80 W/840

LUMILUX T5 HO | Tubular fluorescent lamps 16 mm, high output, with G5 base

Product name	Product name ECG	EAN	Nominal current	Nominal wattage + Power loss	Power factor λ [PIM]	Luminous flux at 35 °C
HO 80 W/840	QT-FQ 2x80	4050300825564	0.76 A	175.00 W	0.98	6300 lm
	QTi 1x35/49/80 DIM	4050300870540	0.39 A	88.10 W	0.99	6150 lm
	QTi 1x35/49/80 GII	4008321383372	0.38 A	85.00 W	0.98	6150 lm
	QTi 2x35/49/80 DIM	4050300870984	0.74 A	165.00 W	0.99	6150 lm
	QTi 2x35/49/80 GII	4008321658951	0.70 A	167.00 W	0.99	6150 lm
	QTi DALI 1x35/49/80 DIM	4050300870342	0.39 A	88.10 W	0.99	6150 lm
	QTi DALI 2x35/49/80 DIM	4050300870441	0.74 A	165.00 W	0.99	6150 lm
	QTP5 1x80	4008321329059	0.38 A	86.00 W	0.98	6150 lm

Product name	Product name ECG	EAN	Number of lighting outlets
HO 80 W/840	QT-FQ 2x80	4050300825564	2
	QTi 1x35/49/80 DIM	4050300870540	1
	QTi 1x35/49/80 GII	4008321383372	1
	QTi 2x35/49/80 DIM	4050300870984	2
	QTi 2x35/49/80 GII	4008321658951	2
	QTi DALI 1x35/49/80 DIM	4050300870342	1
	QTi DALI 2x35/49/80 DIM	4050300870441	2

Product datasheet

Product name	Product name ECG	EAN	Number of lighting outlets
	QTP5 1x80	4008321329059	1