

CT310LS-IT8-M

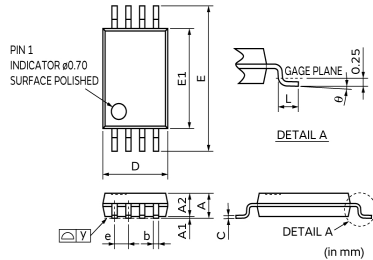
In Production

Recommended

RoHS

REACH

Appearance & Shape



Symbol	Dimensions in Millimeters (mm)			Symbol	Dimensions in Millimeters (mm)		
	Min.	Typ.	Max.		Min.	Typ.	Max.
A	1.05	1.10	1.20	E	6.20	6.40	6.60
A1	0.05	0.10	0.15	E1	4.30	4.40	4.50
A2	-	1.00	1.05	e	-	0.65	-
b	0.25	-	0.30	L	0.50	0.60	0.70
C	-	0.127	-	y	-	-	0.076
D	2.90	3.05	3.10	θ	0°	4°	8°

Packaging Information

Packaging	Specifications	Standard Packing Quantity
-	330mm Embossed Tape	3000

Attention

- 1.This datasheet is downloaded from the website of Murata Manufacturing Co., Ltd. Therefore, it's specifications are subject to change or our products in it may be discontinued without advance notice. Please check with our sales representatives or product engineers before ordering.
- 2.This datasheet has only typical specifications because there is no space for detailed specifications. Therefore, please review our product specifications or consult the approval sheet for product specifications before ordering.

CT310LS-IT8-M

Specifications

PKG	TSSOP
Product Type	2D Angular Sensor
Supply Voltage Range	1.0V to 5.5V
Operating Temperature Range	-40°C to 85°C
Operating Magnetic Field Range	25mT to 90mT
Angular Range	360°
Angular Error	0.25°

Attention

1.This datasheet is downloaded from the website of Murata Manufacturing Co., Ltd. Therefore, it's specifications are subject to change or our products in it may be discontinued without advance notice. Please check with our sales representatives or product engineers before ordering.

2.This datasheet has only typical specifications because there is no space for detailed specifications.

Therefore, please review our product specifications or consult the approval sheet for product specifications before ordering.