

CT310LS-HT8-M

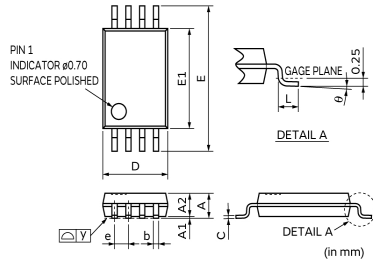
In Production

Recommended

RoHS

REACH

Appearance & Shape



| Symbol | Dimensions in Millimeters (mm) | | | Symbol | Dimensions in Millimeters (mm) | | |
|--------|--------------------------------|-------|------|--------|--------------------------------|------|-------|
| | Min. | Typ. | Max. | | Min. | Typ. | Max. |
| A | 1.05 | 1.10 | 1.20 | E | 6.20 | 6.40 | 6.60 |
| A1 | 0.05 | 0.10 | 0.15 | E1 | 4.30 | 4.40 | 4.50 |
| A2 | - | 1.00 | 1.05 | e | - | 0.65 | - |
| b | 0.25 | - | 0.30 | L | 0.50 | 0.60 | 0.70 |
| C | - | 0.127 | - | y | - | - | 0.076 |
| D | 2.90 | 3.05 | 3.10 | θ | 0° | 4° | 8° |

Packaging Information

| Packaging | Specifications | Standard Packing Quantity |
|-----------|---------------------|---------------------------|
| - | 330mm Embossed Tape | 3000 |

Attention

- 1.This datasheet is downloaded from the website of Murata Manufacturing Co., Ltd. Therefore, it's specifications are subject to change or our products in it may be discontinued without advance notice. Please check with our sales representatives or product engineers before ordering.
- 2.This datasheet has only typical specifications because there is no space for detailed specifications. Therefore, please review our product specifications or consult the approval sheet for product specifications before ordering.

CT310LS-HT8-M

Specifications

| | |
|--------------------------------|-------------------|
| PKG | TSSOP |
| Product Type | 2D Angular Sensor |
| Supply Voltage Range | 1.0V to 5.5V |
| Operating Temperature Range | -40°C to 125°C |
| Operating Magnetic Field Range | 25mT to 90mT |
| Angular Range | 360° |
| Angular Error | 0.25° |

Attention

- 1.This datasheet is downloaded from the website of Murata Manufacturing Co., Ltd. Therefore, it's specifications are subject to change or our products in it may be discontinued without advance notice. Please check with our sales representatives or product engineers before ordering.
- 2.This datasheet has only typical specifications because there is no space for detailed specifications.
Therefore, please review our product specifications or consult the approval sheet for product specifications before ordering.