

R&S® HMP Series

Release Notes

Firmware Version 2.70



© 2021 Rohde & Schwarz GmbH & Co. KG
Muehldorfstr. 15, 81671 Munich, Germany
Phone: +49 89 41 29 - 0
Fax: +49 89 41 29 12 - 164
E-mail: <mailto:info@rohde-schwarz.com>
Internet: <http://www.rohde-schwarz.com>

Subject to change

R&S® is a registered trademark of Rohde & Schwarz GmbH & Co. KG. Trade names are trademarks of the owners.

5800.4292.00 | Version 2.70 | R&S® HMP Series

The software makes use of several valuable open source software packages. For information, see the "Open Source Acknowledgment" provided with the product.

The following abbreviations are used throughout this document: R&S®

[R&S HMP Series Information on the Current Version and History](#)

PAD-TM: 3574-3288-02/03.00/C/1/EN

Contents

1	Information on the Current Version and History.....	3
1.1	Version 2.70.....	3
1.2	Version 2.62.....	3
1.3	Version 2.61.....	3
1.4	Version 2.60.....	3
2	Firmware Update.....	5
2.1	Validity Information	5
2.2	Update Information	5
2.3	Updating the Firmware.....	6
3	Customer Support	10

1 Information on the Current Version and History

1.1 Version 2.70

Improvements

Version	Improvements
2.70	Output off after power fail
2.70	Bugfix: Correct state of register ("stat:ques:inst:isum1:cond?") during deactivated output
2.70	Bugfix: Save currents >5A of ARB waveforms correctly
2.70	Bugfix: Output off (channels) after reset
2.70	Bugfix: USB class settings saved after power cycle
2.70	General bugfixes and optimizations

1.2 Version 2.62

Improvements

Version	Improvements
2.62	New fan algorithm for HMP4040 with power board
2.62	PWM frequency changed to 7.2kHz for HMP Facelift
2.62	Overtemp event counter added to avoid false overtemp events

1.3 Version 2.61

Improvements

Version	Improvements
2.61	Bugfix: Collision of interface settings and menu settings in EEPROM

1.4 Version 2.60

New Functionality

Version	Functions
2.60	USB-TMC with HO732 added

Improvements

Version	Improvements
2.60	Bugfix: "." or " " is ignored correctly at the beginning of a command
2.60	Bugfix: Collision of interface settings and menu settings in EEPROM

Version	Improvements
2.60	Bugfix: HO732 Webserver added a SCPI error in the screenshot window
2.60	Bugfix: Interface communication issue (interfaces with handshake delay [e.g. HO732])
2.60	Delay of power interruption of 25ms for EMC testing added

2 Firmware Update

Firmware updates for the R&S HMP Series are available as download from the Rohde & Schwarz web page <https://www.rohde-schwarz.com>.

2.1 Validity Information

The firmware is referring to the following devices:

Device	Order Number
HMP2020	3629.6718.02
HMP2020	3622.2075.02
HMP2020	3593.0451.02
HMP2020	3594.4650.20

Device	Order Number
HMP2030	3629.6718.03
HMP2030	3622.2052.02
HMP2030	3593.0468.02
HMP2030	3594.4650.30

Device	Order Number
HMP4030	3629.6776.03
HMP4030	3622.2046.02
HMP4030	3593.0474.02
HMP4030	3594.4667.30

Device	Order Number
HMP4040	3629.6776.04
HMP4040	3622.2023.02
HMP4040	3593.0480.02
HMP4040	3594.4667.40

2.2 Update Information

The installation software for R&S HMP Series is named RS_HMPUpdate_FWV2.70.exe.

2.3 Updating the Firmware

The HMP series supports an update of the firmware using the following interfaces:

HO720 dual interface (RS232/USB-CDC)

HO73x dual interface (USB/LAN), only using USB-CDC

HO740 GPIB interface

1. Extract the software

Please unzip the firmware update file into a separate folder, since beside the update program there are other components like driver needed for the update. The program will extract all these files in one folder

2. Set the HMP to update mode

In order to activate the firmware update mode of the HMP, please hold the buttons pressed for 5 seconds at the time of switching on the HMP. The respective buttons are listed in Tab.1:

	HMP20x0	HMP40x0
HO720 RS232	REMOTE and CURRENT	REMOTE and ENTER
HO720 USB-CDC	REMOTE and FUSE	REMOTE and MENU
HO73x USB-CDC	REMOTE and CURRENT	REMOTE and ENTER
HO740 GPIB	REMOTE and CURRENT	REMOTE and ENTER

Tab.1: Buttons pressed to enter update mode

The HMP will immediately show in the display, that it has entered the update mode.

3. Run the update program

Please close all open applications in order to make the update process as secure as possible. Then start the update software with double click on the file "HMP UPDATE.exe" in the folder where all files were unzipped.



Fig.1: Window of the HMP update program

4. Setting up the update program

Like shown at the next figure, please choose the type of the HMP which you want to update from the pull-down menu in the top half of the program window. Afterwards choose the interface you want to use, COM port or GPIB (last entry in the menu) at the pull-down menu on the left bottom part of the program window.

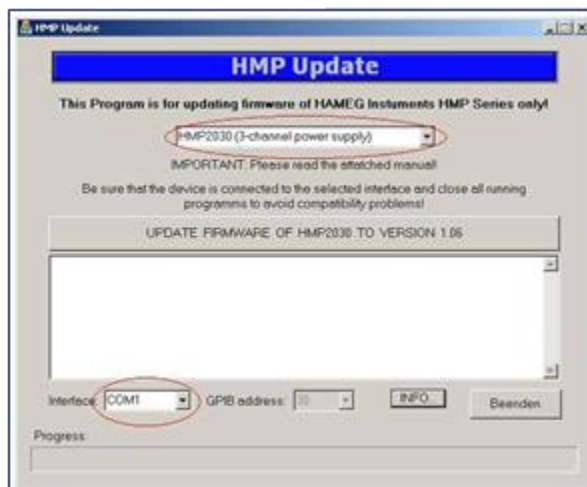


Fig.2: Choosing type of HMP and interface used

5. Run the firmware update

Run the firmware update by clicking on the red marked button in the program window.



Fig.3: Start button for the update

The unit starts the update process immediately. Do not interrupt the power supply and do not switch off the HMP during update process is running. If the update program seems to be frozen, do not switch off the HMP anyway. The update is then running in the background and take about 10 minutes to succeed.



Fig.4: Update currently in process

The program asks for restart of the HMP, once the update is done.

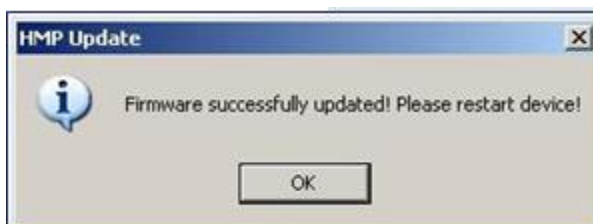


Fig.5: Notification window after successful update

You can verify the successful update if you take a look in the HMP Menu INFORMATION. In case of any problems, you can re-run the firmware update at any time like described starting from point 2 of this document.

3 Customer Support

Technical support – where and when you need it

For quick, expert help with any Rohde & Schwarz equipment, contact one of our Customer Support Centers. A team of highly qualified engineers provides telephone support and will work with you to find a solution to your query on any aspect of the operation, programming or applications of Rohde & Schwarz equipment.

Up-to-date information and upgrades

To keep your instrument up-to-date and to be informed about new application notes related to your instrument, please send an e-mail to the Customer Support Center stating your instrument and your wish. We will take care that you will get the right information.

Europe, Africa, Middle East

Phone +49 89 4129 12345

customersupport@rohde-schwarz.com

North America

Phone 1-888-TEST-RSA (1-888-837-8772)

customer.support@rsa.rohde-schwarz.com

Latin America

Phone +1-410-910-7988

customersupport.la@rohde-schwarz.com

Asia/Pacific

Phone +65 65 13 04 88

customersupport.asia@rohde-schwarz.com

China

Phone +86-800-810-8828 / +86-400-650-5896

customersupport.china@rohde-schwarz.com