

2334614-3 ✓ ACTIVE

[Power Versa-Lock](#) | [Power Versa-Lock 5.0](#)

TE Internal #: 2334614-3

Power Versa-Lock 5.0, Rectangular Caps & Covers, Cover, Wire-to-Wire, 3 Position, 5mm [.197in] Centerline, Sealable, Wire & Cable, Power & Signal

[View on TE.com >](#)



[Connectors](#) > [Rectangular Connectors](#) > [Rectangular Connector Accessories](#) > [Rectangular Caps & Covers](#)



Protection & Strain Relief Accessory Type: **Cover**

Connector System: **Wire-to-Wire**

Number of Positions: **3**

Centerline (Pitch): **5 mm [.197 in]**

Sealable: **Yes**

## Features

### Product Type Features

Product Type	Accessory
Protection & Strain Relief Accessory Type	Cover
Connector System	Wire-to-Wire
Sealable	Yes
Connector & Contact Terminates To	Wire & Cable

### Configuration Features

Number of Positions	3
---------------------	---

### Body Features

Color	Red
Material	Glass-Filled PBT

### Housing Features

Centerline (Pitch)	5 mm [.197 in]
--------------------	----------------

### Usage Conditions

Operating Temperature Range	-30 – 105 °C [-22 – 158 °F]
-----------------------------	-----------------------------

### Operation/Application

For Use With	Cap Housing, Plug housing, Sealed Contact
Circuit Application	Power & Signal



### Industry Standards

UL Flammability Rating	UL 94V-0
------------------------	----------

### Packaging Features

Packaging Method	Bag/Box
------------------	---------

### Product Compliance

[For compliance documentation, visit the product page on TE.com>](#)

EU RoHS Directive 2011/65/EU	Compliant
EU ELV Directive 2000/53/EC	Not Yet Reviewed
China RoHS 2 Directive MIIT Order No 32, 2016	No Restricted Materials Above Threshold
EU REACH Regulation (EC) No. 1907/2006	Current ECHA Candidate List: JAN 2021 (211) Candidate List Declared Against: JAN 2021 (211) Does not contain REACH SVHC
Halogen Content	Not Low Halogen - contains Br or Cl > 900 ppm.
Solder Process Capability	Not reviewed for solder process capability

#### Product Compliance Disclaimer

This information is provided based on reasonable inquiry of our suppliers and represents our current actual knowledge based on the information they provided. This information is subject to change. The part numbers that TE has identified as EU RoHS compliant have a maximum concentration of 0.1% by weight in homogenous materials for lead, hexavalent chromium, mercury, PBB, PBDE, DBP, BBP, DEHP, DIBP, and 0.01% for cadmium, or qualify for an exemption to these limits as defined in the Annexes of Directive 2011/65/EU (RoHS2). Finished electrical and electronic equipment products will be CE marked as required by Directive 2011/65/EU. Components may not be CE marked. Additionally, the part numbers that TE has identified as EU ELV compliant have a maximum concentration of 0.1% by weight in homogenous materials for lead, hexavalent chromium, and mercury, and 0.01% for cadmium, or qualify for an exemption to these limits as defined in the Annexes of Directive 2000/53/EC (ELV). Regarding the REACH Regulation, the information TE provides on SVHC in articles for this part number is based on the latest European Chemicals Agency (ECHA) 'Guidance on requirements for substances in articles' posted at this URL: <https://echa.europa.eu/guidance-documents/guidance-on-reach>

### Compatible Parts



TE Part # 1-2378158-3  
Power Versa-Lock CAP, 1X3 KEY A



TE Part # 1-2378159-3  
Power Versa-Lock PLUG, 1X3 KEY A



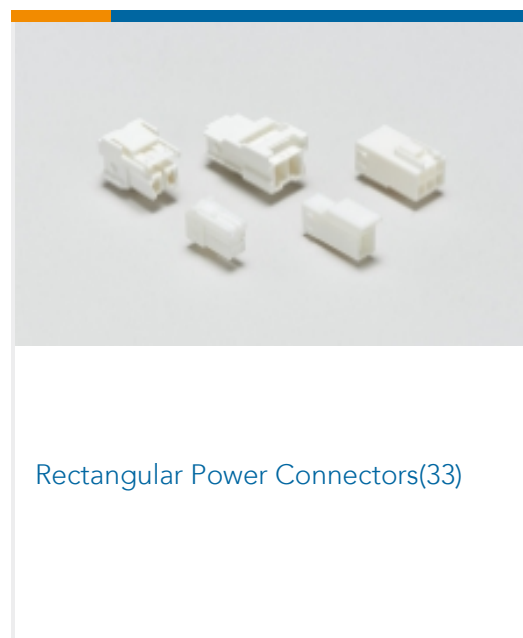
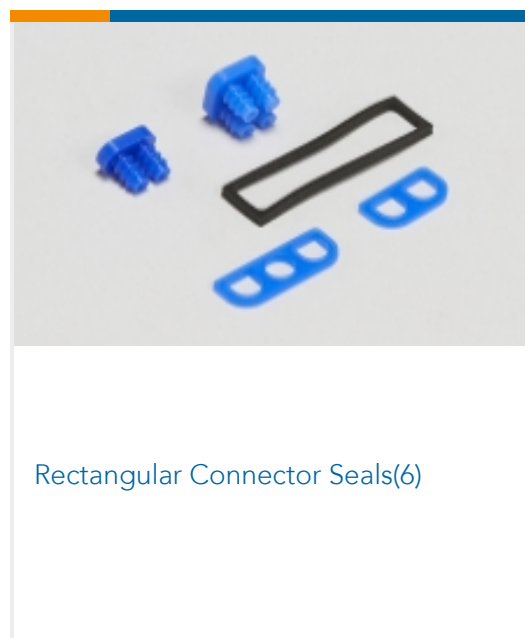
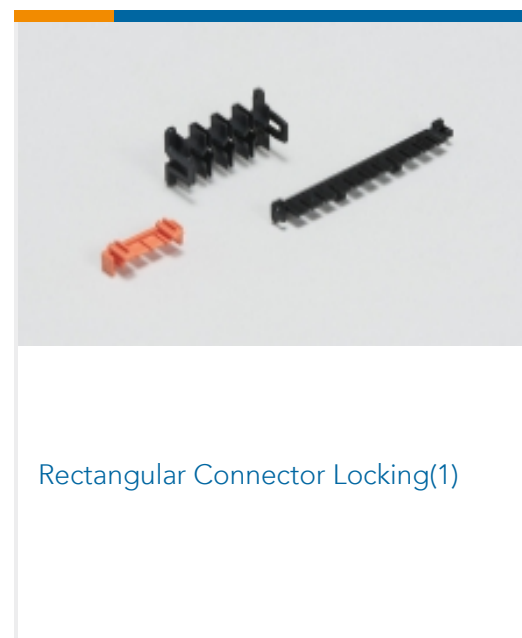
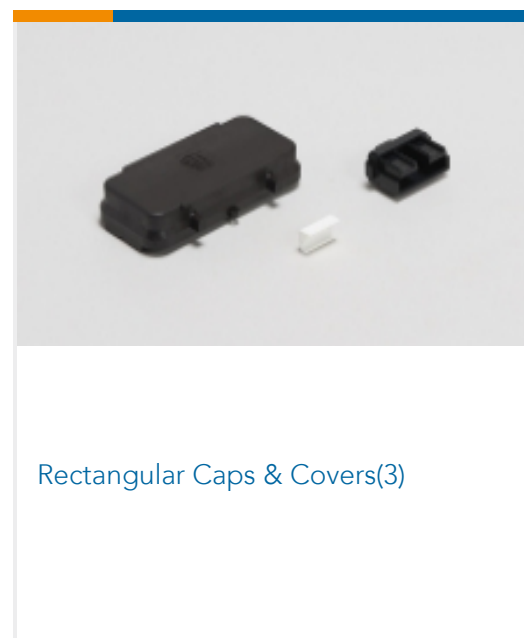
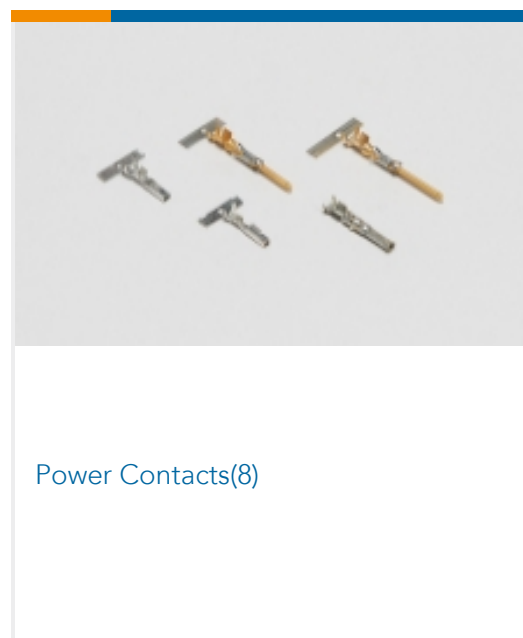
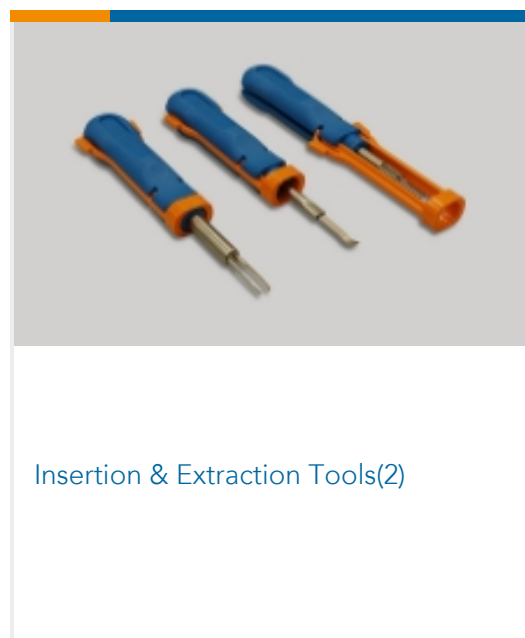
TE Part # 2-2378158-3  
Power Versa-Lock CAP, 1X3 KEY B



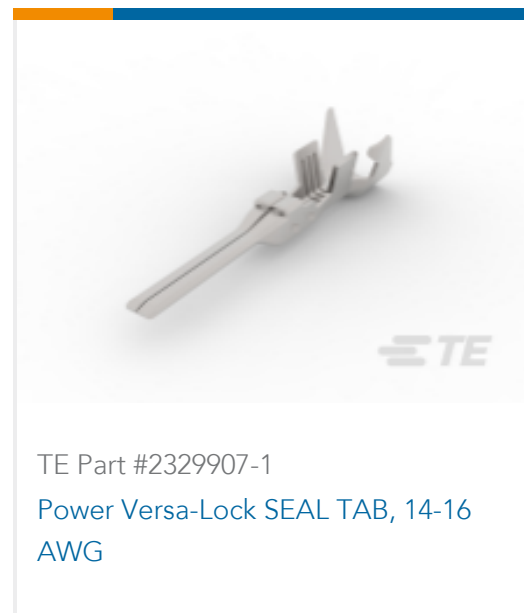
TE Part # 2-2378159-3  
Power Versa-Lock PLUG, 1X3 KEY B

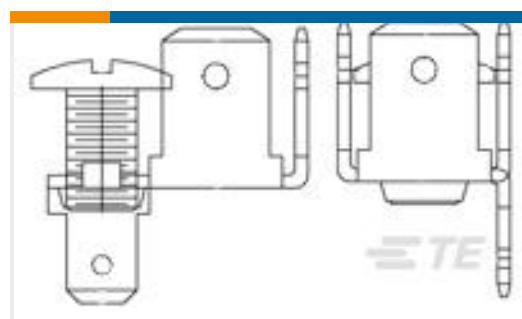


## Also in the Series | Power Versa-Lock 5.0

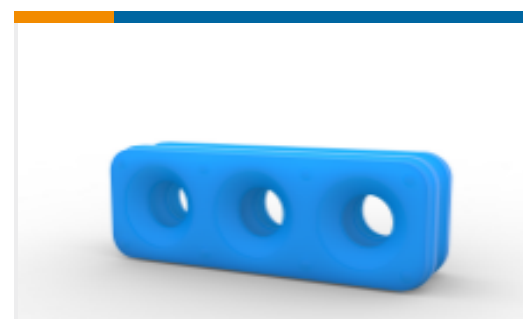


## Customers Also Bought





TE Part #157431-1  
250 FASTON,TAB ASSY,BR



TE Part #2325349-3  
Power Versa-Lock REAR SEAL, 1X3,  
LargeID



TE Part #2334614-2  
Power Versa-Lock BACK COVER 2P



TE Part #2325349-2  
Power Versa-Lock REAR SEAL, 1X2,  
LargeID



TE Part #2325349-1  
Power Versa-Lock REAR SEAL, 1X1,  
LargeID



TE Part #2334614-1  
Power Versa-Lock BACK COVER 1P

## Documents

### CAD Files

#### 3D PDF

3D

#### Customer View Model

[ENG\\_CVM\\_CVM\\_2334614-3\\_A.2d\\_dxf.zip](#)

English

#### Customer View Model

[ENG\\_CVM\\_CVM\\_2334614-3\\_A.3d\\_igs.zip](#)

English

#### Customer View Model

[ENG\\_CVM\\_CVM\\_2334614-3\\_A.3d\\_stp.zip](#)

English

By downloading the CAD file I accept and agree to the [Terms and Conditions](#) of use.

### Product Specifications

#### Application Specification

English

### Instruction Sheets

#### Instruction Sheet (U.S.)

English