

PCB TERMINAL BLOCKS

PCB TERMINAL BLOCKS

5mm Pitch Low Profile 45° Rising Clamp Terminal Blocks

INTER-CONNECTION

FUSES & FUSE-HOLDERS

LEDs & INDICATORS

MINIATURE SWITCHES

LIMIT & SAFETY SWITCHES

CONTROL PRODUCTS

INTERFACE MODULES & SUPPORTS


RELAY BASES

DIN RAIL ENCLOSURES

BATTERIES

SOLAR PANELS

TRANSFORMERS

- 2 & 3 pole interlocking
- 4-12 pole pre-assembled
- 45° mounting
- Moulded in grey UL94-V0 flame retardant PA
- Professional rising clamp terminals
- 0.2-4.0mm² (30-12AWG) solid cable
- 0.2-2.5mm² (30-12AWG) stranded cable
- Captive screw
-  approved

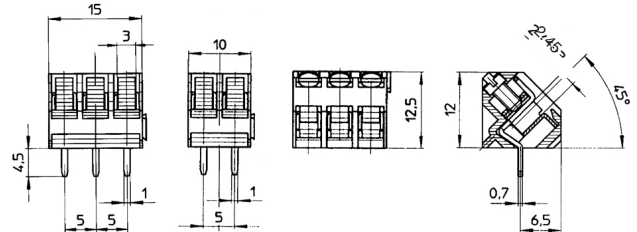
CTB3000




TYPE NO.	POLES	LENGTH
CTB3000/2	2	10mm
CTB3000/3	3	15mm
CTB3000/4	4	20mm
CTB3000/5	5	25mm
CTB3000/6	6	30mm
CTB3000/7	7	35mm
CTB3000/8	8	40mm
CTB3000/9	9	45mm
CTB3000/10	10	50mm
CTB3000/11	11	55mm
CTB3000/12	12	60mm

SPECIFICATION

Rating	24A/160V UL=16A/300V, VDE&IMQ=24A/130V
Dielectric strength	≥1.25kV
Impulse withstand voltage	2.5kV
Working temperature	110°C
Moulding	UL94-V0 flame retardant PA
Pin/terminal	Tinned, nickel plated brass
Rising clamp	Tinned, nickel plated brass
Screw/torque	M3 steel zinc plated, 0.5Nm
Recommended PCB hole size	ø1.3mm



5mm Pitch Standard Profile Screw Terminal Blocks

- 2 & 3 pole interlocking
- 4-12 pole solid block end stackable
- Guided pin alignment
- Moulded in grey UL94-V0 flame retardant PC
- Wire protector terminals
- 0.5-4.0mm² (30-14AWG) solid cable
- 0.5-2.5mm² (30-14AWG) stranded cable
- Anti solder wicking terminals
-  approved

CTB1000



TYPE NO.	POLES	LENGTH
CTB1000/2	2	10mm
CTB1000/3	3	15mm
CTB1000/4	4	20mm
CTB1000/5	5	25mm
CTB1000/6	6	30mm
CTB1000/7	7	35mm
CTB1000/8	8	40mm
CTB1000/9	9	45mm
CTB1000/10	10	50mm
CTB1000/11	11	55mm
CTB1000/12	12	60mm

SPECIFICATION

Rating	24A/400V UL=16A/300V, VDE&IMQ=24A/450V
Dielectric strength	≥2.5kV
Impulse withstand voltage	4kV
Working temperature	85°C
Moulding	UL94-V0 flame retardant PC
Pin/terminal	Tinned, nickel plated brass
Wire protector	Tinned, nickel plated brass
Screw/torque	M3 steel zinc plated, 0.5Nm
Recommended PCB hole size	ø1.1mm

