

RF / Coaxial Cable Assembly
Rear Lock RPSMA Bulkhead Jack-to-MMCX Right Angle Plug, 200mm

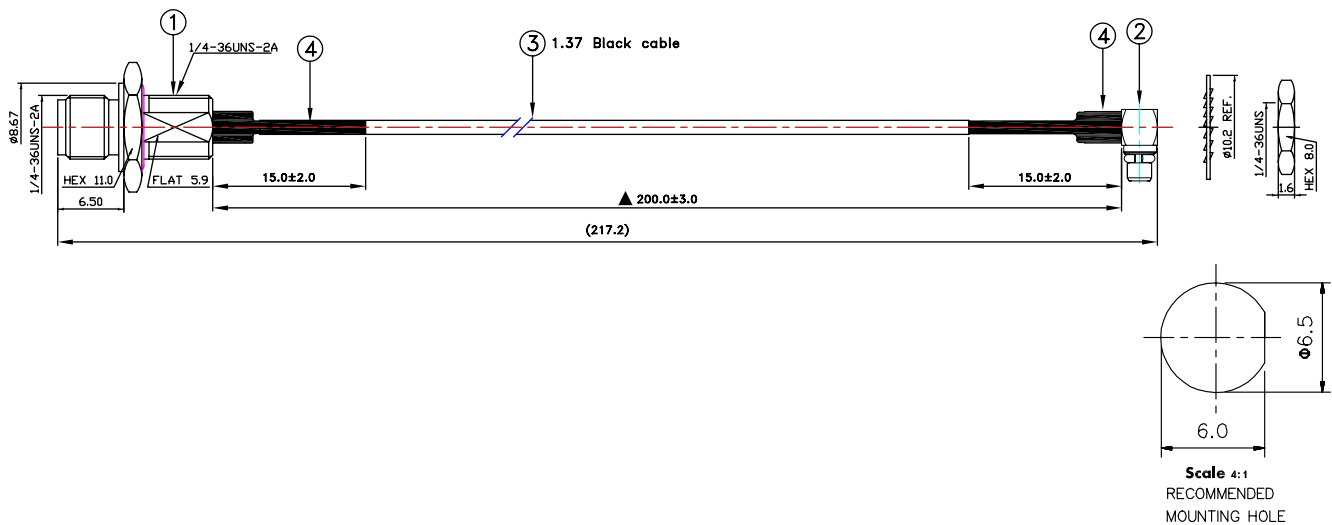
multicomp PRO

**RoHS
Compliant**



Electrical Performance:

Impedance	: 50Ω
Frequency Range	: DC ~ 6.0 Ghz
Working Voltage	: 170Vrms Max.
Dielectric Withstanding Voltage	: 500Vrms Max.
Insulator Resistance	: 1000MΩ Min.

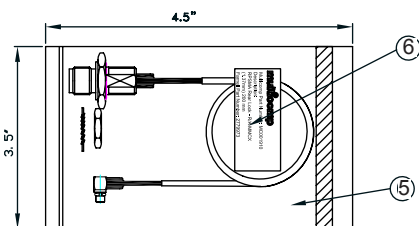


Scale 4:1
RECOMMENDED MOUNTING HOLE
Dimensions : Millimetres

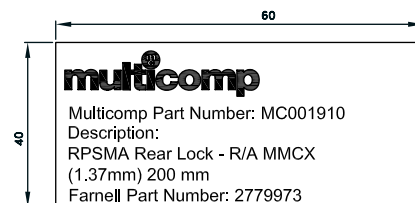
Sl.	Description	Qty
1	RP-SMA Rear Lock B/H Jack Crimp for OD 1.37mm Cable conn.	1
2	MMCX Right Angle Plug for OD 1.37mm Cable	
3	1.37mm Black Cable	
4	Heat Shrink Tube F32 Ø2.5mm L=15mm Colour: Black	

Specification	DC ~ 6.0 GHz
VSWR	1.65 : 1 Max.
Insertion Loss	-1.1 dB Max.

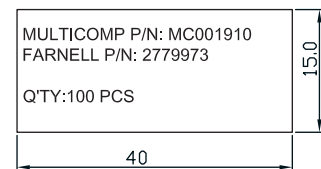
1 PCS/1PE BAG SIZE:4.5"x3.5"



⑥ 3.5"x4.5" PE BAG LABEL SIZE:60x40mm



⑧ 11"x13" PE BAG LABEL SIZE:40x15mm



Newark.com/multicomp-pro
 Farnell.com/multicomp-pro
 Element14.com/multicomp-pro

multicomp PRO