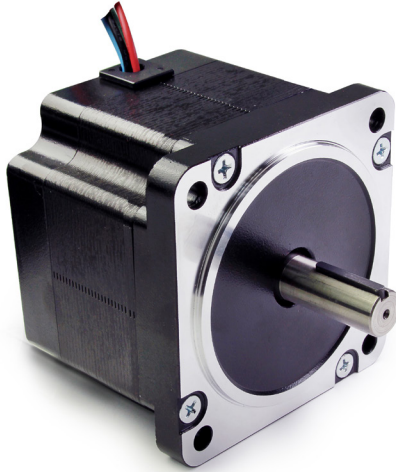
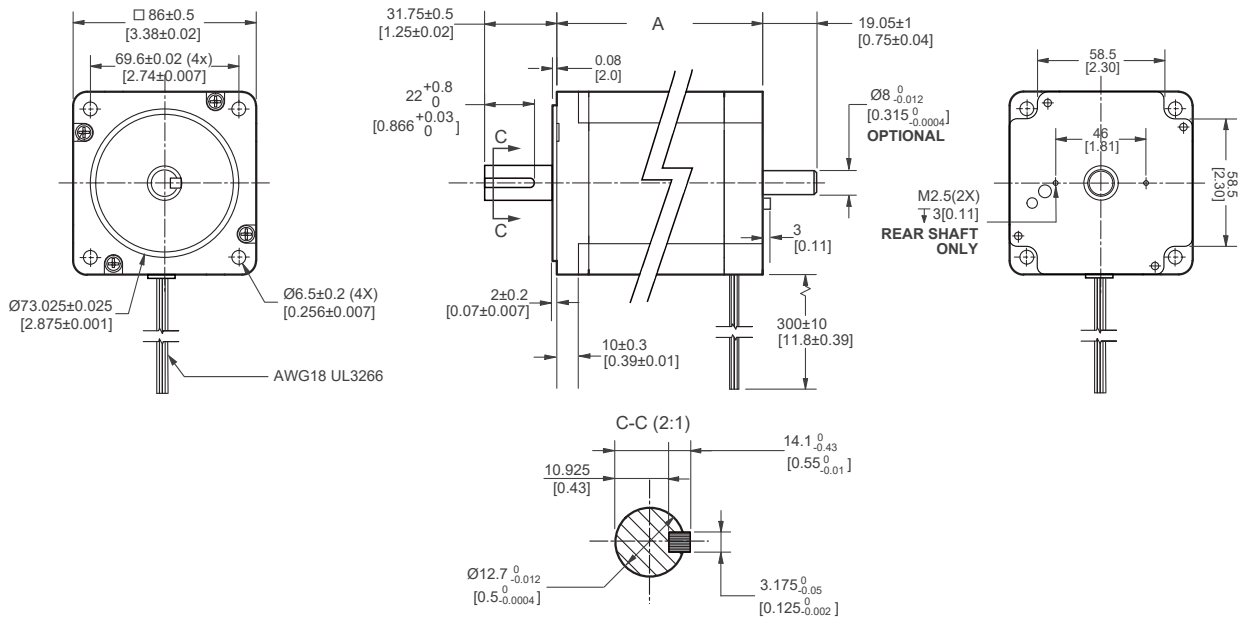


MOTOR SPECIFICATIONS



Part Number	X8718-067-35
Step Angle	1.8°
Frame Size (mm/in)	86.00/3.390
"A" Body Length (mm/in)	67.50/2.660
Current (Amps/Phase)	3.5
Holding Torque (oz-in/Nm)	679.74/4.8
Resistance (Ohms/Phase)	0.95
Rotor Inertia (g-cm ² / oz-in ²)	915/5
Number of Leads	4
Connection	Bipolar
Weight (lbs/kg)	3.53/1.60

DIMENSIONS



PERFORMANCE CURVE

X8718-067-35
 48 VDC, 3.5 AMP, 1/2 stepping

